

World's Fair Subject of Travelogue

Color movies of "The Pacific Northwest and Seattle World's Fair" will be presented in person by Stan Midgley Friday and Saturday at 8 p.m. at the Community House, Birmingham.

Pictured is the complete story of the World's Fair from the space needle to the monorail and with sequences of all principal exhibits. Shown, too, are Seattle, Grand Coulee Dam, Lake Chelan, the Cascade Mountains, the Columbia River Highway, Crater Lake and other famed holiday spots in Washington and Oregon. Tickets are available on the nights of the show at The Community House. The same color films are shown on both Friday and Saturday.

DOWN TO EARTH

New Petunia Variety Put on Market

The Cascade Petunia has many uses for home grounds. It has been bred to behave like our former balcony petunia but is very compact in appearance with many, many flowers.

The flowers are larger than the old style balcony petunia. Cascade petunias will flower to the very end of the season and won't have as big a tangle of long trailers as regular petunias which grow on the ground surface.

These compact, cascading petunias are good for locations in the garden area even where there is only half sun in flower boxes, in hanging baskets which are very much in style, as well as in urns for the terrace and over the rim of a raised flower bed.

This category of petunia can be secured in red, pink and white.

IT WILL INTEREST you to know that it takes five million seeds of petunias to make one pound.

It takes ten years to develop a new annual variety from seed until it is ready for retail distribution. The heartaches and cost of production reminds me a great deal of a pharmaceutical house as they develop a new drug; there are so many trials which do not meet rigid tests.

There is a new technique for developing the choice seeds in this cycle known as F-1 Hybrids.

The favorable lines are crossed and only the seed from the first cross is used. It is called a double-A grade. The plants which are selected to produce this choice seed are grown under glass (to control pollination by insects). One plant may have 200 flowers and these flowers are pollinated by hand with the resulting seed worth \$40,000 per pound. Nearly 20 per cent of our total seed today goes through this process of production.

SNAPDRAGONS are coming to us with F-1 seed and these will

Legal Notices

STATE OF MICHIGAN — The Probate Court for the County of Oakland, in the Matter of the Estate of TONY TATOSIAN, Deceased. At a session of said court, held at the Probate Court in the City of Pontiac, in said County, on the 18th day of March, A. D. 1963.

Present: Hon. Donald E. Adams, Judge of Probate. Order appointing time for hearing. Notice is hereby given and it is hereby ordered that the time and place for hearing on claims against the above estate shall be the 2nd day of June 1963, at nine o'clock in the forenoon at the Probate Court in the County House at the City of Pontiac, Michigan.

All creditors or claimants against the above estate are further notified and ordered to prove their claims at said hearing and prior to said hearing to file written claim therefor, with this Court and with the fiduciary of this estate, under oath, containing sufficient detail reasonably to inform the fiduciary of the nature and amount of the claim.

It is further Ordered that notice be given to all interested parties as shown by the records in this cause by delivering a copy of this order to each of them personally, or by mailing such copy to each of them by registered or certified mail with return receipt demanded addressed to their respective last known addresses as shown by the files and records in this cause.

And it is further Ordered that public notice thereof be given by publication of a copy of this order once each week for three successive weeks previous to said day of hearing in the Birmingham Eccentric, a newspaper printed and circulated in said County.

DONALD E. ADAMS, Judge of Probate. (2,4,5)

If you are a discriminating shopper, you'll find it pays to read the classified pages of The Eccentric...

... today and every week. Read and advertise in the Classified pages. Call MI 4-1100.

By ALICE WESSELS BURLINGAME

Special Writer for The Birmingham Eccentric

Gullen to Speak To PTO Members

George E. Gullen, Jr., vice president-industrial relations of American Motors Corp., will address the Parent Teacher Organization of Bloomfield Hills High School on May 13.

Gullen will speak on the subject, "How Bloomfield Hills Students Can Really Succeed." The address will be at 8 p.m. in the Little Theater at the School. It will be the final meeting of the current school year for the parent-teacher group.

Slide Show

The Bloomfield Hills Camera Club will meet at 8 p.m. April 16 at Silverwolf to see slides of "Cranbrook in Color" by Harvey Croze. The meeting is open to the public.

Activities Begin On Troy Festival

Troyouts are still being held for the Troy Arts Festival Musicals. More information may be obtained by contacting festival secretary Mrs. Daniel Simpson, Mrs. C. H. Ek or Mrs. Charles Reeder.

The next general meeting of the Troy Arts Festival Association will be held at 8 p.m. Friday in Room 119, Troy High School, Birmingham architect Mimoru Yamasaki is this year's chairman of the event.

Glee Club Tours

Edward A. Christie of 3572 West Maple, Birmingham, is a member of the bass section of the 80-voice John Carroll University glee club which toured the Lake Michigan area last weekend giving concerts in South Bend, Ind.; Chicago, Ill., and Milwaukee, Wis.

The "CUSTOM" Service LAUNDRY

Complete LAUNDRY SERVICE For Families and Bachelors

SHIRTS — FLAT WORK COTTON RUGS


Formerly Birmingham Laundromat

1000 SO. ADAMS

We will iron practically anything we wash!

MI 4-8225

Simplicity



'725' RIDING MOWER WITH 42" FULL-FLEX MOWER!

- 42-inch FULL-FLEX Mower mounts on front axle to follow angle of front wheels over contours, never scalps!
- Rugged 7 1/4 hp. 4-cycle Briggs & Stratton engine has EASY-SPIN starting.
- Positive NO-SLIP traction even on slippery surfaces with Traction Differential.
- All controls conveniently located for easy handling and easy service access.
- Engine heat and exhaust blown away from driver! Top speed a smooth 6 mph.

Financing Available!

"Headquarters For Small and Estate-Type Power Lawn Mowing Equipment"

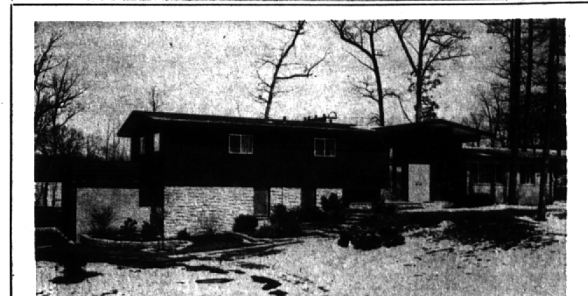
WE SERVICE WHAT WE SELL — 1 YEAR GUARANTEE!

Open Monday thru Saturday, 8:30 to 6 P.M.

W. F. MILLER Co.

Phone Midwest 4-5115, 4-6053

1593 S. Woodward, 2 Blocks North of 14 Mile Rd., Birmingham



TOP EXECUTIVES

Island Lake Contemporary — "The other side of the picture" is even more beautiful overlooking the lake. Redwood, stone and thermopane are artfully combined to create this outstanding home. Living room, dining room, family room, 4 bedrooms, 3 1/2 baths, Carpeting and draperies throughout. Ribbed sandy beach makes this the off shore swimming on the lake. Paved street—Bloomfield schools.

CHARLES J.

VAN HORN

MI 6-2400

JO 4-5644



A NEW kind of petunia—the cascade petunia—will be put on the market this year. Although similar to the "balcony" petunia, the new breed has larger flowers and few "trailers" which grow on the ground surface. It comes in red, pink and white.

take difficult locations for growing and come out in flower with tall, superb panicles of flowers.

In Beltsville, Md., we see the center of the wonderland of plants for the United States Department of Agriculture.

There they are developing chemicals to shorten the space between the nodes of plants so that they are compact. This is important for commercial men who can get more money for a compact, full flowering why ornamental horticultural is

attracting more and more scientifically trained students.

THIS IS A good time for you to begin your canna for the garden. Start the tubers in a mixture of sand and peat. Place the eyes about an inch below the surface of the soil. Keep them fairly dry until growth begins.

After they have leaves four to six inches long, place them outdoors in their pots to benefit by the sunshine when the temperature is moderate.

Remember they are tender and should not remain outdoors until danger of frost is over—about May 22 for us.

EXCITING

to walk through—thrilling

to own!

An *Overbrook* * site brings

you nature's finest site!

MAX BROOCK INC.

MI 4-6700

*West Long Lake and Lahser Roads

THE DELIGHTFUL DIFFERENCE

There are ranch homes for sale all over the place, but this white brick beauty has so many plusses it's hard to know where to begin!

In the "so wanted" Country Club area — yet so handy to town and shopping.

... 4 generous Bedrooms—2 1/2 Baths

... Decorator sized living room with fireplace

... Separate dining room

... A kitchen any woman would be happy to work in

... Tremendous basement with recreational facilities and fireplace.

A transfer abroad makes sale mandatory of this unusual property for the larger family.

\$38,900

5970 Orchard Bend

BENJAMIN & BISHOP, INC. REALTORS

259 S. Woodward, Birmingham, Michigan

MI 4-3232 — JO 4-5728

PRESTIGE LOCATION



Briarbank in the City of Bloomfield Hills

Acre-plus site within WALKING DISTANCE of Vaughan, Cranbrook, Kingswood Schools.

Elegance with an off-hand manner—perfect for a large family and for entertaining.

5 Bedrooms, 3 1/2 Baths. Living room with huge marble fireplace, lush carpeting, wallpaper and draperies. Separate Dining room opens up for a large party.

Gorgeous Family room with oak paneling, beamed ceiling, planked floor, Hi-Fi, Radio and TV Built-ins. Also, a paneled Library with built-in safe.

Huge Kitchen plus Breakfast nook, includes disposal, dishwasher, dishwasher, double stainless steel sink, counter-top stove, double Thermador ovens. MANY FEATURES WHICH MUST BE SEEN!!!!

OR

Wherever you want to live—

SEE US—

We are now affiliated with the largest inter-continental referral system in the entire United States. Reputable—Reliable—Resourceful American Institute of Marketing Systems, Inc.



SNYDER KINNEY & BENNETT INC. Realtors

239 S. Woodward, Birmingham MI 4-7000
32740 Franklin, Franklin MA 6-9600