



## Ground School

Aviation without instruments? For those persons interested in flying—and learning more about instruments—the Clawson Public Schools are offering two adult education courses on aviation, both taught by David Burkhardt (left) of 2650 Yorkshire, Birmingham, seen pointing out how to use just one instrument to student Robert Noss of Royal Oak. The courses are "Aviation Fundamentals I" and "Aviation Instrument Rating."

## Sparkle

(Continued from 1-D)  
deals with the satisfaction of malice and the rare enjoyment of revenge.

THE INSTRUMENT of that revenge presents itself in the intelligent, nervous, nail-biting Private Robert Ogleshorpe, assigned to Lt. Poole's rapidly diminishing supply room. Ogleshorpe, a pragmatic idealist, encourages Poole to pass his college exam on his own merits. Reminding Poole of his grammar school oral recitations, "1492 Columbus sailed the ocean blue," and "Listen my children and you shall hear of the wonderful ride of Paul Revere," a renovation job is attempted.

Poole, in green eyeshade, becomes a gentleman and scholar, at least a sufficient one to attempt the examination. The school expands to accommodate five oppressed master sergeants who want to keep their stripes, without being blackmailed by Captain Malcolm.

THE TONE of the play is set by the vigor and quality of Martin Strandberg's Lt. Poole. When he reminisces about the past there is a crispness with the poignancy. When he defends the frightened Ogleshorpe against the bullying Captain Malcolm, Strandberg succeeds in making Poole heroic and yet nonchalant, manly but natural. The role is a demanding one and, at the end of the play, when Strandberg tired and flubbed lines, the performance was so strong that the truth of the character was there. His memory served him in the fuller picture, if not in each specific word.

THE DIRECTION, by John Coplin, made the actors sympathetic to each other. All of the "students" were good performers. Dave Raymond, as a friend and impassive observer, was always crisp and attentive to his role. Dick Guilford as Angelo Bucci, the Italian family man, created a lively personality. Jim Page, the slow talkin' Southern Lucious Snow, was one of the best performers, not rushing the role and yet not milking it either. Don Hutton was Master Sergeant Jerry Wheeler the Dealer, who convinced us of his interest in alcohol.

A real ham was John Allman, as

Master Sergeant J. J. La Rue, who ran the stockades and was known as the Beast of Belsen. Allman created an aggressive, almost sub-human creature who falls in love with a fellow student, Master Sergeant Florence Denzil, and allows tenderness to enter his voice as creepily as a seldom-used door.

JANET MARTIN, as the lady love, is business-like and womanly. She astonishes LaRue by remembering history through movies (the Mexican War is John Wayne against the Mexicans in 1896).

Charlie Campbell is a young, earnest, sometimes overly eager Ogleshorpe and touches us with his portrayal. Jim Kickler, as Captain Malcolm, starts out in a monotone of emotion, becomes stronger as the play goes on, and has a final grand "mad scene."

Fran Loud is almost too convincing as a slow-witted Private First Class Rooney, and Kent Bone creates a slightly officious young psychiatrist who is keeping Pvt. Ogleshorpe under observation. Ginny Avison as Mrs. Bucci is weak and uncertain in her part.

THE PLAY is not a rehash, in essence, of army songs. It is the measurement of each man. It is not mindlessly written. The authors use a clever business with quiz psychology, for instance, where Ogleshorpe tries to help his students pass the prepared test. ("If it's famous, it's probably False.") The authors use a teaching technique where the individual is not dismissed or made over but forced to remember, to use all of himself, to make connections between what he knows and what he's asked to know. Wheeler, the alcoholic, figures his volumes in arithmetic by steins of beer.

When the comedy ends the Goldmans have written a human comedy. The life here does not end sugary or neatly tied. Only a little is accomplished in the world of the play, but this with humanity.

### Exhibit in Detroit

Six Birmingham women are exhibiting presently in the Detroit Society of Women Painters and Sculptors 50th Annual Exhibition at the Scarab Club in Detroit. Helen Allison, Mae Averill, Kathleen Birch, Winifred Heizer, Lilian Hopkin and Eve Szilagy have paintings in the show, which will run through Friday.

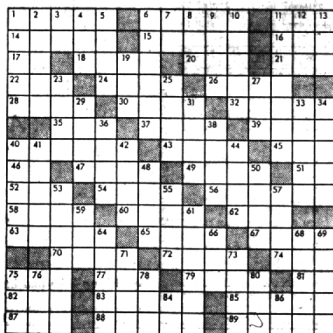
### ACROSS

1 All current  
6 Greek philosopher  
11 Mineral spring  
14 Machine part  
15 Not as high  
16 Slumy  
17 Piffing  
18 Chest adobe  
20 Make a mistake  
21 Furniture truck  
22 Pass time  
24 Period of time  
26 Pleasant  
28 Underground animal  
30 Bewildered  
32 Classifies  
33 Bait  
37 Every  
40 Gazed fixedly  
43 Profound  
45 Cover  
46 Toward  
47 Tidy  
48 Smoke and fog  
51 Parent  
52 Likely

### DOWN

1 Sleep  
2 Musical composition  
3 By  
4 Because  
5 Serving dish  
6 Satisfy  
7 Behold  
8 Reverence  
9 River duck  
10 Pragmatic rootstock  
11 More than two  
12 Blue grass  
13 Girl's name  
19 Meadow  
23 Wide mouthed  
25 Perme  
27 Small bed  
29 Merit  
31 High cards  
33 Animal stomach  
34 Soft drink  
36 Unwanted plant  
38 Asiatic herb  
40 Asterisks  
41 Subject  
42 Raised platform  
44 Sult  
45 Woody plant  
46 Steady hold  
53 Trade  
55 Diplomacy  
57 Break suddenly  
59 Blind  
61 Clave drink  
64 Dull finish  
66 Mineral rock  
68 Have faith  
69 Entertainers  
71 Trip  
72 Engrave  
73 Ovarian  
76 Vase  
78 Work unit  
80 Before  
84 Negative word  
86 Each (abbr.)

Answers to  
Puzzle Will  
Be Found  
On Page 8-D



PUZZLE NO. 750

## B'ham Woman Has Collection In Exhibit

The current Collector's Corner exhibit at the Detroit Historical Museum features covered hen and rooster dishes from the collection of Mrs. Richard H. Marr, 296 Fairfax Road, Birmingham. Made pri-

marily of milk-white glass, the exhibit also includes some rare Staffordshire examples. The glass ones are products of a number of different firms which produced covered animal dishes in the second half of the 19th century. The collecting by Mrs. Marr of covered dishes began with one which was brought to Detroit many years ago from the Marr family home in Germany. It was used from time to time as a container for butter, jam and the like. Mrs. Marr is a member of the Detroit Historical Society and a

April 4, 1963

THE BIRMINGHAM (MICH.) ECCENTRIC 3-D

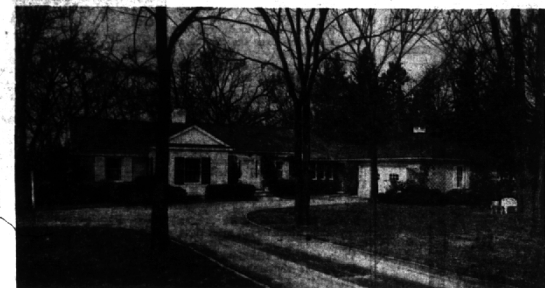
frequent donor to the museum. One gift in particular, a hitching post, has become a familiar landmark to museum visitors to the "Streets of Detroit" exhibit on the ground floor. Most appropriately it was once used on the Woodward Avenue frontage where the Historical Museum building now stands. The exhibit will continue through Easter Sunday.

Try an Eccentric Want Ad!

## Local Youth Plays Part in 1-Act Play

Lanny Howe, son of Dr. and Mrs. Reuel Howe, 1289 N. Cranbrook Road, Birmingham, will play the part of the firechief in "The Bald Soprano" at Olivet College. The performance is one of two one-act plays to be given by the drama department of the college as a part of Olivet's annual festival of fine arts Saturday.

## Beauty 365 days of the year . . . . PIERCE homes provide the background you need



Birds, small animals, wild flowers, mature evergreens, oaks, small stream through ravine, sloping front lawn, secluded area.

2 bedrooms  
library (possible 3rd bedroom)  
Separate dining room  
Family Room  
Breakfast space, built-in in kitchen  
carpeting  
Sewer installed

Member NATIONWIDE find-a-home SERVICE, INC.



**FRED PIERCE INC.**  
460 NORTH WOODWARD, BIRMINGHAM, MICH.  
Midwest 7-1414

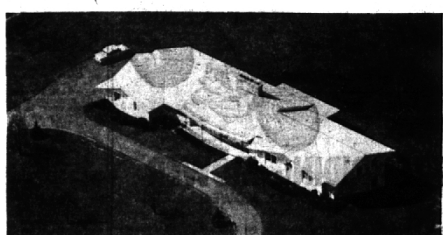
## IN TOWN LOCATION



This most attractive home is in a very convenient location—walking distance to schools and shops.

4 Bedrooms, large screened porch, flagstone patio, extra large living room, all in first class condition, with new aluminum storms and screens. There is also carpeting and an entrance way paneled in pecky cypress. Most delightful setting for antiques, \$30,900. \$6,200 down, \$140 monthly.

## INCOMPARABLE RUDGATE!



Yes, incomparable Rudgate provides the setting for this classic home. As luxuriously appointed as any home in the area, it has five bedrooms, 4½ baths, powder room, exceptional family and games rooms, oversize 3 car garage, lovely travertine marble foyer. Better than new, \$115,000.

MAX BROOCK INC.  
"Birmingham's Nationally Known Realtors"

300 S. WOODWARD

MI 4-6700

## NEAR THE HIGH SCHOOL!



Designed by a leading architect famous for "liveable contemporary and located on a quiet court in Woodlea Colony, this home is walking distance to Birmingham High and Midvale Elementary schools. The accommodations, too, are excellent, 4 Bedrooms, 3 full baths, kitchen with all built-in equipment, studio ceiling living room. New carpeting included at \$31,500—\$6,500 down.

## SPANKING NEW—IN THE TREES



Have you seen Wendover lately? The home pictured is typical of five exhibit homes open every afternoon for your inspection. This superb Colonial was quality built by Metzger Bros. It has five bedrooms, gorgeous paneled family room, sparkling kitchen, large dining area. Priced from \$32,900. Walking distance to Birmingham school, in a most convenient location. Take Adams Rd. to Wendover Rd., turn East, follow signs.

Call... 646-8827

**BRUCE WIGLE**  
PLUMBING & HEATING CO.



for prompt local  
**24**  
HOUR  
SERVICE

WATER HEATERS ■ GARAGE GRINDERS  
GAS HEAT ■ BLOCKED SEWERS CLEARED  
OIL BURNERS SERVICED  
Also FACTORY and STORE PLUMBING, HEATING  
PLUMBING REPLACEMENT PARTS

Serving and Satisfying Since 1913