

Soft Fabrics Shape New Coats, Suits

There is a wonderful excuse to buy a new Spring coat and suit this year. No matter how smart your old coat may be—it does not make news unless it's in one of the exciting textured fabrics and clear pastels that are the hallmarks of new season coats.

The new '63 styles propose everything pretty and poetic, everything feminine and delightful to wear.

THANKS TO the diversity of styles, reports the New York Coat and Suit Association, spring coats are not confined to any one silhouette. Some are eased, overflowing, fitted or Plumb-Line. Others are straight from shoulder to hem, with marvelous underpinning in front. Some have cascading back fullness, like a choir boy's surplice. Some swagger into belted trench types. All have a timeless chic.

FABRICS for spring tell a texture story . . . twists, bubbles, loops, boucles, souffles, nubby, puffed . . . and all are foamy light.

Color wise, coats are captivating. Pastels reign supreme with powder blue and pink taking the spotlight. There's a big salute too for red, white and blue.

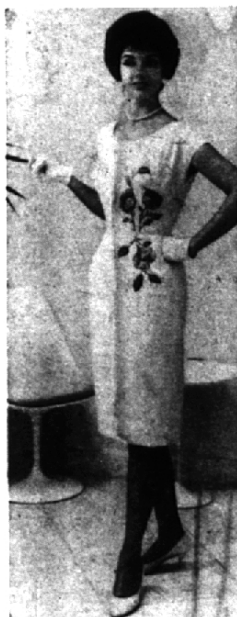
FOR THE WOMAN who loves suits (and what woman doesn't) this is an important suit season.

Suits are different looking, more flattering and definitely more wearable for more women than they have been for quite a while.

According to the New York Coat and Suit Association there's news in jackets — they have a demi-fitted look and move closer to the body. They vary from the waist-skimmer to the baby-doll bolero, to the Chanel inspired cardigan to the thirty-six inch length walking suit.

Skirts are slim or softly gathered, easy to stride in.

Costume suits are favorites, especially when the accompanying blouse is a silk print with matching jacket lining.



Summer Style

Just right for warmer weather is this smart cotton peau sheath with appliqued flower trim. Available in shell pink or open blue, it will grace some lucky women this summer.

For further information regarding the clothes pictured in this section, call MI 4-1100.

THE COLORS for the season invite dare-to-be different combinations—such as turquoise and brown; fawn and grey; black and white; or, green and navy. There are whites and off whites while exciting new clear pastels such as yellows, celery tones, corals, pinks, powder blue and citron glow smartly on the scene.

Tissue-weight fabrics, in rough to smooth textures, take the limelight. Leading the fashion parade are airy wools; crisp, dry worsteds; wave-patterned silks; cotton rivulets and grainy, new synthetics. Particularly new looking is a light weight Anglo wool in an interesting diagonal weave. For a dressy look the silks and worsteds are leading the spring suit hit parade.

SPRING '63 is especially exciting in its mood of fashion flat-tery. Natural curves are highlighted, colors are appealing and flattering while fabrics whisper wearability.

'Rise 'n Stride' Test



NO BINDING
when you sit . . .



NO TUGGING
when you rise . . .



NO RIDING
when you stride.

once upon a time
little princesses dreamed of wondrous dresses,
sweet as sugarplums and gay as fairyland.
Jacobson's waved its magic wand: Behold!

**Beautiful Princess Dresses in
misty aqua and white eyelet lace
in wash 'n wear cotton.**

From right: full skirt,
puff sleeve, detachable
pinafore, 4-6x sizes, 10.98.
Button back top, lace tiered
underskirt, 4-6x sizes, 8.98
7-12 sizes, 10.98.
Dacron bodice, eyelet tiered
skirt, 4-6x sizes, 12.98
7-12 sizes, 14.98.
A-line button-back,
3-6x sizes, 7.98
7-10 sizes, 8.98.

Open
Thursday
Evening
Until 9 P.M.

Jacobson's
childrens shops

275 N. Woodward
Birmingham

