

## Calendar of Cultural Events

Mar. 21

**BLOOMFIELD THEATER**—"Tara Bulba" starring Tony Curtis and Christine Kaufman, and "Hero's Island" starring James Mason and Kate Manx.

**BIRMINGHAM THEATER**—Double feature: "Stowaway in the Sky" and "In Search of the Castaways," starring Hayley Mills, Maurice Chevalier and George Sanders.

**BALOGH GALLERY**—Group exhibition, which features the work of French traditional painter Milo, and work by members of the art faculties of Oakland and Wayne State universities held over from last month's showing will run through March at the Balogh Gallery, 136 Brownell, Birmingham. Hours are 10 a.m. to 6 p.m. Monday through Saturday and 2 to 5 p.m. Sundays.

**JACOBSON'S**—Exhibition of paintings by contemporary French artists Gabriel Godard and Charles Levier through Mar. 30 in Jacobson's Home Decorative Shop. Hours are 9:30 a.m. to 5:30 p.m. daily and until 9 p.m. on Thursdays.

**CRANBROOK GALLERIES**—Exhibition "Wit and Whimsy in 20th Century Art" will run through Apr. 7. Hours are 2 to 5 p.m. daily except Mondays. Admission charge.

**BIRMINGHAM ART CENTER**—Exhibit, "The Young at Art," at the Birmingham Art Center, 1316 S. Cranbrook Road. The show will run through Mar. 31. Hours are 2 to 5 p.m. daily except Monday.

**LITTLE GALLERY**—Exhibition of abstract oil paintings by Jafar Shoja and Ruth Moller Smith through Apr. 6 at the Little Gallery, 915 E. Maple, Birmingham. Hours are 9 a.m. to 6 p.m. daily except Sundays and Mondays.

**OAKLAND UNIVERSITY GALLERIES**—An exhibition of paintings, graphics and sculpture by community collectors. Will run through April 3. Hours are noon to 5 p.m. Monday through Friday.

**BRIDGE**—Birmingham Duplicate at the YMCA, 400 E. Lincoln, Birmingham, at 7:45 p.m. Open to the public.

Mar. 22

**TRAVELOG**—Julien Bryan presents film, "30,000 Miles All Over Africa," at the Community House at 8 p.m. Open to the public. Admission charge. Tickets available at the door.

**FILM**—The Southfield Film Society presents "The Bicycle Thief," an Italian movie, at 8 p.m. in the Northwestern Unitarian-Universalist Church, 3395 Northwestern Highway. Panel discussion will follow. Open to the public. Admission charge.

Mar. 23

**TRAVELOG**—Julien Bryan presents film, "30,000 Miles All Over Africa," at the Community House at 8 p.m. Open to the public. Admission charge. Tickets available at the door.

Mar. 24

**CONCERT**—A string ensemble from the Detroit Symphony Orchestra will accompany the St. James Episcopal Church choir in "A Service of Music for Lent" at the church, beginning at 8 p.m.

Mar. 25

**CONCERT**—Baritone William Warfield will perform in the auditorium of Pontiac Northern High School, sponsored by the Oakland University Community Arts Council, at 8:15 p.m. Open to the public.

**BRIDGE**—Duplicate Bridge at the Birmingham Community House, beginning at 7:45 p.m. Open to the public.

Mar. 26

**BRIDGE**—Tuesday Birmingham Duplicate at the home of Hilda Murphy, 2424 Manchester, Birmingham, at 1 p.m. Open to the public.

Mar. 27

**BRIDGE**—Birmingham-Bloomfield Area Bridge Club at the YMCA, 400 E. Lincoln, Birmingham, beginning at 7:45 p.m. Open to the public.

Mar. 28

**BRIDGE**—Birmingham Duplicate at the YMCA, 400 E. Lincoln, Birmingham, at 7:45 p.m. Open to the public.

**CONCERT**—Fred Waring and "The Pennsylvanians" with their "Wonderful World of Music" at Groves High School, W. 13 Mile and Evergreen, at 8:30 p.m. Sponsored by the Birmingham Lions Club.

Mar. 29

**BIRMINGHAM VILLAGE PLAYERS**—Opening night of "Design for Murder" at the playhouse on Chestnut Street in Birmingham. Curtain time is 9 p.m.

**ST. DUNSTON'S GUILD**—Opening night of "Blood, Sweat and Stanley Poole" at the playhouse on Lone Pine Road, Bloomfield Hills. Curtain time is 9 p.m.

**FRANKLIN PLAYERS**—Opening night of "Man in the Dog Suit" at the Farmington Players' Barn, 12 Mile west of Orchard Lake road. Curtain time is 8:30 p.m.

Mar. 30

**STAMP COLLECTOR'S CONVENTION**—Local and state philatelists will meet at the Birmingham Community House. Open to the public from 1 to 10 p.m.

**BIRMINGHAM VILLAGE PLAYERS**—The Players will present "Design for Murder" at the Chestnut Street Playhouse in Birmingham. Curtain time is 9 p.m.

**ST. DUNSTON'S**—The Guild will present "Blood, Sweat and Stanley Poole" at the Playhouse on Lone Pine Road in Bloomfield Hills. Curtain time is 9 p.m.

**FRANKLIN PLAYERS**—The Franklin Players will present "The Man in the Dog Suit" at the Farmington Players' Barn, 12 Mile west of Orchard Lake road. Curtain time is 8:30 p.m.

Mar. 31

**KIRK-IN-THE-HILLS**—A concert of sacred music for solo voice and organ, with Alice Stentz, contralto, and Philip Steinhaus, organist, at 4 p.m.

**STAMP COLLECTOR'S CONVENTION**—Local and state philatelists will meet at the Birmingham Community House. Open to the public from 1 to 6 p.m.

April 1

**SECOND ANNUAL WORLD REPORT**—Lecture by Dr. Melvin Terno entitled "Extremists: Enemies of Democracy" at the Oakland Center on the Oakland University campus at 10 a.m. Open to the public.

**ANTIQUES**—Fifth lecture in a series on "Early American Antiques" at the Village Woman's Club at 1:30 p.m. Speaker will be Gerald Gibson.

**BRIDGE**—Duplicate Bridge at the Birmingham Community House at 7:45 p.m. Open to the public.

April 2

**COMMUNITY CONCERT ASSOCIATION OF SOUTHERN OAKLAND COUNTY**—William Warfield, baritone, will give a concert in the Oak Park High School auditorium at 8 p.m. Admission by membership card only.

**BRIDGE**—Tuesday Birmingham Duplicate at the home of Hilda Murphy, 2424 Manchester, Birmingham, beginning at 1 p.m. Open to the public.

April 3

**CONCERT**—Oakland University Collegium Musicum concert, part of the O. U. concert-lecture series, at the Oakland Center on campus at 1 p.m.

**BRIDGE**—The Birmingham-Bloomfield Area Bridge Club at the YMCA, 400 E. Lincoln, Birmingham, beginning at 7:45 p.m. Open to the public.

April 4

**BRIDGE**—Birmingham Duplicate at the YMCA, 400 E. Lincoln, Birmingham, beginning at 7:45 p.m. Open to the public.

Page The Birmingham Eclectic  
140 Thursday, March 31, 1965



EDWARD LACROSSE

### Authority Talks About Handicapped

Edward LaCrosse, nationally known authority on education for the mentally handicapped, will be guest speaker at the spring conference Wednesday, of the Oakland County Council for Retarded Children.

LaCrosse, who is educational consultant to the National Association for Retarded Children, New York, will discuss new concepts in education for the mentally handicapped. The meeting will be held in the Seaborn High School, Birmingham.

**THE PURPOSE** of the conference is to stimulate public concern for wider educational opportunities for retarded youngsters, according to Stanford Wallace of Huntington Woods, president of the Oakland County Council. Wallace said: "We have invited adult educators in Oakland County to hear Mr. LaCrosse. Expanded educational programs, geared to the ability of the retarded, can make useful citizens of many and keep scores of others out of our overcrowded state institutions."

The council represents parent groups which now operate four day centers for 160 children in the county and of parents of children in state institutions.

### Shouy Article

Appearing the coming special section of Show magazine on Detroit will be an article by Walter Laidlaw, 704 Tottenham, Birmingham, executive vice president of the United Foundation, on the UP's activities, particularly on the cultural scene. The magazine is also co-sponsoring a fashion show at the Fisher Theatre April 4 for the benefit of the UP's Women's Organization.

## SHUTTERS! TOP QUALITY-LOW PRICES!

### FOR INTERIOR WINDOWS

Width	6	7	8	9	10	11	12
H 20	1.10	1.35	1.50	1.68	1.88	1.98	2.19
E 24	1.50	1.75	1.93	2.09	2.25	2.38	2.48
I 28	1.60	1.94	2.09	2.24	2.40	2.49	2.84
G 32	1.92	2.10	2.44	2.77	2.92	2.98	3.29
H 36	2.26	2.56	2.85	3.16	3.40	3.55	3.76
T 40	3.50	3.60	3.71	3.78	4.04	4.19	4.32

### FOR INTERIOR DOORS

BIFOLD UNITS	DOORS
1½ Complete With All Hardware	12 x 80 x 1½—\$4.95
24 x 80—\$15.95	15 x 80 x 1½—\$5.15
30 x 80—\$16.95	18 x 80 x 1½—\$5.45
36 x 80—\$17.95	Also 1½ Doors at Slightly Higher Prices
48 x 80—\$31.95	

### FOR EXTERIOR WINDOWS

STOCK 1½ BLINDS — PRICED PER PAIR

14x35½—\$5.95	14x51½—\$7.35	18x35½—\$6.30	18x51½—\$7.90
14x39½—\$6.30	14x55½—\$7.60	18x39½—\$6.65	18x55½—\$8.45
14x43½—\$6.55	14x59½—\$8.10	18x43½—\$7.05	18x59½—\$8.70
14x47½—\$6.85	14x63½—\$8.45	18x47½—\$7.55	18x63½—\$9.20
14x67½—\$8.70		18x67½—\$9.65	

Come In and Let Us Help You Solve Your Window Problems  
We Have the Areas Most Complete Stocks  
WE WILL HELP YOU DO IT YOURSELF, OR RECOMMEND A QUALIFIED CONTRACTOR

**BIRMINGHAM LUMBER & SUPPLY CO.**  
1025 HAYNES STR. MI 4-3636

Between Adams & Hunter—5 Blocks South of Maple (East of Greenfield's)  
Hours: Mon. Thru Fri. 7:30 to 5:30 P.M.—Sat. 7:30 to 4 P.M.



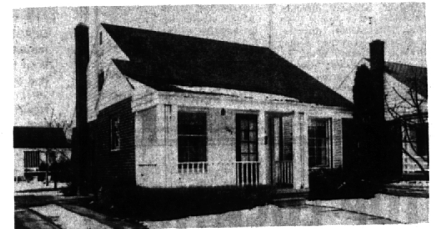
YOU OWE IT TO YOURSELF—to see this Bloomfield Village home. The warmest, the most welcoming family room with beamed ceiling and fireplace. 3 bedrooms, 2½ baths, gracious dining room plus large recreation room. Beautifully decorated and practically NEW CARPETING. \$39,900.



SO MANY GOOD THINGS ABOUT IT! Bloomfield Hills mailing address. Exceptionally well kept. Quick possession. Humidified and air-conditioned. 3 bedrooms, 2 baths, dining room and family room. Built-in oven and range. SEE IT!



LIKE MORE ROOM FOR YOUR "BIG FAMILY"? This 6 bedroom 5½ bath is on two acres near Bloomfield Hills Country Club. Great modern kitchen, family room and paneled recreation room. Completely air-conditioned. Lawn sprinkling system front and rear. A WEALTH OF SPACE!



ONE THOUSAND DOLLARS DOWN—and Quick Possession! 3 bedrooms (2 down—1 up). Second floor has small room that could be used as a 4th bedroom. Immaculate and good floor plan. Recreation room and screened porch. \$17,500.



... AND YOU SHOULD SEE THE BACK YARD! Beautiful grounds with secluded patio. Four bedrooms and 2½ baths. Fireplace in family room as well as in living room. Carpeting and draperies. Immediate possession and walk to Harlan School. \$31,900.

## Weir, Manuel & Snyder, Inc.

298 South Woodward  
Birmingham, Michigan Realtors

Phones: Birmingham 644-6300  
From Detroit 566-2323