

**Plastics • Computer • Teacher**  
**MARK WESSEL**  
 Studio at 3815 Old Indian Trail  
 Orchard Lake  
 Phone 682-1452

**APTITUDE TESTS**  
 enable you to learn the kind of work to which you can best succeed, the studies best for you. For men, women, boys and girls.  
 Vocational Counseling Institute  
 Daniel L. Bush, Director  
 722 Fox Theatre Bldg.  
 17 Years Serving Detroit  
 (Formerly in Macaheen Bldg.)

### Insurance Men Honored in Sales

Edward Toti of 17151 Richard, Southfield, and William Mansfield of 626 Yarboro, Bloomfield Hills, were honored Feb. 28 in Coronado, Calif., for their outstanding sales records, by the Equitable Life Assurance Society of the U.S.  
 They attended the society's National Leaders Conference at the Hotel del Coronado, and each received a plaque symbolic of his production record during 1962.



CHARLES F. MOORE

### Moore Granted Early Retirement At Ford Motor

Charles F. Moore, Jr., of 405 Lahser Road, Bloomfield Hills, vice president—public relations, has requested and has been granted early retirement, Henry Ford II, chairman of the board, Ford Motor Co. announced.  
 Moore, who reached his 60th birthday Tuesday, will have completed 11 years with Ford on March 15, the effective date of his retirement.  
 As vice president—public relations, Moore has directed both the Public Relations Staff and the Civic and Governmental Affairs Office.  
 Shortly after April 15, Mr. and Mrs. Moore will reside at Brick Hill Road, Orleans, Mass.

### Bearing Division Selects Director

Hudson B. Scheifele, 30091 Ponds View, Birmingham, has been named director of research, development and application engineering for the Bower Roller Bearing Division, Detroit. Bowers is a division of Federal-Mogul-Bower Bearings, Inc. Scheifele has been with Bower's engineering group since 1948, after being graduated from the University of Michigan. He had been in charge of application engineering prior to his new assignment.

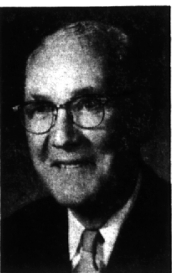
### Lathrup Man Is Elected At Wakefield

Harry M. Morris, 18610 San Diego, Lathrup Village, has been elected to the Board of Directors of Wakefield Corp., Detroit.  
 Morris joined Wakefield in December, 1961, as treasurer and controller, a position he presently holds.  
 Prior to joining Wakefield, he was controller of the Almor Corp. in Detroit from 1959 to 1961. He held various management positions in finance with the Ford Motor Co. between 1950 and 1959.  
 From 1946 to 1950, Morris was with the certified public accountant firm of Touche, Ross, Bailey and Smart of Detroit.  
 He served as an investment analyst with the National Bank of Detroit from 1941 to 1946.

**Skillsman Attends Insurance Seminar**  
 Philip N. Skillsman of 1289 Stanley, Birmingham, attended an advanced underwriting seminar Feb. 25 and March 1 in Chicago, Ill., devoted to a study of business insurance and insurance for estate planning, according to Birmingham-Detroit General Office of New York Life Insurance Co.  
 This seminar is part of an extensive agent education program conducted by New York Life on a continuing basis throughout the country.

### Retirement Party Honors President

A retirement party for Michigan Life Insurance Co. president Walter H. Ekberg of Royal Oak was held Friday at Devon Gables with Scott E. Lamb of 6301 Sheringham Road, Birmingham, as toastmaster.  
 Lamb is chairman of the board and immediate past president.  
**Gets Merit Award**  
 The Birmingham General Office of the Ford Tractor Division has received the National Safety Council's "Award of Merit" for completing nearly two million hours without a lost-time accident.



W. SYDNEY GILBREATH, JR.

### Securities Firm Elects Chairman

W. Sydney Gilbreath, Jr., president of First of Michigan Corp., since 1943, was elected chairman of the board at a recent meeting of the board of directors.  
 A resident of 416 Puritan Road, Birmingham, Gilbreath will continue as chief executive officer.  
 One of the founders of First of Michigan Corp. in 1933, he was elected president of the firm in 1943.  
 His entire business career has been in the investment securities field, starting in Chicago with the National City Co., a subsidiary of National City Bank.

**LATER HE BECAME** head of the bond department of the Security Trust Co., Detroit, and a vice president of the First Detroit Co. First of Michigan Corp., members New York Stock Exchange, maintains headquarters in the Buhl Building, Detroit.  
 In addition to New York, the firm also has offices in Chicago, Columbus, Battle Creek, Bay City, Birmingham, Flint, Grand Rapids, Grosse Pointe, Lansing and Muskegon.



ALAN B. COOK

### Manager Is Announced for Abitibi Corp.

C. H. Rosier, vice president, Abitibi Power & Paper Co., Ltd., has announced the appointment of Alan B. Cook as vice president and general manager of Abitibi Corp.  
 Cook, of 1250 Wakefield, Birmingham, joined Abitibi Corp. in May of 1961 as general sales manager and became vice president—sales in 1962.  
 Prior to joining Abitibi, Cook had been vice president of sales and a member of the Board of Directors of the Grand Rapids Gypsum Co.  
 Abitibi Corp. operates a modern mill at Alpena, manufacturing an extensive line of specialty hard-board products.  
 Sales headquarters are located in Detroit, with divisional offices in New York, Dayton and Chicago.

### Open Builders Show

The Builders Home, Furniture and Flower Show opened in Cobo Hall, Detroit, on Friday. Exposition hours are 11 a.m. to 11 p.m. through Saturday and 11 a.m. to 8 p.m. on closing day, Sunday.

### WATER SOFTENERS

**REYNOLDS All Fibre-Glass Fully-Automatic Water Conditioners** (patented) with our LIFETIME GUARANTEE against Rust, Corrosion, and Leaks will soften more water and remove more iron, for less operating cost, than any other water softeners ever made.  
 Your present softener can probably be converted into a Reynolds Automatic. Investigate—No obligation.  
 Factory sales, installation, and service (We service all makes)

**REYNOLDS Water Conditioning Company**  
 Michigan's oldest and largest water conditioning company... since 1931  
 12100 Chevrolet, Detroit 4, Mich.  
 WEATHER 3-3800  
 Priced Right and Fully Guaranteed



**Uncle John's PANCAKE HOUSE**  
 It's New  
 Uncle John's New Luncheon and Dinner Favorites. Delicious  
 U. S. Choice Griddle-burger, most coast sandwiches and cool, crisp salads...  
 Plus his "39 Varieties of World Famous Pancakes."  
 Private Dining Room For:  
 • Meetings • Banquets  
 • Weddings • Anniversaries  
 • Birthdays (all ages)  
 14½ Mile & Woodward  
 MI 4-2727  
 Birmingham  
 Hours Sun. thru Thurs.  
 7 a.m. to 12 p.m.  
 Fri. & Sat. 7 a.m. to 2 a.m.



**Pearl's Garden**  
 OPEN 7 DAYS A WEEK  
 11 A.M. to 10 P.M.  
 LUNCHEONS 75c up DINNERS 1.25 up  
 FAMILY DINNERS PRIVATE PARTIES Chinatown Style Welcomed  
 CARRY OUT ORDERS  
 Phone MI 4-2913  
 469 S. WOODWARD BIRMINGHAM  
 CHINESE AMERICAN

### VILLAGE OF FRANKLIN VILLAGE ELECTION

TO THE QUALIFIED ELECTORS:  
 NOTICE IS HEREBY GIVEN THAT AN ELECTION WILL BE HELD IN THE VILLAGE OF FRANKLIN, County of Oakland, State of Michigan, at the

#### FRANKLIN SCHOOL

Franklin Road and Romany Way within said village on—

**MONDAY, MARCH 11, 1963**

For the Purpose of Voting for the Election of the Following Officers, Viz:

- ONE VILLAGE CLERK
- ONE VILLAGE TREASURER
- THREE TRUSTEES FOR TWO YEARS
- ONE VILLAGE ASSESSOR

Polls will be open from 7:00 a.m. to 8:00 p.m.

Elsie M. Garwood  
 Village Clerk

### SPECIAL ELECTION

To the Qualified Electors:  
 NOTICE IS HEREBY GIVEN, That a Special Election will be held in the Villages of Beverly Hills and Bingham Farms, County of Oakland, State of Michigan

AT

ALL PRECINCTS  
 within said Village on

**Monday, March 11, 1963**

#### FOR THE PURPOSE OF VOTING ON THE FOLLOWING PROPOSAL:

Shall the following described property located within the County of Oakland, State of Michigan and described as follows:

Land in the Village of Bingham Farms, Oakland County, Michigan, described as:

Part of the S. W. 1/4, Section 4, Town 1 North, Range 10 East, Southfield Township, Oakland County, Michigan, described as:

Beginning at the center of Section 4, thence S. 3° 22' E. 501.24 feet along the North-South 1/4 line; thence S. 88° 24' W. 800.00 feet parallel with and 501.00 feet South of the East-West 1/4 line; thence N. 3° 22' W. 501.24 feet to a point on the East-West 1/4 line; thence N. 88° 24' E. 800.00 feet along said 1/4 line to the point of beginning. Containing 9.2011 acres.

be detached from the Village of Bingham Farms and annexed to the Village of Beverly Hills pursuant to the provisions of Act No. 278 of the Public Acts of 1909 as amended?

Notice Relative to Opening and Closing of the Polls  
 ELECTION LAW, ACT 116, P. A. 1954

SECTION 720. On the day of any election, the polls shall be opened at 7 o'clock in the forenoon, and shall be continuously open until 8 o'clock in the afternoon and no longer. Every qualified elector present and in line at the polls at the hour prescribed for the closing thereof shall be allowed to vote.

THE POLLS of said election will be open at 7 o'clock a.m. and will remain open until 8 o'clock p.m. of said day of election.

BETTY J. CHINN, Clerk of Beverly Hills  
 EVELYN WHYBREW, Clerk of Bingham Farms

### SPECIAL ELECTION

To the Qualified Electors:  
 NOTICE IS HEREBY GIVEN, That a Special Election will be held in the

Villages of Beverly Hills and Bingham Farms  
 County of Oakland,  
 State of Michigan  
 within said Village on

**Monday, March 11, 1963**

#### FOR THE PURPOSE OF VOTING ON THE FOLLOWING PROPOSAL:

Shall the following described property located within the County of Oakland, State of Michigan and described as follows:

Land in the Village of Bingham Farms, Oakland County, Michigan, described as:

Part of the S. W. 1/4, Section 4, Town 1 North, Range 10 East, Southfield Township, Oakland County, Michigan, described as: Beginning at the center of Section 1, thence S. 3° 22' E. 501.24 feet along the North-South 1/4 line; thence S. 88° 24' W. 800.00 feet parallel with and 501.00 feet South of the East-West 1/4 line; thence N. 3° 22' W. 501.24 feet to a point on the East-West 1/4 line; thence N. 88° 24' E. 800.00 feet along said 1/4 line to the point of beginning. Containing 9.2011 acres.

be detached from the Village of Bingham Farms and annexed to the Village of Beverly Hills pursuant to the provisions of Act No. 278 of the Public Acts of 1909 as amended?

#### THE LOCATIONS OF THE RESPECTIVE VOTING PLACES ARE AS FOLLOWS:

- PRECINCT NO. 1—CHURCH OF THE ASCENSION, LUTHERAN, 14 MILE AND PIERCE ROAD
- PRECINCT NO. 2—GREENFIELD SCHOOL, FAIRFAX, NORTH OF 13 MILE ROAD.
- PRECINCT NO. 3—CHURCH OF THE ASCENSION, LUTHERAN, 14 MILE AND PIERCE ROAD
- PRECINCT NO. 4—BEVERLY SCHOOL, BEVERLY ROAD WEST OF SOUTHWILD
- PRECINCT NO. 6—DETROIT COUNTRY DAY SCHOOL, 13 MILE AND LAHSE ROAD.

Notice Relative to Opening and Closing of the Polls  
 ELECTION LAW, ACT 116, P. A. 1954

SECTION 720. On the day of any election, the polls shall be opened at 7 o'clock in the forenoon, and shall be continuously open until 8 o'clock in the afternoon and no longer. Every qualified elector present and in line at the polls at the hour prescribed for the closing thereof shall be allowed to vote.

THE POLLS of said election will be open at 7 o'clock a.m. and will remain open until 8 o'clock p.m. of said day of election.

BETTY J. CHINN, Clerk of Beverly Hills  
 EVELYN WHYBREW, Clerk of Bingham Farms

### HERE WE GO AGAIN!

**2nd ANNIVERSARY CELEBRATION**  
 TUESDAY, WEDNESDAY, THURSDAY—MARCH 12, 13 AND 14

**EVERY ITEM ON THE MENU**

**1/2 PRICE!!**  
 • 39 Varieties of Pancakes and Waffles  
 • 12 Delicious Varieties of Eggs and Omelets  
 • Southern Fried Chicken  
 • Superlative Steak, Fish and Ham Steak Dinners  
 • Hearty Salads • Beautiful Sandwiches  
 • Banana Splits, Sundae, Mails

**GOLDEN GRIDDLE PANCAKE HOUSE**  
 3017 N. WOODWARD, 1½ BLOCKS SO. OF 13 MILE RD. • LI 9-2900



### IT'S NO FISH STORY

**NORTHWOOD INN**

**LENTEN MENU**  
 For LUNCHEONS and DINNERS

- Include—Fresh Rocky Mountain Rainbow Trout
- Fresh Florida Pompano and Red Snapper
- Fresh Wisconsin Frog Legs
- Fresh Maine Coast Lobster
- Fresh Lake Erie Perch
- Fresh Lake Superior Whitefish

(These FRESH ITEMS are shipped direct to us several times a week. Why settle for less?)

Also serving Shrimp, Scallops, Fried Tendersweet Clams, Rock Lobster Tails and Other Seafoods including Dover Sole

WOODWARD AT 11½-MILE RD. JO 4-6688 — LI 1-2577