

Potpourri

by JULIE CANDLER
Special Writer



If the talent around these Birmingham and Bloomfield Hills should turn to gold, we'd all be rich.

Take, for instance, Celia Merrill Turner, who has the musical talent to conduct the Pontiac Symphony Orchestra occasionally. She can also act, direct, coach and teach. It's amazing how often you read in the newspapers about some noteworthy young actor or actress who studied at Celia Turner's Will-O-Way Apprentice Theatre, W. Long Lake Road near Telegraph.

LATEST To come to Potpourri's attention is the beautiful Martha Henry, who is appearing in several Canadian dramatic telecasts this season.

At the Stratford Festival in Ontario last summer, Martha played the small role of Lady MacDuff in "Macbeth" magnificently. She was understudy for the part of Lady Macbeth. She's expected back at Stratford this season, we're told.

Celia Turner says Martha started at Will-O-Way when she was 13 and spent about four years there before she went to college.

You saw another Will-O-Way alum if you watched the TV rerun of "Peter Pan" with Mary Martin. Ex-Will-O-Way apprentice (three and a half years), Maureen Bailey, flew off with the part of Wendy.

ANYONE WHO follows Detroit resident theater groups knows who Martin Shaker is. This former apprentice of the Bloomfield Hills theater school has performed off and on at Vanguard Playhouse, The Station, The Unstable and at the Wayne State University Theatre.

"I think he can go places in the theater," says Celia of her ex-pupil.

Of the two actresses, she makes the probable understatement that, "I think both those girls got a little something from Will-O-Way."

THE LATEST Will-O-Way production, by the way, is Christine Alda Turner, daughter of Celia and Kenneth E. Turner, Jr. She was born Feb. 9 and has two older sisters and a brother.

Christine has made her debut in time for her mother to launch a new term March 4 for drama students and three new modeling courses March 11. One of the modeling classes is being started by popular request from the Organization Woman. It covers how to put on a fashion show, from commenting to coordinating the whole big production.

Will-O-Way is holding open house Sunday, when students will perform at 3 p.m. and 8 p.m.

BECAUSE I like artist Robert A. Thom and the university where he teaches a night class for adults, the first thing I asked him the other day was, "How's everything out at MSU?"

"You mean at Oakland University?" asked Bob.

I'm still writing 1962 on my checks. With me, it's always going to be MSU, even though I think Oakland University is a better name.

I LOOKED over the household bookshelves for "Uncle Tom's Cabin" recently when referring to the famous ice-creaming scene. I couldn't find it to check a name, so I trusted my feeble mind. Which was a serious mistake.

Grace Wilson, editor of the weekly newspaper, The Lake Orion Review, says I owe an apology to Eliza and that Little Eva demands a retraction. I hereby publicly set the record straight: Eliza crossed the ice in Cornelia Otis Skinner's famous book — or was it Margaret Mitchell's?

GETTING BACK to talent in our towns, it got a multiple exposure last week end at Seaholm High School. Every one of the Prosemin members appearing in "Midsummer Night's Dream" talented well.

The Potpourri special talent selections include Vince Rogers, Sue Alkins, George Watkins and Ann Russell. And, of course, Director Dick Bagby and the play's author.

High school students and adults in the audience loved the show. By Saturday night, so many people were turning out to see it that they had to send a lot of them away. Too bad Seaholm doesn't have a bigger auditorium.

Birmingham Insurance Agency

114 S. Woodward

Representing:

- AMERICAN GROUP
- GENERAL-SAFECO
- HOME INS. OF NEW YORK
- PRUDENTIAL
- ORIO CASUALTY CO.
- ST. PAUL GROUP
- TRAVELERS

MI 4-2422

"After We Sell We Serve"



OSCAR P. PETERSON
BRUCE F. RANDALL
FRANK W. WHITSON

NEED A LOAN TODAY?

Get it without delay!

When you need extra cash for a worthwhile purpose, borrow it quickly and confidentially at Manufacturers Bank. Making Personal Loans is our business. You may borrow \$300, \$500, \$1000 or more at bank rates, with payments tailored to your budget.

Need a loan today? Get it without delay at any office of Manufacturers Bank.



MANUFACTURERS NATIONAL BANK

1657 West Maple Road near Telegraph, Bloomfield
1012 N. Hunter Boulevard, Bloomfield Twp.
Woodward N. at Wellesley, Pleasant Ridge
Telegraph near Ten Mile Road W., Southfield

Arts Festival Initiated by O. U. Students

Oakland University's first student-sponsored Fine Arts Festival will continue through Sunday in the Gold Room of the student center.

The five-day program includes concerts, dramatic readings, a dance presentation, an evening of one-act plays, and a student art competition.

Forty students organized the affair, which is intended to encourage students to develop and apply their own talents. Chairman John Gillespie said it is as much for the benefit of the participants as for the entertainment of the audience.

The students hope to establish the festival as an annual event.

BUSINESS MANAGERS are Max Marshall, a freshman, of 1445 W. Square Lake Rd., Bloomfield Hills, and J. Anthony Hammer, 21 senior, of 1259 Yorkside Blvd., Birmingham.

Others from the Birmingham area participating in the festival are Judith Rau, 17, a freshman, of 6155 Wang Lake Rd., who will present a dance variation from Tchaikovsky's "Sleeping Beauty," and Howard Coffin, 23, a sophomore, of 1150 Puritan, who is in the cast of a one-act play, "The Sandbox."

Today's program will be three one-act plays and a dance number. Friday, the Japanese movie "Ugetsu" will be shown. Saturday night's program will be another evening of one-act plays.

At 3 p.m. Sunday, there will be a concert with both student and faculty performers, a ballet number, and poetry readings.

At the end of the festival, the outstanding student art work will be awarded a \$20 prize.

Yogi Demonstration Scheduled by BAA

Yogini Helen Swan of Royal Oak, will bring members of her Yoga group to the Bloomfield Art Association's Birmingham Art Center Mar. 15, as a program in the association's regular series.

In describing the demonstration

Bridge

(Continued from 1-D)

mington tournaments include: Jim Crab and Jim Fenwick; Greta Howard and Ollie Swarzwald; Mary Malche and Norma Keller; George Alderton III and Marie Lutz; Max and Maxine Norden; Pat Holloway and Fran Greenwald; Lullie Brunk and Edwin V. Clarke; Tom Batton and Jerry Cooper; Herb and Pat Beyer; Flo Fisher and Minnie Salam.

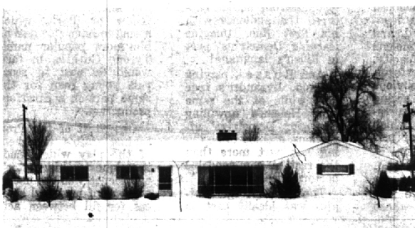
The Spring Nationals will be held at St. Louis this year, starting Mar. 18. It is a must for all top bridge players.

However, if you cannot attend, the best we can do is to offer you the National Competition, here at home on Mar. 20.

The hands played in St. Louis will be duplicated and we will have them here and you can play them against the entire country. You could win national honors or many master-points by just beating the local competition.

You may have a better chance if your partner is a life-master, and I can arrange a life-master as your partner if you will make a contribution to the National Charity. If you are interested, call or contact Ed Clarke or myself.

PICK YOUR TYPE and SITE!



GLENCOE ESTATES

Bright, Cheery Country Ranch in Bloomfield School District. Large entry hall. Living room with fireplace. Dining room. Family room, 3 Bedrooms, 2 full baths. Carpeting and Draperies. VERY, VERY CLEAN and most attractive. 5 1/2% conventional mortgage available to qualified buyer. PRICE JUST REDUCED for quick sale. Now \$28,700.



FRANKLIN WOODS

High site with beautiful trees. Winding blacktop roads. Wing Lake and Bloomfield Schools. Sale entry. 24-foot Living-Dining room with fireplace. Large Family room, too. 3 Bedrooms, 2 full Baths. Kitchen with built-in oven, stove, dishwasher. A really beautiful "Country House" for only \$25,500.



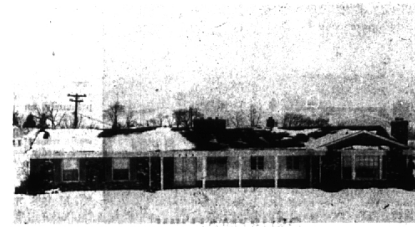
BEVERLY R. O.

Solidly built Brick with full Basement and plastered walls. Pretty stone fireplace in living room. Jalousied Porch with draperies. Carpeting in most of house. Real Value at \$22,900.



COLBERRY PARK

Tri-level with wonderful space for a happy, active family. 4 large Bedrooms, 2 Baths and a Lav. Living room with fireplace. Separate Dining room. Huge Family Room with fireplace. Kitchen and excellent breakfast room. Carpeting, Intercom. Merion Blue lawn. Lovely landscaping. Hickory Grove and Bloomfield Hills High School. A FINE BIG HOUSE for \$32,900.



WILLIAMSBURG

A Luxury home with quality detail and De Luxe inclusions. Step-down Living room with view at rear. Step-up formal Dining room. Master Bedroom suite with dressing room, vanity and bath. 2 other large Bedrooms. Family room with beamed ceiling, pegged floors, bookcases. SUPERIOR KITCHEN with everything and a barbecue. Tremendous storage space. 3-car Garage. Lush carpeting. A COLONIAL RANCH with everything you could desire in perfect condition. \$41,900.

SNYDER KINNEY & BENNETT INC.

Realtors

239 S. Woodward, Birmingham MI 4-7000
32740 Franklin, Franklin MA 6-9600



Wherever you want to live—
SEE US—We are now affiliated with the largest inter-continental referral system in the entire United States. Reputable—Reliable—Resourceful American Institute of Marketing Systems, Inc.