

'Perfect Cocktail Party' Isn't Perfect

Charlotte Edwards, the author of an article "How To Have the Perfect Cocktail Party" which appeared last fall in an issue of "Suburbia," gave such excellent suggestions that if one had 50 friends, he would be tempted to race right out and invite 'em in for the Perfect Cocktail Party.

However, one silly little cloud persisted in the mind after reading her delightful advice: Wouldn't the hostess (or host) wake up the next morning with a horrible sensation of "oh-h-h how much all that trimming cost!"

I MEAN, if one figured, like she did, on a bartender (a couple if all guests invited accepted), one maid to pass her d'oeuvres, two high schoolers to park cars so a jam wouldn't disturb the neighbors, another helper beforehand to make the sandwiches, not to speak of the bottles opened and emptied, well, what I mean . . .

Wouldn't it be simpler and cheaper to just send out word to the 50 friends: "Hey, come on over Saturday night around eight. We're going to break open Uncle Joe's keg of home-made wine. Alice will

supply the crackers."

THAT WOULD be so lasa complicated. Maybe it'd be more fun too?

Just think of 50 folks standing about a huge keg of Uncle Joe's good wine down in the basement. With such a simple announcement as this, one would eliminate at once one bartender (two if all came), one maid, two high-schoolers to park cars (pretending the guests decided to walk over the couple of blocks) and the price of the hor d'oeuvre lady since Alice

planned on serving just plain crackers taken fresh out of a box.

AND LIKE all kegs, Uncle Joe's would become emptied, and no keg can be replenished before another year (in case good wine is desired) the 50 good friends would have to start doing what they were invited for in the first place—they'd have to talk and visit with one another!

Rapture carries one away at such vision. Real honest-to-goodness homey talk would flow like the wine did the hour before.

AND MAYBE after the last soda cracker was shaken from the box and the crumbs picked up with the thumb, someone might yawn and stretch and exclaim:

"Oh, by glory. It's ten o'clock. We've had a jolly two hours tasting Uncle Joe's wine and it's time we all moseyed home." But none of the 50 would trip up the cellar stairs until they had grabbed Joe's nephew (and niece's) hand to say:

"Please don't forget us, huh, when it comes time again next year to open the keg? We'll bring our own crackers even!"

And they'd end by remarking what a real visiting time was had by all.

One can day-dream without it costing so much, can't one?



A Quiet Corner

Suitable for a study alcove, book work or office area is a corner arrangement of desk, drawers and cabinets. Aluminum extrusions used as structural elements accent a whole line of co-ordinated pieces, ranging from beds and chairs to cocktail tables. Used in the corner arrangement are one large three-drawer unit, one small two-door unit, one 20-inch shelf, one desk table, one side chair, four 65-inch aluminum uprights and two 30-inch aluminum uprights.

Leaf, Bibb Lettuce Lead Sheltered Life

The weather outside "may be frightful," but inside greenhouses in the Grand Rapids area 30 acres of leaf and Bibb lettuce are growing.

From October until May this area supplies these top quality, tender salad greens for Michigan tables, according to marketing agent, Mrs. Josephine Lawyer.

It takes six weeks for fragile heads of Bibb lettuce to become fully formed while leaf lettuce harvest begins eight to 10 weeks after seedlings are planted. Production is highly specialized and painstaking care is given to ship top quality products.

AS EACH head of Bibb lettuce is cut from its root, it is carefully placed stem-end-up in a five-pound basket. The basket is lined with

soft, porous, white paper to protect the lettuce and to insulate it against abrupt temperature changes.

Leaf lettuce is placed into 10-pound baskets alternating the direction of layers. The baskets pass through a washer to clean the lettuce and to chill it to 40 to 50 degrees.

All greenhouse-grown lettuce moves to market in temperature-controlled trucks.

In the retail store, the care with which greenhouse lettuce is unpacked makes a difference in the condition of the lettuce the shopper purchases.

SHOPPERS ALSO have a responsibility to avoid cracking or bruising the delicate leaves. Handle greenhouse-grown let-

tuce with care for it is more fragile than field-grown lettuce. Wash in cool water and pat dry.

To store for a day or two, sprinkle with cold water, place loosely in a plastic bag and refrigerate in the hydrator.

What's the difference between "virgin wool" and "wool"?

Virgin wool is all new material, processed directly from sheep's back to the finished product. The Federal Trade Commission guarantees quality of virgin wool. It costs more, but has longer life and better appearance.

"Wool" is fleece wool used for the first time in a completed wool product. However, manufacturer may recomb and respin yarn originally intended for another use and still label it "Wool."

Seek Suit 'Story' on The Inside

The inside story of a man's suit is as important as its outer appearance, according to the National Institute of Drycleaning.

Drycleaners are concerned for the service qualities of clothes and urge men to look at both the inside and the outside of the suits they buy.

A suit coat with a "good inside story" should have a coat front that is properly shaped with Hymo hair canvas or equivalent.

The lining should be hand-basted and have linen type interfacing. The collar of the coat should have a hand-basted linen interfacing.

The armholes of the coat ought to be reinforced with tape and the inside shoulder padding should be fitted to give a smooth line.

THERE ARE two methods used in making a man's suit coat—the machine and the open method.

In the machine method the shape is obtained by pressing. In the open method the coat is hand-shaped and pressed.—The second method adds durability and better fit.

You can recognize the open method by the hand-sewn seam under the top shoulder seam. The seams of the coat should be wide, well sewn, bound or bluffed. Only after repeated wearings and cleanings does the difference in the two methods come to light.

THE OUTSIDE story of the coat is important, too.

There should be accurate matching of pattern, seams, collar and pockets. The collar should fit well and the coat should have the proper shoulder drape.

Stitching thread and lining fabrics ought to match or harmonize with the outer fabric.

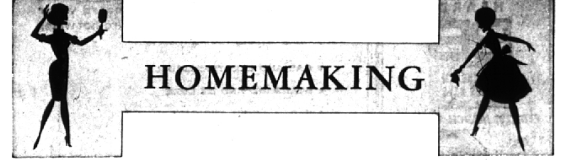
Check the lines of the garment. This means a smooth, easy fit, ample armholes, elbow width of becoming proportions.

Buttonholes may be hand made or machine made. The hand sewn buttonhole is softer and is a sign of quality.

Pocket windings and flaps should be neat and of fashionable depth.

TROUSERS may be pleated in front or plain. Both are stylish. The trousers should be neatly tailored and free of all loose threads.

Belt loops ought to be well spaced and securely anchored. Belt and pocket linings should be of good quality lining fabric. Pockets should be of proper size and depth and stitched securely.



HOMEMAKING

Tea Once Came in Cakes

Did you know that early Chinese tea actually took the cake? The fresh, tender leaves of the tea plant were sun-dried, steamed, and then pressed lightly into flat, circular cakes about the size of today's layer cake pans.

An 8th Century Chinese authority on tea gave the following instructions for making 3 cups of "the tea beverage": 1 cubic inch of tea to 1 (Chinese) pint of boiling water. Sounds easy, doesn't it? But wait!

In spite of the difficulty of preparation, tea drinking became a very important part of the daily life of the early Chinese. They took time out of every day to enjoy several cups of hot tea.

Could we make tea now as the Chinese did so long ago? Rather than.

would we make it their way? With 24 pieces of equipment? Never! Today's team making is geared to our high speed modern life, but without any loss of enjoyment. In fact, modern methods of growing, blending and packaging give us much greater variety, and better teas.

Also needed was something to break pieces from the tea cake, a grinder to pulverize it, a sieve of bamboo and fine gauze to strain it after brewing, a tea kettle, tea pot, cups and other things.

All these pieces were kept in one or two light weight baskets of bamboo or rushes, so they could be carried easily and safely on journeys from place to place.

IN THOSE days, tea making required 24 pieces of equipment, including the tea cake which was kept fresh and fragrant by wrapping it in bamboo leaves.

Newly Devised Finishes Affect Furniture Design

New clear synthetic resin coatings for furniture will have as far reaching an effect on furniture appearance as new design, predicts the director of consumer education of the Fine Hardwoods Association.

"If the new coatings were applied over hardwoods without any previous color toning a whole new series of wood colors, texture and pattern would be found. Pinks, coppers, golds, mauve and a wide range of beige through brown-black shades would come alive," she said.

trip to the moon, and loves modern art," she commented.

ADVANCED chemistry has developed clear furniture finishes. They change the natural color of scientifically dry hardwoods only to the degree that water would. In addition to enriching the variegated tones and figure patterns of the woods, most new coatings are impervious to stain by common household liquids.

When selecting a paint color for walls, remember that any color looks darker on a large area than on a small one. This is especially true when you are choosing from a small paint chip or color card. For that reason it is wise to pick a color a bit lighter than the one that seems to be just right on the sample.

"WE ARE so tied to the past, we stay with the sedate traditional wood colors. They were evolved to cover nature's blemishes. Many traditional style adaptations have a great similarity of color. This seems odd for a nation that likes to think of itself as modern as a

THE FURNITURE industry has already made strides in the use of transparent protective finishes. The common denominator is a soft medium shade of brown stain which is applied under the coating.

Wider use of natural colors of domestic and exotic imported wood species in furniture opens a new field of possibilities.

Forty Cents Buys Tips on Income Tax

The latest information on Federal taxes is now available, R. I. Nixon, district director of the Internal Revenue Service, has announced.

"Your Federal Income Tax" can be purchased from your local Internal Revenue office for 40 cents a copy.

This booklet, the director adds, covers in detail the Federal income tax law relating to individual taxpayers. It is written in nontechnical language and contains many examples to illustrate the application of tax laws to real situations.

One interesting facet of the booklet is the filled-in sample Form 1040. If you have a problem in preparing a particular part of your income tax return for 1962, just turn to the sample.

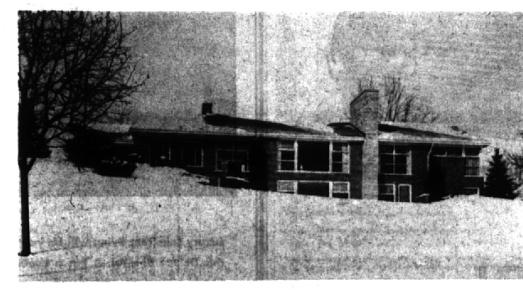
This sample return is keyed to pages in the booklet where the items on the return are explained in detail.



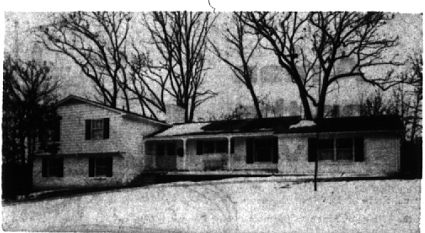
THE FINEST OF EVERYTHING—IN BLOOMFIELD VILLAGE. Four twin sized bedrooms, three baths PLUS Powder room. Separate dining room, paneled family room, recreation room and screened porch. Lawn sprinkling system. Carpeting and draperies. \$67,900.



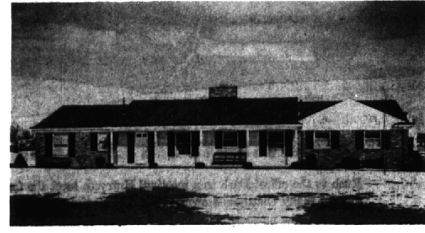
THE HOUSE WITH THE GUEST HOUSE IS FOR SALE! Real Colonial Charm in this three bedroom. The greatest "kitchen-family room" you ever saw. Brick floors, paneled walls, fire-place and built-ins. Guest house has one bedroom, living room, kitchen and bath. Near St. Regis school. \$37,800.



IT'S ALL HERE—INGREDIENTS FOR HAPPY LIVING! One hundred feet "ON THE LAKE" provides skating, fishing and swimming. Loads of room for everyone—four bedrooms and three baths. Separate dining room, library, study, den, games-room, recreation room and glassed-in porch. Three fireplaces. Built-in refrigerator and freezer. Immediate possession. Thousands below cost. \$67,900.



NEW LAST SUMMER—CLOSE IN. Roomy four bedroom. Decorator's interior includes carpets and draperies. Large family room, den and breakfast. Circle drive, patio, water and sewer plus many useful extras. Wooded, rolling area. Offered noticeably below investment. \$49,500.



LIVE WHERE YOU PLAY. Immaculate. Three bedrooms. Features large "Country" family-room plus paneled den. Hop-skip-jump to newest Birmingham elementary school. LAKE PRIVILEGE offers beach, swimming, boating, fishing, skating and community fun. \$28,500 . . . and worth it!

Weir, Manuel & Snyder, Inc.

298 South Woodward Birmingham, Michigan Realtors Phones: Birmingham 644-6300 From Detroit 566-2323