

A Wishful Look at Warmer Climes—Material

New York Designers Have Trunk Showing

An old saying which runs "The grass is always greener . . ." seems to describe well the fashion scene at this time of year—for a woman's fancy lightly turns to thoughts of spring and far-off lands and tropic isles. However, be ye not deceived by the trunks; they contain no tropic metallic treasure, but rather a collection of spring clothes designed by Abe and Mort Schrader presented in a "trunk showing" last Thursday at B. Seigel-Kay Cooley's in Birmingham. (At a trunk showing the designer takes special orders that customers seeing the show wish to place as well as giving the store an opportunity to look over the line and pick what it wants.)

Open Sesame

The collection contained dresses and costumes for both daytime and cocktail hour wear with prices ranging from about \$50 to \$90. On the far left is a silk surrah floral print two piece effect dress which could be worn for luncheons and right on through to the dinner hours. The elegance of simplicity finds form in the silk linen three-piece costume seen at the showing in beige with black binding. (It is also available in solid navy or black.) Good for traveling, going to meetings, etc., this all-around suit could be dressed up or down with accessories for the occasion.

All Passengers

For those with dreams of tropic isles and Caribbean cruises, a recent show at the Kingsley Inn put on by Ferguson's had a light wool traveling suit and "on deck" bathing suit to offer. On the far right is a black and white plaid "spring weight" wool suit. It has a long Chanel jacket with a black Patton leather belt. The suit comes with a third piece—a white sleeveless linen blouse—should the breezes become balmy and the jacket too warm. The bathing suit is made of puckered silk elastic with a "self belt." It has a matching paisley silk shirt.

On the Surface

With the added hours in the sun, many women may want to change their make-up to complement their newly acquired sun-tans. On the market is a new liquid foundation which is custom blended from a formula devised by a French make-up artist. The artist, while under contract with a Hollywood movie studio, discovered that ordinary foundations, when constantly exposed to bright, harsh light, had a tendency to change color and leave a greasy, non-flattering look. It was necessary, therefore, to develop a make-up that could be worn under brilliant lights over a long period of time without exhibiting noticeable color or textural changes. The composition of the new make-up allows a fusion of its color and textural ingredients with the natural oils and skin tones.



SEE-AT-A-GLANCE, LOTS OF ROOM! Four twin size bedrooms, dining room AND paneled library. Recreation room in BASEMENT. 20 x 12 screened porch. 11 CLOSETS! Lake privileges.



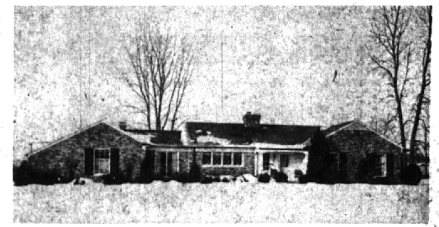
OVER AN ACRE AND RIGHT IN TOWN! Excellent floor plan in this nearly new quality quad-level. 5 bedrooms, 3 1/2 baths, family room, separate dining room, 2 fireplaces. The extras include underground sprinklers, 2 patios and extensive landscaping.



"IT'S FOR YOU, MY LOVE"—IN BLOOMFIELD VILLAGE
Four twin size bedrooms. Large living room and dining room, each with bay. Family room AND library. Quick possession, \$42,500.



A WEALTH OF SPACE—Three large bedrooms. Fireplace in living room as well as in Family room. Oceans of closet space. Carpeting, draperies and built-in oven and range. Near school. Easy financing, \$29,900.



SO MANY GOOD THINGS—WHICH COMES FIRST! Near Oakland Hills Country Club. HEATED GARAGE. Family room with beamed ceiling and fireplace. Screened porch, fenced yard and loads of storage room. True traditional feeling. \$32,500.



Weir, Manuel & Snyder, Inc.

298 South Woodward
Birmingham, Michigan Realtors

Phones: Birmingham 644-6300
From Detroit 566-2323