

# Calendar of Cultural Events

**Feb. 14**  
**BIRMINGHAM MUSICALS**—February meeting of the Birmingham Musicals at the Community House will feature duo-pianists. Program begins at 1:30 p.m. Members and their guests only.  
**VILLAGE WOMAN'S CLUB**—Sixth of eight "History in the Making" lectures at the Village Woman's Club, E. Long Lake Road, Bloomfield Hills, from 9:30 to 11:15 a.m. Speaker will be Harm de Blij of MSU.  
**BRIDGE**—Birmingham Duplicate at the YMCA, 400 E. Lincoln, Birmingham, beginning at 7:45 p.m. Open to the public.  
**BIRMINGHAM ART CENTER**—Graphics show, featuring drawings, etchings and lithographs, at the Birmingham Art Center, 1516 S. Cranbrook Road. The exhibition will run through Mar. 3. Hours are 2 to 5 p.m. except Monday.  
**CRANBROOK INSTITUTE OF SCIENCE**—Opening of exhibit, "Charles Darwin: the Evolution of an Evolutionist." Will run through March 17. Hours are 2 to 5 p.m. daily, except Monday.  
**KINGSWOOD SCHOOL ART GALLERY**—Etchings, woodcuts and lithographs done by students of the Cranbrook Academy of Arts graphics department on exhibition in the Kingswood School-Cranbrook art gallery. The show will run through Feb. 22. Hours are 4:15 to 5:45 p.m. Monday through Friday.  
**CRANBROOK GALLERY**—Two exhibits, "Photography in the Fine Arts" and "Design Investigations," at the Cranbrook Galleries will run through Mar. 3. Hours are 2 to 5 p.m. daily except Monday.  
**BIRMINGHAM THEATER**—"Barabba" starring Anthony Quinn, Arthur Kennedy, Jack Palance and Ernest Borgnine.  
**LITTLE GALLERY**—Exhibition of figure drawings by Clifford West and watercolor and oils by Bealin artist Georg Wilhelm Borsche at the Little Gallery, 915 E. Maple, Birmingham. Hours are 9 a.m. to 6 p.m. except Sundays and Mondays.  
**BLOOMFIELD THEATER**—Double feature, "Jumbo," with Doris Day and Stephen Boyd, and "Murder She Said."

**JACOBSON'S**—Exhibition of art work by area youngsters from seven through 15 years old at Jacobson's Children's Shop. Will run through Feb. 21.  
**Feb. 15**  
**TRAVELOG**—Clifford J. Kamen presents film "Holiday in Mexico" at the Community House at 8 p.m. Tickets available at the door.  
**ST. DUNSTON'S**—The St. Dunstan Guild will present "Thunder Road" at their playhouse on Lone Pine Road in Bloomfield Hills at 9 p.m.  
**CONVERSATIONS IN THE ARTS**—John Fraser Mills of Wayne State University and John Galloway of Oakland University will discuss "Roots of Modern Art" at Oakland University at 8 p.m. First of eight weekly sessions.  
**BAA**—Lecture-demonstration on graphics by Laurence Barker at the Birmingham Art Center, 1516 S. Cranbrook Road, beginning at 8:30 p.m.  
**FESTIVAL '63**—Interpretive reading of "The Madwoman of Chailott" at Marian High School at 8 p.m. There is an admission charge.  
**Feb. 16**  
**TRAVELOG**—Clifford J. Kamen presents film "Holiday in Mexico" at the Community House at 8 p.m. Tickets available at the door.  
**BWANA DON**—Bwana Don show at the Community House at 1:30 p.m.  
**FESTIVAL '63**—Interpretive reading of A. A. Milne's "The Ugly Duckling" at Marian High School at 8 p.m.  
**Feb. 17**  
**KIRK-IN-THE-HILLS**—The "Mass in B Minor" (Part 1) by J. S. Bach will be performed at Kirk-in-the-Hills at 4 p.m. by the Kirk choir, soloists, orchestra and organist.  
**FESTIVAL '63**—One-act play, "The Summons of Sarid," at Marian High School at 8 p.m.  
**Feb. 18**  
**LECTURE**—Second lecture in a series on "Early American Antiques" at the Village Woman's Club at 1:30 p.m. Speaker will be James Keene.  
**BRIDGE**—Duplicate Bridge at the Birmingham Community House at 7:45 p.m. Open to the public.  
**OAKLAND UNIVERSITY**—Poet John Woods will do poetry readings at 8:15 p.m. in the Oakland University student center.  
**Feb. 19**  
**TRAVELOG**—Robert Davis presents film "Texas" at the Bloomfield Hills High School beginning at 8 p.m. Sponsored by the Bloomfield Hills Lions Club.  
**BRIDGE**—Tuesday Birmingham Duplicate at 2424 Manchester, Birmingham, beginning at 1 p.m. Open to the public.  
**BRIDGE**—The Birmingham-Bloomfield Area Bridge Club will meet at the YMCA, 400 E. Lincoln, Birmingham, at 7:45 p.m. Open to the public.  
**Feb. 21**  
**VILLAGE WOMAN'S CLUB**—Ninth of eight Oakland University "History in the Making" lectures at the Village Woman's Club, E. Long Lake Road, Bloomfield Hills from 9:30 to 11:15 a.m. Speaker will be Dr. Roger F. Hackett of the University of Michigan.  
**BRIDGE**—Birmingham Duplicate at the Birmingham YMCA, 400 E. Lincoln, beginning at 7:45 p.m.  
**TOWN HALL**—Beverly Nichols, author of several books on gardening, will speak on "Laughter in an English Garden" at 11 a.m. in the Birmingham Theater.  
**Feb. 22**  
**FILM**—Southfield Film Society presents "The Smallest Show on Earth," an English comedy, at 8 p.m. in the Northwestern Unitarian-Universalist Church, 23925 Northwestern Highway. Admission by membership card. A panel discussion will follow.  
**TOWN HALL**—Beverly Nichols, author of several books on gardening, will speak on "Laughter in an English Garden" at 11 a.m. in the Birmingham Theater.  
**ART SHOW**—Exhibition of paintings by Montana artist Ace Powell at the Birmingham Community House from 1 to 10 p.m.  
**Feb. 23**  
**ART SHOW**—Exhibition of paintings by Montana artist Ace Powell at the Birmingham Community House from 10 a.m. to 10 p.m.  
**Feb. 24**  
**KIRK-IN-THE-HILLS**—"Mass in B Minor" (Part 2) by J. S. Bach performed at Kirk-in-the-Hills at 4 p.m. by the Kirk choir, soloists, orchestra and organist.  
**Feb. 25**  
**SOUTH OAKLAND SYMPHONY**—The South Oakland Symphony Orchestra will present Bizet's "Carmen" in concert form at the Oak Park High School at 8:15 p.m. Guest conductor will be Harry Begian.  
**BRIDGE**—Duplicate Bridge at the Birmingham Community House, beginning at 7:45 p.m. Open to the public.  
**Feb. 26**  
**BRIDGE**—Tuesday Birmingham Duplicate at 2424 Manchester, Birmingham, beginning at 1 p.m. Open to the public.  
**TRAVELOG**—Southfield Dept. of Parks and Recreation will present Ed Lark showing film, "Sweden—Year Around," at Southfield High School beginning at 8:15 p.m.  
**BRIDGE**—Birmingham Duplicate at the YMCA, 400 E. Lincoln, Birmingham at 7:45 p.m. Open to the public.  
**Feb. 28**  
**VILLAGE WOMAN'S CLUB**—Last of eight Oakland University "History in the Making" lectures at the Village Woman's Club, E. Long Lake Road, Bloomfield Hills, from 9:30 to 11:15 a.m. Speaker will be Dr. Roger Hackett of the University of Michigan. Open to the public.  
**BRIDGE**—Birmingham-Bloomfield Area Bridge Club at the YMCA, 400 E. Lincoln, Birmingham, beginning at 7:45 p.m. Open to the public.

4-D THE BIRMINGHAM (MICH.) ECCENTRIC February 14, 1963

## PTA to Show To Hold Auditions For Soloist with Science Film Junior Symphony

"Previews of Progress", an educational science show customarily presented to high school audiences, will be the feature of the Feb. 18 Parent-Teachers Association program at Walnut Lake Elementary school, according to Don F. Johnson, PTA president.

"Previews," which is sponsored by General Motors Corporation, is narrated in non-technical language by a specially trained two-man team. The 45-minute, non-commercial presentation encourages high school students to choose careers in science and engineering by pointing out the ever-increasing opportunities in these fields of Johnson said.

The show includes nine science-in-action demonstrations designed to illustrate some of the many contributions of research and technology to modern living.

All parents of the Walnut Lake School as well as interested principals, teachers, and PTA officials of other Birmingham schools may attend the showing of the film at 8 p.m., Monday.

Remember, dial MI 4-1100 to reach Eccentric readers through efficient and economical classified.

## Mead

(Continued from 1-D)

bad, it began to become good for you?"

"This is still essentially the position today, except that now it is more 'not having it is bad for you'—it's like digestion," she said.

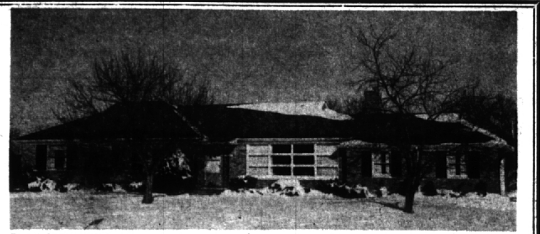
"SOME PARENTS are paying a very high price in ignoring the behavior of their children," said Miss Mead.

"Marriage is what they (the parents) are aiming at; they are trying to get their children married off."

What would Miss Mead suggest to improve the situation?

"Do away with the notion that sex is like digestion. There is nothing to show that it is necessary. . . . We ought to stop pressuring youngsters into dating. . . . Let them develop as people; let them learn about waiting."

If you are a discriminating shopper, you'll find it pays to read the classified pages of The Eccentric . . . today and every week. Read and advertise in the Classified pages. Call MI 4-1100.



**FOUR BEDROOMS**—In a scenic apple orchard setting, this rambling brick ranch is spacious throughout and neat as a pin. There are 2 sparkling tile baths plus convenient grade entry lavatory, formal dining room, cheery and spacious kitchen, 2 fireplaces, full basement, and attached 2 car garage. With nearly new carpeting—YOU'LL ENJOY IT! \$36,500.

BIRMINGHAM 345 S. Woodward MI 6-7900

BLOOMFIELD 1114 W. Maple MA 6-5900

OPEN TIL 8 P.M.

Showcase of homes HALL & YOUNG INC. REALTORS

**PICTURE FRAMING**  
 EXPERTLY DONE IN OUR OWN SHOP  
**ART SUPPLIES**  
 FOR THE AMATEUR AND PROFESSIONAL  
**ART CLASSES**  
 FOR ADULTS AND SCHOOL AGERS

Visit our ART GALLERY

1220 N. Woodward (E. Side)  
 2 blocks South of 12 Mile Rd.  
 LI 8-7680  
 Open Mon, Thru Fri, 10:00—Sat 11:00—6 P.M.

**Birmingham Insurance Agency**  
 114 S. Woodward

Representing:  
 AMERICAN GROUP  
 GENERAL-SAFECO  
 HOME INS. OF NEW YORK  
 PRUDENTIAL  
 OHIO CASUALTY CO.  
 ST. PAUL GROUP  
 TRAVELERS

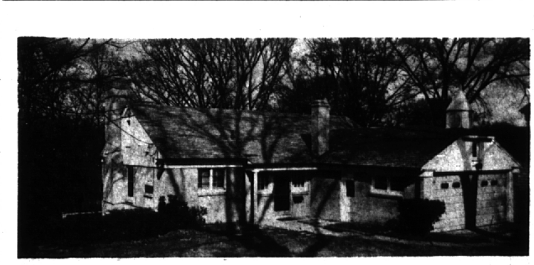
OSCAR P. PETERSON  
 BRUCE F. RANDALL  
 FRANK W. WHITSON

MI 4-2422  
 "After We Sell We Serve"

DEVELOPERS OF  
**Colonial Communities**

CONCORD GREEN  
 EAST GREENWICH GREEN  
 WEST GREENWICH GREEN  
 NOW—METAMORA GREEN

Wm. J. PULTE, Inc.  
 MASTER BUILDERS  
 BIRMINGHAM  
 MI. 6-0105  
 PULTE - BUILT - MEANS - BETTER - BUILT

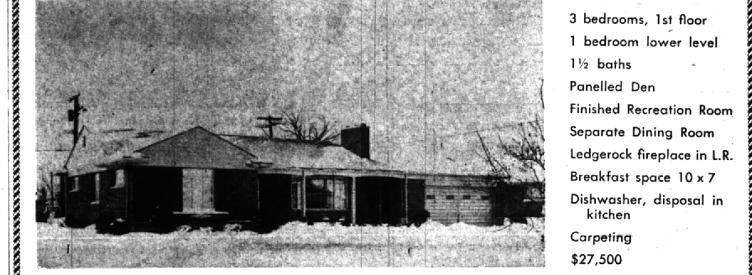


**Built To A Connoisseur's Taste**

Airily perched on the crest of a heavily wooded ravine With the Rouge River winding below, this delightful multi-level Brings all the restful quiet of the country to the very Center of Birmingham. Entrance is at ground level. On the Left is a modern kitchen and directly ahead a wonderful Living room with big picture window. There are two bedrooms And bath. Downstairs on lower level, the layout is Similar with corresponding family room, two bedrooms and Full bath. In place of the kitchen there is a useful utility And storage room. Outside, and still at high level in The trees, is a delightful screen porch. Wouldn't you like To see it? The price is right — \$45,000.

**Walsh, James & Wasey Co.**  
 Realtors Since 1918  
 431 S. Woodward Ave. Midwest 4-6500  
 Birmingham Detroit, JO 4-6033

## BIGGER and BETTER HOMES at lower cost than ever before



- 3 bedrooms, 1st floor
- 1 bedroom lower level
- 1½ baths
- Paneled Den
- Finished Recreation Room
- Separate Dining Room
- Ledge-rock fireplace in L.R.
- Breakfast space 10 x 7
- Dishwasher, disposal in kitchen
- Carpeting
- \$27,500

MEMBERS OF NATIONWIDE FIND-A-HOME SERVICE, INC.

**FRED PIERCE INC.**  
 460 NORTH WOODWARD, BIRMINGHAM, MICH.  
 Midwest 7-1414

**WHY DICKER?**

Owner has reduced his \$44,000 home from \$39,500 to \$35,900 due to business transfer. It is an immaculate 3 bedroom ranch type home with family room, 2 way fireplace, built-in range, oven, refrigerator and freezer. Finished recreation room. The finest landscaped lot, 100 x 180, 2 car attached garage. Aluminum storms and screens, dishwasher, disposal. The carpeting and drapes throughout are in perfect condition, and, of course, are included. Paved street with water and sewers. Groves High and Junior High.

See this now!

Lighting your way to better living  
**BENJAMIN & BISHOP, INC.** REALTORS  
 259 S. Woodward, Birmingham, Michigan MI 4-3232 — JO 4-5728