

### Mrs. D. B. Holt Honor Guest At Meeting

club, and an active Farm and Garden member, took bows for the beauties of setting and decor of Birmingham's newest club.

**SOME THREE HUNDRED** women from all ninety-three branches of Farm and Garden came in from all over Michigan for the forums and luncheon at the City Club. There are over 20 branches in the Birmingham area. Chairman of the day was Mrs. Russell Strickland, president of the Bloomfield Hills branch, assisted by state president Mrs. F. G. Garrison, formerly of Birmingham now living in the Detroit Towers.

The morning forums were in the capable hands of Mrs. Henry J. Beam, Mrs. W. F. McClelland, Mrs. Howard Meyer and Mrs. Donald E. Irwin. Mrs. Charlene Lo Chaback from the Bloomfield Hills branch did the decorating for the party.

### Newcomers Slate Spina

Tony Spina, of Birmingham, chief photographer of the Detroit Free Press, will be the speaker at the luncheon meeting of the Birmingham Community House Newcomers Club Feb. 21. Mr. Spina will show a series of his pictures.

Reservations for the luncheon will be taken until noon Monday, Feb. 19, by Mrs. Horace Calkins, Mrs. William Theis, Mrs. M. C. Horton and Mrs. Frank Russell. Prospective Newcomers may contact Mrs. Henry Greenley.

The Women's Auxiliary to Grace Hospital will give a green donation tea Wednesday, Feb. 20, 2 to 5 p.m., in the home of Mrs. J. King Harness of Detroit. A style show revolving around month, with Feb. 25 the deadline for filing applications. Application blanks may be secured by calling Mrs. Robert How or Mrs. Richard Yakel.

### Hospital Auxiliary Will Benefit From Hat Show

what's new in hats will be given by Jean Morton of Birmingham. Mrs. Harriet Cantor and Mrs. Don A. Young, of Birmingham, will be among those modeling the frothy chapeaus.

Other localities who will be present are Mrs. Edgar A. Guest, Mrs. Cecil Akroyd, president of the Auxiliary; Mrs. Thaddeus Stokfaks, chairman of the tea; Mrs. George S. Olmstead, Mrs. William D. Hart and Mrs. John H. Ganschow.

The Birmingham Eccentric Classified pages offer you a fine opportunity to sell your unwanted household goods.

### Women Voters Plan Meeting In W. Bloomfield

Mrs. John Hoover and Mrs. Edwin Northway will co-chairman the next meeting of the West Bloomfield League of Women Voters on Tuesday, Feb. 19, at the West Bloomfield Library at noon.

They will discuss the League of Women Voters' local program and have John Richard, West Bloomfield Township supervisor, as their guest speaker. His topic will be "Township Progress and

Future Development." Sandwiches and coffee will be furnished and guests are welcome.

Mrs. Merle Schneider, president, has announced the appointment of Mrs. Jack Strum as publicity chairman.

Voter's Guides, prepared by the League of Women Voters, will be available before the election at West Bloomfield Library and West Acres Library.

Society Dept. deadline for all organizational news, weddings and engagements announcement is 5 p.m. on the Friday preceding Thursday publication.

Open Thursday and Friday 'til 9 p.m.



Fashion leaders for over 30 years



**FEBRUARY  
FAN·FARE  
FEATURES**

special purchase event!

### NYLON TRICOAT SHIFTS

**\$3.29**

Exceptional values! Ruffles and ribbons, laces and embroidery are delightful touches on fine nylon tricot shifts. Pastels, SML.

proportioned, fully lined

### WOOL FLANNEL SLACKS

**\$8.99**

Regular 12-98

Famous-maker slacks with 'magic waistband', notable for their fine tailoring... proportioned to your size, for perfect fit. Fully lined to keep their slim shape.

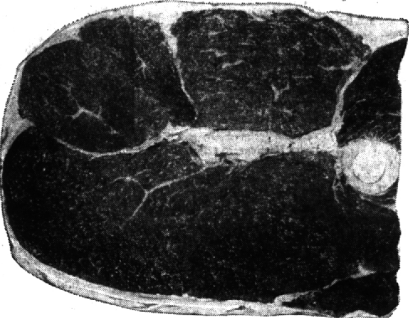
- Oxford grey
- Loden green
- Camel
- Black
- Brown
- Navy
- Red



petite regular tall



142 West Maple  
Also Royal Oak, Pontiac, Ferndale, Mt. Clemens



"Super-Right" is Fully Matured, Grain-Fed Beef

ONE HIGH QUALITY NO CONFUSION ONE PRICE AS ADVERTISED



Fresh  
Mushrooms  
LB. **49c**

### "Super-Right" Mature, Grain-Fed Beef

# STEAKS

FULL CUT ROUND SIRLOIN PORTERHOUSE

## 79¢ 95¢ 99¢

LB. LB. LB.

Boneless Rump or Rotisserie Roast LB. **89c**

"SUPER-RIGHT" FRESH OR SMOKED  
Liver Sausage . . . . . LB. 39c  
"SUPER-RIGHT" Country-Style Spare Ribs LB. 39c

"Super-Right" Matured, Grain-Fed Beef	USDA Inspected, Grade "A"	"SUPER-RIGHT" QUALITY	"Super-Right" Quality—One Price as Advertised
<b>Rib Roast</b> 4th and 5th Ribs First 5 Ribs LB. 75c First 3 Ribs LB. <b>69c</b>	<b>Turkeys</b> 6 to 8 Pound Sizes <b>39c</b>	<b>Ground Beef</b> Meat Loaf (Beef, Pork and Veal) 49c LB. <b>49c</b> LB.	<b>Pork Loin Roast</b> Full 7-Rib Portion Loin End Portion Center Chops LB. <b>29c</b> LB. <b>39c</b> LB. <b>79c</b>

**Morgan's Apple Juice** . . . . . 4 1-QT. 14-OZ. CANS **99c**

**A&P Pie Cherries** Red Sour Pitted . . . . . 2 1-LB. CANS **29c**

**Miracle Whip Salad Dressing** . . . . . QUART JAR **49c**

**Halibut Steak** LB. **49c**

LARGE SIZE



CALIFORNIA Navel  
**Oranges**  
88 SIZE **69c** DOZ.

MIX OR MATCH

### Campbell's Soups

Chicken Noodle Mushroom Vegetable Beef 6 CANS **1.00**

Lesser Quantities Sold at Reg. Retail

### A&P Bartlett Pears

### A&P Fruit Cocktail

YOUR CHOICE #2 1/2 CANS 3 1-LB. 13-OZ. CANS **89c**

Crackers SUNSHINE OR NABISCO PREMIUM 1-LB. BOX **29c**

Nestle's Eveready Cocoa . . . 2 LB. CAN **79c**

Pillsbury Flour 4c OFF LABEL . . . 5 LB. BAG **49c**

Tuna Fish BREAST OF CHICKEN LIGHT, CHUNK STYLE . . . . . 6 1/2-OZ. CAN **25c**

Ann Page Ketchup ECONOMY SIZE 2 20-OZ. BTL. **39c**

A&P Fruit Drink PINEAPPLE GRAPEFRUIT 4 1-QT. 14-OZ. CANS **99c**

Swansdown Cake Mixes ALL VARIETIES PKG. **25c**

Instant Fels . . . KING SIZE—33c OFF LABEL **99c**

Our Premium Quality—A&P Brand 10-OZ. JAR

### Instant Coffee 99c

AMERICAN CHEESE SPREAD

### Ched-O-Bit 2 LB. LOAF 59c

## FREE THIS WEEK

With Your Mailed Coupons

### 3-PIECE PLACE SETTING

of Exquisite, Colorful

## "Golden Dawn" MELMAC

DINNERWARE

Watch Your Mail for Complete Details

JANE PARKER—SAVE 16c

### Lemon or Rhubarb PIES EACH 39c

GOLDEN, CINNAMON OR SUGARED PKG. OF 12 **21c**


Jane Parker Donuts

Crestmont Sherbet or Marvel

### Ice Cream 49c

YOUR CHOICE Half Gallon Carton

THE GREAT ATLANTIC & PACIFIC TEA COMPANY, INC.



AMERICA'S DEPENDABLE FOOD MERCHANDISE SINCE 1859

All prices in this ad effective thru Sat., Feb. 16th in all Eastern Michigan A&P Super Markets

Bananas . . . 2 LB. **25c**

Tender Broccoli BUNCH **35c**

A&P BRAND FROZEN

### Vegetable Sale

CORN • MIXED VEGETABLES PEAS & CARROTS • PEAS CRINKLE CUT AND FRENCH FRIED POTATOES

YOUR CHOICE 2 LB. POLY BAG **39c**

Baby Lima Beans 2 LB. POLY BAG **49c**

Fordhook Lima Beans 2 LB. POLY BAG **49c**

WITH THIS COUPON

FOR CEREALS OR COFFEE

### Half 'n' Half 39c

QUART CARTON

Delicious for Oyster Stew too

Good through Saturday, Feb. 16th in all Eastern Michigan A&P Super Markets ONE PER FAMILY—ADULTS ONLY