

'Consumer Sense' Aim Of Detroit Exhibit

"Consumer Sense or Nonsense" can gain further protection in an informative exhibit of the Food and Drug Administration opened to the public Saturday at the Detroit Historical Museum, Woodward and Kirby. The display will continue through July 8.

The Food and Drug Administration was created through congressional legislation to ensure the rights of the American consumer to safety, to be informed, to choose, and to be heard.

ENJOYING ITS first showing in the United States, "Consumer Sense or Nonsense" delineates through the use of objects, projected film slides, photographs and animated sound, why it became necessary for federal laws to be enacted to protect the consumer, how they operate, their history, the benefits received by the consumer and how you as a consumer

can gain further protection in an informative exhibit of the Food and Drug Administration opened to the public Saturday at the Detroit Historical Museum, Woodward and Kirby. The display will continue through July 8.

The rights of the consumer to safety are detailed in special displays of quackery in medicine, medical devices and nutrition. These illustrate the constant court actions being carried on by the Food and Drug Administration to safeguard the American public from the greedy and the misrepresented. You will see the actual devices used by modern quack doctors and hear a taped recording of an actual nutritional quack in action.

THE FOOD and Drug Administration is a consumer protection agency of the Federal government. F. D. A. enforces the Food, Drug and Cosmetic Act which has these objectives: pure, wholesome foods safe and effective drugs, and safe cosmetics. F. D. A. also enforces the Federal Hazardous Substances Labeling Act and several other laws passed by Congress to protect the public health and welfare.

This exhibit is an illustration of modern science working through law to protect the consumers of food, drugs, and cosmetics.

The idea of creating this exhibit to inform the public of the work of the Food and Drug Administration originated with Henry D. Brown, director of the Detroit Historical Museum and Mrs. Mary Jane Bostick, the Detroit consumer consultant for the F. D. A.

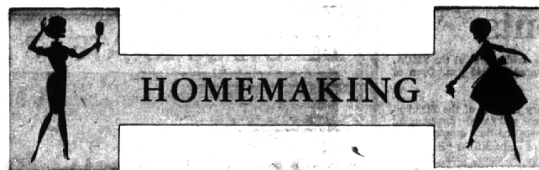
Through the initiative of their imagination the exhibit has been created by the Food and Drug Administration and enjoys its first showing in the United States at the Detroit Museum.

The Museum is open Tuesday through Sunday from 9 a.m. to 6 p.m., and is closed Mondays.

ferent types of suspension systems are available, some which permanently fix the spacing of the shelves, others allowing for an or down movements as the need requires.

IN HOMES Thermopane picture windows, the shelving can be installed in the space under the windows to add to the attractiveness and utility of the room without hampering the view. Where floor-to-ceiling glass areas open up an entire outside wall, the shelves can be built into a room divider or against an interior partition.

Also, remember that bookshelves can do double duty as a display area for trophies, hobbies or valuable china or bric-a-brac which can be tastefully arranged on shelves or in individual sections.



Wall Shelves May Solve Storage Space Problems

When dwindling storage space makes it hard to keep a growing collection for books within easy reach, consider the possibility of wall shelves. You'll find they are easy to install and make an ordinary wall into a functional as well as a decorative asset.

Once you begin studying your home, it's surprising the number of places you will discover for bookshelves in such locations as the living and family room, den, bedrooms and even hallways. And, room size is of little consequence as the average shelf takes up only about a foot of the width or depth which is hardly noticeable.

ONE OF THE handy things about wall shelves is their versatility. They will fit successfully into practically any nook and

handle a remarkable number of books in a comparatively small space. They can be used to line an entire living room wall, transforming one end of it into a restful library. Built into the headboard, they make a handy study alcove around a bed and surrounding a fireplace they make a comfortable reading center. Doors and windows are no problem as the family should carry. There are many alternatives.

For those with limited incomes, term insurance offers a temporary means of providing maximum protection for the least cash outlay. It is written for a definite period, usually 5, 10 or 15 years. If the insured outlives the term, his policy ends and there is no cash or surrender value at the end of the term.

WHILE TERM policies require



WALL SHELVES offer a simple and inexpensive means of expanding book storage. Easy to install, they transform wall space in forgotten corners into a functional asset. Here, a series of shelves flank a floor-to-ceiling Thermopane insulating glass window, adding color and convenience to an otherwise blank hallway wall. Several types of easily mounted suspension systems are available.

Touching Story of Machines

Machines are becoming more human every day! Now marketing researchers in the U.S. Department of Agriculture are developing instruments with the senses of touch and sight reports the marketing agent, Mrs. Josephine Lawyer.

Such instruments can measure firmness or look inside the fruit in routine inspection and grading operations.

Of course, all consumers know that "pinching and poking" are not the best ways to judge firmness or ripeness of fresh fruits and vegetables. These practices cause damage that consumers pay for in the long run.

A machine that will judge ripeness before produce gets to the retail market is good news for all.

ONE SUCH instrument, a "horoscope" can see inside apples, potatoes and other fresh products and detect hidden internal defects without affecting the marketability of normal samples that are tested.

Another instrument developed by marketing researchers is the mechanical thumb. This "feels" the firmness of apples and other fruits to determine ripeness. Although neither the mechanical thumb nor the horoscope is now ready for commercial use, both have been given highly promising results when tested under actual commercial conditions.

Although the mechanical thumb was designed primarily for testing ripeness of apples before removal from storage, the instrument is now being tested to see how widely it can be applied in bringing produce to market in its best stage of ripeness for consumers.

Thanks to research, the problem of how to tell firmness and ripeness of fruits and vegetables by "human means" may soon be a thing of the past.



Pineapple Ham Loaf

A welcome modern menu for busy hostesses features pineapple glazed ham loaf in new dress. Rows of canned pineapple half slices are placed between slices of ham loaf for a pantry shelf meal that is economical, attractive and good eating. It comes to the table ready-to-serve.

Parried new potatoes, green asparagus with Hollandaise Sauce, a crisp salad and crusty rolls are excellent accompaniments to serve with this tasty entree.

QUICK GLAZED PINEAPPLE HAM LOAF

- 2 cans chopped ham
- 1 (1-pound 4 1/2-ounce) can pineapple slices
- 1/2 cup brown sugar (packed)
- 1 teaspoon cornstarch
- 1 teaspoon Worcestershire sauce
- 1 teaspoon prepared mustard
- 1/2 teaspoon cloves
- 1 teaspoon red wine vinegar

Make 3 deep cuts in each ham loaf almost through to bottom. Place in shallow baking pan. Insert half of pineapple slice in each cut. Combine 3/4 cup syrup from pineapple with remaining ingredients. Simmer gently about 5 minutes. Four over ham and pineapple. Bake in hot oven (400 degrees F.) about 20 minutes, until hot and lightly glazed. Add rest of pineapple slices last 10 minutes. Baste frequently. Makes eight servings.

Is Your Life Insurance Up to Date?

You have to re-evaluate your life insurance program every few years and keeping it up-to-date is a never-ending business.

Why? "As your family situation changes, you may need to change your insurance program," says Mrs. Mary A. Hardy, home economist agent for Oakland County.

MRS. HARDY names three basic considerations you must make when you are determining what insurance would best cover expenses in the event of your death. Your program should at least cover, in this order:

- immediate expenses—medical, hospital, and funeral costs, and possibly outstanding bills and taxes.
- major debts, such as the mortgage on your home or debts connected with your business.
- minimum monthly living expenses for dependents.

"PEOPLE ALSO often buy life insurance as a means of saving for future retirement or for their children's education, but the primary purpose of life insurance is protection for dependents," says Hardy.

Mrs. Hardy points out that there is no set formula for determining place for trophies, hobbies or valuable china or bric-a-brac which can be tastefully arranged on shelves or in individual sections.

Railroad Club Offers Trip to Niagara Falls

The spectacle of Niagara Falls in winter splendor is the destination of Michigan Railroad Club's next railfan tour scheduled for Feb. 23.

Diesel-electric locomotives will haul a special train on an unusual routing arranged to cover a maximum distance over Canadian National Railways' freight-service-only lines.

More than half the 463-mile round trip will be on tracks no longer served by regular passenger trains.

Departing from Windsor at 8 a.m., the special train will travel eastbound via St. Thomas, Jarvis and Hamilton enroute to Niagara Falls. Return routing will be via Welland Junction, Jarvis and St. Thomas, with arrival in Windsor at 11 p.m.

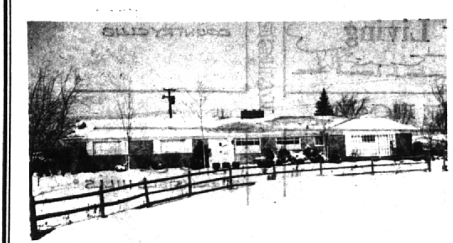
Welland Junction, Jarvis and St. Thomas, with arrival in Windsor at 11 p.m.

A 3 1/2-HOUR layover at Niagara Falls will give photographers an opportunity to gather material for entry in the "Niagara at Winter Time" International Photography Competition being sponsored by the Greater Niagara Chamber of Commerce.

The competition will be in accordance with standards set by the Photographic Society of America and the Colour Photographic Association of Canada, and winning entries will be on display at Niagara Falls during July and August.

Hot meals, soft drinks, coffee and snacks will be provided on the train, and for diesel enthusiasts there'll be at least one picture stop enroute. An optional, lettered sightseeing bus tour of Niagara Falls lasting 2 1/2 hours has also been arranged.

Tickets are on sale locally at the Grand Trunk Western ticket office in Birmingham.



WORTH THINKING ABOUT—LOTS OF ROOM! Large living room with fireplace. Great family room (12.6 x 20). Big kitchen. Four bedrooms, two baths and a lav. Extras include carpeting, radio intercom, excellent humidifier and awning over patio. \$31,500.



WOODED SITE IN TOWN! . . . ADJOINS WOODED SANCTUARY. Two bedrooms, separate dining room PLUS paneled library. Good storage and work room. Many extras.



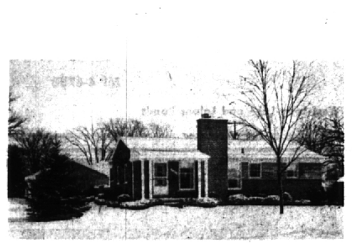
"HIGH ON A HILL"—IN BLOOMFIELD NEAR CRANBROOK. Tremendous studio-living room. Large family room PLUS paneled recreation room. Five bedrooms, four bathrooms plus two lavs. Superbly constructed. Beautiful terrace for outdoor living and entertaining. \$79,500.

Weir, Manuel & Snyder, Inc.

298 South Woodward Birmingham, Michigan Realtors
 Phone: Birmingham 644-6300 From Detroit 566-2323



HAPPY HOME—ALL YEAR AROUND. Excellent paneled recreation room in BASEMENT, with bar and fireplace. 20 foot jalousied porch. Three bedrooms and carpeting. \$31,900.



SEE THIS HOME BEFORE IT'S SOMEONE ELSE'S — Tops in maintenance and value. Three bedrooms, 2 1/2 baths, recreation room in basement. Screened porch, huge garage and carpeting.