

Calendar of Cultural Events

BIRMINGHAM THEATER—"Barabas" starring Anthony Quinn, Arthur Kennedy, Jack Palance and Ernest Borgnine.

LITTLE GALLERY—Exhibition of figure drawings by Clifford West and watercolors and oils by Berlin artist Georg-Wilhelm Borsche at the Little Gallery, 915 E. Maple, Birmingham. Hours are 9 a.m. to 6 p.m. except Sundays and Mondays.

VILLAGE WOMAN'S CLUB—Fifth of eight MSUO "History in the Making" lectures at the Village Woman's Club from 9:30 to 11:15 a.m. Dr. Harm de Blij of Michigan State University will be the speaker.

BRIDGE—Birmingham Duplicate at the YMCA, 400 E. Lincoln, Birmingham at 7:45 p.m. Open to the public.

Feb. 8

ST. DUNSTAN—Opening night of "Thunder Rock" presented by the St. Dunstan Guild at their playhouse on Lone Pine Road in Bloomfield Hills at 9 p.m.

INTERNATIONAL FESTIVAL—Student-sponsored festival, "Culture Internationale," on the MSUO campus in the afternoon and evening. Open to the public.

Feb. 9

ST. DUNSTAN'S—The St. Dunstan Guild will present "Thunder Rock," at their playhouse on Lone Pine Road in Bloomfield Hills at 9 p.m.

CRANBROOK GALLERY—Opening of two exhibits, "Photography in the Fine Arts" and "Design Investigations," at the Cranbrook Galleries. The show will run through March 3. Hours are 2 to 5 p.m. daily except Monday.

Feb. 10

BIRMINGHAM ART CENTER—Opening of graphics show featuring drawings, etchings and lithographs, at the Birmingham Art Center, 1516 S. Cranbrook Road. The exhibition will run through March 3. Hours are 2 to 5 p.m. except Monday.

BALLET—Monthly seminar of the Children's Ballet Theatre, Inc., Guest artist Ruth Pryor will direct.

Feb. 11

KINGSWOOD SCHOOL ART GALLERY—Etchings, woodcuts and lithographs done by students from the Cranbrook Academy of Arts graphics department on exhibition in the Kingswood School-Cranbrook art gallery. The show will run through Feb. 22. Hours are 4:15 to 5:45 p.m. Monday through Friday.

BRIDGE—Duplicate Bridge at the Birmingham Community House, beginning at 7:45 p.m. Open to the public.

Feb. 12

CRANBROOK INSTITUTE OF SCIENCE—Opening of exhibit, "Charles Darwin: the Evolutionist." Will run through March 17. Hours are 2 to 5 p.m. daily, except Monday.

CONVERSATIONS IN THE ARTS—"The Elements of Art" will be discussed by Don Willett and Nita Schwartz at 10 a.m. at the Baldwin Public Library. First of eight weekly sessions.

BRIDGE—Tuesday Birmingham Duplicate at 2424 Manchester, Birmingham, beginning at 1 p.m. Open to the public.

Feb. 13

TRAVELOG—"The Southfield Dept. of Parks and Recreation will present Ben Carlin showing his film "Around the World by Sea-going Jeep," at the Southfield High School at 8:15 p.m.

CONVERSATIONS IN THE ARTS—"New Dimensions in Fiction" will be discussed by Jay McCormick, Jochim Ries and Richard Werry—all of Wayne State University—at the library at 10 a.m. First of eight weekly sessions.

BRIDGE—Birmingham-Bloomfield Area Bridge Club at the YMCA, 400 E. Lincoln, Birmingham, beginning at 7:45 p.m. Open to the public.

Feb. 14

BIRMINGHAM MUSICALS—February meeting of the Birmingham Musicals at the Community House will feature duo-pianists. Program begins at 1:30 p.m. Members and their guests only.

VILLAGE WOMAN'S CLUB—Sixth of eight MSUO "History in the Making" lectures at the Village Woman's Club, E. Long Lake Road, Bloomfield Hills, from 9:30 to 11:15 a.m. Speaker will be Harm de Blij of MSU.

BRIDGE—Birmingham Duplicate at the YMCA, 400 E. Lincoln, Birmingham, beginning at 7:45 p.m. Open to the public.

Feb. 15

TRAVELOG—Clifford J. Kamen presents film "Holiday in Mexico" at the Community House at 8 p.m. Tickets available at the door.

ST. DUNSTAN'S—The St. Dunstan Guild will present "Thunder Rock" at their playhouse on Lone Pine Road in Bloomfield Hills at 9 p.m.

CONVERSATIONS IN THE ARTS—John Fraser Mills of Wayne State University and John Galloway of MSUO will discuss "Roots of Modern Art" at MSUO at 2 p.m. First of eight weekly sessions.

Feb. 16

TRAVELOG—Clifford J. Kamen presents film "Holiday in Mexico" at the Community House at 8 p.m. Tickets available at the door.

B'WANA DON—B'wana Don show at the Community House at 1:30 p.m.

Feb. 17

KIRK-IN-THE-HILLS—"The Mass in B Minor" (Part 1) by J. S. Bach will be performed at Kirk-in-the-Hills at 4 p.m. by the Kirk choir, soloists, orchestra and organ.

Feb. 18

LECTURE—Second lecture in a series on "Early American Antiques" at the Village Woman's Club at 1:30 p.m. Speaker will be James Keene.

BRIDGE—Duplicate Bridge at the Birmingham Community House at 7:45 p.m. Open to the public.

Feb. 19

TRAVELOG—Robert Davis presents film "Texas" at the Bloomfield Hills High School beginning at 8 p.m. Sponsored by the Bloomfield Hills Lions Club.

BRIDGE—Tuesday Birmingham Duplicate at 2424 Manchester, Birmingham, beginning at 1 p.m. Open to the public.

Feb. 20

BRIDGE—The Birmingham-Bloomfield Area Bridge Club will meet at the YMCA, 400 E. Lincoln, Birmingham, at 7:45 p.m. Open to the public.

VILLAGE WOMAN'S CLUB—Seventh of eight MSUO "History in the Making" lectures at the Village Woman's Club, E. Long Lake Road, Bloomfield Hills from 9:30 to 11:15 a.m. Speaker will be Dr. Roger F. Hackett of University of Michigan. Open to the public.

BRIDGE—Birmingham Duplicate at the Birmingham YMCA, 400 E. Lincoln, beginning at 7:45 p.m.

TOWN HALL—Beverly Nichols, author of several books on gardening, will speak on "Laughter in an English Garden" at 11 a.m. in the Birmingham Theater.

BEAUTIFUL ESTATE—3 ACRES—in Bloomfield Hills

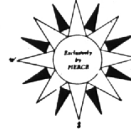


A home with the larger rooms you are seeking.
 5 bedrooms, 3 with fireplaces
 Living Room with fireplace
 Separate Dining Room
 Library
 Large breakfast nook
 Patio with fireplace
 carpeting and draperies

\$49,500.00

TODAY IT'S A BI-LEVEL with a commanding hilltop view

- Bloomfield Hills Schools
- 3 bedrooms with 2 baths
- 2 fireplaces, Living room and Family room
- Breakfast nook 8 x 8
- Kitchen 17 x 12 (built-ins)
- Lovely large living room with view



FRED PIERCE INC.
 460 NORTH WOODWARD, BIRMINGHAM, MICH.
 Midwest 7-1414

Hepatitis Declines In Oakland County

Infectious hepatitis, a disease of the liver, dropped 30 per cent in Oakland County last year, according to figures just released by the Oakland County Department of Health.

There were 251 cases reported to the Health Department in 1962, compared to a record high of 360 cases in 1961.

Earlier this year public health officials predicted that the disease would follow its normal cyclical pattern and fall below last year's number of cases. Infectious hepatitis reaches a peak about every six or seven years.

"While the decline in 1962 is encouraging," cautioned Dr. John D. Monroe, health director, "we must strive to improve our sanitation standards. No one can be sure that this encouraging trend will continue."

THE DISEASE, which is a virus, is spread by contaminated hands, dishes, food, clothing, towels and shoes.

Dr. Monroe says that our best hope of combating hepatitis is to scrupulously wash our hands.

"This disease is not dangerous in the sense that it causes many

deaths," said Dr. Monroe, "but it is a serious menace, especially to adults in the 20 to 39 age group. These people may take six to eight weeks to recover."

FORTUNATELY THE DISEASE is less severe in children. Like some other diseases, a person may be infected by this virus yet have no obvious signs of illness.

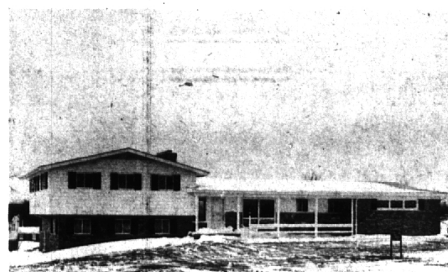
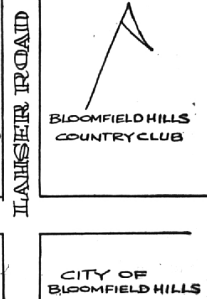
Some experts believe that approximately 70 per cent of the cases, especially in children, go unrecognized, he continued.

Areas of high incidence in Oakland County were Pontiac City—36, Waterford Township—22, Royal Oak—21, Farmington Township—18, Independence Township—15, Commerce Township—11, West Bloomfield—11 and Avon—10.

STILL MEADOW

Carriage Trade Homes
 Gracious Country Living

LONG LAKE ROAD



- Large rolling sites — winding roads.
- Excellent established homes with fine lawns and trees and shrubs.
- Architectural control — to protect you.
- Sewer and gas lines are in.
- Bloomfield Hills Schools and address.
- Secluded Country atmosphere BUT less than a mile to either Telegraph or Woodward for quick trips to town.
- Within a short radius of Country Clubs, Lakes, Cultural facilities, Churches, Schools, and all the shopping available in Birmingham and Detroit.

QUALITY BUILT—4-BEDROOM Tri-Level on high sloping site. Large Living room with beamed studio ceiling and raised hearth and Dining room and Porch on upper level have wonderful view—Beautiful lower-level Family room with parquet floor, walnut paneling and fireplace of stone and walnut opens to future Patio. Master Bedroom has dressing room and private bath. 2 other full Baths. Lovely Frigidaire Kitchen and Breakfast complete with everything. Priced well for prime area. OPEN FRIDAY, SATURDAY and SUNDAY — Drive out and see!!

30 Years
 of
 Integrity
 and
 Service

SNYDER KINNEY & BENNETT INC. Realtors

239 S. Woodward, Birmingham MI 4-7000
 32740 Franklin, Franklin MA 6-9600

A Highly Qualified
 Staff
 with Experience
 and Reputation

THE "LOOK AGAIN"

Look!

You'll come back - and back again -

to *Overbrook**

MAX BROOCK INC.
 MI 4-6700

*West Long Lake and Lahser Roads



NEAT AND CONVENIENT—Set at the end of a traffic-free court street, this appealing Colonial Ranch has been superbly maintained. Activities center around a fireplace in the paneled family room; there are 3 cheerful bedrooms and 2 tastefully tiled baths. A spacious 19 foot farm kitchen and large utility room make this an UNUSUAL VALUE AT \$24,850.

OPEN 'TIL 8 P.M.

Showcase of homes
 HALL & YOUNG INC. REALTORS

BIRMINGHAM
 345 S. Woodward
 MI 6-7900

BLOOMFIELD
 4114 W. Maple
 MA 6-5900