

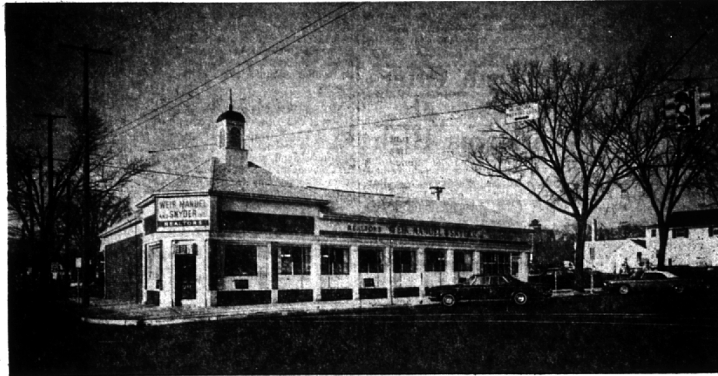
HAPPY NEW YEAR

Our business growth has made necessary extensive property improvements to our office building at 298 So. Woodward, Birmingham, 48011. We gratefully acknowledge the highly professional assistance of:

Architect	EDWARD BISSELL A.I.A.
Bildor	JAMES K. BAIN
Interior Designer	RICHARD R. MOORE N.S.I.D.
Parking Lot Engineer	WILLIAM LIND

HEALTHY NEW YEAR

RALPH MANUEL  
M. E. (SHORTY) SNYDER  
RICHARD M. WEIR  
RUDOLPH F. RANKE



GLADYS J. COLBY  
MARY JANE CONNELLY  
LYMAN (ROCKY) CRAIG  
ROBERT CRAIG  
JOHN D. DUNN  
OLA M. DUNN  
BETTY GILLESPIE  
EDMUND T. LAWSON  
JOHN D. MAYNARD  
ROBERT L. MOORE  
RAY H. MURRAY, JR.  
FORREST N. REED  
L. GERALD ROBINSON  
MARJORIE S. RUSSEL  
IRENE THOMPSON TJAARDA  
DOROTHY B. VINTON  
HARRY C. WALSH  
LOU WHIRL



We Wish You A Happy, Healthy, Prosperous New Year

—From All Of Us At

**Weir, Manuel & Snyder, Inc.**

298 South Woodward  
Birmingham, Michigan Realtors

Birmingham 644-6300  
Phones: From Detroit 566-2323

LEONA HROCH  
VIRGINIA GUENTHER  
EUNICE HEWITT  
MARIAN HOHMAN  
ALICE STENTZ

LARGE FAMILIES NEED LARGE HOMES  
WE HAVE THEM—WE SELL THEM

**BLOOMFIELD HILLS ESTATE**—Two acres in the woods. 8 bedrooms (first floor master) • 4 baths • 2 lavs • Dining room • Library • Florida room • Separate Gate House • Extensively renovated with de luxe kitchen \$67,500.

**NEW MODERN BI-LEVEL**—Near Bloomfield Hills Country Club • 5 large bedrooms • 3 baths • Lav • Great family kitchen • Paneled activity room • 3 fireplaces • Sloped and beamed ceilings • Much brick, slate and glass • Ready to move in! \$74,000.

**BLOOMFIELD HILLS COUNTRY CLUB**—fairways to the north • 5 bedrooms (two on first floor) • 2 baths • 2 lavs • Dining room • Paneled family room • 3 fireplaces • Rolling two acres enjoys loveliest vistas.

**BLOOMFIELD VILLAGE** — French provincial with 5 bedrooms that are really BIG. 4 baths • Lav • Dining room • Family room • Recreation room • Glassed porch • Great closets and storage space • Superb condition, A pleasure to show. \$62,500.



BLOOMFIELD HILLS EXECUTIVE MANSION

Near Christ Church Cranbrook on four acres. Seven bedrooms (master suite has fireplace and two dressing rooms), seven bathrooms and two lavs. Dining room, library and huge family room with fireplace, refreshment bar and refrigerator. Paneled recreation room with fireplace. NEW ultra-deluxe kitchen. Terrific maids' quarters. Many, many extra features. You have to see it — it's a show place!

**NEW BLOOMFIELD HILLS COLONIAL** — On two acres. 5 bedroom (29' master suite with sitting and dressing room) • 3 baths • Powder room • Dining room • Large family room with fireplace • 500 feet of creek. Many trees \$69,500.

**NEAR CRANBROOK** — This distinguished Estate offers 9 bedrooms • 8 baths • Separate dining room • Library • Recreation room • Mud room • NEW modern kitchen with butler's pantry • maids' quarters • Guest House • Everything you could ever want.

**BLOOMFIELD HILLS**—Colonial ranch on beautiful grounds 5 bedrooms • 3 baths • Lav • Dining room • Paneled library • Family room with beamed ceiling. Recreation room with bar • Greenhouse • Washer • Dryer • Hi-Fi • Best of everything. \$87,500.

**BLOOMFIELD VILLAGE** — In the trees • 5 bedrooms 3 bathrooms • Lav • Dining room • Library • Recreation room • New kitchen • Fire alarm system. Two blocks to Quarton school • Transfer makes it available. \$42,800

**Weir, Manuel & Snyder, Inc.**

298 South Woodward  
Birmingham, Michigan Realtors

Birmingham 644-6300  
Phones: From Detroit 566-2323