

## Republicans Elect Flint Committeeman

Robert H. Flint, of Bloomfield Hills, has been elected to the Republican State Central Committee. Flint, vice president and treasurer of the Flint Ink Corp., replaces James Dickerson who has resigned. Dickerson is a primary candidate for the 19th Congressional District. Flint has been active in the Republican Party since 1952, when he became township director for West Bloomfield and also helped organize their first Republican Club. In addition, Flint was the first elected precinct delegate for the area. He has also been an associate member of the Oakland County Executive Committee.

Since 1960, Flint has been Township Director responsible for Bloomfield Township and Bloomfield Hills. Flint, his wife and daughter make their home at 1577 Island Lane, Bloomfield Hills.

This is what I want Santa. I want a drum and I want a clunky monkey, and I want a school bag and a xylophone, a jack-in-the-box. I would like a tammy doll. I would like a game of mousetrap.

## Census To Reveal U.S. Farm Problems

Two area residents will be among census takers determining the size of the nation's farm labor force during the week of Dec. 15 in Wayne, Oakland and Macomb counties. They are Carol Burry, 21790 Independence, Southfield; and Mary Heck, 30546 Birchway Drive, Franklin.

Answers given in this survey, being taken in 357 selected areas in the United States, will help the government in determining farm labor needs and in studying the special economic and social problems of migratory workers and other farm employees.

## Local Girl Joins Navy Nurse Corps

Patricia Ann Hildebrand, daughter of Mr. and Mrs. John Hildebrand, of Franklin, was among eight seniors at the College of Mount St. Joseph who were sworn in as ensigns in the Navy nursing program.

Miss Hildebrand will report to the Newport, R. I. officers training camp after graduation in June to spend eight weeks training for active duty in one of several United States Navy hospitals.

## Safety Is Urged For the Youthful Farm Workers

"You can take safety with you," is the message the U. S. Department of Labor is trying to get across to the more than one million youngsters under 18 who "hire out" for all kinds of jobs on farms every year. The work experience is fine, but some jobs can be dangerous, the Department cautions in a leaflet described as a pocketful of safety tips.

With frustrating persistence, accidental death rates in agriculture continue to rank third among major industries—over 3,000 people are killed and nearly 300,000 are disabled in farm work each year.

New and different machines and farming methods can be particularly hazardous for inexperienced youths whose immaturity in judgment only increases the chance of work accidents.

"GOING TO DO Farmwork?" "Take safety along" is the title of the new leaflet, especially suited for handout during job registration or at farmwork sites. It gives a series of commonsense "do's and don'ts" to safeguard the youngsters engaged in variety of farm tasks—working around machines and animals, using handtools and ladders, and performing the hundred and one jobs that involve lifting everything from boxes or bags to pails or pitchforks.

The importance of proper clothing to protect youngsters from sun, insects, poisonous weeds and chemicals, are tips offered along with friendly advice on the need to get plenty of rest and nourishment to provide the energy needed to prevent accidents and increase production on farm jobs.

Copies of the leaflet are available in limited numbers, without charge, as long as the supply lasts. Address requests to: U.S. Department of Labor, Bureau of Labor Standards, Washington, D. C. 20201.

## Carnegie Tech Spokesman Here Today

The admission requirements and educational opportunities at Carnegie Institute of Technology, Pittsburgh, Pa., will be described to students at Wylie E. Groves and Seaborn high schools in Birmingham today by John W. LeRoy, assistant director of admissions counseling.

LeRoy will discuss undergraduate programs in the college of engineering and science, the college of fine arts, and the Margaret Morrison Carnegie College for women.

The school offers graduate study in industrial administration, engineering and science, fine arts, psychology, bacteriology, home economics education; and a graduate program in English, history, the natural sciences, and mathematics for secondary school teaching.

## Urge 1-Vote Approval Of Community College

A trio of lawyers last week urged that Oakland County voters be asked to vote on a community college, tax support for it and college tax support for it. Eugene Kutby, chairman of the finance section of the CCCC, reviewed a 1962 study indicating a community college could be built and financed by a one-mill tax. Burton R. Shifman told the Community College Citizens Committee (CCCC) that if propositions are submitted separately, two years could elapse before a tax could be

right to seek voter approval of bonds to build classrooms.

THE NEXT meeting of the CCCC is set for 8 p.m., Jan. 8 at the Oakland Schools office, County Service Center, Pontiac.

Chairman Wendell Brown stressed that the only qualification for membership in the CCCC is interest in the community college issue. Representation is sought from every school district and governmental unit in the proposed community college district.

## MSU Labor Expert Serving With ILO

Dr. Jack Stieber, director of Michigan State University's School of Labor and Industrial Relations, is participating in an effort by the International Labor Organization to further the understanding of world labor problems.

He is teaching students throughout the world about wages and economic development. He is on a year's leave of absence from MSU to serve as a research consultant at the ILO's International Institute for Labor Studies at Geneva, Switzerland.

Start (or continue) her charm bracelet, this Christmas. A wide selection of karat gold charms is available to convey a special message, tells a "life story" or commemorate important events.

# Open Every Night 'til Christmas

# GIFTS, GIFTS, and more GIFTS for CHRISTMAS

FOR THE ENTIRE FAMILY  
Use A Lion Charge With Option Terms  
All Items Gift Boxed Free



## Ladies' Estron Quilt Robes

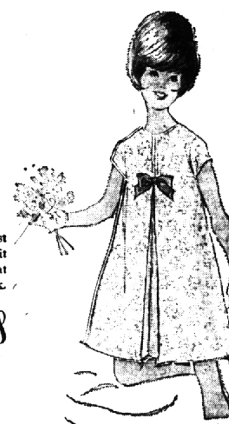
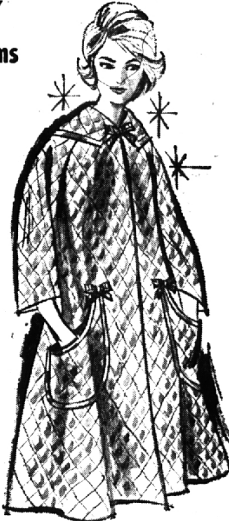
Duster length or long, they're light in weight but warm as toast. Prints or solids.

\$1198 to \$1498

## Ladies' Mohair Sweaters

Choose from hundreds of Cardigans or Pullovers in lush pastel shades or white. Plain or embroidered styles.

\$1298 to \$1798



## Keep Her in Youngland For the Holidays

Flowering Brocade in the latest skimmer silhouette. The charm of it all — that pettish bow, deep pleat front. 100% cotton in blue or pink.

Sizes 3-6X \$798 Sizes 7-12 \$898



## Boys' Melton Dress Suburban

All wool melton, with a Mouton shawl collar and fully pile lined. Choice of black or camel. Sizes 12 to 20.

\$2995

A. Alpine inspired styling with smart crew neck. 100% Orlon. \$1395

B. Crew neck slip-up cardigan in bold stripes. 100% wool. By Jantzen. \$1695

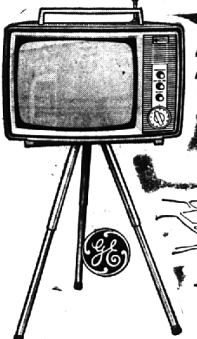
C. Wool and Mohair cardigan, high button front, elbow patches. By Puritan. \$1500

D. Shetland and wool cardigan, slip front, suede elbow patches. By Puritan. \$1595

## IMMEDIATE DELIVERY

G.E. 11" PERSONAL PORTABLE TV

PRICES START AT LESS THAN \$100.00



WE HAVE ALL 8 STYLES & FINISHES

"Only 12 pounds light"

America's own lightweight portable!

**Hawthorne** ELECTRICAL COMPANY  
GENERAL ELECTRIC SALES CENTER

375 Hamilton  
Birmingham  
Midwest 4-2200

Open Every Evening Until Christmas

2 Extra Shopping Hours—Friday 9 to 11 P.M.!