

State Colleges Rated High

Michigan State University, the State University of Michigan and Wayne State University are again listed as three of the nation's largest universities in the 44th annual analysis of enrollments by the University of Cincinnati.

Michigan State, which was ninth nationally last year in full-time students with 23,005 enrolled, is now eighth with 25,170.

Michigan increased in full-time enrollment from 21,691 to 22,058 and remains in 11th place. Wayne State, which was not listed among the top 30 last year in full-time enrollment, is 29th this year with 12,154.

IN GRAND TOTAL enrollment, MSU moved from 12th in the nation with 29,826 students to 10th with 31,538.

Although the U of M grand total increased from 30,152 to enrollment from 30,799 in this category, it went from 10th to 12th place, nationally.



GUEST CONDUCTOR Dr. Walter Collins directs a rehearsal for the annual Christmas Concert Saturday at Bloomfield Hills High School. Dr. Collins is associate professor and chairman of the music department at Oakland University.

Mixed Choirs Will Sing At Bloomfield Hills High

The mixed choir of Bloomfield Hills High School, under the direction of Clarence A. Luchtmann, will present its annual Christmas Concert to the public at 8:15 p.m. Saturday in the gymnasium.

The choir is the combined efforts of four classes and special groups.

Topic for the concert is "The Spirit of Christmas."

Featured will be both spiritual and traditional songs of the Christmas season and varied music on the school's new organ.

The program of Christmas music will be highlighted by the Jills: Carol Fullerton, Julie Rute, Linda Fegly, Chris Jaynes, Carol Damon, Joan Atkin, Connie Booth, Candy Hershberger and Carol Sarnes.

Pupils Participate In Chess Tourney

Participants from Seaholm High School, Birmingham, and Bloomfield Hills High School played in a chess tournament Nov. 28 at Oakland University, Rochester.

From Seaholm were Tom Bloor, Jim Johnson and Harold Ried. The BHHS students were Ed Kussy, Phil Gaubis, Bob Cook, Steve Earl and Bob Fink.

If you are a discriminating shopper, you'll find it pays to read the classified pages of The Eccentric today and every week. Read and advertise in the Classified pages. Call MI 4-1100.

BAA

(Continued from 1-D)

legendary birthplace of Apollo and Artemis. There will be short sail to Mykonos, the Capri of the Aegean, and the group will leave at midnight for Athens.

THEN THEY will go by jet to Rome and Florence. Sightseeing in Florence will include the Medici Chapel—Duomo, Dante's House, Pitti Palace and galleries.

There will be a visit to Uffizi Gallery, School of Moscos, Michelangelo's David; an excursion to Pesole, ancient Etruscan capital; and a visit to a private gallery.

FROM FLORENCE and Milan, the group will go by train and plane to Zurich. Stops are Zurich, Baden, Baden, Heidelberg, Wiesbaden. They go by private motorcoach via the Black Forest to Wiesbaden.

FROM WIESBADEN by Rhine steamer and train, the travelers will visit Coblenze and Amsterdam. In Amsterdam sightseeing will include the Ryks Museum, a diamond-cutting factory and a tour of the city along the canals of Amsterdam.

There will be an excursion to Volendam and Marken, with a visit to a cheese factory and to the island of Marken where the people still wear colorful costumes.

From Amsterdam by jet to New York and by jet to Detroit will conclude the trip.

THE SPECIAL ensemble: Mary E. Bunt, Polly Tompkins, Sara Petersen, Rica Hyde, Kim Keiss, Nancy Walton, Janet Oros, Lynn Amalfitano, Jeff Keith, Bill Pinkerman, Bill Hargartz, John McKenzie, Mitch Oakley, Dave Case, John Osborn and Jeff DeBandt.

The Junior-ettes: Nancy Patton, Pam Whipple, Louann Douglas, Sue Wiant, Cindy Daines, Jennifer Jones, Linda Applequist and Gloria Martins.

And the Soph Singers: Debbie Rogers, Lynn Skinner, Nancy Lewis, Ann Hagaman, Linda Curry, Karen Hinds, Diana Dring and Cheryl Marsh.

Dr. Walter Collins, associate professor and chairman of the music department at Oakland University, will direct the choir in several selections from the "Messiah."

DR. COLLINS is a graduate of Yale University and joined the faculty at Oakland in August, 1960. Prior to that period he was associated with the University of Minnesota and directed the University Chorus and University Chamber Singers.

In the spring of 1963, he was honored when his musical scholarship was demonstrated at the royal wedding of Princess Alexandria in Westminster Abbey, which was



Georgetown Green
BIRMINGHAM

- SHOPPING
- SCHOOLS
- ADDRESS

• 4 Bedrooms, 2½ Baths
at \$29,990

Including Base (100'x160') Lot
Located on 13 Mile, west of Lahser
Open Daily: 11 A.M. to 8 P.M. MI 4-0106

WM. J. PULTE INC.
MASTER BUILDERS
BIRMINGHAM-BLOOMFIELD
FULTE-BUILT-MEANS-BETTER-BUILT

LOSING VALUE

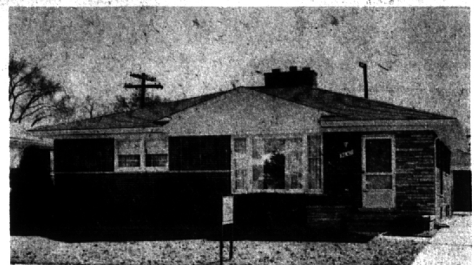
..... in your home?

Look now at *Overbrook**

MAX BROOCK INC.
MI 4-6700

*West Long Lake and Lahser Roads

CONVENIENT LOCATIONS



YORBA LINDA Very well-built Brick Ranch with FULL BASEMENT. Good-sized living room with fireplace. Dining ell. 3 Bedrooms, 1½ Baths. Large Screened Porch. 2½-Car Garage. Basement completely tiled and painted.

Carpeting and Draperies. Completely fenced yard. EVERYTHING IS IMMACULATE and in perfect condition.

Located on a paved street within easy distance to Schools, Shopping, Detroit bus and Churches. Priced well at \$23,750.



BIRWOOD A charming smaller home IDEAL FOR A young, starting family or a retired couple.

ALSO on a paved street close to Schools, Churches, Bus and shopping. Living room with fireplace. Dining space off Kitchen. 2 nice Bedrooms. Carpeting. Draperies. Pull-down stairs to attic storage. Attached Garage. Fenced yard. Fireplace screen. APPLIANCES MAY BE PURCHASED. CAN BE PURCHASED WITH VERY LOW DOWN PAYMENT BY ASSUMING MORTGAGE. Priced at \$15,900.

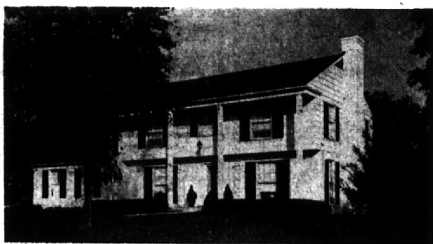


SNYDER KINNEY & BENNETT
INC.
Realtors

MI 4-7000 MA 6-9600
239 S. Woodward, Birmingham 32740 Franklin, Franklin



YOUR CHILDREN can walk to Adams and Derby schools. Four bedrooms and 2½ baths. Family room with fireplace, separate dining room and great kitchen with built-in oven and range. Aluminum screened porch. Carpets and draperies. REAL BUY at \$34,900.



THE OWNERS HAVE BEEN TRANSFERRED so here is your chance! Better than new—in BLOOMFIELD VILLAGE. Four bedrooms, 2½ baths, separate dining room and library. Fully equipped ultra kitchen with double width center section and butler's pantry. ONE OF A KIND!



IMAGINE! Four bedrooms, separate dining room and family room, plus all tacked down carpeting and draperies for \$16,900. Walk to school and town. Good opportunity, better see it!

Weir, Manuel & Snyder, Inc.

298 South Woodward Birmingham, Michigan Realtors Birmingham 644-6300 Phones: From Detroit 566-2323