

The Birmingham Eccentric classified ads get quick results because they're set in easy-to-read type and reach over 70% of the Birmingham-Bloomfield area. Place a Want Ad yourself in the Eccentric's busy Classified Supermarket. Dial Midwest 4-1100 for fast results.

Why not consider for investment . . .

THE  
**PUTNAM  
INCOME**  
FUND

Emphasizing Current Income

Mail coupon below for Free Prospectus.

**FIRST OF MICHIGAN CORPORATION**  
Members New York Stock Exchange

Wabek Building Phone: 647-1400  
Birmingham, Mich.

Please send Free Prospectus of The Putnam Income Fund.

Name \_\_\_\_\_  
Address \_\_\_\_\_



**Open for—Credit**

The Retail Merchants Division of the Birmingham Chamber of Commerce set up its mobile office at Maple and Henrietta Monday morning. The office will house credit bureau, information center and gift wrapping service for holiday shoppers. On hand for the occasion were (from left) Marianne Barnett, Bill Wizner, Bruce MacDonald and George McGlimen. The trailer was furnished by MacDonald.

The Birmingham Eccentric classified ads get quick results because they're set in easy-to-read type and reach over 70% of the Birmingham-Bloomfield area. Place a Want Ad yourself in the Eccentric's busy Classified Supermarket. Dial Midwest 4-1100 for fast results.

**Hills Slates Hearing  
On Zoning Ordinance**

A tentative date of Jan. 15 has been set for a public hearing on Bloomfield Hills' proposed zoning ordinance.

The availability of the Cranbrook gymnasium on that night will determine if the public hearing is to be held at that time.

Several copies of the ordinance, along with maps, will be available to the public at city offices 15 days prior to the hearing, according to Clerk Robert Stadler.

A letter will also be mailed to all residents explaining proposed changes in the ordinance, Stadler said.

TWO AREAS of controversy remain—the height of buildings in multiple dwelling districts (proposed change from a limit of two to three stories) and reduction of lot sizes in single dwelling districts.

Under law, a public hearing must be held before a zoning ordinance is adopted.

About 16 persons, residents of the city and Bloomfield Township, attended Monday night's commission meeting to discuss the possible conversion of Opdyke Road into a one-way street north.

Commissioners are concerned about the large volume of traffic on Opdyke and feel it is bound to increase with the opening of the Chrysler Freeway at the end of December.

Many children have to cross the thoroughfare on the way to St. Hugo of the Hills School, located in Bloomfield Hills at Opdyke and Hickory Grove.

TOWNSHIP RESIDENTS objected to making Opdyke a one-way

street because it would be an "inconvenience" in getting their children to the school.

The commission instructed City Clerk Robert Stadler to contact the Oakland County Road Commission and state highway department and request a ban on left turns onto Opdyke from Square Lake and right turns onto Square Lake from northbound Opdyke.

This, the commission felt, might serve the same purpose as making Opdyke a one-way street north, in that it would discourage Chrysler Freeway traffic from using Opdyke as a short cut to Woodward.

THE COMMISSION also heard a complaint from residents of Vaughan Road that traffic volume has increased since the street was resurfaced last summer.

Motorists are using the road as a short cut between Long Lake and Lahser and hot-rodgers are making it a late-at-night dragstrip, they charged.

**Leaders**

(Continued from 3-A)

representatives of nearly all of the organizations in the area to bring together the many diverse interests, abilities and facilities.

"THIS RESERVOIR of experience and talent, if properly utilized, should present the community with its greatest opportunity for self-determination in preserving the values of the past, enjoying a meaningful present and designing an orderly transition into the future," Thom said.

He said the CAC concept was not new and in the group's two years of exploratory development, the experiences of many other such organizations had been reviewed.

"The CAC is not by predilection for or against anything," Thom said, "but rather hopes by preparing studies in depth on a broad spectrum of community issues to let the facts speak for themselves."

At the present time the CAC is working on a plan to improve and beautify Birmingham's municipal parking lots.

"WITH ITS heterogeneous composition plus its willingness to probe as far afield as necessary for expert information in preparing its studies in depth, the CAC will always be working from a broad basis of qualified data," he said.

Any projects undertaken by the CAC, Thom said, would be studied in depth and at no time will an attempt be made to "slant or prejudice the data."

All presentations, he said, would be made by various subcommittees to the CAC-at-large and group reactions recorded and filed.

"Presentations will then be made to the community or to the specific agency for which it was prepared," Thom said.

ANOTHER OF the CAC's founders, F. Ward Ouradnik, administrative director of The Birmingham Eccentric, outlined the group's structural organization.

"The CAC is an autonomous group and has no official sanction from the City of Birmingham," Ouradnik said.

The CAC board of directors is made up of 18 people from various organizations in the community.

The board in turn is broken up into a five-member executive committee.

Ouradnik said there are no regularly scheduled meetings of the membership-at-large, but they are called whenever the need arises.

Minutes of each of the board meetings are available to all members, he said.

*Fine Furniture*  
**GIFTS TO BE TREASURED**  
Can Be Yours For Christmas

2 Floors of Early American Furniture

Open Evenings Until Christmas

**Smith's**  
Early American Furniture  
Established 1945  
128 South Woodward MI 4-3202

**Kingsley Inn**  
MI 4-1400 JO 4-5916

We Are Making Some Wonderful Plans For A Very FESTIVE AND GAY NEW YEAR'S EVE CELEBRATION.

OUR OPEN HOUSE INVITATION IS CORDIALLY EXTENDED TO YOU.

The Regular Dinner Menu Will Be Served From 5 P.M. to 8 P.M. THE NEW YEARS EVE FESTIVITIES WILL COMMENCE AFTER 9 P.M.

A Full Course Gourmet Dinner Will Be Served . . . \$7.50 per person

SPECIAL ENTERTAINMENT DANCING FAVORS

— NO COVER CHARGE —  
May We Suggest That You Make Your Reservations Early



**Very Unusual Gifts . . .**



**A Mirror . . .**

To reflect the beauty of your home and your loved ones. We have excellent buys.

**A Lamp . . .**

Unusual gift. Made from the original wallpaper rollers. No two alike . . . not found in too many stores.

We Regret We Cannot Accept A Drapery Order For Delivery By Christmas

**Birmingham Paint, Glass & Wallpaper Co.**

Free Parking In Rear  
335 East Maple, Between Woodward & Hunter MI 4-3737



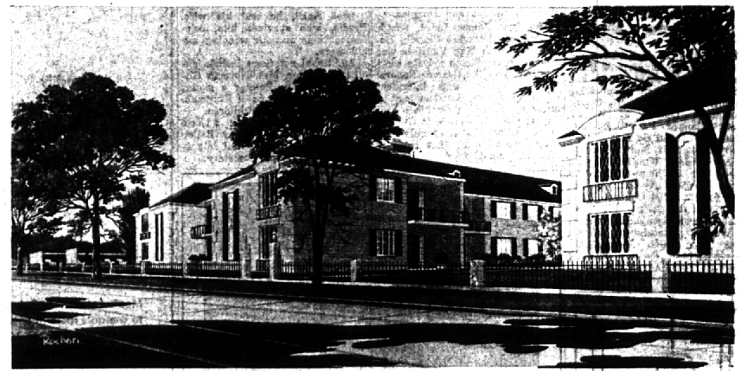
**We Dig Ludwig**

Pictured above are Mid-State FM network staff members saluting Ludwig van Beethoven on the occasion of his 193rd birthday, December 16.

WABX will add to this festive time by broadcasting 18 hours of the master's music on Sunday, December 15, 7 a.m. to 1 a.m. Included will be all 9 symphonies plus sonatas, trios, concertos, an opera, quartets, and a mass.

You Are Invited to the Party . . .

ON **WABX** **99.5 FM**



Birmingham's Newest, Most Exclusive Address

*Burlington Arms*  
apartments

1111 NORTH WOODWARD, BIRMINGHAM

If you're looking for an apartment that's the ultimate in private estate-like luxury of living, Burlington Arms Apartments are your answer.

Come stroll along the heavily wooded, beautifully landscaped gaslighted walkways and courts. Visit the model apartments decorated

by Wallace J. Newton. Marvel at how fabulously spacious these new apartments are. 1, 2 and 3 bedroom apartments are now ready for occupancy, or an unfinished apartment can be completed to your "custom"

specifications. Models open daily from 11 a.m. to 5 p.m., Tuesdays and Thursdays until 8 p.m., and on Sundays from 2 p.m. to 5 p.m.



Burlington Arms Apartments feature all-electric built-in G.E. kitchens; each apartment has its private patio or balcony; all are air-conditioned, have huge rooms, built-in hi-fi; 2 baths, walk-in closets, dressing areas prevail; covered parking is nearby; every feature is superlative.

For Further Information, phone KE 5-6200,

or write Paul H. Johnson, Inc., 19600 West McNichols, for illustrated brochure