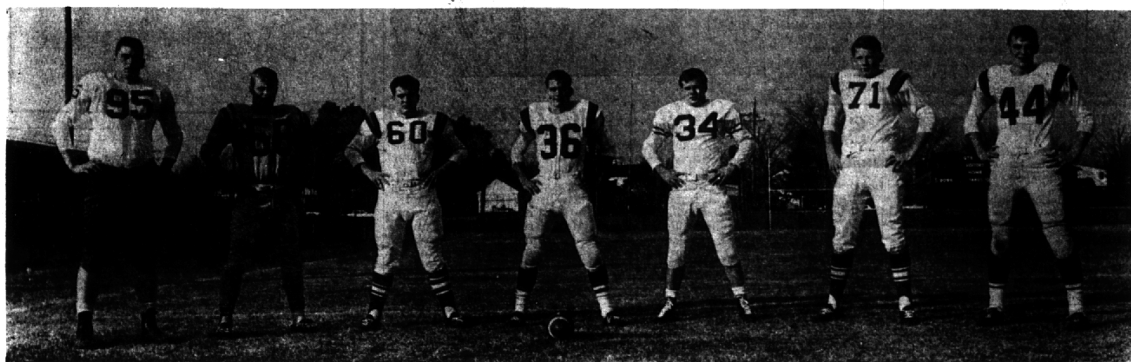


Eccentric's All-Star Eleven Has Power, Speed



Seaholm Ace Lone Repeater

By DICK ZEMMIN
Sports Editor

Playing football is no easy matter. Neither is picking an All-Star team. The latter can be a lot more frustrating.

But, the almost impossible job of selecting the eleven top players of the 1963 season has finally been completed and The Eccentric is proud to present its Area All-Star eleven.

Though slightly small in size for a prize team (the line averages 186, the backfield 181), we are certain these eleven football players could hold their own against any other squad.

The line consists of quick, fast and hard-hitting guards and

tackles with a strong center. Both ends are big, capable blockers with good speed and hands.

THE CENTER, guards and tackles are fast enough to pull and lead plays, and are strong enough to block holes in the line on defense.

The backfield includes a quick, fine-passing quarterback, two lightning-fast halfbacks and a big, powerful fullback capable of getting the needed yardage.

Looking at each player individually, a discerning football fan will find very few weaknesses. These eleven players contributed to team performance throughout the year with unequalled effort.

At end, West Bloomfield's Rick Hacht presents a formidable opponent. At six-foot, two and one-half, Hacht makes an easy target for a passer. He weighs 190 and is one of two juniors on the squad. He plays baseball and basketball and enjoys all sports.

Cranbrook tackle Larry Willey was a handy man on the Crane team this year. A senior, he played both ways, in the line and as a middle linebacker on defense. He also worked out as fullback and scored a touchdown in one league game. The five-foot, nine-inch, 188-pounder was a standout all year long. He also plays baseball and wrestles.

IT WAS A toss-up between Tom McKennie and Groves teammate Larry Judd at guard. Both played fine ball during the year, although McKennie sometimes stood out more. Only five-foot, eight-inches, he packs 166-pounds on a powerful frame. A junior, he enjoys swimming and fishing.

Center Craig Johnson is a senior at Seaholm and did a terrific job against players much bigger. Only 160 and five-foot, 10-inches tall, he

(See ACE, 2-E)

HACHT
W. Bloomfield

WILLEY
Cranbrook

McKENNIE
Groves

C. JOHNSON
Seaholm

EYNON
Bloomfield

P. JOHNSON
Groves

JACOBSON
Seaholm

Honorable Mention

It is an impossible task to try and limit the number of good football players in the area to those who appear on the two teams below.

For that reason, and in order to bring recognition to other players who have turned in fine performances throughout the year, The Eccentric has listed the following players for honorable mention.

Brother Rice—tackle Bob Gabriel (Sr.); halfback John Callihan (Sr.); quarterback Paul Jagers (Sr.); center Fred Schaden (Sr.); Country Day—guard Jeff Bisage (Sr.); quarterback Steve Serlin (Sr.); end Paul Sonda (Sr.);

BLOOMFIELD Hills—fullback Pete Vidar (Sr.); end Dave Robillard (Soph.); center Roger Wotila (Sr.)

Cranbrook—tackle Pete Maxwell (Sr.); guard Phil Maxwell (Jr.); end Buzz Miras (Jr.)

Seaholm—quarterback Dick Swaney (Jr.); halfback Brent Miller (Sr.); tackle Dick Rozek (Jr.); Groves—fullback Dave Kawewski (Sr.); defensive halfback Randy Fraser (Jr.); halfback Rob Vihbert (Sr.)

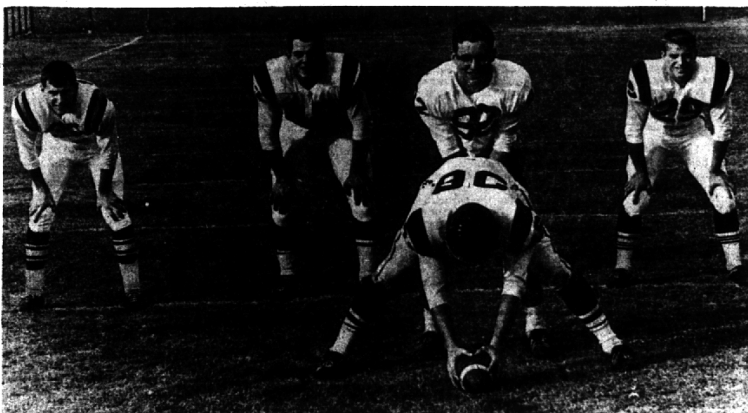
Southfield—tackle Kane Boshma (Jr.); end Rich Smiegelaki (Jr.); back Harry Glass (Sr.)

West Bloomfield—tackle Mike Starick (Sr.); guard John Shearlock (Sr.); halfback John Nemyer (Sr.)

Golfer Scores 2nd Ace at B'ham CC

It may be November, but golf is still in the news. Charles Grandner, of 1820 Riverside Drive, Beverly Hills, scored a hole-in-one recently on the 181-yard, number three hole at the Birmingham Country Club.

Grandner made the ace with a three-iron and carded a 32 for nine holes. It was the second hole-in-one he has made at the Birmingham course. His first one came in 1959 on the seventh hole.



PROCTOR
Groves

CONLEY
Seaholm

GREIG
W. Bloomfield

HEFT
Seaholm

Eynon, Heft Chosen '63 Prep Stars

Each year The Eccentric picks two athletes, to go along with their All-Area teams, as the top players during the season, in the opinion of the paper.

This year, guard Sandy Eynon of Bloomfield Hills and halfback Ken Heft of Seaholm have been selected as the top lineman and back of the 1963 campaign.

Eynon, a rugged senior, looks anything but a lineman at first sight. He is small, only five-foot seven-inches tall and 155 pounds. In fact, he is the smallest member of the All-Star team. He is quiet and wears glasses.

BUT, EYNON has proved that size doesn't mean anything. Throughout the season, he was the mainstay in the Baron line. Tough to block and hard to move, Eynon

was a bright spot in an otherwise dull season for Baron coach Don Hoff.

What he lacked in size, he made up for in range. Possessing good speed and pursuit, Eynon pulled all carriers down all over the field. He never had a bad ball game and was responsible for the majority of tackles made by the Baron line.

Heft, an amazingly fast and deceptive runner, led Seaholm in scoring, personally accounting for 12 touchdowns during the year.

His two scoring sprints ruined Groves' upset plans; his lone TD salvaged a tie with Hazel Park, and his four tallies carried Port Huron.

EQUALLY dangerous as a runner and pass receiver, Heft was also a standout on defense. His key interception against Kimball helped carry the Maples past the Knights.

Probably his biggest asset is a unique combination of speed and deception. Slashing off-tackle or

(See PREP STARS, 2-E)

Second Team Has Big Line, Quick Backs

The Eccentric's Second Team is one that would please any coach. Consisting of nine seniors and two juniors, this 11-player eleven includes some of the finest ball players in the area.

Ends Gerry Appleby of Bloomfield and Dan Van Mourik of Brother Rice provide any quarterback with two fine receivers. Appleby, though hobbled by an injury late in the year, still was the chief target of Baron quarterbacks. Van Mourik was rated the top player on the Rice squad this year by coach Joe Paszczuk.

RICK EYNDER of Seaholm was a defensive standout for the Maples and served as a pulling guard on offense. Tom Barlow of Cranbrook,

(See TEAM, 8-E)



SANDY EYNON
Ability makes up for size



KEN HEFT
Has great speed, deception

Kinnison 'Coach of Year'

High school football is unpredictable. Sometimes even more so than college or pro. The players are young and inexperienced and prone to err.

So, when a team has a successful season, especially on the heels of a poor one, the answer often times is the coach.

This is the case over at Groves High. Head coach Jim Kinnison brought the Falcons from the depths of the obscure to the heights of champion. For his work, The Eccentric honors him as the area's Coach-of-the-Year.

KINNISON HAD the unfortunate experience of watching his team wind up the 1962 campaign with a 2-7 record and certainly wasn't expected to set the league afire this year.

But, the Falcons, under his ex-

(See COACH, 2-E)



JIM KINNISON

Long Range Weather Forecast:

- Cold
- Snow
- Slush
- Ice



WINTERPROOF YOUR CAR NOW!

Warm Weather Won't Last Forever... Beat The Rush!

- WINTER CHANGE-OVER
- LUBRICATION
- MOTOR TUNE-UP

BE SAFE with SEAT BELTS
1 SET (1 Person) \$9.50 2 SETS (2 Persons) \$18.85
Installed Free!

Service Department Open Daily 7 AM to 6:30 PM—Saturday 7 AM to Noon
Bring Your Corvair HOME For Service... The Corvair Service Center, 2305 Cole Street, B'ham



Patterson CHEVROLET Co.

1000 S. WOODWARD • BIRMINGHAM • 644-2735

First Team

Pos.	Player	Wt.	School	Year
E	Ron Jacobson	205	Seaholm	Sr.
T	Pete Johnson	210	Groves	Sr.
G	Sandy Eynon	155	Bloomfield	Sr.
C	Craig Johnson	160	Seaholm	Sr.
G	Tom McKennie	195	Groves	Jr.
T	Larry Willey	185	Cranbrook	Sr.
E	Rick Hacht	190	W. Bloomfield	Jr.
QB	Dan Greig	168	W. Bloomfield	Sr.
HB	Ken Heft	160	Seaholm	Sr.
HB	Al Proctor	170	Groves	Sr.
FB	Brant Conley	225	Seaholm	Sr.

Second Team

Pos.	Player	School	Year
E	Gerry Appleby	Bloomfield	Sr.
T	Rick Snyder	Seaholm	Jr.
G	Larry Judd	Groves	Sr.
C	Lee DeGalen	Country Day	Sr.
G	Larry Zidar	W. Bloomfield	Sr.
T	Tom Barlow	Cranbrook	Sr.
E	Dan Van Mourik	Brother Rice	Sr.
QB	Bill Stephenson	Groves	Sr.
HB	Jay Shimmick	Bloomfield	Sr.
HB	Jim Larson	Southfield	Sr.
FB	Jon Marks	Country Day	Jr.