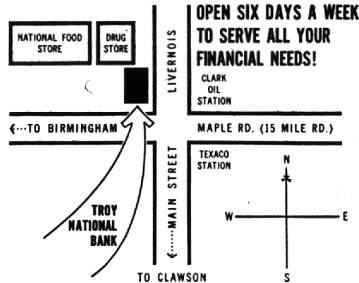


TROY NATIONAL BANK

PRESENTS

TROY'S MOST BEAUTIFUL BUILDING LIVERNOS AND FIFTEEN MILE ROAD NOW OPEN TO SERVE YOU...

NOW
FREE
CUSTOMER
PARKING



NOW
DRIVE IN
BANKING
SERVICE

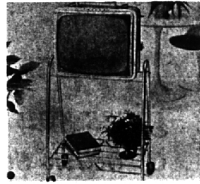
Attend Our Grand Opening Celebration

STARTING FRIDAY NOVEMBER 1st AND
CONTINUING DURING ALL OF NOVEMBER

WIN ONE OF 35 GRAND PRIZES



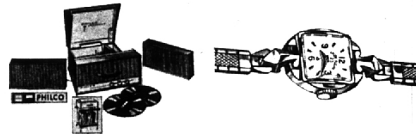
FIRST PRIZE — PHILCO 23" Console T.V.



SECOND PRIZE — Philco Briefcase 19" Portable T.V. with stand



THIRD PRIZE — Philco AM-FM Stereo Hi-Fi Console Radio-Record Player



FOURTH PRIZE — Philco Stereo Portable Record Player

FIFTH PRIZE — Lady Elgin Watch



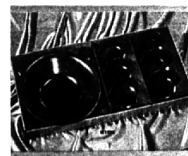
SIXTH PRIZE — Lady Elgin Watch



SEVENTH PRIZE — Panasonic Transistorized Tape Recorder



EIGHTH PRIZE — Samsonite Decorator Group Card Table and Chair Set



NINTH PRIZE — Fame Nine Piece Black Walnut Salad Set



TENTH PRIZE — Cory Jubilee Coffee Maker and Cory Automatic Party Chef

Plus 25 AM-FM Table Radios with AFC Switch

GRAND DRAWING NOVEMBER 30 • SIMPLY ENTER YOUR NAME

• YOU NEED NOT BE THERE TO WIN

Plus **4%**
ON REGULAR SAVINGS
INTEREST

Regular Passbook Accounts with withdrawal privileges . . . 4% paid on amounts on deposit 12 months, 3 1/2% paid on deposits of less than 12 months. Interest compounded 4 times a year. Deposits insured up to \$10,000 by F. D. I. C.

Plus **FREE**
Personal Checking Accounts

No Service Charge With Minimum Balance of \$300 or More Per Month

Plus TROY NATIONAL BANK'S
9:30 a.m. - 4:30 p.m. hours Every Weekday
INCLUDING SATURDAY
OPEN 'TIL 6:00 P. M. ON FRIDAY

TROY NATIONAL BANK

OPEN 'TILL 4:30 EVERY WEEKDAY INCLUDING SATURDAY • MEMBER: FEDERAL DEPOSIT INSURANCE CORPORATION