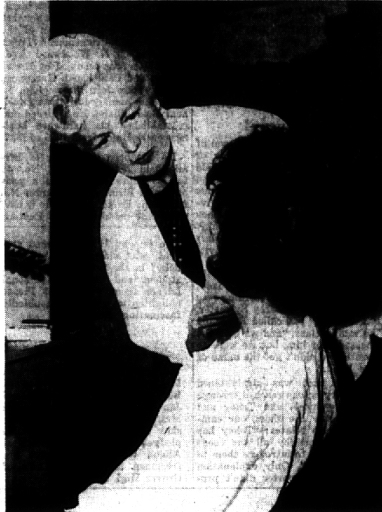


Backstage — Out Front at St. Dunstan's Opener



LEADS MRS. EUGENE MOORE (LEFT) AND JERRY McMECHAN WITH DIRECTOR MRS. F. D. HENDRICK, JR.



Eccentric Photos by Bill Thom
MRS. EARL WESTON APPLIES MAKEUP TO MRS. ROBERT FRICK
 Strictly in the tradition of Broadway, St. Dunstan's opened its dramatic season last week with "Critic's Choice", a gay, sophisticated piece which kept the audience applauding madly until the final curtain. The red carpet was rolled out (literally under the canopy), most people "dressed" for the occasion and back stage all was as festive as gift bouquets and champagne (after the show) could make it. The performance will be repeated this Friday and Saturday evenings, review of the comedy to be found in this week's Eccentric, 1-D.



MRS. DAVID LAWRENCE AND LARRY FINN



BRIAN POLLARD IN CHARGE OF LIGHTING



AMONG AUDIENCE MRS. BID CUTTING, DAUGHTER PATTY AND MR. CUTTING

Collegiate Sorosis Installs Officers At Orchard Lake

The first meeting of the year for Collegiate Sorosis of Michigan will take place today at a noon luncheon at Orchard Lake Country Club.

Following luncheon there will

be an installation of officers elected for the 1963-'64 season. They are Mrs. W. J. Whitcroft, president; Mrs. Stuart Fuster, vice president and social chairman; Mrs. Frank Arens, secretary; Mrs. Gerry Dudley, treasurer; Mrs. Wayne Smith, membership chairman; Mrs. Dean Hopper, Pan-Hellenic chairman, and Mrs. Robert C. von Maur, publicity.

October 24, 1963 THE BIRMINGHAM (MICH.) ECCENTRIC 5-CC



ROBERT RAISCHES CHECK OUT BABYSITTER

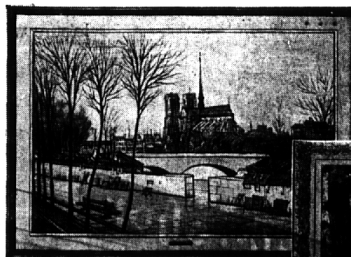


MR. AND MRS. BRUCE SMITH MAKE ENTRANCE

come see our tremendous display of Big Beautiful Pictures!

Enjoy Paintings by some of the World's Greatest Artists . . . Faithfully Reproduced . . . Elegantly Framed . . . and ready to hang in Your Home!

Choose from the works of Rembrandt, Corot, Constable, Homer, Inness, Van Gogh and others



"Notre Dame de Paris" by Lambert, 29" x 41" overall

"Vermont Bridge" by Eric Stone, 29" x 40" overall



"Canal at Venice" by Conoletto, 32" x 46" overall

Enjoy the rich heritage of the world's great art. These are reproductions of paintings by the greatest names in art, both past and present. They are so perfectly reproduced that you might think you were looking at the costly originals! And the magnificent gallery-type frames are in keeping with the fine quality of these reproductions. Adding beauty and distinction to your home, their impressive size makes them ideally suited for display over your fireplace or on your living room wall. Each picture bears a label on back, giving a story about the artist who painted the original. This outstanding collection is on display at both stores.

YOUR CHOICE ONLY

\$29⁹⁵

SIZES TO 32"x48"



"Rue St. Vinič" by Maurice Utrillo, 29" x 45" overall



4080 TELEGRAPH RD.

At Long Lake Road

644-7370

Open Mon., Thurs. & Fri. 'til 9

and

24 WEST HURON ST.

In Downtown Pontiac

FE 4-1234

Open Monday & Friday 'til 9



A WIGGS'

FEATURE VALUE

FOR FALL!



Imported Hollow-Stem Champagne Glasses

Diamond-lustre, with polished hollow-stem & cut crystal base

8 for \$7⁹⁵

Elegant champagnes you'll want for festive occasions . . . for the holidays ahead . . . or for gift giving!

BLOOMFIELD STORE ONLY

★
 Come see our tremendous assortment of fine imported stemware for bar or table . . . ON DISPLAY AT BOTH STORES.