

### Open New Apartments

Spaciousness and convenience are the concepts stressed in the new Foxcroft Apartments at Telegraph and Maple roads in Bloomfield Township. The 98 units will feature both two and three bedroom apartments. Also included on the 15-acre site is a swimming pool, sun deck, pitch and putting green course and shuffleboard facilities. Designed and developed by Robinson Brothers, the apartments are scheduled for completion in June, 1964.

### Three Pierce St. Merchants Plan Warehouse Sale

Three Birmingham merchants are combining efforts this week to stage an old-fashioned warehouse sale.

The Prep Shop, Games Imported and the Varsity Shop are turning the warehouse they share, in the alley behind Pierce north of the Detroit Edison lot, into a salesroom Friday and Saturday.

Bill Wisner, owner of the Prep Shop, said the merchandise is of first quality and consists of odds and ends, out of season or slightly soiled goods.

THE WAREHOUSE will be decorated with various flags and banners and the three merchants promise outstanding values.

Three young men decked out in top hat, tails and bus drum will be touring the downtown area this week announcing the start of the sale.

The hours will be from 12 noon till 6 p.m. on Friday and 10 a.m. until 6 p.m. Saturday.

### Miller Joins Hills Advertising Agency

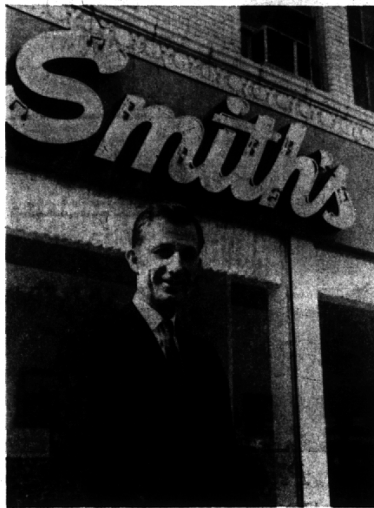
Clifford G. Miller has joined MacManus, John & Adams, Inc., Bloomfield Hills headquarters office as account executive for the agency's Alstie Homes account. It has been announced by Ernest A. Jones, president.

Before joining M&A Miller was associated with Buchen Advertising, Inc., Chicago, as director of merchandising. His extensive experience in home building and associated fields includes earlier posts with the Celotex Corp. as sales promotion manager; manager of color TV market development for the Radio Corp. of America and regional sales manager of the Crayle Division of AVCO.

A native of New York City, Miller earned a BA degree from Columbia College in 1939. During World War II he served as a bomber pilot with the Eighth Air Force, and was discharged a major. Married, and the father of three daughters, he will live in Birmingham.

### Meeting Scheduled

The Oakland County Chapter of the National Association of Accountants will conduct their final fall seminar, Oct. 24, at Devon Gables. Meetings will be held from 5 to 6:30 p.m. followed by dinner.



### Open New Store

William Smith opened the doors of his new Early American furniture store at 128 S. Woodward, Birmingham, last week. The new shop includes a complete line of Colonial accessories, television and stereo sets. The location formerly housed the Birmingham Gallery of Triangle Furniture Co. Mr. and Mrs. Smith also own a furniture store in St. Clair Shores.

### Stock Executives To Conduct Forum At Bloomfield High

Four account executives of Merrill Lynch, Pierce, Fenner & Smith will conduct an investment forum in the Little Theater of Bloomfield Hills High School at 8 p.m., Oct. 24.

The forum will include a movie on how stocks are bought and sold, a discussion on economy and a question and answer period.

Taking part in the forum are J. Edward Schwartz, Charles W. Dare, William W. TenEyck and John P. Adams. All of the men are Birmingham residents. Reservations for the forum may be obtained by calling the Fisher Building Office of Merrill Lynch.

### Mobil Oil Names B'ham Resident District Manager

Walter A. Guthrie, division general manager of Mobil Oil Co.'s Detroit division, has announced the appointment of Howard Bradley, of Birmingham, as Michigan industrial district manager.

Prior to his appointment Bradley was fleet manager in the Detroit division. Bradley joined the company in 1954 as industrial sales representative in Ohio.

### Elected

John T. Suydam, III, manager of dealer sales for the Burroughs Corp. in Detroit, has been elected chairman of the manufacturers division of the National Stationery & Office Equipment Association at its 55th annual convention in Chicago. He lives at 6820 Mark Court, Bloomfield Township.

### Attending Seminar

George I. Tebbel, 1407 Wrenwood Drive, Troy, is participating as a seminar leader in the National Association of Accountants regional conference being held today and tomorrow in Detroit. The subject of the conference is "Getting The Most From Your Standard Cost System."

### The Hillage Gourmet Restaurant

Lunches — Snacks  
Dinners  
377 Hamilton Row  
(Behind Deery's)  
Tel. 646-5450

### WALTER W. MORRIS FLORAL CENTER

4819 Rochester Road MU 9-4662  
Just South of 18 Mile Rd. Troy

Visit our exhibition of interesting and "out of the ordinary" flower arrangements.  
Moderately priced  
Floral Creations for all occasions  
Modern and Heritage Designs by Norman

**NEWTON'S VW SERVICE**

**COMPLETE VOLKSWAGEN REPAIR**

550 S. ROCHESTER ROAD  
Between 13 and 14-Mile Roads  
HOURS: 7:30 A.M. to 8:00 P.M. 588-9885

## NEWS OF BUSINESS

### Behind The Store Fronts



With ANGUS MCKELLAR

Most of the new stores rapidly nearing completion in the Bloomfield Shopping Plaza (Telegraph and Maple) are showing signs of strong individuality.

One of the more unusual is the redwood motif of the new men's and boys' wear Argyle Shop. The redwood idea is carried from the front exterior design back through the store to include redwood counters. The 6,500 square feet in the store probably adds up to the largest store of its kind in this area. Quality lines in men's and boys' dress and sports wear from teenage-up will be carried.

Eugene Sims, 702 Judy Lane, Bloomfield Twp., an area resident for seven years, will manage the new store, which will open about Oct. 24 or 25.

The del Gandios, at 148 Pierce St., are exhibiting an unusual collection of wedgwood china. Wedgwood, we understand, has been a name in chinaware for over 200 years.

The remodeling of the showroom at Bob Hurst Lincoln-Mercury, Inc., 175 S. Woodward created a considerable more amount of room for displaying the new 1964 models.

EDWARD EVERS has been appointed manager of the S.S. Kresge Co.'s new Bloomfield Plaza store, (Maple & Telegraph). He counts 12 years with Kresge's and was formerly assistant manager to Harvey Kresge at the Birmingham store several years ago. The new plaza store is scheduled to open Oct. 31.

Of interest to Rollei-fex owners is the new system of wide angle and telephoto supplementary lenses known as Mutars, now on display at the Birmingham Camera Shop, 108 S. Woodward. They are designed to fit old and new models of the popular Rollei-fex cameras.

Fred Sherman, of Sherman Shoes, 115 W. Maple, and Mrs. Sherman, have just returned from attending the National Shoe Show in Chicago which was held Sunday through Wednesday. Styles for Spring, 1964 were shown.

JOINS PR Staff  
McLouth Steel Corp. has announced the appointment of William V. Murphy to the public relations staff. Murphy, 1722 Pine, Birmingham, has been in their sales department for the past six years.

CHA-CHA-CHA ADULT DANCE CLASSES FROM JACK BARNES  
MI. 7-1282 219 W. Maple LI. 7-2833

**Awareness, Inc. Presents . . .**

**STUDIO "A"**  
A Program Of The Fine Arts  
Each Sunday, 3 to 9 P.M.  
on **WABX 99.5**  
STEREO

- ★ Opera
- ★ Drama
- ★ Folk Music
- ★ Commentary
- ★ Variety

### Seek Shareholders Of Rock Island RR For Merger Support

G. W. Cowherd, 31161 Church Hill Drive, Beverly Hills, of the Rock Island line is contacting share holders of his railroad in this area in support of a merger of the Rock Island with the Union Pacific.

There are 13 Rock Island stockholders in the Birmingham area, Cowherd said.

The Rock Island representative said that his management and every member of his board of directors recommend stockholder approval of a Union Pacific merger, and he is working to help get the holders of at least two-thirds of Rock Island's stock to vote for the merger. A two-thirds majority of the stock is needed to gain stockholder approval at a special meeting called in Chicago on November 15.

# DOLLAR STRETCHERS

that save you money

Here are real bargains in materials for the home.

#### LOUVER DOORS

A GOOD BUY  
Many kinds. All sizes.

1'x6" x 1 1/2"	\$5.25
1'3" x 6"8"	\$5.50
1'6" x 6"8"	\$5.80

#### BLACKTOP DRIVEWAY SEALER

5-GAL CAN **\$6.95**

#### PREFINISHED PANELING

WELDWOOD QUALITY  
"There Is None Better"

ANTIQUE BIRCH	\$ 8.95
COLONY OAK	9.65
AMBER ELM	11.95
CONCORD CHERRY	13.95

PAVCO  
SUNTAN CATIVO . . . \$5.95  
CHERRYSTONE CATIVO . . . 5.95  
WHITESONE SAHARA 7.49  
FRUITWOOD SAHARA 7.49  
PECAN . . . . . 13.49  
UNBELIEVABLE VALUES

All Above 4x8 1/2 Panels

#### SHUTTERS

TOP QUALITY — LOW PRICES

EXTERIOR SHUTTERS from \$9.95 pr.  
INTERIOR SHUTTERS from \$1.10 ea.

#### BRUCE BLOCK

FOR OLD NEW FLOORS  
PREFINISHED TOP QUALITY only 54¢ sq. ft.  
ALSO IN STOCK BRUCE RANCH PLANK

WE WILL HELP YOU DO IT YOURSELF OR RECOMMEND A QUALIFIED CONTRACTOR

# BIRMINGHAM LUMBER & SUPPLY CO.

1025 HAYNES STR. MI 4-3636

Between Adams & Hunter—5 Blocks South of Maple (East of Greenfield's)  
Hours: Mon. Thru Fri. 7:30 to 5:30 P.M. — Sat. 7:30 to 4 P.M.



## your doorway to independence

Everyday more and more people put their money into insured saving accounts at Birmingham Federal and withdraw their money for the things they want and need. Save with us and you'll have your money . . . plus excellent earnings . . . ready for the things YOU want when you want them. Why not step through our doorway and open your savings account today?

**4% CURRENT RATE**

COMPOUNDED and PAID QUARTERLY

# Birmingham FEDERAL SAVINGS

Main Office — 99 W. MAPLE, CORNER OF PIERCE — MI 4-1711  
Bloomfield Office — CORNER MAPLE and LAHSER — 646-1165  
Berkley Office — 3055 W. 12-MILE RD. — LI 5-7610