

SWING ADULT DANCE CLASSES ARE FUN JACK BARNES
 2810 W. Maple LL 7-2833

The U. S. Constitution was actually written by Gouverneur Morris, a Pennsylvania delegate to the constitutional convention, who was given the job of putting all the convention's resolutions into polished form.

WABX 99.5 FM
 IN THE CENTER OF YOUR FM DIAL
 W.O. 1-1995

University of Detroit Football
 Saturday, October 19th at 1:55
 Play-by-Play by Dusty Rhodes
 The Titans meet the Cincinnati Bearcats at Cincinnati, Ohio
 Brought to you by your Greater Detroit Plymouth-Valiant Dealers

YOUR GARDEN CENTER
 GET READY TO—
 1. Complete the planting of SPRING FLOWERING BULBS
 CROCUS TULIPS LILIES DAFFODILS NARCISSI HYACINTH GRAPE HYACINTH SNOWDROPS MISCELLANEOUS
 Be sure to put BONE MEAL under the BULBS. Be sure to WATER well if soil is dry.
 2. Protect EVERGREENS, SPRING FLOWERING SHRUBS and NEWLY PLANTED material from desiccation by spraying with FOLI-GARD or WILT-PRUF.
 Foli-Gard is also excellent for HOUSE PLANTS to protect them from the usual hot dry air prevalent in most homes.
 Both of these materials are excellent for preservation of CHRISTMAS TREES, GREENS, FLOWER BOUTIQUE, and GOURDS. Available in aerosol bombs.
 3. Take advantage of our FREE DELIVERY OF SALT for your WATER SOFTENER.
 FINE or GRANULATED MEDIUM FLAKE PELLETED LOUISIANA ROCK DETROIT ROCK 50 lbs. SALT BLOCK
 We will place it WHERE YOU WANT IT. We will empty it in your BRINE TANK. We will set up a SCHEDULED DELIVERY to suit your convenience. ALL OF THIS AT NO CHARGE TO YOU.
 4. The Birds who have enjoyed all summer will help you this winter if you attract them to your YARD NOW. They will clean your trees of bugs, eggs, larvae, etc., and provide a fascinating panorama of action color and "life in the raw."
 REGULAR SEED CRANBROOK SEED SCRATCH FEEDS—LEAF CARRIERS CRACKED CORN SHELLED CORN SUNFLOWER SEEDS PEANUTS SUET SEED CAKES FEEDERS EAR CORN HOLDERS WATER WARMERS YOU NAME IT
 5. Provide bridge prizes, gifts, home decorations with FLAM-BOUYANTS
 The almost perpetual oil light which uses water and inexpensive cooking oil costs about 1/4¢ an hour. (Candles cost 2¢ an hour.)
 3 DISCS, 100 WICKS, 2000 HOURS OF LIGHT FOR \$1.29
 6. GET RID OF LEAVES!
 PARKER SPRINGFIELD SWEEPERS 8 BUSHEL 5 1/2 BUSHEL—4 BUSHEL BURNING BASKETS—LEAF CARRIERS COMPOST MAKER
 OPEN HOUSE SATURDAY, NOVEMBER 2nd FUN—CIDER—DONUT HOLES BRING THE YOUNGSTERS (This is get "acquainted" time)
 8. The exciting WIND CHIMES are now available in lovely soft colors.
 DO IT!
McCLELLAN-BALL CO.
 Everything for the Yard and Garden
 850 S. WOODWARD, BIRMINGHAM, MICH. FREE AREA DELIVERY Midwest 4-4128

City Delays Taking Action On Rezoning

Birmingham city commissioners Monday night delayed taking action for one week on a request to rezone a lot on 14 Mile Road near Woodward from residential to parking. The Detroit Bank and Trust Co. is seeking the zoning change so it may tear down a home on the property and build a new entrance and exit to the bank parking lot. Commissioners have been reluctant in the past to rezone residential property to a parking classification.

THE WEEK'S DELAY was set by the commission to allow bank officials to work out a satisfactory screening arrangement with the abutting-property owner or to come up with a plan that would not involve the destruction of the house.

DETROIT BANK and Trust officials say they need the extra space for driveways to take care of the heavy traffic using the parking lot and also as a safety factor for traffic on 14 Mile Road. The Birmingham Plan Board has recommended the zoning change be approved.

Explosion
 (Continued from 1-A)

nothing unusual when he ran out in front of the building. Police believe the bomb was planted in a long concrete planter that runs along the front of the building and is protected by an over-hanging roof.

ALTHOUGH THE Michigan State Police Crime Laboratory has not yet been able to determine exactly what type of bomb was used, there is a possibility it could have been placed in the planter hours before it was set off. The damage in the building itself was confined primarily to four booths along the front wall of the restaurant. Flying glass and walnut paneling, however, were tossed over most of the eating area, and the impact of the blast imbedded a piece of wood in a wall on the other side of the building.

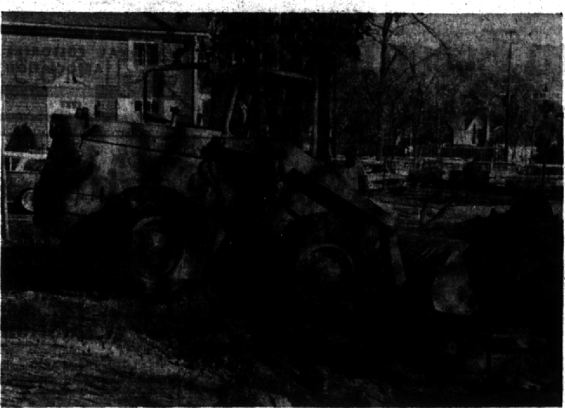
FLYING BRICK outside the building destroyed the restaurant sign, scattering letters over the front lawn. A four-foot strip of concrete was thrown over 100 feet and came to rest in the median of Woodward Ave. The Kingsley Inn on Woodward near Long Lake Road was bombed on the evening of May 25, 1960. The dynamite bombing, which destroyed a rear boiler room, was never solved.

ENJOY ADULT DANCE CLASSES WITH NO CONTRACTS JACK BARNES
 2810 W. Maple LL 7-2833

personalized Christmas Cards 10% Discount
 If You Order Now!
 Take our Christmas Album home... select the card you want in the quiet of your home with the family. Order now and save 10%!

Bodines
 172 N. Woodward
 MI 4-1177

NEW SUITS FOR Fall
 Choose from our large selection of new patterns and colors in all the finest fabrics. From \$75
Matthew's
 Alterations for Ladies and Gentlemen
 FORMAL RENTALS
 Open Fri. eve. 'til 8 p.m. MI 4-1177
 288 E. Maple Brigg's Bldg.
 FREE PARKING IN REAR



Parking Lot Progress

All of the houses on three-quarters of the block south of Shain Park have been torn down and workmen have begun grading and installing a drainage system for Birmingham's new municipal parking lot No. 7. A temporary lot will be constructed for use this winter and until after an Oakland County Circuit Court ruling on condemnation proceedings for the three remaining homes on the block. The temporary lot will hold about 90 cars.

Lutheran Men's Clubs Join in Annual Banquet

Redeemer Lutheran Men's Club hosted the men's clubs of the First Presbyterian and First Methodist Churches of Birmingham Wednesday evening. The occasion was the ninth annual Maple Road Men's Clubs Banquet, sponsored by the men's clubs of the three churches on a rotating basis.



DR. O. P. KRETZMANN

Building
 (Continued from 3-A)

cautions, and then would not accept responsibility for the break-up, according to Holmes. "It is our recommendation," Holmes said, "that concrete should not be placed after Nov. 1, under any conditions, and that after Oct. 15 all newly placed concrete pavement should be protected as called for in specifications, for a minimum of 14 days." He also suggested that truck traffic not be allowed over such pavement until load limit restrictions had been lifted in the spring.

MILDRED SMART ANTIQUES
 Several Pennsylvania Fracturs and Early Woodcuts
 330 West Tienken Rd. Rochester
 OL 1-5631
 A telephone call suggested, we are not always here.

Set Harvest Dinner
 A Harvest Dinner, featuring roast beef and home-made pies, will be held from 5:30 to 7 p.m. next Thursday at Embury Methodist Church, 1305 E. 14 Mile Road, Birmingham. Home-made caramels will be sold.

Bugas Accepts Key Post in Fund Raising

John S. Bugas, of Bloomfield Hills, vice president - international group, Ford Motor Co., has accepted a key post in the 1968-69 fund-raising campaign of the Foreign Policy Association, a nonprofit, educational organization. Bugas is chairman of the automotive committee. The campaign seeks increased support for the association's expanding program to stimulate wider public interest and participation in world affairs. This year's budget goal is \$1,045,000. BUGAS IS A member of Ford's board of directors, executive committee and administration committee. A leader in civic affairs in metropolitan Detroit, he has devoted much time the last several years to the United Foundation, which he has served successively as chairman, president and board chairman. He is a member of the board of the Economic Club, the Boys' Clubs of Detroit and the Boys' Clubs of America.

GLEN MICHAELS AT LITTLE GALLERY
 915 East Maple, Birmingham, MI 4-5566
 Open Tuesday through Saturday, 9-6
 OCTOBER 20th - NOVEMBER 16th

MILLS PHARMACY
 1740 West Maple at Chesterfield Phone: Midwest 4-5600
 ALWAYS A PLACE TO PARK

NECK-DEEP IN TREATMENT
 For many years, neuralgia victims had to endure such treatments as using packs of hot sand. There's a world of difference in today's remedies. Thanks to our medical scientists, they're reliable. But don't use any medications indiscriminately. Your physician should be your guide... he's the only person qualified to decide when you need medications. Let him do the diagnosing and prescribing. We'll be glad to fill his prescriptions for you.

Beautiful Ranch-Type Home — sale at sacrifice
 For description see classified ad under houses for sale. MI 4-8424

GASLIGHT TOWN • GASLIGHT TOWN • GASLIGHT TOWN
GRAND OPENING OF OUR NEWEST SECTION OF
 Beautiful Wooded Gaslight Town
 Birmingham-Bloomfield area
 Come and See Our FALL SHOWING of 3, 4 & 5 Bedroom COLONIALS or custom built to your needs
 The "TOWN CRIER" Value Home of the Year 4 Bedroom, 2 1/2 Baths—2 Car attached Garage a beautiful home priced from \$23,500 including 100 lot
 City Water, Sewers, Asphalt Paving and Gas Heat
 Models Open Daily 1 to 8 P.M.
BENICKE and KRUE BUILDERS
 342-5220 • Models MI 7 1544
 Ask about our proven Trade-In program