

# Jaycees Hawk Pumpkins by Tractorload

The sound of bells in the streets in the next couple of weeks may not be the Good Humor man making his rounds.

Peek through the curtain; the bells may signal the coming of a tractor pulling a wagon full of pumpkins.

If so, it is a chance to pick your Halloween jack-o-lantern from the pile offered by the Birmingham Jaycees, while contributing to their scholarship fund.

All proceeds go towards 20 \$500 scholarships—one presented to a Groves High School senior and one presented to a Seaholm senior each spring.

BESIDES THE touring wagons, the Jaycees will have "permanent" sale stands at Cranbrook and Maple, at the Franklin Cider Mill and at the shopping center at Maple and Telegraph this Friday and Saturday and next Friday and Saturday from which go-getting celebrants can select just-the-right Jack-o-Lantern from more than 16 tons of pumpkins.

ALL CITIES within this group were rated against the top 30 communities which were considered as having achieved 100 per cent ratings. Birmingham's rating for 1962 was listed as 76 per cent as against 72 per cent the previous year.

Osment said the survey is used as an instrument for measuring and evaluating functions only rather than for appraising organizations or departments. The inventory is to serve as a guide for improving safety programs.

# Local Traffic Safety Program Improved

By LARRY EVOE  
City Editor

Birmingham's traffic safety program is better than it was in 1961 according to figures released last week by the National Safety Council.

An analysis of the annual Traffic Safety Inventory was presented to the City by Cpl. Mel Osment of the Redford Post of the Michigan State Police.

Although Birmingham's actual standing in the survey was not revealed, Osment said the city placed high among the 218 other communities in its category of the 25,000 to 50,000 population group.

CATEGORIES rated included the death and injury record, accident records, traffic engineering, police traffic supervision, traffic courts, school safety, public safety education and organization of traffic safety improvements.

Birmingham's strongest area of the survey was in the death and injury category where the city obtained a 100 per cent score. The weakest showing was in the public traffic safety education program where only 58 per cent was scored out of the possible 100.

The education program dropped 13 points from the 1961 survey. Osment pointed out, however, that the drop didn't mean the program was any worse than last year's.

"Some cities may have emphasized the public safety education program which would boost the overall average of the 218 communities rated," Osment said.

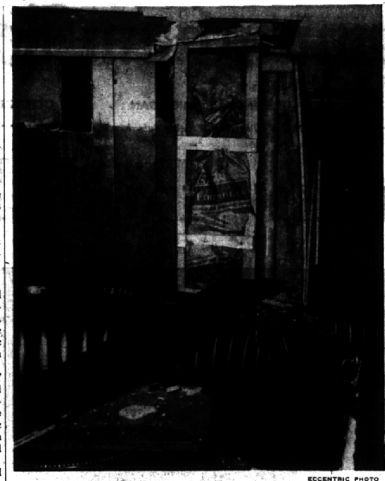
THE SURVEY did suggest that Birmingham might undertake a program aimed at major local traffic problems and that the subject of traffic safety be scheduled for more meetings of local civic, business and service organizations.

"These meetings," Osment said, "produce an excellent opportunity to present traffic problems directly to the people."

He also suggested that the number of different safety posters on display be increased.

The survey urged the formation of a "Citizens Safety Organization," made up of top community leaders to develop interest in and support for needed traffic improvements.

Now Uncle Sam is willing to sell much wheat to impoverished Russia—wheat as necessary for food as armaments are for war. Tragically, can you reconcile these two facets of dealing with Russia? Inconsistency, of course, is a jewel in the crown of international diplomacy—and "practical politics."



**BOOTHS WERE** ripped asunder and broken glass strewn over the floor inside Bedell's by the explosion, which insurance adjusters estimate caused \$8,000 in damages. The blast, an apparent bombing, is the first ever recorded in Bloomfield-Towship.

# Bomb

(Continued from 1-A)

was found embedded in a rear wall directly in the path of the blast.

Several pieces of fire equipment were brought in from the township department but were not used.

One insurance adjuster said that repair would be a matter of patchwork—not new construction.

Bedell indicated that the restaurant would be open for business again by noon today.

HARTGE SAID that he and Bedell had searched the phone for some clue as to who might want to damage the restaurant and had thought of no one.

"We haven't had anything like this in the township during the 10 years that I've been here," said Dehke. "Nor can I remember any before that, either."

Police were first tipped off to the possibility of bombing by what they described as the "odor of hostile explosive material."

The restaurant closed at 2 a.m. Wednesday as usual, and the porter was the only employee remaining after 2:30, Hartge said.

The establishment was remodelled and reopened last year by Bedell and Hartge, after being closed for four years. It was formerly a Howard Johnson enterprise.

# Speaker Addresses Women's Group at St. David's Church

Mrs. Gertrude Trupe of the Diocese of E.W. Board, who is chairman of the Episcopal Community Services, will be guest speaker before the Episcopal Churchwomen of St. David's Episcopal Church, 17211 W. Twelve Mile Road, Southfield.

Devotions and a business meeting at 9 a.m. will precede Mrs. Trupe's talk from 10 to 11 a.m.

She will inform the group on the work of the ECS which includes the World Relief Program, the Presiding Bishop's Fund, St. Peter's Home for Boys, Williams House and Mariner's Inn.

A RECOMMENDATION by the township planning commission that 131 feet of frontage on Telegraph south of Maple be rezoned from multiple to commercial was approved by the board.

The rezoning operation must be completed by May, 1965. The lake must conform to agreed engineering specifications. A \$10,000 performance bond is to be posted by drag-line operator John Gohl. Gohl must also remove all equipment from the site except that used in the excavation.

# Land

(Continued from 3-A)

A decision on a rezoning petition to change from residential to multiple a nine-acre parcel at the northeast corner of Square Lake and Mulberry roads was delayed for two weeks.

The planning commission denied the petition. The township board asked owners to get final plans from the Oakland County Road Commission as to how much of the nine acres would be used in the widening of Square Lake Road which will become a limited access road for the Chrysler Expressway.

# B'ham to Send Representative to GTRR Hearing

Birmingham will send an official representative to a public hearing Monday regarding a Grand Trunk Railroad request to cancel two trains that serve the city.

Commissioners reconsidered a decision made last week to send only a letter expressing the City's concern over the possible loss of an early morning and late evening commuter train service.

A representative of the Friends of the Grand Trunk, a group recently formed to help the commuter service, presented commissioners Monday with a petition signed by 22 residents asking the City to send a representative to next week's meeting before the Michigan State Public Service Commission at Detroit's Veterans Memorial Building.

# RFE

(Continued from 3-A)

mander of the U.S. forces in Berlin told us that the job of the U.S. Army in Berlin is to contain the enemy and the job of Radio Free Europe is to sustain the hopes of the people behind the Iron Curtain and Colonel Kennedy, commanding officer of the Eleventh Armored Cavalry said RFE is a valuable source of intelligence for his operation.

So long as the Iron Curtain, a symbol of modern barbarism, continues to divide East from West, so long as the men and women behind it are deprived of a free press and of the right of self-determination—so long will there be a need for this voice of the free world—Radio Free Europe.

# CHA-CHA-CHA ADULT DANCE CLASSES FROM JACK BARNES

2519 W. Maple St. 7-2933

# Devise Plan For Service To Company

City commissioners have tentatively approved an agreement to provide municipal services to a company that will be located partly in Troy.

Only minor details still have to be worked out between the city administration and the Michigan Building Components. The firm's property is located east of the east end of Cole street.

Under the agreement Birmingham will provide sewer, water, police and fire protection to the property.

The company will be taxed the regular rate for the 30 per cent of the property located in Birmingham and it will pay a fee equal to the Birmingham tax on the remaining 70 per cent of the property. The City will then refund to the company an amount equal to the Troy tax.

THIS, IN effect, eliminates the possibility of double taxation. The company's total bill will not be greater than if the entire property were located in the city and was subject to Birmingham taxes.

Under the agreement the company will make every effort to have the property annexed to the city of Birmingham. It will be required to take all necessary steps, including circulation and filing of petitions to place the annexation issue on the ballot in both Birmingham and Troy.

All building permits required for the construction of buildings on the property will have to be issued by Birmingham and they must comply with the city's various building codes and ordinances.

Even though annexation to Birmingham is desirable, commissioners generally agree it is almost impossible because of the tax benefit to Troy.

Looking for a job, a home... a special service? Use the Want Ads.

**Named by Romney**  
George Gullen, Jr., 5245 Adams, Birmingham, has been named to Gov. Romney's 12-member Mental Health Advisory Council. He will serve until 1967.

**10% DISCOUNT**  
On Remodeled Christmas Cards  
Thru Oct. 31st.  
LaBelle's  
127 W. Maple

# You are invited to attend— A STOCK MARKET FORUM

Sponsored by  
**MERRILL LYNCH, PIERCE, FENNER & SMITH INC.**  
208 Fisher Building  
Detroit 2, Michigan

Place:  
Bloomfield Hills High School Little Theatre  
(Just south of Long Lake Road and ¼ mile west of Telegraph Road)

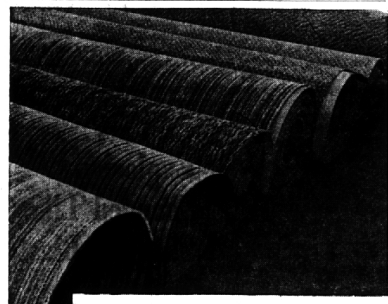
Time:  
Thursday, October 24th — 8:00 p.m. until 9:30 p.m.

The forum will feature:  
1—A selected film on how stocks are bought and sold  
2—A discussion on the outlook for the economy.  
3—A review of selected industries.

Please make reservations for the Stock Market Forum.

NAME \_\_\_\_\_  
ADDRESS \_\_\_\_\_  
CITY \_\_\_\_\_ PHONE \_\_\_\_\_

**MERRILL LYNCH, PIERCE, FENNER & SMITH INC.**  
MEMBER NEW YORK STOCK EXCHANGE AND OTHER PRINCIPAL STOCK AND COMMODITY EXCHANGES  
208 Fisher Building, Detroit 2, Mich.  
Telephone: 874-3700



# STRIPES

New ones just arrived... 2 wools at \$6.95  
2 nylons at \$7.95... blended fibers and wide variety of colors. Best is noted for good stripe carpets. See these.

# Best

Open 'til 9—Woodward at 1½ Mile Rd.

Portraits in oil or pastel by **ARTIS LANE**

by appointment  
863-1246  
DI 1-1460

STUDIO  
16121 LAWTON AVE.  
DETROIT, MICH.

now ready for immediate delivery... and only at Triangle

**tamerlane**  
**40% off**

Exotic, sophisticated styling has made this exquisite group one of America's most popular; and no wonder! Each piece is masterfully interpreted in rich oriental holly enhanced with the romantic richness of acacia burl, skillfully blended and hand rubbed to a warm golden Patina. Each piece is as practical as it is beautiful and now at tremendous savings... rectangular tables, spacious marble top sideboards, magnificent breakfronts with 2 dramatic chair styles to choose from... and the timing is perfect for gracious holiday entertaining ahead. Select yours today, quantities are limited!

**6 PIECE GROUP... REGULARLY \$629**  
• 44" rectangular table (extends to 78" w/1 leaf)  
• 54" marble top sideboard  
• 4 slat back side chairs  
**NOW \$379**

**7 PIECE GROUP... REGULARLY \$655**  
• 38" rectangular table (extends to 80" w/2 leaves)  
• 60" buffet base  
• 60" glass door china deck  
• 4 cane back side chairs  
**NOW \$399**

**TRIANGLE**  
FURNITURE  
818 North Woodward at 1½ mile road...open every evening till 9