

## Folklore Society Has 2nd Festival

The Detroit Folklore Society will stage its 2nd Anniversary Festival by concert in the Lecture Hall of Saturday, Events will take place at both the Detroit Institute of Arts and the Detroit Historical Museum.

The day will begin with a "Fam- enny vs. Folk Music." It will be moderated by Dick Marsh of WQRS-FM, who lives at 556 Bird, Birmingham.

Following this, at 4:30 p.m., will be a hootenanny.

The final event will be an Alex Pavlini Memorial Concert at 8 p.m. in the Lecture Hall of the Institute of Arts.

## Country Home & Scenic Estate

Set high on a hilltop (elevation 628 ft.) containing 78 green and wooded acres. California Redwood 2 level main residence with its 90 ft. long balcony offering inspiring vistas at all seasons of the year has 4 bedrooms and 3 baths. Thermopane windows, slate floor, entrance, library, St. Charles kitchen are some of the other improvements. 80 additional acres with 5 bedroom farm home and other outbuildings available. This unusual property within 40 miles north of Detroit offers the ultimate in recreational and entertainment facilities. Brochure and further details available.

OTHER ESTATE PROPERTIES

## ANNETT INC., REALTORS

28 E. Huron, Pontiac Federal 8-0466  
Open Evenings and Sunday 1-4

2-D THE BIRMINGHAM (MICH.) ECCENTRIC October 10, 1963

Following this, at 4:30 p.m., will be a hootenanny.

The final event will be an Alex Pavlini Memorial Concert at 8 p.m. in the Lecture Hall of the Institute of Arts.

## Church Group Has Fifth Antique Show

St. Andrew's Confraternity of Christian Mothers in sponsoring their Fifth Annual Antique Show and Sale in the church hall on Walnut Blvd. The show will run for three days starting Nov. 5, at 11 a.m. and ending Nov. 7 at 10 p.m.

Dealers from Bloomfield Hills, Royal Oak, Detroit, Flint, Holly, Troy, Oxford, Lapeer, Northville and Ann Arbor have been asked to join in the show.

## BRIDGE



in BIRMINGHAM

By RUD MAYBAUM  
Southern Michigan  
Bridge Association

Birmingham is proud of its Betty Pope and Helen Bernardini for coming in first over-all in the Women's Pair event of the Windsor Maple Leaf Bridge Championship recently held at the Prince Edward Hotel.

The hand was selected for them, as played in this competition, is one that you can take a quick glance at and know at once is a sure no-trump hand. But most players do not arrive at this obvious contract.

Top bridge authors have discussed this general type of a hand and have written special conventions to cover the problem. Champions Betty and Helen found their own way of handling the situation to arrive at a tied-for-top board. Neither side vulnerable. Dealer is South.

NORTH  
(Helen Bernardini)

♠ A 10 5 4 3  
♥ 10 5 4  
♦ 8 4  
♣ A 10 8

WEST EAST

♠ K J 7 2     ♠ Q 9  
♥ J 8 2     ♥ K Q 7 3  
♦ 7 6     ♦ J 8 2  
♣ J 7 6 3     ♣ K 9 5 4

SOUTH  
(Betty Pope)

♠ 8 6  
♥ A 9 6  
♦ A K Q 10 9 8  
♣ Q 2

The bidding:  
South West North East  
1 NT pass 2 ♣ pass  
2 ♣ pass 2 ♠ pass  
3 NT all pass

Opening lead: 2 ♣  
Betty was the opening lead of the ace of spades with the ace in dummy and immediately played the eight of clubs. This gave Betty ten tricks for a tied-for-top board. Only a heart lead would hit this hand to nine tricks.

THE USUAL OPENING FOR this hand is one diamond by South, an over-call of one spade by the partner and the re-bid of two diamonds by the opener.

Betty saw at once the problem of her re-bid if she opened one diamond, having seven tricks in her own hand and wanting a no-trump contract, although she had merely 15 high-card points.

One new book out suggests an opening bid of one club—an artificial bid showing a strong hand and allowing partner to bid one diamond, also artificial, if she is broke. In this hand North would bid one spade. With this affirmative bid they would also arrive at a three no-trump contract.

RECENT WINNERS in Birmingham tournaments include Louise Benjamin and Elida Murphy; Dr. and Mrs. W. Walker; Grace and Jack Stone; Lois and Burt Mann; Arlene and Burt Heck; Elva Benkens and Dorothy Seibold; Loreta Rice and Sue Woodruff; Phyllis and Jack Malstrom; Terry O'Hearn and Robert Murphy; Mrs. M. Harper and Mrs. S. N. Fenwick; Jane Cartwright and Elizabeth Metcalf; Charlotte England and Bernard Leipeter; Harry Malchie and Edwin V. Clarke; Adelaide Weststrate and Helen Campbell; Marge Wickwire and Jean Heugh.

THE SOUTHERN Michigan Bridge Association will hold their winners game for October on the 13th.

The other important date to remember is Oct. 17, the commencement of the Regional Tournament at the Detroit Leland Hotel. All championship events will be two sessions, afternoon and evening. Thursday will be the Men's Pair and Women's Pair; Friday will be the Mixed Pairs; Saturday is the Open Pair and Sunday is the Team-of-Four. They will also have side games each evening and at other times when conditions permit it.

## African Art Featured In Three Area Exhibits

October is the month for a crash course on African art, if you're so inclined. In a phenomenon akin to an astronomical eclipse African art is currently being featured at Cranbrook, Oakland University and the Detroit Institute of Arts.

Two separate exhibitions, both entitled "Arts of Africa," are being shown. One at the Detroit Institute of Arts, which was assembled under the direction of Willis P. Woods by the Institute, opened Sept. 24 and will run through Nov. 3; the other, at the Cranbrook Galleries, which began Oct. 4 and will run through Oct. 24, is circulated by the American Federation of Arts.

IN CONJUNCTION with the "Arts of Africa" exhibition, Cranbrook is also showing "The African Collection" of fabrics designed by Jack Lenor Larsen and Win Anderson.

Tied in with the Detroit Institute of Arts exhibit is a Detroit Adventure fall "conversation" program of eight lectures on "African Art and Society." All will be illustrated with films slides or records. The opening lecture on Oct. 23 will be delivered by Willis Woods, Institute director. Further information may be obtained through the Institute or Detroit Adventure.

AT OAKLAND University a collection of primitive art—many items from the personal collection of former Michigan governor, now Assistant Secretary of State for African Affairs G. Mennen Williams—will be on display in the University Gallery in North Foundation Hall through Oct. 31. The collection includes Oceanic and American Indian pieces as well as African Art.

E.L.O.

# THE Keating Column

News and views on the real estate business plus some of Keating's warranted value homes.



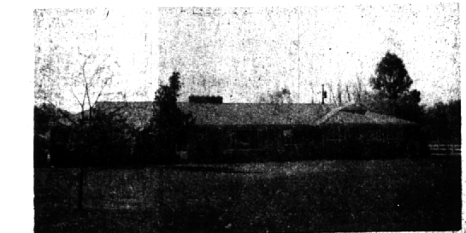
On a beautifully wooded site walking distance to Birmingham schools, here's a most delightful "Wife-Saver" home. Three bedrooms, large living room, covered porch, extra sized garage. Way above average in quality, this full basement home is below the market in price at \$34,900.

Real Estate Education is big business! There are approximately six thousand students in Real Estate classes this fall. University of Michigan, University of Detroit, and Oakland University (formerly M.S.U.C.). All offer five courses in Law, Appraising, Finance etc. If you would like more information on these courses, give us a call, we'll be glad to help.



Just reduced \$3,000, here's a good buy in a really luxurious home. In beautiful Bloomfield Glens, it has 4 extra size bedrooms, super family room and lower level patio. The special features are too plentiful to mention such as sprinkler system, etc. Simply gorgeous at \$56,000.

The number of homes listed for sale in the Birmingham-Bloomfield area is lower than we can remember. Keating has more buyers than homes. If you have been thinking of selling, give us a call and we'll have a Keating counselor over in a jiffy to give you an informed estimate of sale price. No obligation of course.



One of the best buys in the area! This superbly built one floor home is in excellent condition and has four bedrooms, large family room, sparkling kitchen with Flair stove. Carpeting and draperies included at \$32,900.

Have you noticed the many new office buildings going up around town? Well designed and highly functional they will be a pleasure to work in, well, almost. The face of our downtown changes rapidly and generally for the better. While we're on the subject we'd like to congratulate our neighbor Weir, Manuel and Snyder for the delightful face lifting job on their office. It's a credit to the area.



Right in Bloomfield Village, here's a lovely home that's priced for quick sale at \$37,500. Three large bedrooms, family room, bright kitchen are just a few of its features. Your Keating Counselor will be pleased to arrange a showing.

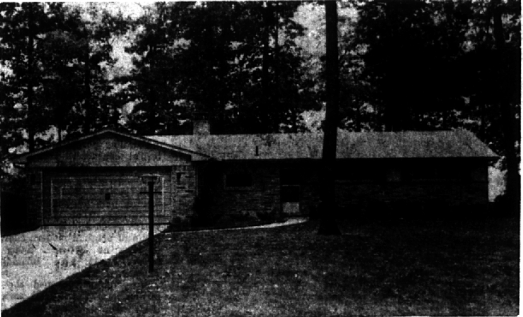
"A GREAT NAME IN REAL ESTATE"

Howard T. Keating Company

245 S. Woodward

Midwest 6-1234

## 1/2 ACRE PLUS



A SUPERIOR RANCH—in a gorgeous setting with mature towering oaks and excellent landscaping.

- 25-foot Living-Dining room with fireplace.
- Large Family room with fireplace.
- Kitchen with built-in oven, stove and Breakfast area.
- 3 good-sized Bedrooms, 2 full Baths.
- 24 x 16 Patio in rear.
- Living room and Family room are carpeted. All Bedrooms have oak parquet floors.

In Bloomfield Hills School District. Country Living with easy access to town. SUPERB CONDITION. Only \$24,900.

## SNYDER KINNEY & BENNETT

INC.  
Realtors

MI 4-7000 MA 6-9600  
239 S. Woodward, Birmingham 32740 Franklin, Franklin

## VAUGHN and BLOOMFIELD HILLS SCHOOLS



Beautiful White Painted Brick Ranch—Decorator colors

- 4 bedrooms with 2 1/2 baths . . .
- Separate dining room . . .
- Lovely large living room with fireplace . . .
- Fireplace in recreation room . . .
- Kitchen with all built-ins . . .
- Carpeting in living room, dining room, hall.



**FRED PIERCE INC.**  
460 NORTH WOODWARD, BIRMINGHAM, MICH.  
Midwest 7-1414

## Rummel Brothers Donate Stock to Concordia College

Martin F. Rummel, 1168 Lyonnhurst, Birmingham, and brothers Alfred T., Walter J. and Edwin G. have donated a gift of shares of General Motors stock to Concordia Lutheran Junior College, Ann Arbor.

The gift was made in memory of the Rummel parents, John A. and Marie M. and eldest brother Eugene J.

Dividends of the stock are to be used to provide a scholarship grant for Concordia students. Martin Rummel is a member of the college's board of control.

## IMMEDIATE OCCUPANCY

Bloomfield's finest apartment residence

Luxuriously appointed 2-bedroom, 2 1/2 bath apartment. Home, Center, Hotspot, built-in refrigerator, range-oven, refrigerator, disposal, fan. Private laundry. In-unit wall wardrobe closets. Hotspot air-conditioning. Parking facilities also proposed recreation center—pool, parking area, club. See board. Family located close to shopping and churches. From \$150/mo. Includes taxes and insurance. BROCHURE ON REQUEST J08-1018

**FOX CROFT APARTMENTS**  
BAPLE AND TELEGRAPH BIRMINGHAM, MICHIGAN  
BROCHURE ON REQUEST J08-1018