

Geneva: a Sparkling Crossroad

GENEVA, SWITZERLAND — It has been a privilege to spend a week in this city of 200,000 people which is nestled on Lake Geneva.

It has the flavor of culture and charm and is the crossroads of Europe—somewhat similar to our Washington, D. C.

Our room overlooked the lake and was near the Jet d'Eau which is a fountain rising out of the water to a height of 428 feet with 132 gallons a minute pumped up in the air at a speed of 125 mph.

There are numerous tours and boat trips to enjoy from this point.

UPON ENTERING the area we stayed at Montreaux, which is located at one end of Lake Geneva. Nearby was the Castle of Chillon with its prison, immortalized by Byron.

Yesterday we motored to Chamoni at the base of Mount Blanc, 15,000 feet high.

There nestled in the high mountains (some snow-capped) were glaciers, ski lifts filled with young-at-heart people who reveled in the freshness of the air.

We ate our lunch beside a rushing mountain stream.

THE A. A. Appleford from Birmingham are here with us. As I have mentioned previously, they have been using the book "Turn Right at the Fountain" to explore cities. (It calls for exploration by hiking.)

Saturday afternoon—Jack—with the book open, holding it at chest level, reading it as he walked—had the three of us following him in single file through old Geneva. (The streets were narrow, the sidewalks cobblestones.)

We went in Calvin's St. Peter's Cathedral, saw Rousseau's home, and wound in and out of courtyards—just like a treasure hunt! What fun!

WE ATE CHEESE fondue, the famous Geneva dish which every-body sturps out of a common container in the middle of the table.

Another Geneva specialty is fondue bourguignonne. Each guest has pieces of fillet of beef which are cooked on long forks in a central sizzling mixture while stimulating conversation takes place. The pieces are dipped in various mixtures once they are cooked to perfection.

Mrs. David (Mary) Watt, well-known in Birmingham and a recent transplant here, has begun a smooching binge. I'm sure I wouldn't ever live here long enough for this selection of chosen food!

A HIGHLIGHT of our stop here has been attending the American Church and have long chats with Perry Williams, the rector here who used to be at Christ Church-Cranbrook.

They enjoy filling their necessary role in the English-speaking colony.

The church is like a community house with arms outstretched to all faiths. The Williams family is reveling in the setting of Geneva and the excitement of this beautiful city.

Henry Whiting of Birmingham also visited the church three Sunday.

THE PALAIS des Nations is the beautiful headquarters for the United Nations in Geneva.

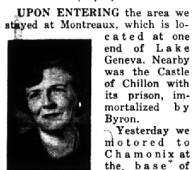
Here, on a rise of land overlooking Lake Geneva and framed by many Cedars of Lebanon, is the beautiful marble edifice where problems of 111 member nations are studied.

Your reporter was privileged to spend a few days in the library of the World Health Organization studying approaches on rehabilitation.

All visitors to Geneva must see the Palais to renew their faith in the oneness of mankind.

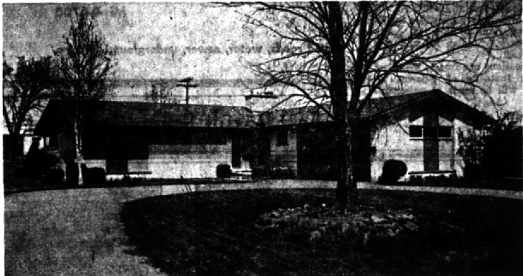
SINCE OUR departure we have slept over, under and between featherbeds. We enjoy the bathtub fixtures where you dial the temperature of water that you wish.

To bring you up-to-date, Europe is in a bustling cycle of prosperity. Automobiles are humming; highways are being widened and built everywhere. People are talking about vacation trips to America. Let's be ready to return the hospitality offered us by our European hosts and hostesses as we sell Beautiful America.



Mrs. Burlingame

CONTEMPORARY BACKGROUND especially designed for beautiful art treasures



Off-white walls, and Off-white linen casement cloth draperies. stained teak floor—background for oriental rugs Shelf length of living room for mobile pieces Music piped into Living room 4 bedrooms, 3½ baths Kitchen with built-ins and BBQ Recreation Room professionally finished.

Bloomfield Hills Schools Fully carpeted Separate dining room fireplace in living room Irregular patio Breakfast space, large kitchen 3 bedrooms and 2 baths.



FRED PIERCE INC.
460 NORTH WOODWARD, BIRMINGHAM, MICH.
Midwest 7-1414

3 WOODED ACRES



ONE OF THE LAST ESTATES IN HISTORIC FRANKLIN VILLAGE Because it's on a main road you will never have to worry about getting out in the winter to go to town or school. BUT it is set far back and surrounded by gorgeous woods for a marvelous built-in privacy. The house itself is a true charmer—a New England Cape Cod with a warm, loved feeling. Huge Living room (22 x 15) with lovely fireplace. Separate Dining room. Large Screened Porch at rear. 2 Bedrooms on first floor, one of which is ideal for a Family room. 3 Bedrooms on second floor, one of which is 21 x 14 and if not needed for a Bedroom would adapt easily to a games room, study or Sitting room. Basement Recreation room. 2-car Garage. Separate tool house. New furnace and hot water heater in 1961. 1000 gallon buried oil tank. Nice dark room for the photo enthusiast. PERFECT FAMILY HOME for COUNTRY LIVING CLOSE TO TOWN. Only \$36,900.

SNYDER KINNEY & BENNETT INC.
MA 6-9600 MI 4-7000
32740 Franklin, Franklin 239 S. Woodward, Birmingham
Realtors

Palette Club To Present Local Artists

Mrs. M. G. Brush, Cedar Bend Drive, Bloomfield Hills; Mrs. John Kinghorn, Publicreek Road, Birmingham; and Mrs. William Hyland, Telegraph Road, Birmingham, are represented by three paintings each in the Palette and Brush Club Show at Robinson Furniture, Wunderland.

One of the Detroit area's oldest art clubs, Palette and Brush began in 1935. Many local artists are active members of this all women's group.

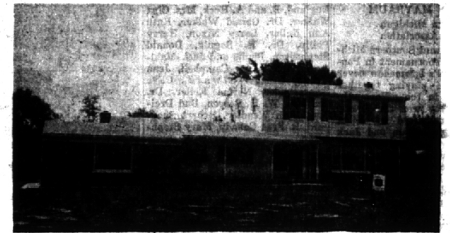
MRS. MERRILL BUSH, Wadlington Road, Birmingham, is the class chairman for the club which maintains its own studio. Class teachers for the coming season are: Denis Michaels, Birmingham artist; William Martner; Patricia Quinlan; and Emil Weddige.

The show at Robinson's is the first of three exhibitions which Palette and Brush holds annually. Ninety oil paintings, collages and watercolors are featured in the exhibit which continues until Oct. 12.

B'HAM ECCENTRIC Page Thursday, October 3, 1963 3-D
Gets Fellowship
Duncan G. Hudson, Jr., 1619 S. Bates, Birmingham, has been awarded a Sears-Roebuck Foundation graduate fellowship in city planning and is now studying in the graduate school of fine arts at the University of Pennsylvania.

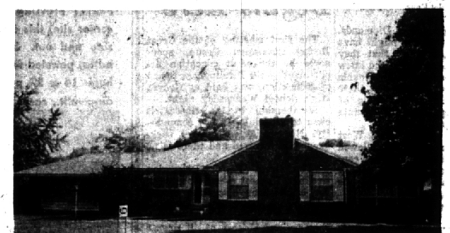
THE Keating Column

News of Real Estate in the Birmingham-Bloomfield area with an occasional sales pitch for Keating's "Certified Value" homes.



Here's a 'convenience planned' home with four bedrooms, two ceramic tile baths and first floor powder room. The huge family room has a brick fireplace wall, there's also a paneled den for Dad. Mother will love the cheery kitchen with lots of breakfast space, and there is a separate dining room. Just a short walk to Bloomfield Hills school. Oh, yes! the price? \$33,900.00 for everything, and you can move right in.

The Housing and Home Finance Agency reports that we will need two million new homes a year by 1970. This is an increase of more than a third of this year's production. Reason? The expected boom in new families for the next several years. Well, we've almost got them out of college. Get ready for grandchild sitting!



This 3 bedroom, 3 bath, full basement ranch is located in excellent city area with fine surrounding properties. Walk to Midvale Elementary School and Seaholm High School. Priced at only \$29,500.

Did you know that the Keating Company is now Michigan's largest land developers? And that our 'in town' office at 245 South Woodward is equipped to give you one of the area's finest home sales services?



This rambling ranch occupies a gorgeous wooded site in Beverly, and has a full lower level area equipped with a fine rec room and bar. There are three bedrooms, sparkling kitchen and an extra large living room. Walking distance to Birmingham schools. \$37,900.00, and well worth it.

Water and Sewer facilities continue to come into our area at a great rate; we see sewers being installed in the Long Lake-Telegraph subs, the water pumping station that will supply most of the North Bloomfield area is just about ready to go, and activity continues in the Berkshire. If you have questions on these facilities as regards timing, costs, etc., your Keating Counselor will be glad to help you.



Smack in the heart of Bloomfield Village, here's a real good buy. The owners have already been transferred, and want to sell NOW. The well built house has three large bedrooms, family room that's just super, lovely kitchen with breakfast area. A really comfortable home. Priced at \$37,500 but open to offers.

A GREAT NAME IN REAL ESTATE



245 S. Woodward

Midwest 6-1234