

### A Critical Triangle

A theatrical triangle—actress, critic and director—has comical angles which make the base for "Critic's Choice," the opening performance of the season for St. Dunstan's. Hoping to make laughter the "sine of the times" are (from left) cast members

Mary Moore, Jerry McMechan and Larry Finn—artist, critic and director respectively. The production will be performed Oct. 18, 19, 25 and 26 in the Cranbrook Pavilion on Lone Pine Road, Bloomfield Hills.

### Pianist Gives 1st Concert Of OU Series

Pianist Ruth Slenczynska, the former child prodigy who played a full hour's recital of Bach, Chopin and Beethoven at the age of four, will perform the opening concert of the Oakland University-Community Arts Council Concert Series Saturday.

The concert will be at 8:15 p.m. in the auditorium of Pontiac Northern High School. Series tickets are available at the Division of Continuing Education, Oakland University. No single performance tickets are offered.

Now in her mid-30's, Miss Slenczynska's unique life story as a child prodigy and adult concert pianist was the subject of the book, "Forbidden Childhood," published by Doubleday's and also printed in McCall's. She has given more than 500 concerts in the past five seasons and has done several recordings for Decca Gold Label.

### Two Area Women Will Be Lecturers In Pontiac Series

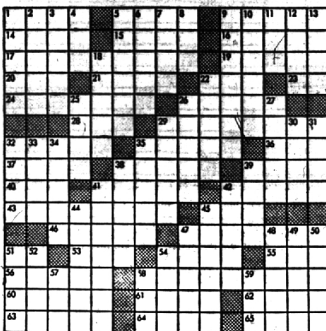
Two Bloomfield area women are scheduled to appear on the series Friday weekly "Talk of the Town" lecture luncheons, offered to the public by Rotunda Inn, Pontiac.

Gay Yankee of the Ball of Wax, Birmingham, will discuss "Candle Witchery in Autumn Arrangements" Oct. 18.

"BEAUTY BY THE Basketful" will be demonstrated by Ruth Taylor of the Ruth Taylor Studio of Plant Design, Bloomfield Hills. Mrs. Taylor will show how to make simple hanging-basket arrangements and basket centerpieces. The luncheons are scheduled for 12 noon followed by the program at 1:30 p.m.

- ACROSS**
- 1 Bank fence
  - 3 Noble character
  - 9 Head
  - 14 Telling blow
  - 15 Hand
  - 16 Special opera
  - 17 invade
  - 19 Aquatic mammal
  - 20 Composer
  - 21 Anglo-Saxon slave
  - 22 Paper coin
  - 23 direction
  - 24 Cooked
  - 25 Fur
  - 28 --- and down
  - 29 Rhine
  - 32 Allotment
  - 35 Muck
  - 36 Sled
  - 38 Sleigh song
  - 39 Exchange
  - 40 Develop
  - 41 Shadow
  - 42 Muralist
  - 43 Time limit

Answers to Puzzle Will Be Found on Page 7-D



PUZZLE NO. 776

### 2+2=5? Then Here's Your Book!

High school students who are still limping in arithmetic have a book written especially for them. Just off the presses, it is co-authored by Dr. David Wells, director of mathematics education for Oakland Schools.

The book, "Trouble Shooting Mathematics Skills," is organized to help students and teachers find out just where the trouble lies when seventh-to-12th graders consistently come up with wrong answers in calculation.

The West Bloomfield School district, among others, is using Wells as a consultant in curriculum upgrading projects.

### Science Institute Offers Star-Gazing For High Schoolers

Do you know how to use a star chart? If you are a junior high school student, you can learn this and many other interesting things during a new seven-session astronomy course at Cranbrook Institute of Science which makes its bow Oct. 17.

Using classroom, planetarium and observatory, the course will be held on Thursdays from 4 to 5:30 p.m., Oct. 17, 24, 31 and Nov. 7, 14 and 21. In addition, one evening will be scheduled in the observatory where the Hubert six-inch refracting telescope will be used.

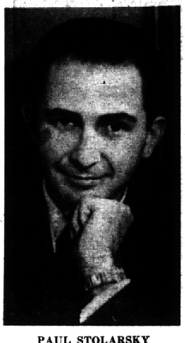
Notification of intention of registering for the course must be given to the Institute of Science but actual registering may be made at the first session. There is a tuition fee.

### Raven Readers Theatre To Do 3 One-Act Plays

Three new one-act plays by former Detroit Norman Wexler will be premiered at the new Raven Gallery in Birmingham when the Raven Readers Theatre returns on Oct. 8, 9, 15, 16 and 17.

"The Rope," "A Week from Today" and "Behold de la Musica" are Wexler's plays which will be given their first public performance at the Raven. Wexler, a member of the New Dramatists Committee in New York City, has a given special permission for this debut presentation to be staged under the direction of Morton Zieve.

**FEATURED ACTORS** will be Jay Michael, Paul Stolarsky, Mary Lou Zieve and Mariette Schwartz. Jay Michael is one of Detroit's leading actors as well as being a familiar voice on radio and television commercials. For many years he was on several top network radio programs emanating from Detroit. Recently he appeared in several presentations at the Raven.



PAUL STOLARSKY

Paul Stolarsky received cheers for his performance in the first production at the Raven Readers Theatre. He is also well-known for his appearances in the lead role in Edward Albee's "Who's Afraid of the Virgin Mary" at the Stables Theatre and again at Wayne University.

**MARY LOU Zieve** and Mariette Schwartz are also returning to the Raven after taking part in the first presentation of this season's Raven Readers Theatre.

**DIRECTOR** Morton Zieve is

currently working with his collaborator, lyricist Rudy Simons, on a revised version of their musical melodrama "Billy, The Kid" which is slated for a Raven production at the end of November, according to Herbert Cohen, Raven managing director.

Zieve is an account executive at Simons-Michelson Company, Detroit.

Certain time at the Raven Gallery for the Wexler plays is 9:30 p.m.

Examinations for tourist guides in Mexico are so rigid that only 20 per cent of those seeking the required government authorization are accepted. All tourist guides must speak English and have a knowledge of Mexican art, geography and folklore.

### THE PROTECTION OF GUIDED BUYING IS YOURS

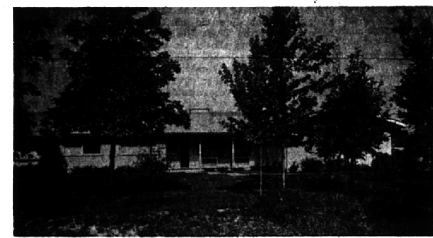
When you look with Brook

#### ARTIST'S DREAM HOUSE



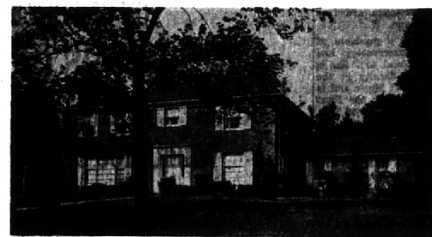
**BUT—you don't HAVE** to be an artist to live in it. Unique in every way from balconied studio or Family room, to the step-down living room. Deep windows across the rear of the house offer a vista of trees and the sparkle of water. 2 fireplaces, 2 full baths, 1st floor laundry, separate dining room, are the conveniences. Add to that a sizeable quantity of that illusive ingredient "charm." \$42,500.

#### SURPRISE PACKAGE



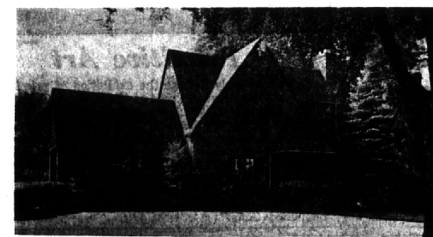
A roominess that is unexpected for we couldn't bend the camera around the corners to give you a full view. **ALL** rooms are large and the plan outstanding. 3 bedrooms, 2½ baths, 30x14 living room, 17x12 family room, 8x20 laundry. The enormous patio with its colorful shrubs and flowers invites relaxation and forms a picture book setting when viewed from the living room. \$29,900.

#### QUARTON LAKE VIEW



Quality construction is evident throughout in this 4 bedroom center entrance Colonial. The kitchen will delight the homemaker from its well arranged work space with all the built-ins, to the large breakfast area that opens to a covered patio. Plenty of play space for small fry with a 1st floor Family room and a "Rec" room downstairs. Price includes quality carpeting and new drapery. \$53,900.

#### GOOD SOUND VALUE



Adams school is within walking distance of this well maintained home. Three bedrooms, 1½ baths plus stall shower in basement. Large porch on the rear overlooking the garden. "Rec" room with tiled floor. Gas heat. Carpeting and drapery included at \$28,500. At the Risk of being REPETITIOUS—A good sound value!

### Movie Guide

Parenteen Committee  
Birmingham P.T.A. Council

MOVIE	Green Sheet	National Legion of Decency
Gidget Goes to Rome	A-MY-Y	A-1
Jason and the Argonauts	GA	A-1
Hootenanny Hoot		A-2
Tarzan's Tugue Challenges	GA	A-1
TK Kill a Mockingbird	A-MY-Y	A-2
Lt. of Adrian Messenger	A-MY-Y	A-1
Time Machine		A-2

**CODE GREEN SHEET**

These audience symbols are intended as broad guides to selection, and do not indicate either recommendation or non-recommendation of the films to which they are applied.

- A Adults
- MY Mature Young People
- Y Young People (12 years to 16 years)
- C Children (unaccompanied by adults)
- GA General Audience

- NATIONAL LEGION OF DECENCY**
- A1 Morally Unobjectionable for General Patronage
  - A-2 Morally Unobjectionable for Adults and Adolescents
  - A3 Morally Unobjectionable for Adults
  - B Morally Objectionable in Part for All
  - C Condemned

**SG** A separate classification is given to certain films which, while not morally offensive in themselves, require some analysis and explanation as a protection to the uninformed against wrong interpretations and false conclusions.

### NOW LEASING

- THE FINEST IN NEW MODERN OFFICES
- CHOICE LOCATION—DISTINCTIVE EXTERIOR
- DIGNIFIED paneled INTERIORS
- DAYLIGHT LIGHTING
- ZONED AIR CONDITIONING
- PAVED FREE PARKING
- PARTITIONING TO SUIT
- MANY OTHER DESIRABLE FEATURES
- Reasonable Rates—Late '63 Occupancy

**EXECUTIVE BLDG.**

690 E. Maple Ave.

Carl Larson

MI 4-0103



MAX

**BROOK INC.**

INC.

"Nationally Known Realtors"

300 S. Woodward

MI 4-6700

JO 4-6700

Open daily 9 to 9 Saturday 9 to 5