

## Mrs. Crawford Named Woman of Year Entrant

Mrs. Robert Crawford has been elected to represent the Birmingham Junior Woman's Club in the state-wide competition for the federated junior woman's clubs "Woman of the Year."

Mrs. Crawford is the wife of the assistant principal of Lincoln High School, Warren, and has two children, Robert, 11, and Pamela, 7.

She has served as second vice president of the Birmingham Junior Woman's Club and is presently the club's representative to Loch Rio girl's home.

FALL HAIR fashions high-

lighted Tuesday's meeting of the club at The Community House.

Convertible hair styles and wigs were modeled by club members Mrs. Robert Crawford, Mrs. William Gray, Mrs. Roger Spry, Mrs. Alvie Smith, Mrs. John Denton, Mrs. Paul Nielson and Mrs. Bruce Van Deusen.

Grace Scalia, fashion coordinator for Bernards hair stylists, presented the program.

Club members entertained their preschool children Sept. 25 at the annual fall outing at Springdale Park. Cochairmen were Mrs. Brodley Brown and Mrs. John Sweger.

# Birmingham Turns Out for Gaiety at Club

## Plum Hollow Goes Parisian

While other folk are adorning their clubs with somber autumn tones, Plum Hollow Golf Club had one last fling at the clear, gay colors of spring and summer Saturday night at its gay, sophisticated Paris party.

Shocking pink and French blue were the colors used for the invitations, the same colors used in the quilt flower cart in the lobby.

As guests moved into the main lounge they saw a large Eiffel Tower twinkling with pink and blue lights. If members still weren't convinced they were in Paris for the evening, they had only to move on to the hors d'oeuvre table and see an ice carving of the tower among the goodies. Strollers played everyone's favorite French songs.

Party-goers dined at tables decorated with ribbons of shocking pink and French blue. In the center of each was a Parisian flower cart gaily filled with tiny blossoms carrying out the colors of the party. To add to the romantic touch, a small light glowed just above the blossoms of each cart. A French blue flag waved supremely on the top.

Earl Perkins and his orchestra, attired in French blue dinner jackets, played from 9 to 1 a.m.

Even the waitresses looked French in their pink aprons and fru-frus. During the evening two artists drew portraits under stripped canopy awnings. A waterfall fountain was used to add interest, plus vines of grapes wrapped around pillars in the mixed grill. To complete the picture and carry out the theme of the invitation, a French chorus line of girls imported from Plum Hollow, did the Can-Can.

Guides for the evening were Mr. and Mrs. Bob Otto, Mr. and Mrs. Tom Rex and Mr. and Mrs. Bill Vallett.



ROBERT SAUER (LEFT), MRS. HENDERSON, MR. BECKER



MRS. EARLES MacPHERSON (FROM LEFT), MRS. CURTIS BECKER AND WILLIAM HENDERSON

## BLOOMFIELD WEST

# Braes Three Slates Bridge Tournament

By ELIZABETH VAN LOAN  
MI 7-2324

Braes Three Association, under the direction of its social chairman, Mrs. John Goruch, has initiated a couples' bridge tournament. Mrs. Andrew Jevich of Kenmore Road is in charge of the event.

Once a month, 12 couples will play, dividing into two tables at three different homes. There will be monthly prizes for individual high scores at each house plus a grand prize at the end of the season for high lady and high man.

ON SEPT. 20, the Willard McPhee, Kenneth Crumba and John Mulford played at the home of Mr. and Mrs. Yevich.

The following night the Gordon Fowles of Inveray Road were hosts to Mr. and Mrs. George By-

water, Mr. and Mrs. William Bishop and Mr. and Mrs. Max Ross. The third group played Friday evening at the Quarton Road home of the Clifford Jacks. Present were Mr. and Mrs. Goruch, Mr. and Mrs. Jim Martin and Mr. and Mrs. Gerald Matz.

THE EPISCOPAL Churchwomen of the Church of the Advent met yesterday for their first luncheon meeting of the season. Mrs. Priscilla Jackson, director of conferences and instructor in creative writing at Oakland University, reviewed the best-seller, "The Feminine Mystique."

A panel discussion followed. Members of the panel included Mrs. Oscar Search, Mrs. Hugh Macduff, Mrs. John Goulden, Mrs. Glenn Heathman and Mrs. Jackson. Mrs. John Wigle was moderator.

AS UNITED Foundation district chairman for Braes of Bloomfield, Mrs. Stan Rapisap of Eastmore Road has been recruiting workers for the Torch Drive. Women who have offered to solicit contributions are Mesdames Daniel Ebbing, William Lutz, Byron Lovrance, Charles Sherman, Glenn Paulsen, Richard Bannister, Walter Gorman and G. G. Vogelfang.

Mrs. Rapisap would welcome four more helpers in order to lessen the number of calls for each volunteer.

THE WEDNESDAY afternoon class in ceramics conducted by Mrs. Richard Guillard resumed for the fall session yesterday in her home on Eastmore Road. Anyone interested in joining

the group or a similar evening group may contact Mrs. Guillard. As a Red Cross gray lady, Mrs. Guillard spends Tuesday afternoons at Pontiac State Hospital working in ceramics with women patients.

SCAVENGER HUNT parties we've heard of, but treasure hunts? In Michigan? We've always associated treasure with sunken Spanish galleons lying off the coast of Florida.

Not so, says Mrs. Joe Koszka of Westmore Road who has been on several treasure hunts here in the state with her husband.

On Sept. 14, they met with other couples in Royal Oak, received a sheet of paper on which the 50 states were listed. From the clue hidden in that paper, they proceeded to 17 Mile and Ryan where a sheet of paper with 10 seeds pasted on it furnished the second clue.

AND SO on, until they arrived at the hunt's terminal point, Fine Knob Ski Lodge, where they had dinner with the group, but were too late to capture one of the three money prizes.

On Saturday, the Koszas were off again, this time on their first week end hunt. Starting point was Royal Oak where 28 couples received the first clue which eventually led them to Boyne Mountain Ski Lodge.

MR. AND MRS. George Shanahan, Mr. and Mrs. Stan Rapisap and Mrs. Robert Kreuz attended St. Owen's parish dinner dance held at Botford Inn's Coach House on Saturday. Mrs. Howard Bingham of E.

Newland Drive entertained at a bridge-luncheon on Tuesday.

Mr. and Mrs. Richard Piersol of Darramore Road had friends in for a potluck supper and bridge Saturday evening. Guests included the Lynn Barbers, Neale Schermerhorns and Harvey Shoemakers.

THE ROBERT Imhoffs of Sunnycrest Drive returned Sept. 23 from a weekend visit to Chicago.

who loans up to \$3,000 on Personal Loans



See page 2, Sec. E

## Devon Gables

(Telegraph at Long Lake Rd.)

PRESENTS A



EVERY FRIDAY

Starting at noon and continuing through the lunch hour.

MI 4-6800

Fashions by

Jacqueline shops

Birmingham

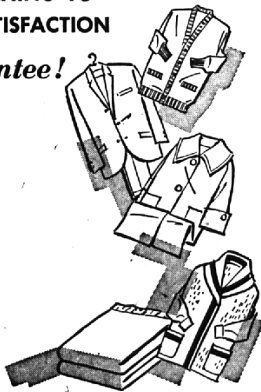
Oak Park

## DRY CLEANING TO YOUR SATISFACTION

WITH A double guarantee!



1. Guaranteed by the BUREAU OF LAUNDRY AND DRY CLEANING STANDARDS
2. Guaranteed by our plant



- Cleaned beautifully . . . thoroughly . . . spots removed . . . colors revived
- Buttons secured . . . minor rips and seams mended
- Finished, shaped and pressed to fit and feel "like new"

\* IN ORDER TO DISPLAY THIS SEAL, we must publish the name and address of our testing laboratory. Any of our customers may contact them direct should they wish to do so.

TESTING LABORATORY:  
BUREAU OF LAUNDRY & DRY CLEANING STANDARDS  
914 20th Street, N.W., Washington 6, D.C.



Two Locations: Woodward at Adams - Midwest 4-4620  
U. Maple at Crestmont - Midwest 7-4111

and SHIRT LAUNDRY

## Fine English Translucent China by . . . ROYAL DOULTON



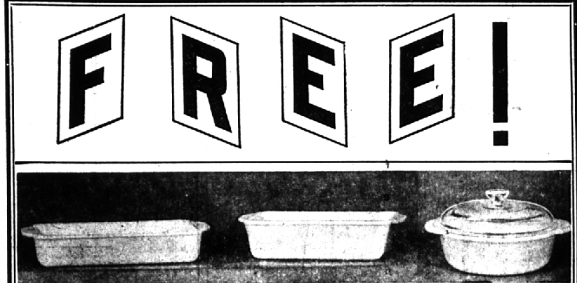
5-Piece Setting . . . . . \$14.95

Six other Royal Doulton patterns . . . 5-piece place settings . . . from . . . \$9.95 to \$14.95

Only one of over 300 Open Stock Dinnerware patterns offering top selections and priced to give top values.

Pontiac Pottery

Michigan's Largest Dinnerware Specialty Store  
NORTH END OF BLOOMFIELD MIRACLE MILE SHOPPING CENTER ON TELEGRAPH ROAD  
Telephone FE 2-8642



TEFLON COOKWARE

Your choice of any of the above beautiful pieces of the famous ANCHOR HOOKING OVENWARE. General oven utility pan, or an oven casserole . . .

## WITH WINTER CHANGEOVER ED STONE'S WINTER CHANGEOVER INCLUDES:

- DRAIN & FLUSH RADIATOR
- CHECK & TIGHTEN ALL HOSES
- RE-FILL WITH ATLAS PERMA-GUARD ANTI-FREEZE
- OIL CHANGE (Change Filter If Needed)
- LUBRICATION JOB
- CHECK HEATER & HEATER CONTROLS

tune-up

IT'S TIME FOR A FALL TUNE-UP! Expert mechanics.

SEAT BELTS

Meets or exceeds Federal Specifications. Metal to metal buckle. Colors.

Installed, \$5.95 (for 1 person)

WE GIVE S&H GREEN STAMPS. AMERICA'S MOST VALUABLE STAMPS!



ED STONE'S STANDARD SERVICE

347 S. Hunter Blvd.

MI 4-9654



OPEN 24 HOURS DAILY 7 DAYS A WEEK