

# DIT Announces Enrollment for New Semester

Robert Garfield, director of admissions, announced today that enrollment at The Detroit Institute of Technology in Southfield reached 2,365 at the close of registration Monday. This compares with 2,120 students enrolled last spring and 2,320 for the corresponding term last fall.

This increase was achieved with a slight decrease in freshmen and transfer student enrollment. "Since accreditation this spring by the North Central Association of Colleges and Secondary Schools, higher enrollment in the upper classes has a substantially increased," said Dewey F. Barich, president of DIT.

"IN OTHER WORDS we are starting to retain, as well as attract, a higher qualified student body with a better balanced distribution of students for each of the four classes."

"It is interesting to observe," said President Barich, "that of the 465 freshman students admitted, over three-fourths are registered and enrolled. Last year only two-thirds of those admitted became students at DIT during registration. Apparently DIT applicants are becoming more serious-minded about getting a college education."

# Chamber Notes

By MARIANNE S. BARNETT  
Director of Public Relations  
Birmingham Chamber of Commerce

You have probably heard someone say, "Why bother with committees, it's a lot easier to do the work myself."

It may seem that way but don't bother with committees and the first thing you know you will not have a chamber of commerce to bother with either.

The members of the board of directors and the manager of the chamber of commerce can't do the job alone—they have neither the time or the energy.

**COMMITTEES ARE** the instruments through which the talents and energies of chamber members are enlisted, organized and directed into community service. Committee work enables individual members to participate actively in the chamber program. Only through such membership participation can the chamber become a vigorous force in the community.

To have a strong dynamic committee, a well qualified chairman must be selected, understanding his duties and the job that is to be done before he meets with his committee.

The chairman must be chosen carefully for the job and his qualifications thoroughly considered. He must be able to command attention and inspire people.

**THE CHAIRMAN'S** ability to communicate is vitally important because good communication helps to unify a group where poor communication causes friction and tends to divide a group.

The duties of the chairman of a committee are many, but in a general sense can be classified into several categories: conducting meetings, keeping records, getting action and evaluation.

The chairman must plan the activities that the committee is to engage in during the year. He must see to it that a secretary is present to keep necessary records and it is his job to be well-informed on what each member of his committee is doing.

A good chairman must display enough enthusiasm to inspire other members to action. After each project the chairman should assist the committee in writing a final report which is presented to the board of directors.

**COMMITTEES MUST** have an objective. In order to do an effective job a committee must get off to a good start at its first meeting and prepare to fulfill its functions in a systematic way.

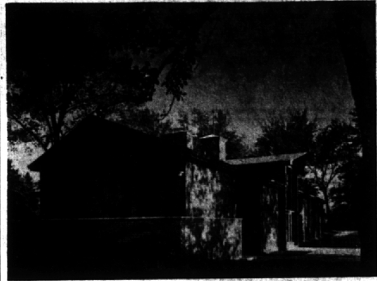
The most acceptable procedure is to apply the scientific method of problem solving. Define objectives. Assign work. Gather facts. Set deadlines. Get outside help. Evaluate results.

After a final evaluation has been made, conclusions should be drawn and a report made.

The plans of committee action must be submitted to the board of directors for approval. After approval by the board, recommendations for action are carried through to completion.

A **NEW POLICY** is soon to be instituted. To widen the scope of activities of the Birmingham Chamber of Commerce a questionnaire will soon be sent to every member. He will be asked to indicate one or more committees that he would be interested in actively working on.

To further our aim to make Birmingham a better place in which to work and live in continue to send your suggestions or criticisms to me, Marianne Barnett in care of the Birmingham Eccentric, 1225 Bowers, Birmingham.



## Dedicate Headquarters

Shown are new state office headquarters of Michigan Children's Aid Society in Farmington which were dedicated Sunday. Gov. George Romney proclaimed Sept. 23-29 Michigan Children's Aid Week. Offices of the Oakland County Michigan Children's Aid Society are located in Pontiac. Six Birmingham-Bloomfield Hills residents serve on the local board of directors.

## Article Features Former Residents Now in Australia

The Carter Bowen family of Beaumaris, Australia, formerly of Birmingham, is the subject of an article in the September issue of "Australia Newsletter," published in Melbourne, Victoria.

Bowen is head of the entire Ford purchasing in Australia. He was

transferred two years ago from Ford's headquarters in Dearborn to the company's Australian headquarters in Melbourne.

The article discusses the family's life in their new "home country." The Bowens have five children, Lucy, 20; Bob, 14; Anne, 12; Betty, 11; and Lynn, 8.

A subscription to The Eccentric brings you the community's top news events 52 times a year.

## Baldwin Uses Pictures for Charge-Out


Book cards of library books borrowed from the Baldwin Public Library, Birmingham, are now being photographed at the charge-out desk.

A newly-installed Regiscope machine makes this possible, according to Jeanne Lloyd, director.

Patrons may borrow as many books as up to seven books at a time can be charged with one push of the button.

**ALTHOUGH REGISCOPE** has been employed in retail stores for some time, the machine is a comparative newcomer to library use. Libraries now using it include the New York Public Library system, as well as those in Dayton, Dearborn, Wyandotte and Ann Arbor. Michigan distributor for Regiscope is J. F. Temple, 187 S. Woodward, Birmingham.

who loans up to **\$3,000** on Personal Loans



See page 2, Sec. E

### AMERICAN ANNUITY LIFE INSURANCE COMPANY

selected by our research department as a stock of growth potential

Latest analysis and fact sheets recently compiled on this stock giving history, company expansion, past sales performance, current sales progress and other details, are now available to you without charge.

Get your analysis and research report right away. Drop in, phone or mail the coupon now.

---

**FIRST OF MICHIGAN CORPORATION**  
Members New York Stock Exchange

Wabeek Building, Birmingham, Mich. Phone: 647-1400

Please send analysis and research report on American Annuity Life Insurance Company, stock without charge.

NAME \_\_\_\_\_  
ADDRESS \_\_\_\_\_  
CITY \_\_\_\_\_ ZONE \_\_\_\_\_ STATE \_\_\_\_\_

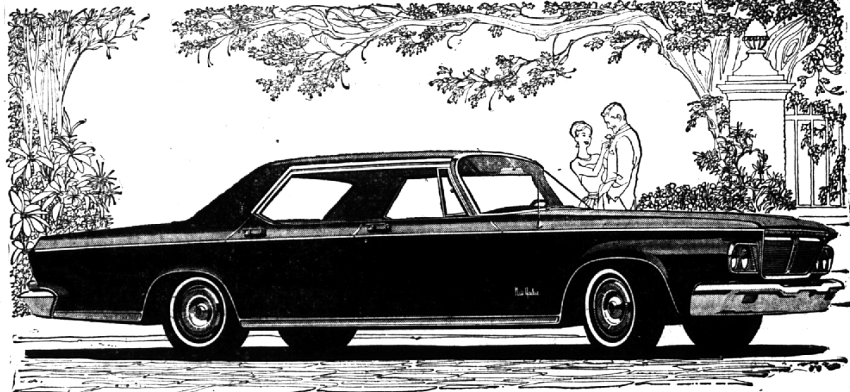
## NEWCOMER?

Have you, or has someone you know, just moved to BIRMINGHAM!

Your Welcome Wagon Hostess will call with gifts and friendly greetings from the community.



Midwest 4-0516  
**WELCOME WAGON**



The luxurious New Yorker.

# MOVE UP TO CHRYSLER '64

## Engineered better...backed better than any car in its class

The '64 Chryslers are here: the luxurious New Yorker; sports-bred 300; and the surprisingly easy-to-own Newport.

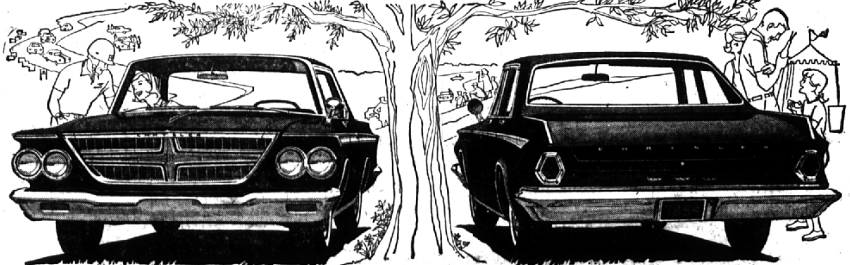
Clean. Crisp. Handsome. Designed in the modern concept. Bold but not brassy. Engineered by men who have accounted for more "firsts" than any automobile maker. So well built the vital moving parts are warranted for 5 years or 50,000 miles. (Details below.)

The '64 Chryslers are full of news: there's an optional steering wheel you can adjust, up or down, to any one of seven different positions. Bucket seats are standard on 300 models. The one on the passenger's side reclines.

These are the '64 Chryslers. Three full-size cars with no junior editions to compromise your investment. They're on display now. Go see them. Move up to Chrysler '64 today.

**Solid protection for a solid investment... 5-year—50,000-mile warranty.** Chrysler Corporation warrants, for 5 years or 50,000 miles, whichever comes first, against defects in material and workmanship and will replace or repair at a Chrysler Motors Corporation Authorized Dealer's place of business, the engine block, head and internal parts, intake manifold, water pump, transmission case and internal parts (excluding manual clutch), torque converter, drive shaft, universal joints, rear axle and differential, and rear wheel bearings of its 1964 automobiles, provided the owner has the engine oil changed every 3 months or 4,000 miles, whichever comes first, the oil filter replaced every second oil change and the camshaft or filter cleaned every 6 months and replaced every 2 years, and every 6 months furnishes to such a dealer evidence of performance of the required service, and requests the dealer to carry (1) receipt of such evidence and (2) the car's then current mileage.

Be sure to watch Bob Hope and the Chrysler Theater, NBC-TV, Fridays.



The 1964 Chrysler 300. Not for the faint-hearted: Its standard V-8 is 383 cubic inches. For a little extra you can go right up to 413. Bucket seats. Torsion-bar suspension.

The 1964 Chrysler Newport is easy to own. Standard equipment includes: tilt-to-tilt carpeting; padded dash; foam rubber front seat cushions; 301 cubic inch V-8.



## WISHING WON'T MAKE IT SO BUT SAVINGS CAN!

It may be a lovely new home, that family cabin-cruiser or a brand new car... whatever your dreams are made of, they can be made a reality only through planning and doing. Plan now to set aside a part of your income regularly; do come in and open a savings account here, where savings earn more quarterly... grow faster!

**4 1/4 %**

Compounded and Paid Quarterly On Savings CURRENT RATE (Per Annum)

Remember, Savings in by the 10th Earn from the 1st.

**Capitol SAVINGS & LOAN ASSOCIATION**

27215 Southfield Rd. at 11 Mile Rd.

KE 7-6125 Detroit office, 234 State St., WO 2-1078 EL 6-7770



BIRMINGHAM CHRYSLER PLYMOUTH, INC., 912 S. Woodward Ave., Birmingham, Mich.