

Community Values

The attractive appearance of Birmingham is enhanced by its tastefully designed homes, neighborhoods and stores but its public facilities must have eye-appeal as well. Two relatively new improvements are the addition to Baldwin Public Library and the construction of municipal parking lot number five. The library was moved from its original location at Maple and Woodward avenues in 1927. Work on the addition began in October, 1959, and was completed a year later. The parking lot, located on Woodward, a few hundred feet north of Willits, has been pleasingly landscaped with rail fences and shrubbery. It was opened in late summer, 1961. At a cost of \$590,000, the lot holds 390 cars.



January 31, 1963 THE BIRMINGHAM (MICH.) ECCENTRIC 7-B

Bishop Dedicates Kingswood Altar

Dedication of the new altar at Kingswood School Cranbrook was performed by The Rt. Rev. Robert L. DeWitt, Suffragan Bishop of the Episcopal Diocese of Michigan and former rector at Christ Church Cranbrook, Jan. 21 in the school auditorium.

The altar was the gift of the class of 1962 and is the first altar the school has possessed.

It was designed and embellished by Richard Thomas, head of the metalsmithing department of Cranbrook Academy of Art, and was constructed in the Cranbrook Foundation cabinet shop.

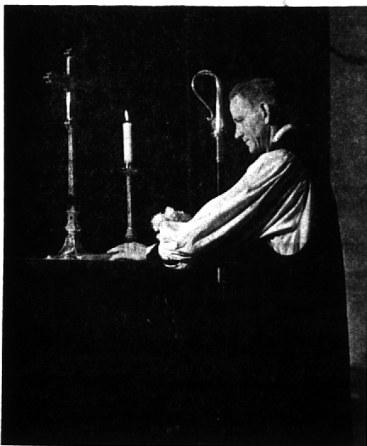
THOMAS EMBELLISHED the front of the altar with the Kingswood School Tree of Life in chrome-plated forged bronze. He

also executed five bronze crosses on top of the altar.

In addition, Thomas has been commissioned to execute the sterling silver altar lights, or candlesticks, which will have incorporated into the design the crown which encircles the Tree of Life in the school's symbol. The altar linens were woven by Mrs. Lillian Holm, head of Kingswood's weaving department.

ALTAR APPOINTMENTS are memorial gifts for Mrs. Nancy Porter and Marguerite Gamble, former teachers, both of whom died last year, and Avery Coehling, a ninth grader who died in 1961.

Chapel services are conducted at the school each Wednesday.



KINGSWOOD'S NEW altar, a gift of the class of 1962, is dedicated by the Rt. Rev. Robert L. DeWitt, Suffragan Bishop of the Episcopal Diocese of Michigan.

Women's Society Sees Film on Others' Needs

The Woman's Society of Christian Service, First Methodist Church, will feature the film "Moment to Act" at its Feb. 6 luncheon meeting.

Viewing of the film will be followed by discussion groups at each table, according to Mrs. Harold Stanton, 842 Donmar, chairman of the day.

The program is designed to help the women be aware of the inner needs of other people.

Mrs. Richard Mänge, 350 Arlington, will give devotions. Circles nine and 12 will serve the 12:30 p.m. luncheon.

The circle chairmen, Mrs. Charles Jacques, 921 Nampa Court, and Mrs. William Benson, 3211 Briarcrest Knoll, Farmington, will be assisted by Mrs. Cecile Blair, 1616 Bracken Road, Bloomfield Hills, and Mrs. Donald Miner, 950 Brooklawn.

DECORATIONS WILL be arranged by Mrs. Wright Tidale,

1377 Lyonhurst, and her committee. The executive committee will meet at 9:30 a.m. A nursery will be provided for the day.

Beginning Feb. 12 and continuing Feb. 19, Feb. 26 and March 5, a study course titled "Today's Children for Tomorrow's World" will be offered from 9:30 a.m. to 11 a.m.

It will be taught by Mrs. Mark Martin, 6172 Lantern Lane, who is Detroit district secretary of Christian Social Relations.

She will be assisted by Mrs. John W. Jolly, 6730 Cathedral Drive, who is the local Christian Social Relations chairman.

The text "Responsible Adults for Tomorrow's World" by James M. Ault, will be used. Mrs. Martin attended the Woman's Society of Christian Service School of Missions at Albion last summer in preparation for the course.

A nursery will be available each week.

Official Nationwide Consumer Testing Institute Report:

FORD WINS ONE EVENT CHEVROLET WINS ONE PLYMOUTH WINS EIGHT

The contestants were a '63 Ford Galaxie "500", a Chevrolet Impala, and a Plymouth Fury, comparably equipped V-8s. The place was the famous test course at Riverside, Cal. The time was early December. The event was the second face-to-face meeting of the three popular low-price cars in an all-around test of car capability—safety, handling, performance, economy—a "Showdown" requested by Plymouth.

Conducting the tests was Nationwide Consumer Testing Institute, who bought the cars, hired the drivers, made the rules and enforced them. As the chart shows, Plymouth took eight of the ten events. What the chart doesn't show is Plymouth's 5-year/50,000-mile warranty*—best in the Plymouth-Ford-Chevrolet league—and Plymouth's terrific good looks. See your Plymouth Dealer. Plymouth's on the move.

ZERO-TO-SIXTY	CITY PASSING
PLYMOUTH.....11.99 sec.	PLYMOUTH.....278 ft.
CHEVROLET.....13.64 sec.	CHEVROLET.....279 ft.
FORD.....18.01 sec.	FORD.....305 ft.
QUARTER-MILE	HIGHWAY PASSING
PLYMOUTH.....18.04 sec.	PLYMOUTH.....462 ft.
CHEVROLET.....18.99 sec.	CHEVROLET.....516 ft.
FORD.....20.53 sec.	FORD.....554 ft.
KILOMETER RUN	EMERGENCY STOP
PLYMOUTH.....33.43 sec.	FORD.....120 ft.
CHEVROLET.....34.44 sec.	PLYMOUTH.....129 ft.
FORD.....37.59 sec.	CHEVROLET.....133 ft.
ECONOMY RUN	GO-STOP-PARK
PLYMOUTH.....18.77 mpg.	PLYMOUTH.....2:32 min.
CHEVROLET.....17.04 mpg.	FORD.....2:44 min.
FORD.....16.14 mpg.	CHEVROLET.....2:57 min.
HILL CLIMB	3/4-MILE CLASSIC
CHEVROLET.....15.00 sec.	PLYMOUTH.....2:51.74 min.
PLYMOUTH.....15.44 sec.	CHEVROLET.....2:55.67 min.
FORD.....*16.00 sec.	FORD.....3:04.89 min.

*Incomplete third heat

See your dealer for full details



*Your Authorized Plymouth-Valiant Dealer's Warranty against defects in material and workmanship on 1963 cars has been expanded to include parts replacement or repair, without charge for required parts or labor, for 5 years or 50,000 miles, whichever comes first, on the engine block, head and internal parts; transmission case and internal parts (excluding manual clutch); torque converter, drive shaft, universal joints (excluding dust covers); rear axle and differentials; and rear wheel bearings, provided the vehicle has been serviced at reasonable intervals according to the Plymouth-Valiant Certified Car Care schedule.

PLYMOUTH DIVISION

