



By **BUD MAYBAUM**
Southern Michigan
Bridge Association

At the recent master point tournament at the Birmingham Community House, there were many unusual hands. I cannot remember an evening where there were so many hands that were void in a suit.

These are the hands in which the experts excel.

Betty Pope, with Dr. Barron, both of Birmingham, played today's hand. They not only arrived at the best contract, but Betty played this hand like the expert she is.

Both vulnerable South is dealer.

NORTH
♠ K 9 4
♥ A K J 6 5 4
♦ Q
♣ 10 7 3

WEST
♠ A J 8 7 6
♥ void
♦ K J 6 3 2
♣ A J 5

EAST
♠ void
♥ Q 9 8 7 3
♦ Q 9 8 6 2
♣ K 4

SOUTH (Betty Pope)
♠ 10 5 3 2
♥ 10 2
♦ A 10 9 4
♣ K 4

The bidding:
SOUTH WEST NORTH EAST
pass 1 ♠ 2 ♣ pass
2 NT pass 3 NT all pass
Opening lead: 2 ♣

Most North players fell in love with their heart holding and insisted on playing the hand in that suit. One North player arrived at four hearts and went down four tricks. However, Dr. Barron operated with Betty to arrive at this good contract.

The opening lead of the deuce of diamonds was won in the dummy with its singleton queen. Betty believed it best to make a presumed safety play in hearts and led the four of that suit. When East dropped the three, Betty won the trick with the ten.

West desired a club lead from East when East would be in with a West, decided to drop a spade on this trick.

BETTY NOW led a small spade from her hand and hooked the nine in dummy. She again got the bad news.

The third trick was the king of spades, which West won; he now played the king of diamonds. Betty let the king hold and West shifted to the jack of clubs. Betty had to win this trick with the king. She decided to squeeze West, led

her remaining heart and won two heart tricks in dummy.

West discarded her low club and a small diamond. The remaining spade was led from dummy and was won with the queen and a fourth spade led.

West could do no better than to win this trick, win the ace of clubs and be end played in the diamonds.

We can only conclude that this was a hand well bid and well played.

RECENT WINNERS in Birmingham tournaments in a club; Eleanor Haack and Helen Boothman; A. & B. Heck; Julius Milker and Rogalsky; Edwin V. Clarke and George Clarke; Ralph Tyson and Peg Main; Dottie Barron and Lullie Brunk; May Edgington and Jean Hough; Bud Drefus and Stan Wendig; Richard May and John Grant.

If you have made up your team for the knock-out team championship that starts the last week end in February, please notify Ed Clarke or myself. If you haven't made up a team, I'd suggest you do so as this will be a great match.

Winners of Flight A will receive a trip to a National and Regional Tournament and winners of Flight B will receive a portion of that expense.

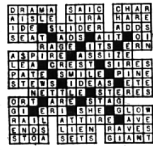
Merits

(Continued from S-1)

is "to give the best in terms of facilities and faculty," said Hilberry, "which means that we give the taxpayers all we can for their money."

The system enables the university to retain the faculty on a 12-month rather than a 9-month basis where possible. He described it as "an around the clock, year-round type of operation."

Answer To Puzzle 741



THE HAPPINESS MONEY CAN BUY! Secluded acre near The Kirk in Bloomfield Hills. Four bedrooms plus a 16 x 15 sitting room on 2nd floor. Library. Fireplace in living room. Draperies included at 29,900.

History

(Continued from S-D)

and Woodmere—now long gone from the map.

TO THE SOUTH, expansion was less rapid. Monroe became an interesting possibility but it was not until 1917 that the local municipal plant was offered for sale. Then Detroit Edison bought it and integrated it with the central system.

Port Huron, too, was subject to early negotiations but the existing municipal utility plants, including a gas-works, did not come into the Edison system until 1919.

Westward expansion of the Edison Company began with negotiations for the purchase of the Washtenaw Light and Power Company, which served the small communities of Ypsilanti and Ann Arbor.

Acquisition of this small system in 1905 was the beginning of a series of additions—all hydro-electric properties. These extended from the Barton Pond west of Ann Arbor along the Huron River east and south to French Landing in the Romulus-Belleville neighborhood.

DURING THE earlier years of Mr. Dow's presidency, the territory served by the company grew to include an area ranging from the St. Clair River on the east to near Lansing. Later, in 1935, acquisition of the Michigan Electric Power Company extended the system to include the Thumb from Port Huron northward. This completed the Southeastern Michigan service area as it stands today.

Dow, having kept his company strong in meeting power demands of the automotive industrial revolution and World War I, and having brought it securely through the Great Depression of the 1930's, retired in 1940.

Alfred C. Marshall, general manager of Detroit Edison, became president that year. He fell to heavy responsibilities imposed by World War II. These included meeting extremely heavy industrial power demands as well as coping with power equipment priority problems. He retired in 1944.

James W. Parker, vice-president and general manager, was elected as Detroit Edison's next president. As a nationally-known authority in the electrical engineering field, he was particularly well-qualified to deal with the still-critical wartime situation.

WHEN THE war ended, Parker was convinced that a general economic pessimism which pervaded Detroit and the nation was without foundation. In action reminiscent of his predecessor, Dow, he proposed and launched expansion projects without which the booming post-war and Korean conflict demands could never have been met.

Also in 1944, former U. S. Sena-

tor Prentiss M. Brown came to Detroit Edison in the newly-created position of chairman of the board of directors. Senator Brown, a distinguished lawyer and former chief of the U. S. Office of Price Administration, applied his experience to the company's problems of expansion financing, business policy and civic and governmental relations. He retired in 1954.

Walker L. Cislner, president of Detroit Edison since 1951, was elected to that office upon Mr. Parker's retirement. As an Eisenhower staff officer in World War II, Mr. Cislner gained international reputation for his leadership in restoring shattered power facilities. Since that time, he has been active throughout the Free World in U. S. Government efforts to establish or improve overseas power systems as a measure of economic aid to friendly nations abroad.

DURING HIS tenure as Detroit Edison's chief executive officer, he has guided the company in a program which doubled power production and distribution facilities within a ten-year period.

Under Mr. Cislner's administration, the Edison story is still unfolding. Long-range plans reach as far as 20 years ahead. Larger generators, transmission lines of twice the present maximum voltage, and the probable utilization of atomic electric power plants are among the factors of a future in which Detroit Edison looks forward to another sixty years of service in Southeastern Michigan.

Now you can RENT REYNOLDS SOFT WATER

the carefree way!

Now for the first time, you can RENT a famous multi-purpose REYNOLDS Fully-Automated, Heavy-Duty Water Conditioner... the softener that removes iron and manganese...

REYNOLDS Water Conditioning Company

Michigan's oldest and largest water conditioning company... since 1925
12338 Coviadale, Detroit 4, Mich. WChater 9-5889

Dates for the membership subscription campaign of the South Oakland Community Concerts Association and two attractions for next year's concert season were upon as "hold dates" were "The pianist."

Members of the organization's board from Birmingham are Mrs. Herbert H. Gardner, Mrs. Walter Ruffer and Mrs. Richard O. Ruppel.

Try an Eccentric Want Ad!



See the Stately "Fox Chase" This Week

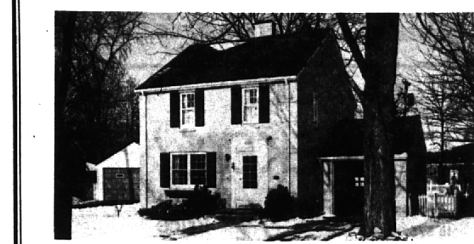
- Gracious living room with windows on three sides
- Spacious 19' long antique birch paneled family room with acoustic ceiling, wood-burning fireplace and insulated glass door wall
- Separate formal dining room
- 1963 "idea" kitchen with furniture-like provincial spicewood cabinets and built-ins, including automatic dishwasher
- Two baths on second floor (one is a compartmented family bath with dual vanity)
- Large daylighted king-size family breakfast area
- First floor step-saving in-line utility room directly off the kitchen
- Four full size bedrooms, including breath-taking 24' 9" master bedroom
- Attractive powder room conveniently located off first floor foyer
- Two-car attached garage with inside entrance directly into utility room for convenience and comfort

\$32,900 on half-acre lot.

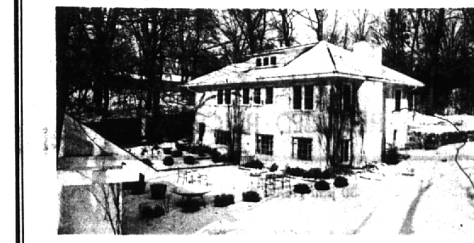
... in HICKORY HEIGHTS
PRIDE OF THE BIRMINGHAM-BLOOMFIELD AREA

MODEL AND SALES OFFICE PHONE: Midwest 4-8920

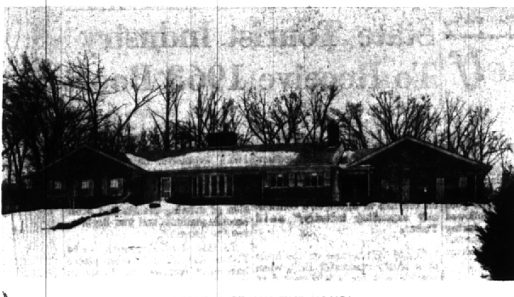
Proudly Built and Sold by **ROBERTSON BROS. CO.**
4330 N. Woodward, Royal Oak
Liberty 9-3500



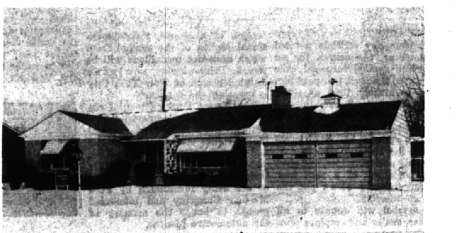
MAKE AN APPOINTMENT TO SEE THIS BEVERLY HILLS HOME—You'll Love it! Three bedrooms, large living room with fireplace in paneled wall. Screened porch and recreation room with floor tiled.



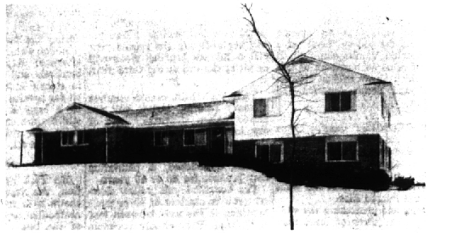
THE HAPPINESS MONEY CAN BUY! Secluded acre near The Kirk in Bloomfield Hills. Four bedrooms plus a 16 x 15 sitting room on 2nd floor. Library. Fireplace in living room. Draperies included at 29,900.



HERE'S A REALLY FINE HOME!
Bloomfield Hills Bi-Level on Lone Pine opposite Cranbrook. Four bedrooms, three bathrooms. Library, family room, recreation room, greenhouse—Everything! Custom built, you must see it!



"YOU CAN EAT OFF THE FLOOR—IT'S SO CLEAN!" Three bedrooms, Two baths. Paned recreation room with bar. Jalousied porch. Carpeting and draperies. Easy financing. \$26,900.



FAMILY FUN AND LIVELY GET TOGETHERS—in the great family room (24.6 x 17.9). Three bedrooms with space on lower level for a fourth. 2½ baths, separate dining room and screened porch. Magnificent kitchen with built-ins. \$35,900.

Weir, Manuel & Snyder, Inc.

298 South Woodward Birmingham, Michigan Realtors
Phones: Birmingham 644-6300 From Detroit 566-2323