

Cultural Events

(Continued from 1-D)

academy's galleries through Feb. 3 daily except Mondays from 2 to 5 p.m.

BIRMINGHAM THEATER—Double feature: "The Chapman Report," starring Shelly Winters and Jane Fonda, and "Only Two Can Play," starring Peter Sellers.

BLOOMFIELD THEATER—"Manchurian Candidate," with Frank Sinatra, Laurence Harvey, Janet Leigh, and "Pressure Point," starring Bobby Darin.

TRAVELOG—Phil Walker shows the film "Here is Switzerland" at 8 p.m. in the Birmingham Community House. Open to public.

BLOOMFIELD ART ASSOCIATION—Lecture and movies on Italian art at the Birmingham Art Center, 1516 S. Cranbrook Road, beginning at 8 p.m. Open to public.

TOWN HALL—Richard Rush, banker, economist, author and art collector, will talk on "Art as an Investment" at the Birmingham Theater at 11 a.m.

TRAVELOG—Phil Walker shows the film "Here is Switzerland" at 8 p.m. in the Birmingham Community House. Open to public.

B'WANA DON SHOW—B'wana Don Show at the Birmingham Community House at 1:30 p.m. Open to public.

BRIDGE—Duplicate Bridge at the Birmingham Community House at 7:45 p.m. Open to public.

BRIDGE—Tuesday Birmingham Duplicate at 2424 Manchester, Birmingham, beginning at 1 p.m. Open to public.

BRIDGE—Birmingham-Bloomfield Area Bridge Club at the YMCA, 400 E. Lincoln, Birmingham, at 7:45 p.m. Open to public.

BLOOMFIELD THEATER—Begin showing of "West Side Story" at the Bloomfield Theater.

VILLAGE WOMAN'S CLUB—Third of eight "History in the Making" lectures at the Village Woman's Club, E. Long Lake Road, Bloomfield Hills from 9:30 to 11:15 a.m. Harm de Blij from Michigan State University will be the speaker. Open to public.

BRIDGE—Birmingham Duplicate Bridge at the YMCA, 400 E. Lincoln, Birmingham, beginning at 7:45 p.m.

CONCERT—As part of the MSUO Community Arts Council concert-lecture series, the Detroit Arts String and Percussion Ensemble will perform in the Oakland Center on the MSUO campus at 8:15 p.m. Open to the public.

FILM—The Southfield Film Society presents the Russian film "Ballad of a Soldier" at 8 p.m. in the Northwestern Unitarian-Universalist Church, 3295 Northwestern Highway. Admission by membership card. A panel discussion will follow.

BRIDGE—Duplicate Bridge at the Community House beginning at 7:45 p.m. Open to public.

BRIDGE—Tuesday Birmingham Duplicate at 2424 Manchester, Birmingham, beginning at 1 p.m. Open to public.

BRIDGE—Birmingham-Bloomfield Area Bridge Club at the YMCA, 400 E. Lincoln, Birmingham, beginning at 7:45 p.m. Open to public.

VILLAGE WOMAN'S CLUB—Fourth of eight "History in the Making" lectures at the Village Woman's Club, E. Long Lake Road, Bloomfield Hills, from 9:30 to 11:15 a.m. Harm de Blij from Michigan State University will be the speaker.

BRIDGE—Birmingham Duplicate at the Birmingham YMCA, 400 E. Lincoln, beginning at 7:45 p.m. Open to public.

BRIDGE in BIRMINGHAM

By **BUD MAYBAUM**
Southern Michigan Bridge Association

Mary Malchie, who I believe is the first woman life master from this area and is a usual player in the Birmingham tournaments, teamed up with Norma Keller, secretary of the Southern Michigan Bridge Association, to play today's hand. It is a good example and well executed, unusual to trump bid.

Many play the "unusual no trump" for minors only, but today's hand explains why it should be played for the unbid suits.

NORTH
(Mary Malchie)
♠ 7
♥ J10865
♦ Q
♣ Q108764

WEST **EAST**
♠ Q3 ♠ J1096
♥ K2 ♥ A Q
♦ A K J1052 ♦ 9 8 3
♣ A95 ♣ K J 3 2

SOUTH
(Norma Keller)
♠ A K 5 4 2
♥ 9 7 4 3
♦ 7 6 4
♣ void

East and West Vulnerable. Dealer is West.

The bidding:
West North East South
1 ♠ pass 1 ♠ pass
3 ♠ 3 NT Doie 4 ♠
Doie all pass.

Opening lead: ♠ Q

One cannot complain about East's bid of one spade, but I do prefer a two no trump in this position. True, the hand is a bit short on point count for this bid, but the holding of East makes this a smart bid.

When Mary made her unusual no trump bid on the second round, they won the board. Under the circumstances Norma had no other bid but four hearts.

The queen of spades lead allowed Norma to discard her singleton diamond on the other top spade by South. After cross-ruffing three diamonds and three clubs, Norman led a third spade from the closed hand.

West went up with the king of hearts and led a fourth diamond, allowing her to make nine tricks, down one for a loss of one hundred points.

Had East and West found their right contract of three no trump, they would have gained 600 or even 600 points in a five diamond contract.

RECENT WINNERS in Birmingham tournaments include Rene Ross and Ann Haskin; Mary Malchie and Norma Keller; Arlene Heck and Burton Heck; Esther Clarke and Bernice Dawson; Ollie Swarzwald and Jerry Cooper, Dr. and Mrs. G. Walker; Louise and Ira Benjamin; Dorothy and Charles Thumser; Goldie Beale and Hilda Murphy.

Even your author is very proud to announce that he has received his Gold Card from the American Contract Bridge League designating him a life master.

AS A POINT of information, for you who like master point games, Ed Clarke's game is each Wednesday night at the Birmingham Y.M.C.A. and his master point game is the third Wednesday of each month.

Kay Clinton holds her game each

Monday night at the Birmingham Community House and her master point game is the first Monday of each month.

Hilda Murphy has her games each Tuesday afternoon at her home at 2424 Manchester and her Thursday night game at the Birmingham Y.M.C.A. Her master point games are the second Tues-

Board To Meet Foreign Students

The Detroit Metropolitan Board of the American Field Service met at 11:00 a.m. Tuesday in the Lowell Court home of the chairman, Mrs. A. O. Thalacker.

Plans were completed for Saturday's AFS Open House, also at Mrs. Thalacker's home, where the board will meet foreign students

and second Thursday of each month.

You are welcome at any of these games.

Time also to remind you to pay your 1963 Dues to the Southern Michigan Bridge Association. You may pay your dues or join at any of the above Bridge Clubs.

and their American parents from throughout Michigan.

The current slate of officers on the board are as follows:

Honorary chairmen, Mrs. George Romney and Mrs. Alfred G. Wilson; chairman, Mrs. A. O. Thalacker, Bloomfield Hills; vice president, Mrs. John Mann, Royal Oak; recording secretary, Mrs. Harry Taylor, Wyandotte; corresponding secretary, Mrs. Conrad Lam, Farmington; treasurer, Mrs. Charles McFeeley, Grosse Pointe; and publicity, Mrs. John Bagby, Birmingham.

Getting ready to sell your car? Advertise it in the Classified Ads.

DEVELOPERS OF
Colonial Communities
CONCORD GREEN
EAST GREENWICH GREEN
WEST GREENWICH GREEN
NOW—METAMORA GREEN—
Wm. J. PULTE, Inc.
MASTER BUILDERS
BIRMINGHAM
MI. 6-0105
PULTE - BUILT - MEANS - BETTER - BUILT

A W O L A WORLD OF LIVING . . .

In this Lovely Brick Ranch home in Westchester Village

1. Large living room—Dining Ell
2. Family Room—Built-in Bar-b-que
3. Four excellent bedrooms—plenty of closets
4. 2½ baths
5. Full basement divided for recreation room and utility
6. Built-in range, oven and dishwasher
7. Carpets and draperies
8. 2½ car attached garage — maximum storage
9. Prime location. Walking distance to St. Regis and Birmingham schools. A neighborhood you will enjoy.

SEE IT SOON!
ALL FOR ONLY \$33,500!



2669 Heathfield

Lighting your way to better living

BENJAMIN & BISHOP, INC. REALTORS

259 S. Woodward, Birmingham, Michigan MI 4-3232 — JO 4-5728

PICK YOUR TYPE

City Colonial

Large Living room with fireplace—Separate Dining room.
1st Floor Family room with fireplace—Library too!
3 Bedrooms (good-sized); 2½ Baths.
Kitchen with built-in oven, stove, dishwasher.
Full dry Basement. 2½-car garage.
Carpeting throughout. Fenced yard.
Short walk to Schools.
PERFECT FAMILY HOME for \$36,000.



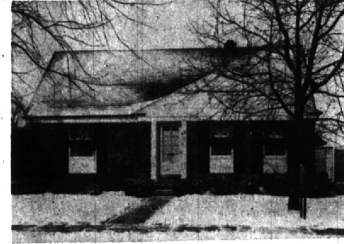
Country Acre

Over an acre near Gilbert Lake with lovely trees & shrubs.
4 BEDROOMS, 2½ Baths. FULL BASEMENT, tiled floor.
Living room with fireplace—Separate Dining room.
1st Floor Family room with fireplace. Library.
2½-car plastered Garage with electric doors.
Carpeting and Draperies.
Vaughan and Bloomfield Hills Schools.
Wonderful Country Living!
Price reduced to \$39,900.



City Ranch

On lovely Larchlea—you can see the beautiful trees. Excellent location. Living room with fireplace. Dining room. Porch. 3 Bedrooms, 2 full Baths. Full Basement. Fruit cellar. Brand new carpeting. Most attractive home! REAL VALUE at \$25,900.
1 Block to Midvale & Seaholm Schools.



Newlyweds or Retired

Brick Ranch with full Basement AND OUTSTANDING RECREATION ROOM, including Bar, water, paneling. 2 Bedrooms, 1½ Baths. 2nd floor easily finished into 3rd large Bedroom as heat ducts are in. Pretty fenced yard. Walk to School, Shops & Detroit bus.
LESS THAN \$1,000 DOWN WILL BUY!

Wherever
You
Want
To Live
SEE US
We Are



affiliated with the largest inter-continental referral system in the entire United States. Reputable — Reliable — Resourceful American Institute of Marketing Systems, Inc.

SNYDER KINNEY & BENNETT
INC.
Realtors

239 S. Woodward, Birmingham MI 4-7000 32740 Franklin, Franklin MA 6-9600

david k. falvay and
hugh c. white
Insurance Agency

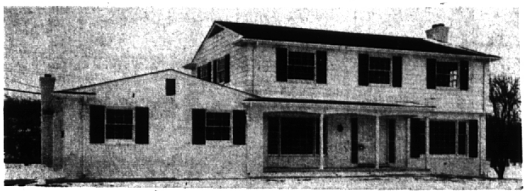
- life
- C. L. U.
- fire
- automobile
- casualty
- home owners
- package
- policies
- hospitalization



COMPLETE
INSURANCE
PROGRAMS
ARRANGED

217 pierce st., birmingham
midwest 4-7803 and mi 4-3610

CUSTOM COLONIAL



CONSIDER YOUR HOME IN TRADE

Instead of a production home, TOP QUALITY plus every conceivable extra. 2700 square feet, 4 bedrooms, 2½ baths, gorgeous family room with plank and pegged floors and a second fireplace. Prestige area near Birmingham. Bloomfield Hills Schools. High lot, trees, sewers. \$43,250.00. Ask for Alice Rutten.

CHARLES J.
VAN HORN

MI 6-2400

JO 4-5644