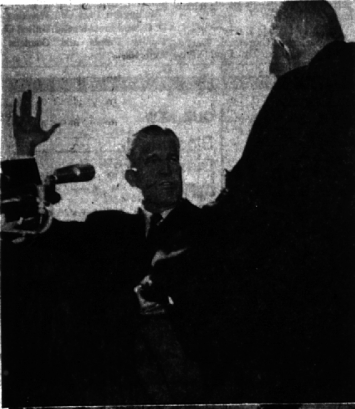


# Throngs Jam Lansing for Romney Inaugural

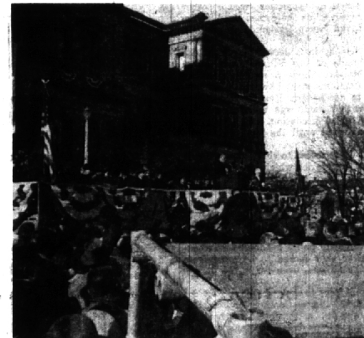
# Michigan Traffic Toll Reaches All-Time High



Michigan Chief Justice Leland W. Carr (left) administered the oath of office Tuesday as Bloomfield Hill's George W. Romney became the state's first Republican governor in 14 years. The mid-day oaths of office were administered not only to Romney but also to Democrats who will sit on the state administrative board. The busy day was climaxed as the Romney family (right) led the grand march at the inaugural ball in the Lansing Civic Center. Leading the march (from left) were Romney's son, Mitt, 15, his daughter, Mrs. Bruce (Jane) Robinson, Romney, Mrs. Lenore Romney and governor's brother, G. Maurice Romney of Salt Lake City, Utah. In the background is the governor's other daughter and her husband, Mr. and Mrs. Loren Keenan, 2694 Brady, Bloomfield Hills.



Left: The state's new first family greets the thousands who flocked to the state capitol to witness the inauguration on New Year's day. The spectators braved 18-degree weather to hear the governor's speech. Right: Romney went to great lengths in his address to discourage excessive partisanship and interparty feuding. He said that he believed strongly in the two party system but there was a need to search for unity and understanding. The speech, given on the capitol steps, was interrupted 15 times by applause.



Although Michigan provisional 1962 traffic death toll of 1,599 was 118 in 1964. December's average four less than 1,563 in 1961, delayed reports will raise the count. More complete figures for November showed 132 killed and 9,194 injured in 19,205 accidents. This was a decrease of 16, or 11 per cent, in deaths but increases of 1,220, or 15 per cent, in injuries, and 2,261, or 13 per cent, in accidents through the first 11 months of the year, the latest information available, but those Michigan's accumulated record totals exceeded the previous high marks of 91,026 injured and 209,724 deaths established for the full year of 1961.

December's provisional death toll of 92 was 48, or 34 per cent, fewer than 140 in the same month a year ago. This was the lowest peacetime record since record-keeping began in 1935, and the only lower mark for the month was 79 in wartime 1942 when there was gas rationing and fewer persons motoring.

The previous peacetime low was 118 in 1954. December's average over the past 29 years was 153. November showed 132 killed and 9,194 injured in 19,205 accidents. This was a decrease of 16, or 11 per cent, in deaths but increases of 1,220, or 15 per cent, in injuries, and 2,261, or 13 per cent, in accidents through the first 11 months of the year, the latest information available, but those Michigan's accumulated record totals exceeded the previous high marks of 91,026 injured and 209,724 deaths established for the full year of 1961.

December's provisional death toll of 92 was 48, or 34 per cent, fewer than 140 in the same month a year ago. This was the lowest peacetime record since record-keeping began in 1935, and the only lower mark for the month was 79 in wartime 1942 when there was gas rationing and fewer persons motoring.

Estimated mileage for the first 10 months, the latest information available, totaled 27.5 billion, an increase of four per cent compared with the same period in 1961, while the death rate of 4.8 per 100 million vehicle miles was unchanged.

**'63... good year for CAPITAL GAINS?**

Statisticians and analysts across the nation appear optimistic about market growth in 1963. BUT... the purchase of growth issues for capital gains will require selective judgement. 1963 will be a year of more careful buying and selling... a year requiring professional portfolio development.

Whatever your investment objectives, a First of Michigan representative can help you to plan a sound investment program based on research and analysis. Stop in soon.

**FIRST OF MICHIGAN CORPORATION**  
Members New York Stock Exchange  
Wabeek Building  
Birmingham, Mich. • MI 7-1400

LISTED & UNLISTED SECURITIES - BONDS - MUTUAL FUNDS - CORPORATE AND INDIVIDUAL - MUNICIPAL FINANCING - ACQUISITIONS & MERGERS - NEW ISSUES - SECURITY APPRAISALS

## NATIONAL BANK OF DETROIT



Statement of Condition, December 31, 1962

### RESOURCES

Cash and Due from Banks . . . . .	\$ 535,591,438.07
United States Government Securities . . . . .	632,009,023.74
Other Securities . . . . .	282,059,375.67
Loans:	
Loans and Discounts . . . . .	\$703,988,550.16
Real Estate Mortgages . . . . .	902,995,807.35
Federal Reserve Bank Stock . . . . .	4,500,000.00
Bank Premises . . . . .	18,263,400.16
Customers' Liability on Acceptances and Credits . . . . .	7,222,450.83
Accrued Income and Other Resources . . . . .	12,768,337.43
	<b>\$2,395,409,833.25</b>

### LIABILITIES AND CAPITAL

Commercial Deposits . . . . .	\$1,081,248,861.94
Savings and Time Deposits . . . . .	640,531,149.72
Deposits of United States Government . . . . .	140,954,832.69
Other Public Deposits . . . . .	124,817,097.98
Deposits of Banks . . . . .	191,225,999.48
Total Deposits . . . . .	\$2,178,777,741.81
Acceptances and Letters of Credit . . . . .	7,222,450.83
Accrued Expenses and Other Liabilities . . . . .	28,823,671.22
Capital Fund:	
Common Stock (\$12.50 par value) . . . . .	\$ 45,000,000.00
Surplus . . . . .	105,000,000.00
Undivided Profits . . . . .	30,586,069.39
	<b>\$180,586,069.39</b>
	<b>\$2,395,409,833.25</b>

United States Government Securities carried at \$273,220,952.89 in the foregoing statement are pledged to secure public deposits, including deposits of \$10,000,000.00 of the Treasurer, State of Michigan, and for other purposes required by law.

Member Federal Deposit Insurance Corporation



72 offices providing exceptional banking and trust services throughout Detroit and neighboring communities

### BOARD OF DIRECTORS

- A. H. AYMOND, JR. Chairman—Consumers Power Company
- HOWARD C. BALDWIN Partner—Baldwin, Boos & Baldwin
- HENRY T. BODMAN President
- PRENTISS M. BROWN Director—The Detroit Edison Company
- M. A. CUDIP President and Treasurer—McLouth Steel Corporation
- HARRY E. CUNNINGHAM President—S. S. Kresge Company
- WILLIAM M. DAY President—The Michigan Bell Telephone Company
- LELAND I. DOAN Chairman, Executive Committee and Director—The Dow Chemical Company
- RAY R. EPPERT President—Burroughs Corporation
- MALCOLM P. FERGUSON President—Bendix Corporation
- EDWARD F. FISHER Director—General Motors Corporation
- EVERETT E. FISHER Director—Fisher and Company, Inc.
- JOHN B. FORD Director—Wyandotte Chemicals Corporation
- JOSEPH L. HUDSON, JR. President—The J. L. Hudson Company
- RALPH T. McLENNY President—American Natural Gas Company
- JOHN N. MCLUCAS
- THOMAS E. MILLSOP Chairman—National Steel Corporation
- F. W. MISCH Vice President—Finance and Director—Chrysler Corporation
- PETER J. MONAGHAN Partner—Monaghan & Monaghan & Co.
- GEORGE E. PARKER, JR. Executive Vice President
- ROBERT B. SEMPLE President—Wyandotte Chemicals Corporation
- NATE S. SHAPERO Chairman—Cunningham Drug Stores, Inc.
- R. PERRY SHORTS Chairman—Second National Bank of Saginaw, Michigan
- DONALD F. VALLEY Chairman of the Board



Miss America steps out in Style

... in her Official Car ...

## '63 OLDSMOBILE

Poise... beauty... glamor. Jacquelyn Jeanne Mayer, Miss America for 1963, possesses them all. And her official car—the magnificent new Oldsmobile—complements her qualifications to perfection. Oldsmobile's crisp, sculptured lines... meticulous detailing... and uncompromising quality make it the ideal choice for so charming a queen. Just as it is among discerning people all over America. Stop in at your nearby Oldsmobile Quality Dealer's and find out why... today!

There's **SOMETHING EXTRA** about owning an OLDSMOBILE!

VISIT YOUR LOCAL AUTHORIZED OLDSMOBILE QUALITY DEALER

**SUBURBAN MOTORS CO., INC., 565 S. WOODWARD AVE., B'HAM, MICH.**

LOOKING FOR A GOOD USED CAR? LOOK FOR THE "VALUE-RATED" SIGN AT YOUR OLDS DEALER'S!