

Automobile Club Outlines 4 Main Routes to Florida

Well over 400,000 Michigan motorists will drive to Florida during the coming year despite the Cuban embargo, the Automobile Club of Michigan has forecast.

"We believe that from eight to 10 per cent more Michigan motorists will drive to Florida in 1963 than did in 1962, when 375,000 of them made the motor trip," said Jerry E. Fisher, Auto Club touring manager.

The bulk of them will utilize the two western-most routes between Michigan and the Sunshine State, said Fisher, because it offers almost complete freedom from mountains.

Route number one on the accompanying map, taking motorists through Nashville, Birmingham and Tallahassee, offers a route that, while a hundred miles longer than two others, is faster, thus bringing driving time to the same 40-hours behind the wheel.

It utilizes 816 miles of four-lane highways and turnpikes, accounting for the ease of driving and high acceptance by drivers.

The second most popular route is marked with route number two on the map. It takes a course through Lexington, Knoxville, Atlanta and Ocala, on its way to Miami, utilizing but 659 miles of four-lane or better highway.

THE OTHER two routes, mountainous in sections, are quite popular during spring and fall, when they are snow-free and colorful.

Comparative figures on the four principal routes from Michigan to Florida are:

Route to Miami via: Total Mileage, Four-Lane and Turnpike Miles

#1 (Nashville) 1,579 816

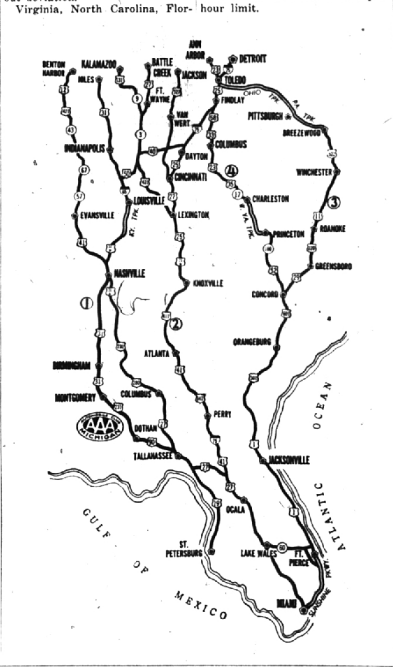
#2 (Knoxville) 1,468 659

#3 (Columbus) 1,596 911

#4 (Pittsburgh) 1,428 575

Motorists heading to Florida in 1963 will find little change in rates for accommodations over last year, although there are minor variations, up or down, in different sections. An auto club survey shows that accommodations enroute to Florida are up slightly.

While speed traps and areas of overzealous enforcement are being eliminated in Kentucky, Georgia and Florida, motorists will do well to observe local speed limits without deviation. Virginia, North Carolina, Florida and Georgia enforce speed limits strictly, and Florida is particularly vigilant about school zones, where motorists are likely to be ticketed for driving only a mile or two over the 15-mile-per-hour limit.



6-D THE BIRMINGHAM (MICH.) ECCENTRIC January 3, 1963

NATURE NOW

By Lydia King Frehse
Special Writer for The Birmingham Eccentric

Complexity Marks Division Between Flora and Fauna

If you are alive you are either a plant or an animal. From its early beginnings the stream of life divided itself into these two great channels and has since so continued on its dual way.

The difference between plants and animals is usually taken for granted. Anyone can tell a bird from the tree in which it nests. However, this conclusion is only valid with the relatively complex life-forms. One must be a trained biologist to distinguish between microscopic plants and animals.

AT LEAST one group, the slime molds, are on the border-line, reproducing by spores like plants and ingesting their food like animals.

Another great group, the viruses, are so small that they show the microscope and thus far defy placement in either group.

One basic difference between plants and animals is the way they obtain their food. Plants produce their own food from water and air by the action of chlorophyll.

Animals must depend on food already synthesized by plants.

ANIMALS EAT their food, while plants absorb it in water solutions through their cell surfaces. However, parasitic animals absorb predigested food from the blood stream or intestines of their hosts, while plants without chlorophyll, as the fungi, may be either parasites or saprophytes.

Plants are anchored to earth or sea bottom, while animals are free to move about. A plant can grow only where it can obtain its food. An animal must move about to get enough food for its energy requirements.

AGAIN THERE are exceptions among the more primitive orders. Sea animals like corals and sponges can live an anchored life because the water brings them a constantly available food supply. Such plants as microscopic algae are free moving, and many aquatic plants are moved about by the water's action.

This dependence upon locomotion is responsible for many other differences between the two major life-forms. Animals moving about must be able to cope with an ever-changing environment. To do this they gradually developed sense organs, nerves and brains.

Plants lack these highly specialized adaptations. However, they are not lacking in adaptive powers, since they are sensitive to gravity, pressure and light.

BOTH PLANTS and animals breathe. The great quantity of carbon dioxide released by animals is removed from the atmosphere by plants as a necessary ingredient for food production.

The growth process in plants varies within wider limits and is more dependent upon environmental conditions than that of animals. A man has a certain life-span, while a sequoia tree is potentially capable of growing on for an indefinite time.

THE REPRODUCTIVE process, essentially the same in primitive aquatic plants and animals, has followed two diverse lines to adapt itself to life on land. Each group employs both the asexual and the sexual method.

In the former, the offspring is derived from a single parent, either by budding or by simple division. In the latter, a new life results from the union of an egg and sperm usually contributed by two parents.

Sometimes, however, both sexes reside in one individual, as in the snail. Among such spore-bearing plants as ferns and mosses the sexual and asexual generations alternate.

GENERALLY speaking, as the species become more complex the differences between plants and animals increase. However, with all its variations life yet presents a continuum, a diverse manifestation of the process of living protoplasm from one individual to another.

Kindergarten was so named by its founder, Friedrich Froebel, to express his idea of the school as a garden in which children are comparable to unfolding plants. Froebel began the first kindergarten in 1837, making use of plays, games and songs to illustrate his belief that a child should learn by doing rather than by merely reading.

A smart man is the one who saves all gossip he knows until after dinner so his wife will help him with the dishes.

Another thing so easy a child can operate it is a grandparent.

A pessimist thinks that even the game of life is fixed.

It is said that one can either live within his income or have a little fun now and then.

BIRMINGHAM FINANCE CO.
114 S. Woodward
Room 1, Second Floor
Quick, Friendly Service
LOANS \$25 to \$500
MI 6-3350

CUSTOM DRAPERIES
by
Mary Elizabeth
FREE ESTIMATES
My home studio saves YOU money on quality fabrics, rods and carpeting.
CHECK OTHER prices, then CALL
MA 4-3266

Closing Out
CHILDREN'S CLOTHING
Everything Must Go!
BOYS GIRLS
1/2 OFF
AND MORE!
Alice's WONDERLAND
595 E. Maple MI 6-1113
(Next to Englander's)

Another Report from HOPE

Pharmacist, Storekeeper Explain Their Tasks

EDITOR'S NOTE: Lee-Oliver Harrison, daughter of Mr. and Mrs. C. A. Harrison, formerly of Birmingham, is serving aboard the goodwill ship S. S. HOPE. This is one of a series of dispatches she is sending. The Eccentric explaining the work of the project ship.

This month's article comes to you from our pharmacist, Margaret Sherwood, and our chief storekeeper, Larry DeBelius. Miss Sherwood is a native of Letonia, O., and is on leave of absence from St. Luke's Hospital in Cleveland, O. DeBelius is an elementary school teacher from Victorville, Calif.

DOWN TO EARTH Notice Christmas Lighting Effects

By ALICE WESSELS BURLINGAME
Special Writer for The Birmingham Eccentric

It isn't too late for you to make a tour around town, observe Christmas lighting effects and decide how you will decorate your home another year.

Make notes on the ideas you like and when Dec. 1 comes next year you will have half of the decorating job done.

Haven't you noticed that when the large outside bulbs are used on an evergreen the best effect is achieved when one color of bulb is used on an entire tree? If you decide to use the Italian type of bulb to decorate an ornamental tree in your front yard, then be prepared to invest in one thousand lights for a 20 foot tree.

THE MOST economical way to have a maximum effect is to hang a wreath or one of your own creations either at the front door or on an exterior door and spotlight it from a distance of 10 to 20 feet. (The Detroit Edison Co. pointed out to us that a local Mrs. Burlingame lecture that an amber light is very pleasing.)

In planning these extravaganzas of light outside we must remember that we should not load one circuit for more than 1725 watts.

If your outlet on the outside ties in with other lighting in an inside room, you have to add the watts used to the count for your inside fixtures.

Be sure not to change the fuse load at any time for one particular outlet to accommodate you as these limitations are placed as a safety factor. It does matter when

how much of an item is still on hand. This necessitates a record of each item it is issued. Paper work? Yes, lots of it, but all essential!

"With me are two Peruvian trainees who are learning the procedures involved in running a hospital store room and in the issuing and delivery of needed articles to various departments of a hospital. Experience and instructions are being given these young men as preparation for work in a hospital

in their country when the ship leaves.

Men training in hospital administration also spend time in this department, becoming familiar with the operations and functions of this vital organ of the hospital.

Next Miss Sherwood describes work in the HOPE pharmacy: "The activity of the hospital pharmacist aboard the S. S. HOPE begins six weeks before the ship leaves the U. S. for a specific port of call. During this time an inventory of drugs and supplies is taken and posted. The bulk drug items are in 'holds', or large storage areas located on a lower deck level in the five watertight ship's compartments.

"The hospital area is also covered for single unit drug items which are returned to the pharmacy.

"Next the working stock in the pharmacy proper is inventoried and posted. All drug packages are checked for expiration dates and deterioration.

"IT WAS decided that the bulk of new supplies would be stored in hold 2. Therefore all supplies from Voyage 1 in hold 2 were transferred to hold 4, where the main issue is located.

"The bulk of new supplies were shipped by the manufacturer to the Navy Warehouse in Oakland, Calif. and palletized previous to our arrival.

"A written plan first is prepared whereby it is decided what supplies are to be stored in each of the five specific holds. Previous plans established that medical supplies should be stored in holds 2 and 4.

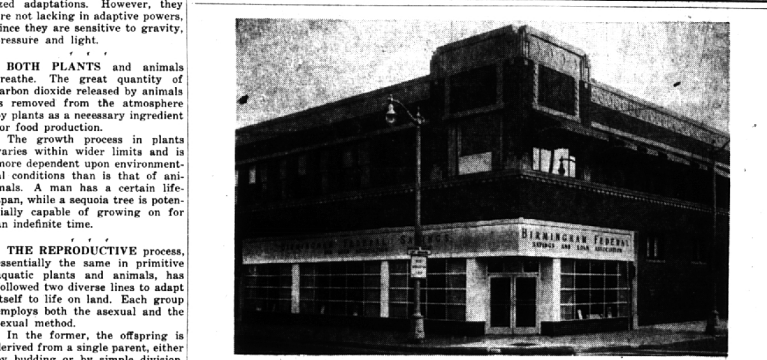
"CARTONS were marked in Oakland, transferred by truck to the dock and the ship was loaded by lowering the pallets into the hold. The stevedores placed the cartons on specific shelves as directed. Three people supervised this procedure which lasted about four to five days before sailing.

"Once at sea the pharmacy proper was cleaned, stocked and systematized. A ward stock of drugs was established, packaged, properly labeled and delivered to each ward.

"Formularies, donated by the American Society of Hospital Pharmacists Formulary Service, were marked and placed on each ward. This drug listing tells the physician which drugs are available.

"DRUGS requiring refrigeration were located in the food storage compartment. An issue supply of these drugs was transferred to small refrigerators and to the pharmacy.

"Drugs requiring government registration were personally picked (See HOPE, 5-D)



TODAY ... Is a Good Day to Take a Financial Inventory!

Exactly how much have you saved during 1962? If it's a good big figure don't bother with the rest of this. But—if the figure is embarrassingly small, wouldn't you be smart to open a savings account at Birmingham Federal Savings and add to the account regularly month in and month out.

If you follow this easy savings plan consistently, you will be happily surprised and pleased at the size of your savings account when you take another financial inventory at the end of the year.

Incidentally, why not start your account with a portion of the money you received for Christmas (bonus etc.)?

STRICTLY FRESH

A smart man is the one who saves all gossip he knows until after dinner so his wife will help him with the dishes.

Another thing so easy a child can operate it is a grandparent.

A pessimist thinks that even the game of life is fixed.

It is said that one can either live within his income or have a little fun now and then.

Birmingham FEDERAL SAVINGS

Compounded and Paid Quarterly

Each Savings Account Insured to \$10,000 by Federal Savings & Loan Insurance Corporation.

99 W. Maple
Corner of Pierce
MI 4-1711

Berkley
3055 W. 12 Mile Rd.
LI 5-7610

"Instituted for Local People . . . by Local People"