



Has Lead in 'Darling'

Playing the feminine lead in the St. Dunstan production of "Wake Up, Darling" will be Mrs. E. E. Wilson, 5380 Beach, Birmingham. The play will open the guild's season Oct. 26 at the group's playhouse on Lone Pine Road in Bloomfield Hills. Others in the cast are Lawrence M. Finn, James L. Schneider, Mrs. Maurice F. Smith, Mrs. Frederick C. Pew, Jack Sanders, Mrs. Charles Himelhoch, Tom Kelly, Sam Greenwald, Mrs. George Heidman and Mrs. Garvin Bawden. Other performances will be given Oct. 27 and Nov. 1, 2 and 3.

B'ham Residents Aid Institute Sale

A sale of art books, fine prints, print books, collectors' catalogues, sculpture reproductions and other crystal and pewter. A volunteer committee of over 60 Founders Society members will man the sale. Birmingham residents taking part in the sale are: Mrs. W. Calvin Patterson, 6155 E. Surry; Mrs. John Hays, 651 Ardmoor and Catherine Jackson, 1560 Dorchester.

BRIDGE in BIRMINGHAM

By **BUD MAYBAUM**
Southern Michigan
Bridge Association

With the opening of the fall season for bridge in Birmingham, Barbara Madvin, of this area, had her opportunity to display why she is generally included in the list of winners from the Birmingham area.

If you were present, you would certainly remember today's hand and the variety of results that were obtained. At some tables, it was played in hearts or spades by East; at other tables, it was played in Diamonds by North, anywhere from three to five diamonds. Others played this hand in clubs by South, but Barbara hit the jackpot. Neither vulnerable.

NORTH
▲ 5 3
♦ K 8 5 4
♥ Q 8 7 4 3 2
♠ void

WEST **EAST**
▲ A 8 ▲ J 10 9 7 4 2
♦ J 7 6 ♦ Q 10 9 3 2
♥ A 10 9 ♥ J
♠ K Q 10 7 4 ♠ J

SOUTH (dealer)
(Barbara Madvin)
▲ K Q 6
♦ A
♥ 6 5
♠ A 9 8 6 5 3 2

Opening lead: K
The bidding:
SOUTH WEST NORTH EAST
1 ♠ Dble 3 ♦ 3 ♠
3NT all pass

Barbara allowed the opening lead of the king of clubs to hold, but won the continuation of that suit. She now played the six of diamonds which West ducked and the closed hand won with the Queen. She returned to the closed hand with a heart and played another diamond, which West again ducked and a third round of diamonds cleared the suit.

West could now see nine tricks for Barbara and decided to switch to the ace of spades and the con-

tinuation of that suit. South won this spade trick and returned the nine of clubs. At this point, West could either allow the closed hand or North to win the remainder of the tricks. A top board for Barbara.

RECENT winners in the Birmingham area included Shirley Campbell and Dr. Harold Barron; Edwin V. and George Clarke; Mr. and Mrs. S. King; Mr. and Mrs. Cook; Robert Larson and Dr. D. Campbell; Dottie Barron and Lullie Brunk; Terry O'Hearn and Barbara Madvin; Bud Dreifus and S. Weadley; Charles Coffin Jr. and Charles Coffin Sr.

Be sure you don't miss the Southern Michigan Bridge Association sectional bridge tournament. For beginners, we will have championship games on Friday, Oct. 5 at 8 p.m. at the Elks Temple in Pontiac, games Saturday afternoon and evening at the Airway Lanes on M-59 in Pontiac and a limited team of four on Sunday evening.

THE MEN'S team and the woman's team will be held at the Elks Temple the evening of Oct. 4.

Birmingham Insurance Agency
114 S. Woodward

Representing:
AMERICAN GROUP
GENERAL—SAFE CO
HOME INS. OF NEW YORK
PRUDENTIAL
OHIO CASUALTY CO.
ST. PAUL GROUP
TRAVELERS

MI 4-2422
"After We Sell We Serve"

OSCAR P. PETERSON
BRUCE F. RANDALL
FRANK W. WHITSON

New Skillman Wing Opens at Cranbrook

The new three-story Skillman wing of Cranbrook Institute of Science, devoted primarily to exhibits of the physical sciences, opens to the public at 2 p.m. Saturday.

The third addition to the Institute since it opened in 1930 was made possible by a \$200,000 grant from the Skillman Foundation, plus a \$35,000 gift from Mrs. Robert H. Skillman of Bloomfield Hills, for equipment.

The 4,400 square feet of space at exhibition level provides three halls for illustrating the principles of physics—Newtonian, modern and the electromagnetic spectrum. The largest of the halls has a ceiling height of 14 feet and a special entry to allow large objects to be moved directly into the wing from outdoors.

Friday afternoon there will be a side game and an individual tournament and Friday evening a limited mixed pair and a championship mixed pair game.

All games on Friday and Thursday will be at the Elks Temple.

All games on the 5th and 6th will be at the Airway Lanes.

The open pair game will be Saturday afternoon and evening. The consolation game Saturday evening and Sunday afternoon will be the men's pair and women's pair. Hope to see you there.

ON THE basement level are rooms for physic shops, anthropological laboratory and storerooms, mineralogical collections and the lapidary shop. The herbarium is located on the upper level.

Several new exhibits, including the exciting "Tapa, Tribes and

BHAM ECCENTRIC Page
Thursday, Sept. 27, 1962 3-D

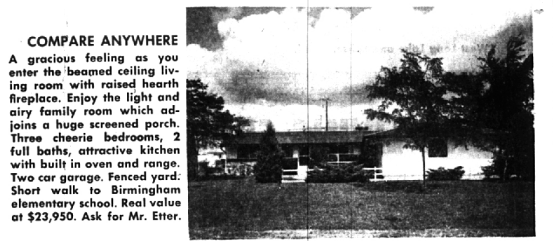
Trees", "The Ground Effect Machine" and "The World in Color", will also open on Saturday. Institute hours are 2-5 p.m. daily except holidays. There is an admission charge on weekends.

Americans give more than \$17 billion annually to churches, charity and the needy. The University of Michigan Survey Research Center estimates.

ELLIS INC. SINCE 1945
MODERNIZATION
Family—Activity—Recreation
Rooms & Porches a Specialty.
MI 6-4188
KITCHENS - BATHROOMS
ROOFING - SIDING
Most any alteration
and repairs
FREE ESTIMATES TERMS



ADAMS SCHOOL CONVENIENT
to this 4 bedroom home. Living room 25.10 x 12.6 Dining room 14 x 13. Kitchen has fan, disposal and dishwasher. Just \$17,900. About \$800.00 down to new FHA mortgage. Ask for Al Strom.



COMPARE ANYWHERE
A gracious feeling as you enter the beamed ceiling living room with raised hearth fireplace. Enjoy the light and airy family room which adjoins a huge screened porch. Three cheerful bedrooms, 2 full baths, attractive kitchen built in oven and range. Two car garage. Fenced yard. Short walk to Birmingham elementary school. Real value at \$23,950. Ask for Mr. Etter.

Berndt, Etter & Van Maaren, Inc.
Franchised Member
Of ARMS, National
Referral & Listing Service
REALTORS

360 Hamilton
MI 4-3500

MORE HOUSE FOR YOUR \$ \$ AT BROOCK

\$29,700



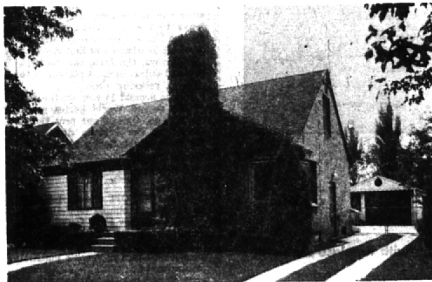
Charming isn't it? and you will find the interior even more inviting. Located in timeless Franklin Village, walking distance to stores this home has all random width maple floors, dutch doors front and rear, cedar closet, two huge bedrooms and studio or third bedroom. At \$29,700 it's an excellent value.

\$23,900



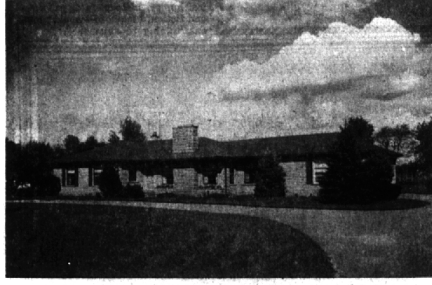
Top Value, is this Corporation owned home. The owner has already been transferred. Large Bedrooms, gracious living room with bay, full basement. The home is in excellent condition and is located in a fine West Beverly area. Birmingham schools. There is nothing comparable at \$23,900.

\$17,800



In Birmingham, walking distance to school, this lovely brick home has full basement, large fenced lot, 3 Bedrooms, paneled recreation room, and patio. Carpeting and many built ins included at \$17,800. Very low down payment on F.H.A. terms.

\$26,900



Here's a bargain! This Brick Rambler has three bedrooms, large living room, fine Family Room. Of fine construction, it's in the Birmingham school district, and can be bought with down payment of \$5,000. A fine home at \$26,900. Owner anxious, wants offers.

\$27,900



This distinguished Colonial home in Birmingham, has three lovely bedrooms, paneled library, fenced yard, lovely large living room. Built by Banwell, it's of excellent construction and the \$27,900 price includes carpeting.

\$23,900



Better than new, is this good sized Ranch and has a full basement, too. 3 Bedrooms, large living room, 2 full baths, tiled "rec" room and office in basement, sparkling kitchen has built in range and oven, finished garage. Carpeting and draperies included at \$23,900.

300 S. Woodward

MAX **BROOCK** INC.

— Since 1895 —

MI 4-6700