

Birmingham Architect to Design World Trade Center in Manhattan

Special to the Eccentric

New York. The selection of two architectural firms to design a great World Trade Center in lower Manhattan has been announced by S. Sloan Cobl, Chairman of The Port of New York Authority.

Minoru Yamasaki and Associates of Birmingham, Mich., was chosen as architects for the project, and Emery Roth & Sons of 550 Third Avenue, as associated architects.

The \$270,000,000 World Trade Center will occupy a 15-acre site bounded by West, Barclay, Church and Liberty streets. It will bring together for the first time in one location all the specialized activities and information needed for the efficient conduct of export-import business in this, the world's greatest port.

YAMASAKI'S achievements have received international recognition as outstanding examples of contemporary architecture. He has been awarded the First Honor Award of the American Institute of Architects three times—in 1956 for the St. Louis Airport Terminal, in 1958 for the McGregor Memorial Community Conference Center at Wayne State University, and in 1961 for the Reynolds Metal Company Regional Sales Office Building in Southfield. He also received, in 1957, the top design award of the Architectural Institute of Japan for his design of the United States Consulate General in Kobe.

Among Yamasaki's other architectural accomplishments are the United States Science Pavilion at the Seattle World's Fair; the Michigan Consolidated Gas Company Building in Detroit; and the Civil Air Terminal in Miami, Fla.

Mr. Yamasaki also designed the IBM Building in Seattle; the Synagogue for North Shore Illinois; the Northwestern National Life Insurance Building in Minneapolis; the Behavioral Sciences Building at Howard University; Pahlavi University in Shiraz, Iran;



MR. YAMASAKI

and the new Woodrow Wilson School of International Affairs to be built at Princeton University.

The noted architect called his World Trade Center Assignment "the most exciting thing we or anyone else in the architectural profession will have the opportunity of working on for a long time to come." He added:

"TO ME, the basic problem beyond the solving of the functional relationships of space is to find a beautiful solution of form and silhouette which fits into lower Manhattan and gives the World Trade Center the symbolic importance which it deserves and must have.

"In my opinion, this should not be an overall form which melts into the multi-towered landscape of lower Manhattan, but it should be unique, have extension of its own, and yet be respectful to the general area. The great scope of your project demands finding a way to scale it to the human being so that, rather than an overpowering group of buildings, it will be inviting, friendly and humane. Its great spaces need the excitement and delight of change of pace, of surprise, of interest, to avoid the danger of an overwhelming multiplicity of repeated modules.

"To be symbolic of its great purpose, of the working together in trade of the Nations of the World, it should have a sense of dignity and pride, and still stand for the humanity and democratic purposes in which we in the United States believe."

Emery Roth & Sons is one of New York's leading architectural concerns. The firm was founded in 1905 by the late Emery Roth who designed structures which have become New York landmarks. They include the Ritz Tower Hotel, the St. Moritz Hotel, the Fifth Avenue Hotel and the Hotel St. George.

SINCE THE end of World War II, Emery Roth & Sons has designed some 60 of Manhattan's most important buildings. Recent structures include the 43-story Sperry Rand Building at 1290 Avenue of the Americas; the 38-story office building at 80 Pine Street; the 24-story 750 Third Avenue building; the 32-story Pfizer Building at 235 East 42nd Street; the 28-story Bankers Trust Company Building at 280 Park Avenue; and the 22-story Diamond Match Building at 733 Third Avenue. The firm also is the architect for the 58-story Pan American Building under construction at Grand Central Terminal. Among its notable achievements outside of Manhattan are the twin office buildings at 2 and 3 Penn Center Plaza in Philadelphia; the Massachusetts State Office Building in Boston; and 100 Constitution Plaza in Hartford.

Recipient of the Henry Hering Medal of the National Sculpture Society, Emery Roth & Sons also has been awarded the Apartment House Award of the American Institute of Architects' New York Chapter, the Silver Medal of the Downtown Manhattan Association and the Fifth Avenue Association's

Flying High

Army 2d Lt. J. Christopher Rea, 23, son of Dr. and Mrs. Robert F. Rea, 5109 Lane Lake Rd., Bloomfield Hills, recently completed the 30-week fixed-wing aviator's course at the Aviation School, Fort Rucker, Ala.

Multiple exposure . . . now you can run a Classified Ad 4 times for only \$2.70 (non-business, up to 15 words, cash rate). Dial Midwest 4-1100 now for fast results.

City Beat

(Continued from 1-B)

That evening they all went to a bartender's and tavern owners' picnic.

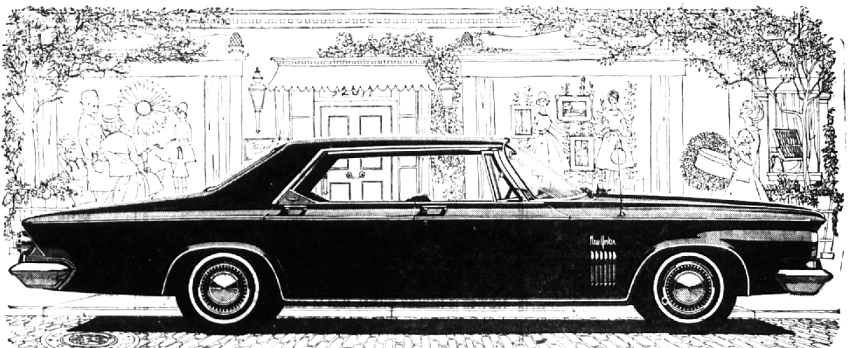
"It turned out to be a smorgasbord with delicious home-cooked food, in variety, quality and quantity."

"We met the mayor and several state politicians. "People were still arriving at midnight. It was an experience we will long remember."

THE FINANCE papers arrived in Ashland at noon on Tuesday.

"Fifteen minutes after the dealer got the letter, I had signed the papers and we were on the way with a new car," John related.

"We continued our vacation with a new car only a day and a half behind schedule. "I can still hardly believe this all happened so fast. "Three cars in three days!"



Presenting: the Crisp, New, Custom Look of CHRYSLER '63

Raise your eyes and take another long look at this beautiful '63 Chrysler.

How would you describe it? America's most prominent fashion leaders, style-setters, and designers said this about the '63 Chrysler: "A stunning concept in restrained elegance!" "Has the custom look of a town car!" "Beautiful simplicity in line and form!"

Inside you'll find a style revolution in the making: gorgeous patterns; loop-pile

carpeting that would grace any living room; wide, comfortable deep-cushioned seats.

Again in '63 you'll find no small-size Chryslers, no jr. editions, to undercut your big-car investment, penalize your pride or reduce your resale value.

All '63 Chryslers are big, beautiful and V-8 powered. All are pleasant price surprises, too. Take a good look at the custom-looking '63 Chrysler . . . then take a big, beautiful step ahead in style.

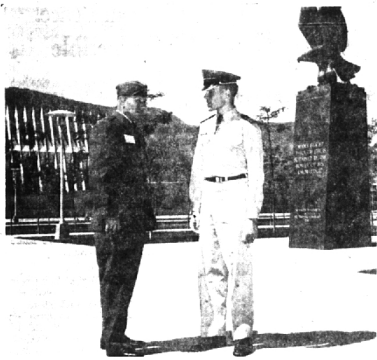
Now! 5-year/50,000-mile warranty!

Another First for Chrysler! The very highest standards of engineering leadership have resulted in an extended warranty* on the power-train of 1963 Chryslers.

*Your authorized Chrysler Dealer's Warranty against defects in material and workmanship on 1963 cars has been expanded to include parts replacement or repair for 5 years or 50,000 miles, whichever comes first, on the engine block, head and internal parts; transmission case, and internal parts, excluding manual clutch, torque converter, drive shaft, universal joints (excluding disc covers), rear axle and differential; and rear wheel bearings, provided the vehicle has been given all recommended maintenance according to the Chrysler Certified Car Care schedule. Factory-approved manufacturer parts may be used for replacement.

A PRODUCT OF CHRYSLER CORPORATION

BIRMINGHAM CHRYSLER PLYMOUTH, Inc., 912 S. Woodward Ave., Birmingham



Air Talk

Capt. James O. Trew, 1641 Witherlee Rd., visits with Peter R. Hammon of Royal Oak on a recent visit to the Air Force Academy in Colorado. Capt. Trew is Air Force Academy liaison officer for the Birmingham area. Cadet Hammon gave Capt. Trew a first hand account of life at the academy.

Government Seeking Qualified Engineers For Western States

The Bureau of Reclamation is accepting applications for a new engineer examination, the U.S. Civil Service Commission has announced. Positions paying yearly salaries of \$5,335 to \$7,995 are open in all branches of engineering.

In civil, electrical, hydraulic and safety engineering jobs are open which pay \$8,340 a year. The positions to be filled are located in 17 Western States and Alaska where the Bureau designs, builds, and operates extensive engineering works such as dams, canals, and hydroelectric plants that supply irrigation water and electric power.

MI 4-1100 is a number for you to remember. Call it today and place your Birmingham Eccentric classified.

Applications must be completed appropriate college study or have had equivalent technical engineering experience. Additional professional experience or graduate college study is required for the higher paying positions.

Applications will be accepted until further notice and must be filed with the Board of U.S. Civil Service Examiners, Bureau of Reclamation, Denver Federal Center, Denver 25, Colorado.

Further information may be obtained from many post offices throughout the country or from the U.S. Civil Service Commission, Washington 25, D.C.

Every **Thur. Fri. Sat.** - TWO 3-Day Specials

Kresge's 2 BIG BUYS

for family savings

Reg. \$1.77 pr. - Save 30%!

Women's Rayon-Flannel CAPRIS

Women's Sizes 10-18

\$1.47 PAIR

Black
Brown
Grey
Green

Trim, tapered and tailored style! Washable rayon and acetate flannel capris boast slimming waist and smooth side zipper. In a harvest of this fall's new solid colors.

Thur.-Fri.-Sat. Only

Chocolate Covered BRIDGE MIX

Reg. 59¢ lb.

BIG BUY 43¢ lb.

Milk chocolate covered caramel, cream, nut, fudge, jelly fillings.

CUSTOM PICTURE FRAMING

Your favorite canvas, water color, or prints
EXPERTLY FRAMED

Select your frame from many beautiful styles and finishes
KRESGE'S, BIRMINGHAM - KRESGE'S, NORTHLAND

West Maple at Henrietta, Birmingham
Open Thursday & Friday Evenings 7:00 p.m.

YOU CAN "CHARGE IT" AT KRESGE'S

B'ham Woman Assists Project To Aid Children

A Birmingham woman is participating in a bazaar the proceeds of which will be used to benefit retarded children.

Edna Marston, 1870 Webster, Birmingham may be contacted by persons interested in the project.

The event will assist the work for children at Lapeer State Home and Training School. The thirtieth annual bazaar, sponsored by the Lapeer Parents Association, will be held Oct. 6 at Children's Orthogenic School, Detroit. Luncheon will be served from 11 a.m. until 2 p.m.; dinner from 5 to 8 p.m.

THIS YEAR the bazaar and fund-raising committee, headed by Henry P. Widrich, has set a goal of \$10,000. Proceeds are used for recreational, educational, and occupational therapy facilities not provided by the state at the Lapeer Home. In addition, funds are used for existing programs and services for the approximately 4,000 mentally retarded and handicapped at the Home.

Simply dial Midwest 4-1100 and a trained "ad-visor" will help you word your ad.

big look on campus this fall:

with nylon ski parka

with drawstring hood and bottom, snagproof zipper, zip pouch pocket. Black, red, blue or avocado. S, M, L, XL. 8.98

For boys: royal blue, red, black. 10-20 sizes. 7.98

Headquarters for Johnston & Murphy and Jarman Shoes

FOR YOUR CONVENIENCE . . . Jacobson's will be open every Thursday evening until 9:00 P.M.

Jacobson's Shop for Men

Woodward at Willits
Birmingham