

## Trends in Glassware Studied in Sweden

By EVELINE OEN  
Arts Editor



A look at Swedish glass and what new things are being done with it was given recently to 26 architects, designers, social philosophers (city planners) and instructors of art from all parts of the world.

Invited by the government of Sweden, they participated in a symposium called "Swedish Design and Architecture." The group visited (in Sweden) major architectural projects and factories making products used by architects and designers.

Among those attending was Bengt Swenson, 2656 West 14 Mile Road, Bloomfield Township, a member of Skaniahouse Design Associates, 4079 W. Maple.

ONE OF the objects of the symposium was to study the development of social and cultural environment with respect to design and architecture.

"Our table manners are changing," said Swenson. "They are becoming less and less formal, which means that silverware and glassware must also change to meet this requirement."

"For example," said Swenson (speaking of the Swedish glass-makers), "they are taking the stem of wine glasses. They do so without impeding the taste of the wine. The glasses still have a certain shape that will keep the aroma in."

AN EMPHASIS has been put on more beauty in everyday objects, he said.

In November, Skaniahouse will be the site of an exhibit of Swedish glassware and wrought iron—and later in the year, of household pottery.

"It is a chance for Mama Jones to see what she can also do to create not only novelties for matted decoration, but also useful, yet beautiful craft," he said.

"If she sees how really beautiful and simple these things are, she might feel she can use and make them herself."

Prices Go Down, Cost of Living Continues to Rise

The U.S. Labor Department's consumer price index shows there has been a decline in the prices of many items during the past few weeks, including new cars, gasoline and household appliances.

Now, one of the great mail-order houses has reduced the price on 2,000 items. This is, observers say, a further indication that prices of goods are soft throughout the country.

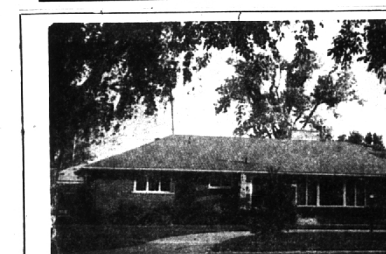
Meanwhile, the cost-of-living index continues to climb. This is due, many items during the past few weeks, including new cars, gasoline and household appliances.

**NOW... YEAR AROUND LAKE LIVING IN TWIN LAKES VILLAGE**

**ATTACHED GARAGE**  
2 BATHS • 3 BEDROOMS  
24' x 19' FAMILY ROOM

**2286 Sq. Ft. LIVING AREA**  
1/2 acre lot, city water and storm sewer, winding paved streets... every city convenience.  
OPEN DAILY & SUN. 12-4. CLOSED FRI.

LANDMARK HOMES CORP.



KEYNOTE—SPACIOUSNESS. There's no cramped feeling in this impressive brick ranch and the quality is indicated by the handsome exterior. Three twin-bedrooms plus optional fourth or family room, large screened porch, full basement, 2 fireplaces, and a 2 car garage. MAY WE SHOW IT TO YOU? \$34,500.

BIRMINGHAM 315 S. Woodward MI 6-7900

**Showcase of homes**  
HALL & YOUNG INC. REALTORS

### FIVE BEDROOMS

—And ready for you now in the Bloomfield School area. Panelled family room with fireplace. Superb built-in kitchen and ample breakfast area. First floor laundry. Exceptional closets. Storage room in garage. Wet plaster. It's in the trees in Broughton Farms and the price is just \$38,900. We'll show it to you today, or see it at Open House Saturday and Sunday, 1 to 6 P.M. Turn left off Franklin Road at Broughton Drive (just South of Quarton).

4544 Broughton Court

Lighting your way to better living

**BENJAMIN & BISHOP, INC.** REALTORS  
259 S. Woodward, Birmingham, Michigan MI 4-3232 — JO 4-5728

ingredients (sand, feldspar and materials for coloring) are put in. "It takes 24 to 36 hours to get the molten glass to the form at which they can shape it," he said.

The glass blowers have a long seal pipe with a hole in it which they dip into the molten mass to pick up a portion, he explained.

The pipe is then handed to a master blower who blows into and spins the pipe and molten glass on the end of it. The molten glass is put into a mold and then back into the furnace to be reheated so that the detail may be added by hand in further twisting and spinning.

BESIDES AN awareness of the close relationship among artists, craftsmen, architects and industry in Sweden, Swenson felt the trip served to confirm his appreciation of the Swedes' respect for and understanding of natural materials. "They do not treat glass as if it were plastic," he said.

Swenson, who is 29 years old, came to the United States from Sweden nine years ago. A graduate of the Swedish Academy of Arts and Crafts in Gothenburg, he received most of his formal education in Europe.

He has lectured at Cranbrook and has taught MSUO and University of Michigan extension courses.

### Food and Family Fitness A Daily Food Guide

<b>MILK GROUP</b> Some milk for everyone Children ... 3 to 4 cups Teenagers ... 4 or more cups Adults ... 2 or more cups	<b>MEAT GROUP</b> 2 or more servings Beef, veal, pork, lamb, poultry, fish, eggs As alternates—dry beans, dry peas, nuts	<b>VEGETABLE FRUIT GROUP</b> 4 or more servings Include: A citrus fruit or other fruit or vegetable A dark green or deep yellow vegetable At least one fruit Other vegetables and fruits, including potatoes	<b>BREAD CEREAL GROUP</b> 4 or more servings Whole grain enriched, or restored
--	---	--	--

Plus other foods as provided to complete meals and to include additional food energy and other food values.

This Daily Food Guide, prepared by the U.S. Department of Agriculture, defines the four essential food groups necessary to good health and physical fitness. Well-balanced portions of each should be included in every day's meals.

Isn't it deplorable that, in this land of abundance, we have health problems directly related to food? Figures show that it's not our poor who make this so, for malnutrition is as prevalent in families of upper income brackets as it is in those of lesser incomes. This is more appalling when we consider that we have a greater supply of food, and most important, a greater variety than any other nation in the world!

WHAT IS the reason? It's our eating habits. Food is a fetish... not the pleasant gathering of the family for happy, pleasant dining of good, well-balanced meals.

Overweight is placed high on our health problem list today, and we've made aware that obesity is something to guard against.

And so we indulge in fad diets—crash diets; self-denial — to lose weight in a hurry. Let the scale begin to climb. From over 500 million to one billion dollars is spent annually on pills, potions and so-called health foods.

MALNUTRITION among our teenagers is most frightening. The rate is mounting, especially that of the girls.

The no breakfast, catch-as-catch-can eating habits of our teenagers is most frightening. The rate is mounting, especially that of the girls.

ELLIS INC. SINCE 1945  
MODERNIZATION  
Family—Activity—Recreation Rooms & Porches a Specialty.  
MI 6-4188  
KITCHENS - BATHROOMS ROOFING - SIDING  
Most any alteration and repairs  
FREE ESTIMATES TERMS

A new, snag-proof, sheer, seamless nylon hose will be marketed within a few weeks. This new hose should outlast the ones now on the market by weeks. Reported price will be \$1.75.

**Snag-Proof Nylons**

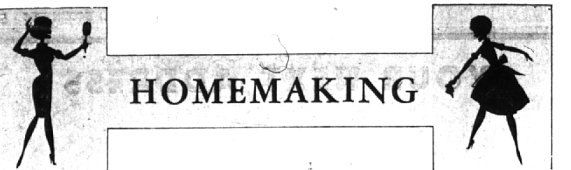
Introducing  
**"Oakland Valley Sub"**  
ROCHESTER, MICH. ("Heart of the Hills")  
1 Mile North of Rochester on M-150 (Rochester Rd.)

MODEL at 68 CEDARWALD OPEN: Saturday 1:00 to 5:00 Sunday 1:00 to 7:00  
OR CALL 1-8369

• 4 BEDROOMS • 2 1/2 BATHS • FULL BASEMENT  
Hotpoint Range, Oven, Dishwasher, Disposal, AM/FM Radio Intercom  
2153 Sq. Feet... Gas Heat... Wet Plaster... Blacktop...  
Underground Utilities (no Poles)

\$29,800 INCLUDING 165 x 165 LANDSCAPED LOT

**T. J. O'CONNOR**  
Custom Builder



## HOMEMAKING Cooperative Nursery To Hold Meeting

Culinary Art Show Slated

Consider the country-wide "Greatest Food Show" aimed for the month when autumn comes and kitchens surge with fresh activity? What was once in its early stages of planning, a Food and Culinary Art Show has now become THE Food and Culinary Art Show. Of national scope and sponsored by the Food Service Executive Association it will open at Detroit's Cobo Hall in the fall, running through Oct. 5, 6 and 7 when it is estimated more than 100,000 will attend.

This figure will include the ever-greater housewife out to improve her kitchen know-how and general knowledge of cookery and to study new techniques of family food service, dietary health rules, cost saving buying and waste avoidance.

USE OF food preparation appliances will be demonstrated and explained at the show.

The Michigan Consolidated Gas Co. will conduct a daily cooking school in a 1,000-seat auditorium, specially constructed within the exhibit area, close to the more than 250 displays.

Restaurateurs and others in allied food services and equipment fields will open the show on October 5. Louis Krass, president of the FSEA, stresses that this first day is reserved for industry representatives only with the evening hours of 5 to 11 p.m. open to the general public.

The second and third days, Oct. 6 and 7, the show is open to the public from 11 a.m. to 11 p.m.

A LARGE, imposing space near the inside main entrance and adjacent to the Gas Company's permanent cooking school will enclose the Culinary Art Exhibit, a special display showing of food masterpieces by skilled professionals.

Here, the world of hotel and club chefs of recognized fame and full of prizes for trophies and ribbons.

Also, in this area, show viewers will be able to observe, in action, the inside of a restaurant kitchen. Cadillac Hotel, who will sculpture, in ice, some of his famous patterns; the designs, of course having food as their basic motif.

Cooperative Nursery To Hold Meeting

Mayfair Cooperative Nursery will hold the first general membership meeting of the year 8 p.m. Monday at the Mayfair Nursery on Middlebelt Road between North Western Highway and Fourteen Mile Road.

There will be separate group meetings at this time to introduce the members to each other and to the teachers, Jane Fagan and Myrna Edgar.

Two guests, Agnes Scott and Caroline Hawkins, will speak to the groups on the topic, "Perspective on Cooperatives—The Broad View."

Mrs. Scott is a former president of the Michigan Council of Cooperative Nurseries and a past president of the Monteth Cooperative in Detroit.

MRS. HAWKINS is one of the earlier developers of cooperatives in Michigan and a founder of the Allen Park Cooperative Nursery. She is now the President of the American Council of Parent Cooperatives. Mrs. Hawkins has three children of her own and lives in the nearby Franklin Valley development. She is active in many organizations and has been on radio and television in connection with her nursery work.

Mrs. Scott will speak to combine Groups I and III, and Mrs. Hawkins will speak to combined Groups II and IV.

Parents with four-year-old girls will be interested to know that there are still openings in a Tuesday-Thursday session.

Membership chairman is Mrs. William Lortner, 5007 Echo Road, Bloomfield Hills.

Pot Plants For Winter Garden Now

Plants for a permanent window garden should be established in pots before the season arrives for moving them into the house, unless they are purchased from the florist during the winter.

They should be set firmly in the pots with the soil a half inch (more or less) below the rim to facilitate watering and with adequate drainage, such as broken pieces of pots, gravel or cinders, in the bottom of the pot.

THEY SHOULD be in the smallest size of pot that will properly hold their root mass. All pots should be properly cleaned before they are used, and it is well to soak them until they take up all the moisture they can absorb before the plants are placed in them.

After plants have been growing during the fall and winter seasons in the house, they may need repotting in early spring. For most plants, however, repotting need not be an annual operation.

MANY PLANTS should have only a little of the topsoil removed and this replaced with fresh soil; others should be entirely repotted, as much new soil being used as is possible without seriously disturbing the roots.

Repotting in this case should be done with the same care that one would use in a n y transplanting, such as reduction of evaporating surfaces shading until evidence of new root growth appears.

'Cloth of Kings'

Silk was once known as "the cloth of kings" and some rulers even passed laws to prohibit the common people from wearing it.

The Blue Water International Bridge between Port Huron and Sarnia, Ont., is the only toll-free span linking the United States and Canada. Tolls were removed early in 1962, after the bridge bonds were retired.

Four-lane divided highways are much safer than four-lane undivided highways because vehicles coming from opposite directions are physically separated and head-on collisions are virtually eliminated.

Legal Notices

Howlett, Hartman & Blair, Attorneys, 1601 Pavilion State Bank Building, Pontiac 15, Michigan

STATE OF MICHIGAN — The Probate Court for the County of Oakland, in and for the City of Pontiac, on a motion of said party, held at the Probate Office in the City of Pontiac, Michigan, on the 18th day of September, A. D. 1962.

Present, Hon. Arthur E. Moore, Judge of Probate.

In re: Matter of the Estate of JOHN KERLE, Deceased.

Frances S. Swisher having filed a petition praying that an instrument filed in said Court, admitted to Probate as the last will and testament of said deceased, and that administration of the estate be granted to National Bank of Detroit, the Executor named in said will, or some other suitable person, and for determination of the legal heirs of said deceased.

That the 9th day of October, A. D. 1962, at 3 o'clock in the afternoon, at said Probate Office, is hereby appointed as the date when and where to be further ordered. That public notice thereof be given each week for three consecutive weeks, prior to said day successive to the Birmingham Enterprise, a newspaper published in said County and that prominent cause a copy of this notice to be returned, delivered, registered and delivered at their last known place of publication at least two days prior to said day of hearing.

ARTHUR E. MOORE,  
Judge of Probate. (12-21)

Protect Your Swimming Pool This Winter Let us "WINTERIZE" it NOW

### STEELCRETE

GR 4-3601