

# YOUR NEXT ADDRESS

should be your best.

Overbrook has everything! \*

MAX BROOCK INC.

MI 4-6700

\*Paved roads, sewers, water, underground utilities!



By HARRY O. SMART  
KSCQK

A phone patch is a device that will permit the ham to connect his station to the commercial telephone lines. By this means a ham can communicate with non-hams in other parts of the world so long as the non-ham has a telephone.

A good example of this type of service was recently handled by Doc Weston (WBXO) of Wing Lake when he put through a couple of phone patches for Mr. and Mrs. Edwin Koran (880 Linden) to their son in Greenland.

MR. AND MRS. Koran were able to talk over their telephone via Doc's ham station to their son in Greenland via the ham station there and then another phone patch at that end. Handling it in such a way meant that the Korans could sit in their own living room and carry on their conversations with their son.

This type of communication is new to most people but it is carried on a great deal. The ham is neither desirous nor is he permitted by law to make any charge for this service. It is simply a service to his community which most hams get a

kick out of rendering, especially when the parties could not readily call each other by long distance telephone.

THE PHONE patch is becoming so common now that long distance operators will frequently ask "is this a phone patch call?"

Sometimes we get requests to make calls that would be long distance calls for us and so we simply place a collect call to the party being called.

If the long distance operator understands the circumstances it makes it much easier for her to get the called party to accept the charges. It is a little embarrassing to place a call to some remote spot in northern Michigan only to have the called party refuse to accept

the charges from some person they have never heard of before.

ONE LOCAL ham was making a phone patch call for a lady in Florida to her brother at Selfridge Air Force Base. The operator at Selfridge asked the name of the calling party and so of course the ham gave his name. This meant nothing whatever to the Colonel at Selfridge and so then he wanted to know the callers business. This, too, fell on deaf ears until the ham explained to the operator that he was an amateur radio operator and that he had the Colonel's sister on the other end of the line. The operator immediately came back with "Oh, this is a phone patch. Just a moment I'll explain it to the Colonel and I'm sure he'll OK the call."

## Music Course At Cranbrook

This is the final week of registration for "Music in History", a course offered by the University Center for Adult Education (WSU-The UM-EMU) at the Cranbrook School for Boys in Bloomfield Hills. The eight-week course, co-sponsored by the Cranbrook Music

Guild, meets from 8 to 10 p.m. on Wednesdays, beginning this Wednesday.

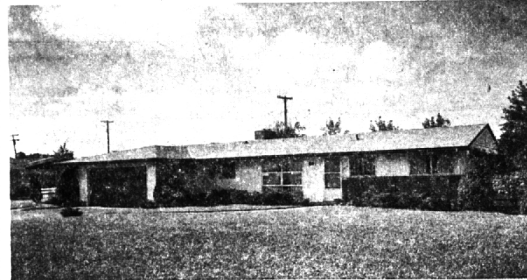
It will trace the history of music from the Middle Ages to the present, concentrating on representative styles as a reflection of the cultural background and composer's attitude toward his work. The instructor will be William P. Malm Ph.D., assistant professor of music literature, The University of Michigan.

APPARENTLY she did a good job because in just a few seconds the Colonel was back on the phone talking to his sister.

The strange part of this story is that the Colonel is a communications officer handling and working with the complex systems used by our modern Air Force yet he was unfamiliar with a phone patch!

Registration may be made the first night of class or at the University Center for Adult Education, Rackham Educational Memorial, Woodward at Farnsworth, Detroit, through Saturday noon.

## WE INVITE YOU TO LOOK IN



2795 Bolingbroke

2 to 5 P.M.

Saturday, Sept. 22

3 Bedrooms, 2 baths . . . .

Fireplace in Living Room . . . .

Separate Dining Room . . . .

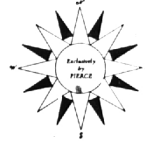
Family Room . . . .

Screened porch . . . .

Kitchen with eating space . . . .

Storage room and laundry room . . . .

Carpeting . . . .



FRED PIERCE INC.

460 NORTH WOODWARD, BIRMINGHAM, MICH.

Midwest 7-1414

## Sale

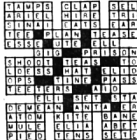
(Continued from 1-D)

FOR MANY YEARS the field of mental health has been a prime AAUW concern.

The Birmingham AAUW legislative group under Mrs. George Mosher helps publicize the bills in legislation which seek the provision of separate children's units and the funds for improved care, treatment and schooling for children already hospitalized.

A great majority of Birmingham AAUW members enjoy belonging to one of the fifteen study groups and nine book review groups which meet monthly. Among them are the very active children's theatre and puppeteers groups.

Answer To Puzzle No. 724



## If You Like Individuality

Sheer elegance in setting, in design and construction!

This handsome modern ranch just across the road

From Sodon Lake is strictly custom built to the smallest detail.

The gracious living room looks out on a spreading back lawn and Garden. Up two steps is the separate dining room adjacent to a

Complete GE kitchen with large breakfast space. The very

Livable family room has paneled walls of birch. Three

Pleasant bedrooms with a dressing room off the master, are

Served by two and a half baths. Electrical fixtures and interior

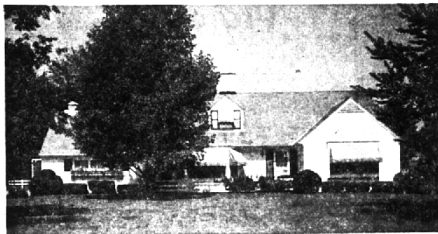
Decor are special and in lovely taste. The price—only \$47,900.

Walsh, James & Wasey Co.

Realtors Since 1918

431 S. Woodward Ave.  
Birmingham

Midwest 4-6500  
Detroit, JO 4-6033



SPARKLING WHITE CAPE COD—In most attractive area. 4-bedroom—2 bath—Extra large patio—glassed and screened Florida room. Wall to wall carpeting—Full basement, 37,900.



QUALITY—CHARM AND CONVENIENCE are combined in this interesting frame cottage near the Bloomfield Hills Country Club—on a private drive. 2 bedroom—1½ bath—fireplace in living room and library. \$30,000.



IN THE SHADOWS OF CHRIST CHURCH—Georgian Colonial on 2½ acres. 7 spacious bedrooms . . . 5 baths . . . plus 2 lavatories . . . Perfect screened porch . . . 6 fireplaces . . . Library—Hobby room—just redecorated. In the low 70's.



ONE BLOCK TO QUARTON SCHOOL . . . Large nicely landscaped property . . . Many trees . . . Unusually attractive 4 bedroom Colonial . . . Family room. 2½ baths. 30's.



IMMEDIATE POSSESSION—Colonial Tri-Level—Easy walk to Harlan School—Good size family room onto secluded patio—4-bedroom—2½ bath—Authentic Atomic Bomb Shelter—Stockade type fence. Low 30's.

## Weir, Manuel & Snyder, Inc.

298 South Woodward  
Birmingham, Michigan

Realtors

Phones:

Birmingham 644-6300  
From Detroit 566-2323