

Basements Passé Today

By CLEO SYMONS
Special Writer

Basements, the experts tell us, are a thing of the past. Like the woodshed and the old-fashioned pantry, they have simply outlived their usefulness.

Now that we have no further need of a coalbin, a fruit cellar or clothes-drying room, a basement is just another place to keep clean and store junk, we are informed.

Modern home-owners prefer to have their heating and laundry equipment on the ground floor, according to today's builders. Present day families are more mobile and therefore collect less, as most of us are aware.

Besides, statistics show that we now have more storage space in which to keep our possessions neat and shipshape.

IT OCCURS to me that some of these conclusions can stand a bit of examination. Like a pie without a bottom crust, a house without a basement has lost more than an outmoded coalbin or laundry room — it is only half a house.

Why did we ever abandon them? All this streamlining is fine, perhaps, but we must be practical.

Immediately, there come to mind certain questions. What to do with the dahlia bulbs? Where to park the porch furniture? Where to store the screens and storm windows when not in use?

NO MATTER how well equipped with storage cupboards and shelves the modern house may be, I defy anyone to fit a porch swing into one of its closets. We do well to find room for a spare handbag and couple of hat boxes.

Take fishing gear — or muddy clothes and rubbers. What do the experts propose to do with them? To-day's kitchen, transformed into a glorified family room, workshop and cooking-dining area, is obviously not the place for such things.

The garage, you say? Alas! The garage is out, too. Already it is bulging at the seams with a conglomeration of tools, lawn mowers, discarded baby carriages and mewling kittens.

NO WONDER the breadwinner has lost control of himself because Betty can't make Billy keep his tricycle out of the driveway. Is it fair to drive him to the second handful of headache pills by increasing the hazards of his nightly obstacle course?

And with no "glory hole" under non-existent basement stairs, it's going to be difficult to find a place to put all that stuff you root out of the den when unsuspected guests turn into the driveway.

Besides providing a perfect Alcatraz for your children and their thirteen dripping playmates on a rainy day, where else can you banish a wet dog?

THE SUBTERRANEAN hidey-ho has certain psychological advantages for husbands, too. Like affording privacy and a certain freedom with ashes when the atmospheric upstairs turns frosty.

But more important, when the Wifey says, "Charlie, in heaven's name, when are you coming to dinner?" When he's down there he can make almost anything sound like, "Be right there, dear."

All this may sound trivial and out-of-step, but it isn't. Why, the course of history would have been altered had there been a basement in the White House back in Abagail Adams' day. The name of that resourceful First

Lady will forever be famous simply because she had no other place to hang John Quincy's long-handled woolies than in the East Room of the executive mansion!

CONSIDER, if you will, what might have happened if some super-salesman had talked her into installing an automatic washer-dryer in an inconspicuous spot on the second floor — at the head of the stairs, say.

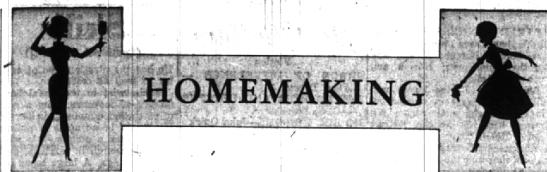
What a national loss of face would have resulted from a clogged drain, or leaky connection. Or an international crisis when an over-dose of high-sudsing detergent went cascading down the stairs just when the Maharajah of India stepped through the front door!

I may be wrong, but give us two or three generations, and I predict that those good old catch-alls will be right back under our houses where they belong.



Halloween Silly Soup

A Halloween silly soup can be a quick trick and treat. Start with one can of condensed tomato soup and one can of milk. Add crackers at the last minute to make the Jack O'Lantern eyes and nose. Sliced bland cheese is easy to cut into the traditional grin. The pumpkin-faced pie is another trick. Make the crust cutout before baking. If free-hand cutting isn't your particular forte, make a paper pattern to follow when cutting the dough. Enlarge the opening somewhat so that the face will stand out more.



Focus Room Arrangement Around Center of Interest

Interesting furniture arrangements for the "key" to an attractive living room, being style and color together into a well-coordinated setting.

An appealing room seldom gets that way by accident, points out Ralph Sherwin, chief designer for a well-known glass company.

It requires some careful planning to avoid continually shifting furnishings here and there without ever achieving completely satisfactory results.

TO BEGIN WITH, Sherwin advises forming an attractive "center of interest" as a focal point around which the room arrangement can be built w step at a time.

Such a "hub" can usually be found in an unusual, somewhat different piece of furniture which, although functional, can double as a conversation piece; a tastefully balanced "island" grouping of chairs, a table and a sofa, or an architectural feature in the room such as a fireplace or a window wall with a pleasing view.

TAKE FOR example, a living room with a wall of insulating glass which opens onto an adjoining patio or lawn.

The designer suggests making this spot the center of interest by arranging a living unit around the glass, not in front of it.

"Traffic flow within the room and to and from the outdoors, as well as full enjoyment of the view, are essential points to remember when laying out furnishings in a glass walled room," he said.

"There is little merit in having a home designed to gain living enjoyment from its surroundings and then minimizing these assets by blocking the view and hampering easy movement with bulky furnishings."

WHEN CONCENTRATING attention on a window wall, here's a

The thousands of suppliers who help General Motors' U. S. divisions make their products are located in 50 states and range in size from small shops to mass production companies. More than nine-tenths of these supplier companies employ fewer than 500 persons. Over 47 cents of each GM sales dollar goes to suppliers.

possibility that provides comfortable seating for five people.

To start with, locate a large chair in the center of the room facing the outside. Then place a sofa flanking the grouping on the left and balance it with two occasional chairs on the right, or vice versa.

A coffee table and necessary lamps and side tables round out a setting that will give everyone a full outdoor view.

THE TELEVISION set also must have consideration, Sherwin noted.

Recognizing its prominence in family life, he points out that to be functional, it must be placed to give easy viewing, but it should not be allowed to become the focal point to the disadvantage of more impressive features in the room.

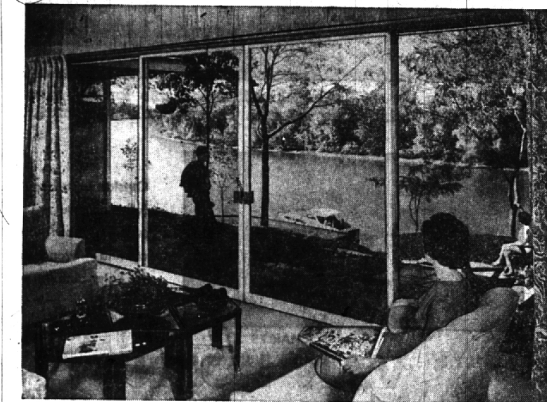
"After you have created the center of interest, it's a good idea to accentuate it with dashes of color," Sherwin added.

"For emphasis, use a strong color to attract the eye, and then balance its effectiveness by repeating the tone elsewhere in the room as subdued accents in pillows, pictures or other wall-mounted accessories."

A ROOM arrangement can be impressive and not be gaudy, the designer concluded.

Keep it simple.

When you have windows with a view, headline this point by using the room setting to utilize all the benefits available. Otherwise the room and its furnishings will vie in an unrewarding clash for prominence.



THE INSULATING glass wall acts as a "center of interest" for the furniture arrangement in this room. With a pleasant view to be enjoyed, chairs and sofas are positioned to provide seating for a maximum number of people in such a way that every-

one has a comfortable view of what is going on outside. Notice how the furniture is arranged around the window wall, not in front of it where much of the view would be blocked and easy movement back-and-forth from the outdoors would be hampered.

Roses Survive Winter With A Little Help

WINTER safeguards, according to All-America Rose Selections, the group that annually bestows the famous AARS award to outstanding new roses, are required if temperatures in your area reach down to the 15-degree mark. The protection assists the plants in wintering successfully by providing insulation against alternate stages of freezing and thawing, and guards against cane damage in strong winds or crushing under heavy snow.

IMMEDIATELY after the first freezing frost steps growth and sends roots and canes into a dormant state, follow this simple and really very easy routine advised by All-America Rose Selections:

1. Clean up around the plant, removing all fallen leaves. Spray the entire plant and soil surrounding it. This will prevent any disease from holding over through the winter and harming the bush in spring.
2. Cut back the canes on hybrid teas, grandifloras and floribundas to at least 18 to 24 inches, removing all dead wood. Longer canes will whip in the wind, become heavily laden with snow, or become the protective mound, all of which lead to damage.
3. Hill-up the soil around the canes to a height of 8 to 10 inches, using earth from between bushes or taken from another area of the

garden. It will be wise to give this soil a protective spray, too.

IF YOUR winters are severe, with temperatures around zero or below, added protection can be given your roses by covering the mounded bushes with evergreen boughs, straw, or any material that does not retain moisture. Avoid leaves and grass.

The leisure months of winter are the perfect time to plan those new landscape ideas with the adaptable and versatile rose that will become a reality next spring.

TO HELP you plan, there are many catalogs available for the asking. They will be mailed free by the mail-order specialists in roses.

In the pages of these books—spring editions are published in December and January—you'll find vivid, full-color illustrations of all the new and popular roses that are readily available to add new life, interest and appeal to your home scene.

"Fire-side gardening" is enjoyable and profitable. The returns will be visible and tangible next spring when your bushes dress up your garden and home with the unrivaled color and charm of the rose.

Process Deer Free At Cutting School

Deer hunters may have their deer skinned and cut into steaks and roasts according to specifications at no charge at the Detroit Institute of Meat Cutting, 2400 W. Warren, Detroit.

The deer will be accepted Friday from 9 a.m. to 10 p.m.; Friday, till 6 p.m. and Saturday till 11 p.m.

4-H Junior Leaders

Greenfield Village was the setting for a week-end junior leadership school held Oct. 18 through 20. Delegates attending from Oakland County were Marilyn Fabhan, Cheryl Leece, and Tim Stetson from the Ortonville 4-H Club; Douglas Norland, Linda Jacobson, Kristine Simonson and Eric Woodward from the Bloomfield Club and Janet Lessiter from the East Orion Club.

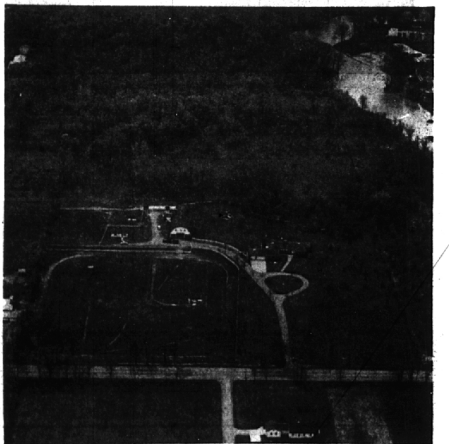
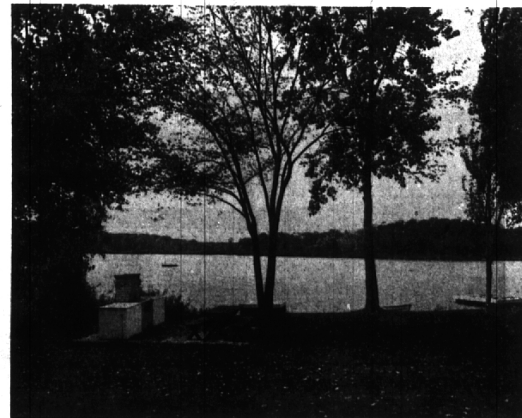
To assure increasingly better service to owners of General Motors products, GM conducts educational programs in 20 Training Centers across the nation to keep automotive mechanics abreast of improved service methods and technological advances. The facilities are also used to train GM dealer personnel in management and selling techniques. More than 400,000 enrollees participated in GM training programs in 1961.

A THING OF BEAUTY . . .

FROM THE TERRACE!

FROM THE FAMILY ROOM!

FROM YOUR APACHE!



Sheer enchantment lurks in the wooded glen that will be your view from the porch and Family Room of this Rudgate home. Near Cranbrook and Christ Church, it's Bloomfield's most impressive address. The magnificent home has four large bedrooms, three baths and powder room, and large Family Room. Built for the ages, this is a Rudgate classic. Priced at \$90,000.

—and Golf Course fairways from your front windows—On Forest Lake near the Club, the Bi-Level home is designed for fun living with a lovely large Family Room, two fireplaces, beamed ceilings, swimmer's dressing rooms, etc., etc. In the Bloomfield Hills school district, this superbly built home is available at \$36,500.

You'd think this Executive Estate would be way "Out County" but it's really on Ten Mile Rd. in a most convenient location. Built by a famous horseman, it has deluxe stables, tack room, and corral with plenty of room to roam. There's a delightful cottage on the premises and the home is just as luxurious as you would expect. The future possibilities for this property are endless, and best of all, the Southern bound owners will sell on most favorable terms.

300 S. Woodward

MAX BROOCK INC.

"SERVICE SINCE 1895"

MI 4-6700