

BRIDGE

in BIRMINGHAM

By **BUD MAYBAUM**
Southern Michigan
Bridge Association

It is always interesting to watch the "Newcomers" in bridge and board.

At many of the Birmingham tournaments, I have noticed Judy Donaldson and Mary Ellen Briggs and have seen their game get better each week. In a very short time, their names have been among the winners.

Today's hand, as played by these two girls, is an example of their progress and demonstrates how a hand can be won on the defense.

Sometimes we have luck on our side and play the more difficult hands against the weaker opposition, but Judy and Mary Ellen played this hand against the top North and South players.

Both Vulnerable.

NORTH
♠ 7
♥ 8 7 5 3
♦ 8 5 2
♣ K Q 8 7 6

EAST
(Mary Ellen Briggs)
♠ 9 6 3 2
♥ Q 9
♦ Q J 7 6
♣ J 10

WEST (Judy Donaldson)
♠ A 8 4
♥ Q 9
♦ K 10 9 3
♣ 9 5 4 3

SOUTH (dealer)
♠ K Q J 10 5
♥ A J 6 4
♦ A 4
♣ A 2

The bidding:
SOUTH WEST NORTH EAST
1 ♠ pass 1 NT pass
3 ♥ pass 4 ♥ all pass

Opening lead: 10 ♠

Judy's lead of the ten of diamonds was won by South with the Ace and at this point, South realized that he had one diamond, one spade and two heart losers.

To prevent a set at the contract, South played the ace of clubs and returned the deuce of that suit.

Now he won this trick in the closed hand with the king and returned the Queen.

At this point, Mary Ellen played the ten of hearts as the play of the deuce would have been a wasted card. South decided "to play a loser on a loser" and dropped the four of diamonds.

Mary Ellen now played the deuce of hearts. South played the jack and Judy won with the queen.

JUDY KNEW that South had given her a chance to beat the contract. That if South held the ace and king of hearts, he would have played them instead of the Jack, therefore Mary Ellen must hold the ace or king of hearts. If she held the Ace, the contract was beaten, but if she held the King, Judy could now promote her nine of

hearts by playing a small club which Mary Ellen obliged and trumped with the king of hearts, "the upper-cut," which caused the defeat of the contract and a top for progress.

Initiate Program In State Schools

Radio is playing an increasingly important role in education for about 80,000 Michigan school children.

"Festival of Song," a twice-weekly radio production of The University of Michigan Broadcasting Service, has become part of the curriculum in hundreds of schools.

First introduced in 1950, "Festival" has gained in popularity each year. Five thousand children are being added to the growing ranks of "Festival" listeners this year.

STUDENTS who listen to the program when it is presented "live" by the University stations—WOM, Ann Arbor, and WVGI, Grand Rapids—received their first lessons last week. Pupils in other parts of the state will begin their

Answer To Puzzle No. 728



There is considerable volcanic activity in the two newest of the United States, Hawaii and Alaska, but there are no active volcanoes in the old, continental forty-eight.

The only volcano active in recent times is Lassen Peak in North California which did considerable rumbling and spouting in the years from 1914 to 1921. The area surrounding it, known as Lassen Volcanic Park, is now a part of the National Park System.



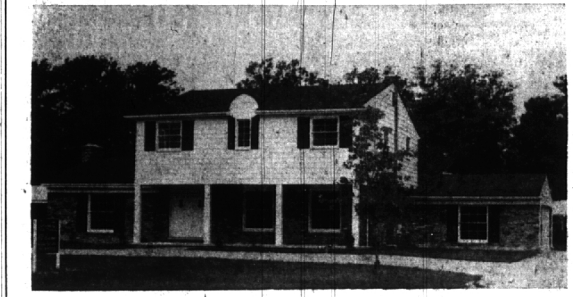
YOU CAN'T SEE IT—BUT at the foot of the hill behind this home, there's a trickling stream and pond. The impressive 4-level home, designed for a growing family, has 4 big twin bedrooms, 2 baths plus 2 lavs., formal dining room, 30 foot family room plus huge exposed recreation room, and attached 2 car garage. **WOULD YOU LIKE TO SEE IT? \$49,500.**

BIRMINGHAM 345 S. Woodward MI 6-7900
BLOOMFIELD 4114 W. Maple MA 6-5900

Showcase of homes
HALL & YOUNG INC. REALTORS

IN BLOOMFIELD

Drive North on Lahser—1/2 Mile North of Maple—Turn Left on So. Darlington



Take into account these features:

- 1—First floor laundry & mud room
- 2—Professionally planned kitchen
Many, many cupboards
Lots of counter area
Built-in range, oven, dishwasher
- 3—Large, pleasant, breakfast area
- 4—Family room opposite end of house from living room and dining room.
- 5—Circular drive
- 6—Landscaped
- 7—35,900

MANY LOTS AVAILABLE FOR CUSTOM BUILDING OR DUPLICATION

Bloomfield Real Estate Co.
MI 6-6500

ELECTION NOTICE

General Election
Tuesday, November 6, 1962

TO THE QUALIFIED ELECTORS OF THE CITY OF BLOOMFIELD HILLS, COUNTY OF OAKLAND, STATE OF MICHIGAN:

Notice is hereby given that a General Election will be held on Tuesday, November 6, 1962, at the respective polling places hereinafter designated:

- PRECINCT NO. 1: Bloomfield Hills City Hall, East Long Lake Road
- PRECINCT NO. 2: St. Dunstan's Playhouse, Lone Pine Road

For the purpose of voting for the following officers Viz:

STATE: AND DISTRICT:
Governor-Lieutenant Governor, Secretary of State, Attorney General, State Treasurer, Auditor General, Representative in Congress, at Large, Representative in Congress, this District, State Senator, Representative

COUNTY:
Prosecuting Attorney, Sheriff, County Clerk-Register of Deeds, County Treasurer, Drain Commissioner, Coroners, Surveyor, and such other Officers as are elected at that time.

NON-PARTISAN:
Two Justices of the Supreme Court (To fill Vacancies), Circuit Court Commissioners

CONSTITUTIONAL AMENDMENT NO. 1
Proposed amendment to State Constitution authorizing the legislature to provide for general revisions of the statutes

ALSO TO VOTE ON THE FOLLOWING COUNTY PROPOSITION:
Shall the provisions of Act No. 196 of the Local Acts of 1941, providing for the abolishing of the office of County Surveyor in counties having a population of 500,000 or over, be adopted by this county?

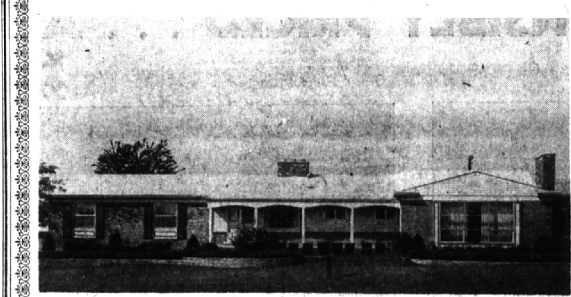
ALSO ANY ADDITIONAL AMENDMENTS OR PROPOSITIONS THAT MAY BE SUBMITTED
NOTICE RELATIVE TO OPENING AND CLOSING OF THE POLLS

Section 720. On the day of any election, the polls shall be opened at 7 o'clock in the forenoon, and shall be continuously open until 8 o'clock in the afternoon and no longer. Every qualified elector present and in line at the polls at the hour prescribed for the closing thereof shall be allowed to vote.

ROBERT J. STADLER
City Clerk



QUARTON COLONIAL Perfect Family Home in always a most desirable location.
Large (13x25) Living room with Italian marble fireplace. Company-sized Dining room. Paneled Family room. Huge Kitchen plus Breakfast room. Full tiled Basement. 4 large Bedrooms. 2 1/2 Baths including most attractive Powder room off center entry. Deluxe "April Air" humidifier. GE oven, range, dishwasher. Some carpeting and draperies. **IMMEDIATE POSSESSION. \$44,500.**



OUTSTANDING Looks just like brand new on a sloping lot immaculately groomed with fine stone terracing and beautiful shrubbery. The lovely back yard and Patio open to the exposed Basement.
Center entry steps down to living room and Dining room with its built-in buffet and planter—bath with wide views. Delightful Kitchen and Breakfast area with barbecue. Family room with beamed ceiling and paneled laundry on 1st floor. 3 Bedrooms, Dressing room and 2 1/2 Baths. 2 fireplaces. Wool carpeting in every room. Excellent Draperies.
PRICED AT \$39,900. \$29,500 mortgage can be assumed!!!!

Wherever you want to live—
SEE US—We are now affiliated with the largest inter-continental referral system in the entire United States.
Reputable-Reliable-Resourceful
American Institute of Marketing Systems, Inc.



LITTLE GEM A real charmer in the heart of the City on a shady cul-de-sac.
Living room with fireplace—Dining ell—Kitchen with built-in oven and range.
2 Bedrooms on first floor.
Large 3rd Bedroom and Sitting room which could be 4th Bedroom on 2nd floor.
1 1/2 Baths. Full Basement.
Carpeting, Shutters, Curtains. Air conditioning.
LOOK AT THE PRICE!!! \$21,200.
WALK to good transportation.



BEVERLY BRICK "Garden Club" back yard with artistic plantings and gorgeous flowers blended with equally fine neighboring plantings to give a park-like feeling.
Good-sized living room. Dining room. Charming Family room. Look-thru fireplace.
Lovely Kitchen and Breakfast area with Revco equipment, including freezer and Geneva cupboards.
3 Bedrooms. 1 Full Bath. 2 Lav.
Full tiled Basement with Recreation room and laundry.
Everything in excellent condition—sparkling and attractive.
We think you'll like this. Priced at \$39,500.

SNYDER KINNEY & BENNETT
INC.
Realtors
239 S. Woodward, Birmingham MI 4-7000
32740 Franklin, Franklin MA 6-9600