



WHILE BLACK and white photography is necessarily more limited than color, effective results are possible if one knows how, as does Robert Thom of Bloomfield Township. The negative for the above picture of a maple in its autumn glory was exposed through a green filter.

Autumn Trees Tip Leaves To Summer

By BILL THOM
Staff Photographer

Whether or not you realized it, we had our first frost on the night of Sept. 20 and, as a result, our local trees are beginning their annual extravaganza of color—sort of a last ditch nose-thumbing at the threatening winter.

Naturally all of you will want to get out your cameras and record this event for posterity. (Well, it's a big thing for the trees.) The fact that there's so much color around doesn't necessarily limit your creative efforts to color films. Actually, some very stunning and dramatic results are obtainable in black and white.

A GREEN filter over the lens will produce lightened foliage and a darker sky in the background and, at the same time, render skin tones much more pleasing if there are people in your composition. In fact, it is the ideal outdoor portrait filter.

Photo Forum

For the experimenters in the crowd, an unrealistic but dramatic effect can be obtained with infrared film which is more sensitive to warmer objects and living things like foliage as opposed to inanimate objects because the former emit more infrared radiation. This film will produce practically white trees and grass and the like against a nearly black sky and... well, that's about all I can promise actually. Whatever else shows up will be a surprise to us both.

ALL OF THIS is not intended to suggest your forgetting about color film, of course. For something a little out of the ordinary, watch for backlit smoke from burning piles of leaves. Whenever you're shooting toward the sun though, you have to be careful of lens flare. A lens shade, which might be left on the camera all the time, will give maximum protection from this.

BAA

(Continued from 1-D)

a show featuring the work of BAA instructors and their students. From June 2 to 9 will be the Terra Cotta sculpture group's exhibition, and from June 16 to 30 is the Arts Festival show. Chairman of the exhibition committee is Clifford West and of the program committee, Carolyn Hall.

BRIDGE in BIRMINGHAM

By BUD MAYBAUM
Southern Michigan Bridge Association

Recently I was reminded that "rubber bridge" is also being played in Birmingham. A close friend, who is really an expert, but will remain nameless, was playing in a game of "party bridge," where one plays four hands with one partner, then changes partners until he has played with each player. This expert was playing today's hand with the weakest member of the foursome and decided to play each of these four hands in a very conservative manner. He asked me what I would have done with this hand and my answer was, "Trust your partner."

My expert friend had a part score of 60 points and only the opponents were vulnerable. He was the dealer and held this hand.

- ▲ A 9 7
- ◆ K J 9 4
- ♠ Q 10 7
- ♣ K J 4

The bidding:
SOUTH WEST NORTH EAST
1 ♠ 1 ▲ 3 ♣ pass
4 ♠ pass 4 NT pass
5 ♠ ! pass 6 ♠ all pass

With the score of 60 points, North's bid of three clubs — one over the required bid for game — was a slam demand. Why didn't South respond with five diamonds in response to his partner's Blackwood bid of four no trump? He did explain his lack of trust in his partner and wanted to slow him down. However, let's look at his partner's hand:

- NORTH
- ▲ K
- ◆ A Q 7
- ♠ A 2
- ♣ A Q 10 9 7 3 2

In a duplicate tournament, those in seven clubs would get a better than average score, but the top score would have been seven no trump. I feel that many good players would have arrived at this proper contract.

It is also my belief that all bridge players should bid their hands correctly and not to attempt to make up for their partner's weakness by false bids. This type of bridge will harm your game. I also feel that to become a top bridge player and to remain a top bridge player, you must play dupli-

cate bridge.

RECENT winners in the Birmingham area include: Mr. and Mrs. A. R. Butler; Eleanor Haack and Helen Boothman; Greta Shopper and Mary Ellen Herman; Jim Crab and Tom Crum; Mr. and Mrs. Burt Mann; Keith Kelly and Keith Anderson; Mr. and Mrs. Harold Sandlieman; Dr. and Mrs. Harold Barron.

For you who are interested in sectional and regional tournaments, The Michigan Bridge Association will hold its fall sectional tournament at the Detroit-Leland Hotel the last week end in October. At Toledo, Ohio, the first week end in November, there will be a regional tournament where you may receive those coveted regional red points. The tournament will be reported in this column. It will run for five days from Nov. 7 through 11.

Local Architect Writes Article On School Specs

Appearing in the September issue of "American School Board Journal" is an article by William Lyman of Jickling and Lyman, Architects, 261 Daines, Birmingham.

In the article, Lyman develops a questionnaire to be used by school boards when writing educational specifications for a new school. "A set of educational specifications for a new school," explains Lyman, "is basically a detailed description of all the activities that will take place in the building."

"IT MAY GO further by spelling out the broad educational philosophy and objectives of a particular community, or even the desired general architectural characteristics of the proposed new school," he says. It should also include a preliminary budget covering building construction, equipment and furniture, site development and fees, according to him. "Without adequate educational specifications the best architect in the world cannot design a school to fit a community's needs," says Lyman.

STILL MEADOW

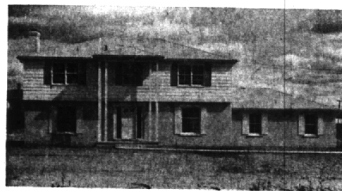
Carriage Trade Homes
Gracious Country Living

LONG LAKE ROAD

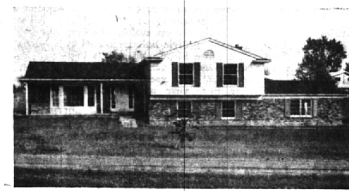
LANEIER ROAD

BLOOMFIELD HILLS COUNTRY CLUB

CITY OF BLOOMFIELD HILLS



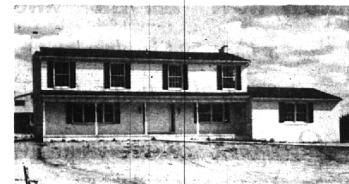
4 Bedroom Colonial — \$48,500



4 Bedroom Tri-Level — \$39,900



4 Bedroom Ranch — \$39,900

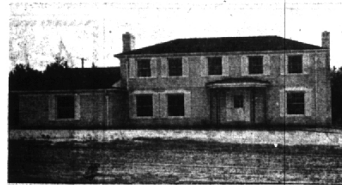


5 Bedroom Colonial — \$46,500

All these fine homes have

- 2½ or 3 Baths — Dressing room in some.
- 1 or 2 Fireplaces (each different).
- Family room — paneled, beamed ceiling, parquet floor in some.
- De Luxe Kitchens and Breakfast areas with the newest of equipment and cabinets.
- Slate, vinyl or marble foyers.
- Separate Dining rooms.
- Full or partial Basements.
- 2½-car Garages.

Each has its individual floor-plan and special "touches" to please you.



4 Bedroom French Provincial — \$39,900

CHECK THESE ADVANTAGES

- Large rolling sites — winding roads.
- Excellent established homes with fine lawns and trees and shrubs.
- Architectural control — to protect you.
- Sewer and gas lines are in.
- Bloomfield Hills Schools and address.
- Secluded Country atmosphere BUT less than a mile to either Telegraph or Woodward for quick trips to town.
- Within a short radius of Country Clubs, Lakes, Cultural facilities, Churches, Schools, and all the shopping available in Birmingham and Detroit.

QUALITY BUILDERS

The list of builders who are building and have built homes here reads like the "who's who" of the business—

COLEMAN & MOSS — RICHARD Z. KOCH
FRED CAPALDI — PHILIP E. DAHL — WAUGH & SONS
STANTON BECKER

4 and 5 BEDROOM TRI-LEVELS — COMPLETE IN 30 DAYS

OR—lots available—bring in your own Builder and your own design as long as it conforms to the high standards established.

OPEN EVERY SUNDAY — DRIVE OUT & SEE!

30 Years
of
Integrity
and
Service

SNYDER KINNEY & BENNETT
INC.

Realtors
239 S. Woodward, Birmingham MI 4-7000
32740 Franklin, Franklin MA 6-9600

A Highly Qualified
Staff
with Experience
and Reputation



WING LAKE SHORES—Framed by colorful fall foliage, this glistening white brick ranch is just a short walk from its lake privilege beach and also close to grade school. 3 nice bedrooms, 20 foot paneled family room, and large kitchen with convenient breakfast area. YOUR OPPORTUNITY! \$25,900

BIRMINGHAM
345 S. Woodward
MI 6-7900

Showcase of homes
HALL & YOUNG INC. REALTORS

BLOOMFIELD
4114 W. Maple
MA 6-5900