

- ACROSS**
- 1 Goes in front
 - 6 Assist
 - 10 Breath
 - 14 Debates
 - 15 Bewildered
 - 16 Region
 - 17 Postponement
 - 20 Kind
 - 21 Follow
 - 22 Pair of leg
 - 23 Period of time
 - 24 Pie pan
 - 25 Go by
 - 27 Kind of lettuce
 - 28 Painful
 - 29 Consumed
 - 32 Make butter
 - 33 Page
 - 36 Negative word
 - 37 Oscillate
 - 38 Defeat
 - 39 Volcano
 - 40 Suez
 - 41 Flies
 - 42 Iron
 - 43 Footlike part
 - 44 Speak
 - 45 Sock
 - 46 Food fish
 - 47 Switch
 - 48 Obese
 - 51 Willow
- DOWN**
- 1 Fall behind
 - 2 Mistake
 - 3 Greek market
 - 4 Tubular
 - 5 Indian weight
 - 6 Fear
 - 7 Italian family
 - 8 Hawaiian
 - 9 Cooking utensil
 - 10 Lanes
 - 11 Operatic solo
 - 12 Gaseous light
 - 13 Water container
 - 18 River islands
 - 19 Property
 - 21 Male child
 - 23 Bands
 - 25 God of war
 - 27 Weep
 - 28 Large ocean fish
 - 29 Poker stake
 - 30 Measure of weight
 - 31 Greek letter (pl.)
 - 32 Cut short
 - 33 Rubber tube
 - 34 Employ
 - 35 Cloves
 - 37 Lightly
 - 38 Feather scarves
 - 39 Work unit
 - 41 Begin
 - 42 Animal foot
 - 43 Vegetable
 - 46 Malt drinks
 - 47 Avoid duty
 - 48 Insects
 - 49 Make winds
 - 50 Souths
 - 51 Lubricates
 - 52 Dagger
 - 53 Nylon
 - 54 Prayer ending
 - 55 Combining form black
 - 57 Abate
 - 58 Narrow inlet
 - 59 Ventilate

Answers to This Week's Puzzle Will Be Found On Page 5-D

1	2	3	4	5	6	7	8	9	10	11	12	13
14	15	16	17	18	19	20	21	22	23	24	25	26
27	28	29	30	31	32	33	34	35	36	37	38	39
41	42	43	44	45	46	47	48	49	50	51	52	53
54	55	56	57	58	59	60	61	62	63	64	65	66

PUZZLE NO. 727

2 Art Events Scheduled by Local Gallery

A "Meet the Artists Night" at Jacobson's Studio of Fine Arts this evening will highlight two art events at the local galleries this week.

Original lithographs by Renoir, Cezanne, Degas, Clave, Chagall, Dufy, Buffet and Toulouse-Lautrec are featured in the show, "La Femme," which opened Monday. The exhibit will continue in the Studio of Fine Arts through Oct. 25.

Beginning today, the art work of about 50 children will be shown throughout Jacobson's stores. Media represented will be oil, charcoal, chalk, ink and water color.

The young people's exhibit will show work done in art classes at the Shrine High School and in classes taught by Mr. Pignigan of the Artists' Supply Center, both in Royal Oak. The age group represented ranges from 7- to 15-year olds.

About 125 works will be shown in the exhibit which will continue until Oct. 18.

Cranbrook Extends Series in Science For Young People

Another series of programs introducing young people to science will be held at Cranbrook Institute of Science beginning Saturday.

The Saturday morning sessions at 9 and 10:30 a.m. for children, grades one through three, will run for three weeks. Classes for 4th graders and up are scheduled for Nov. 3, 10, 17 and 24 at 10:30 a.m.

The series is free to junior members of the institute. Further information may be had by calling Cranbrook.

When completed, Interstate 75 Freeway will extend from the center of the new International Bridge at Skull Ste. Marie to Tampa, Fla., a distance of 1,226 miles.

Behind the Welcome Mat

by CORRINE ABATT

In the fall of 1960 I clipped a short newspaper story and the piece has been gnawing at my thoughts ever since.

It came out of the International Live Stock Exposition and the gist of it was that the counters of the future would be full of boneless meat.

Now, at first thought this sounds fine — more meat for the money and less waste. Yet, the passing of the bone could be tragic.

Worth considering is the fact that boneless meat like lumpless peanut butter and lumpless butter-milk will have less character — personality, if you like. It will be just another blob of stuff on the

dinner table without a distinct form.

MORE IMPORTANTLY, the bone is a link. It is bad enough that many of today's city bred children think milk is brewed at the dairy like fruit punch, but without bones, they may assume that meat is a concoction which originates at the rear of the supermarket. The bone is proof positive that meat once mooed, bawled, oinked or—forgive me—whinnied.

It also links the 20th century bone chewer to his less sophisticated ancestors.

As one savors the tender pink morsels of a steak bone, he can understand the satisfaction exper-

enced by his cave relative as he sat by his fire and finished the remaining tidbits on a sabor-toothed tiger joint.

As well, modern man, bone in hand, can feel for a fleeting instant, sympathy for his relative who fought bitter battles to hold or gain possession of choice hunting grounds.

Drama Workshop Has Open House

The Troy Drama Workshop will entertain at an open house tonight at 8 p.m. at Firehall No. 1, Rochester Road south of Big Beaver in Troy.

Anyone interested in any phase of stage work is invited to attend.

Kramer Gets Commission Appointment

Worth Kramer of 4955 Ardmore, Bloomfield Hills, president of The Goodwill Stations, Inc., of which WJR radio in Detroit and WJRH television in Flint are Michigan divisions, has been appointed to the Michigan Cultural Commission by Governor John B. Swainson.

In acknowledging the appointment, Kramer said, "We especially appreciate this opportunity to serve on Michigan's Cultural Commission because mass media plays such an important part — indeed, has a responsibility — in the cultural development of the community in which it serves."

HOST OF FEATURES —

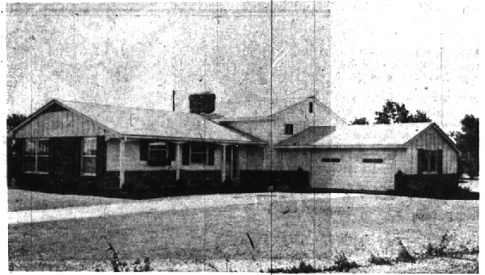
equals unusual value.

Example —

- Full dining room
- Two natural fireplaces
- Two full baths plus lavatory
- Three big twin bedrooms
- Huge breakfast room
- Activities room plus a hobby room
- Range, oven and dishwasher
- Bloomfield Schools

Just two years old and priced at only \$33,500.

See it today!



6040 Burnham Court



Lighting your way to better living

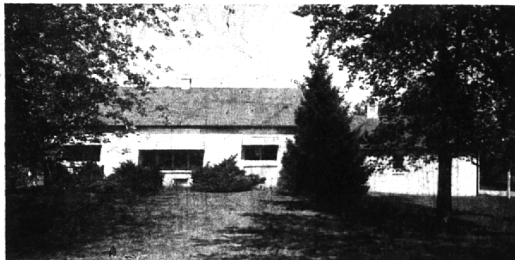
BENJAMIN & BISHOP, INC. REALTORS

259 S. Woodward, Birmingham, Michigan

MI 4-3232 — JO 4-5728

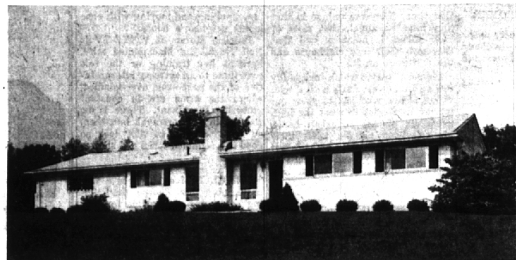
We've PLANS for You!

MAKE YOUR "MOVE" NOW



2 DELIGHTFUL ACRES \$1,600 DOWN

Now is the perfect opportunity for your family to have room to keep the horse it dreamed about. Over 1700 square feet in this 3 bedroom home, complete with a nice separate dining room, 3 car garage — Carpeting and drapes. Only \$22,500, and a close-in Bloomfield location.



BEAUTIFUL BLOOMFIELD LOCATION TRULY "COLONIAL"

Lovely location in Charing Cross Estates for this truly Early American home in excellent condition. Charming fireplaced Family Room. 2 full baths, and 3 bright, cheerful bedrooms. Built-in appliances — Carpeting and drapes—Owner Anxious—Call TODAY, only \$2,500 dn.



NEAR THE COUNTRY CLUB "LARGE AND GRACIOUS"

Stone-trimmed 6-year-old ranch on WOODED 160-ft. site. Separate dining room, big family room and Florida room. Excellent, well-planned kitchen with cheerful eating space. Absolutely charming Country Club setting and a beautifully maintained home. See TODAY. \$42,800

975 S. HUNTER BLVD.
BIRMINGHAM, MICHIGAN

CHAMBERLAIN CO.
REALTORS

MI 6-6000
JO 4-6000

