

Bloomfield Hills Teacher Joins MEA Staff

George E. Cavin, former Bloomfield Hills school teacher, has joined the Michigan Education Association as a field service staff representative, according to MEA officials.

Cavin, who holds bachelor's and master's degrees from Wayne State

University, will work in the Detroit area to improve education and professional organization.

Previous to joining MEA, Cavin taught English and social studies in the Bloomfield Hills School District. He, his wife and four children live in Union Lake.

Multiple exposure . . . now you can run a Classified Ad 3 times for only \$2.70 (non-business, up to 15 words, cash rate). Dial Midwest master's degrees from Wayne State 4-1100 now for fast results.

Moxley's Report on School Buses

Related story 1-A

City officials have asked The Birmingham Eccentric to publish Police Chief Ralph W. Moxley's report on the local school bus situation.

Following is the complete text of his Aug. 28, 1958, report to the commission. At the Sept. 4, 1958, meeting this report was discussed and the situation has not changed much.

HIS 1958 REPORT in full:

Effective Sept. 13, 1958, the Michigan Vehicle Code has been amended to provide that, except when meeting a school bus on a street or highway divided into two roadways by an intervening space or physical barrier, the driver of the vehicle overtaking or passing a school bus from either direction must come to a full stop at least 10 feet from the bus which has

stopped for the purpose of receiving or discharging passengers.

These vehicles are incorporated until the school bus resumes motion or the school bus driver signals to proceed or the visual signals are no longer actuated.

THIS SECTION is not applicable to school buses which are incorporated into cities or villages unless covered by ordinance and proper signs are installed at city or village limits.

The change in the law has brought up the question of the possible need for such ordinance in Birmingham.

We have checked with school authorities regarding the number of school children picked up or discharged within the corporate limits of Birmingham. We have been advised there are approximately 100 children living north of 14 Mile Road just east of the Birmingham County Club who will be transported by Birmingham school buses to the Baldwin School.

These children are loaded and unloaded on Chester St. in front of that school.

All other schools being served by regular school buses have off-street loading and unloading facilities, but all of the children are from outside the city limits.

THE GREAT Lakes Transit Company operates six buses on school routes in the Holly Name School and also operates buses to the Birmingham High School, Derby and Barnum Junior High School, and the Birmingham City School.

These buses receive and discharge school children in Birmingham. Since they are operated by a common contractor, certain uniformity in color and design is required by the Michigan Public Service Commission, they do not come under the requirements of the law in regard to their buses being painted the standard yellow and black colors of a regular school bus and are not required to have flashing red lights on the front and rear.

WE HAVE met with Mr. Earl O'Connor, general manager of Great Lakes Transit, and Mr. Glen C. Crawford, general supervisor of the Birmingham Division of the

Lakes Transit, regarding the markings they will use on the buses on school runs.

They advise they will use a large canvas sign on the back of the bus designating it as a school bus. The front of the vehicle will have the words "School Bus" in the destination box.

These vehicles are used on regular passenger runs, after their use as a school bus. It is the feeling of Great Lakes Transit authorities they could not provide further identification, such as lights and yellow paint without impairing the use of the bus in passenger service.

THE PROPOSED markings on these vehicles raise some question as to whether they are marked so as to adequately appraise a motorist of the identity of the bus.

This identity may be rather difficult to readily establish on a four-lane pavement such as W. Maple where regular passenger buses also operate. The failure of a motorist to identify the vehicle as a school bus, could have disastrous results if some child was lured into a feeling of false security and stepped into the path of an errant motorist.

IT SEEMS the safety in the school bus program is dependent almost entirely upon the adequate and uniform marking of the buses.

These vehicles are used on regular passenger runs, after their use as a school bus. It is the feeling of Great Lakes Transit authorities they could not provide further identification, such as lights and yellow paint without impairing the use of the bus in passenger service.



GEORGE W. ROMNEY

Speaker

(Continued from 1-A)

Pearson, Jeanne Lloyd and Mrs. Gay D. Hitt.

Friday's guests will be Mrs. Edith B. Hitt, Mrs. W. Hunter, Mrs. Ruth Stevens, Mrs. Fran Harris, Mrs. Pearson, and of course, Miss Howard's cover has encompassed successful appearances as an actress on television and on the stage as well as ventures into the world of writing. She has written articles on government and world affairs and is the author of a novel, "On Stage, Miss Douglas."

HER THIRD and most noteworthy career, however, has been in the field of political reporting. Her coverage of the 1960 Democratic and Republican national conventions.

Since then she has held exclusive interviews with many well-known political figures, topping those with a 38-minute interview with John F. Kennedy during his presidential campaign and an almost two-hour interview with Khrushchev when he visited the UN in 1960.

County May Lose \$800,000 State Aid

Oakland County may lose up to \$800,000 in state and federal aid if it fails to comply with orders from the Michigan fire marshals to make the county medical facilities for welfare patients safer.

George Williams, acting director of the county's social welfare department, informed the welfare committee of the County Board of Supervisors of the threatened loss at a meeting Monday.

"We have been warned by the state Welfare Department that if the county does not comply within a reasonable length of time, state aid will be shut off," Williams said.

HE ADDED that the county will continue to lose state aid until the work is done.

Compliance with the ruling will be recognized by the state "if it looks as if the county is making some direct effort to correct the situation," said Williams. "But, if no effort is made, the state will not pay."

Following a recent inspection of the medical centers, the facility and infirmary, the state fire marshals directed:

1. Remove all furniture from the exterior of each patient-occupied floor and provide a proper day room for these patients. The corridors are presently used as lounging areas.
2. Widen doorways to permit pas-

sage of beds from the building in case of fire or other emergency.

3. In all fire doors and fire walls to afford one hour resistance to fire between sections of the buildings.
4. Install automatic sprinkler systems where wood construction is used.

IN ADDITION, the State Welfare Department has instructed the county to install more bathrooms in the buildings.

Williams said the total cost of renovating the buildings to comply with these orders will amount to approximately \$500,000. "As a result, the county will have to reduce the total bed capacity by at least 100," he said.

THIS means the county would either be required to build additional facilities or may to keep the displaced patients in private convalescent homes," he added.

He estimated the annual cost to the county for private care at \$200,000 and the cost of an addition in excess of \$1 million.

The welfare committee recommended that the ways and means committee of the Board of Supervisors "take action to comply with the fire marshals' report."

"WE WOULDN'T want to be responsible for any loss of life in a fire because of a failure to act now," said welfare committee member A. Taylor Menzies.

County Welfare Board member Maurice Creteau said, "This is what happens when we accept state and federal aid. It allows them to dictate to us."

"Everything you take something from them you end up holding the bag," Williams is acting county welfare director during the extended illness of the director, George Bart.

Oakland

(Continued from 1-A)



L. WILLIAM SEIDMAN

ally at a drive-in on Telegraph near Fontaine.

Seidman will join Romney again at Oak Park High School in the evening.

He will attend another coffee gathering at 8:30, this time at the home of Mrs. C. Boyd Stockmeyer, 777 Arlington, Birmingham.

Wednesday morning, Romney tried a new form of campaigning—riding with commuters aboard a train from Bloomfield Hills to downtown Detroit.

ROMNEY AND Swainson took part Tuesday night in their first of three TV debates. They gave opening and closing statements and gave rebuttals to each other's remarks.

Main campaign issue to come out of the debate was the state's unemployment figure, Swainson claiming unemployment had decreased and Romney claiming that the governor ignored the number of unemployed people who had left the state.

Village to Request Light at Crossing

BEVERLY HILLS — Meeting with a group representative from Our Lady Queen of Martyrs School PTA Monday, the council took action to help control traffic at the school crossing at Dunblaine and Southfield.

Village Manager Robert E. Murphy was authorized to ask the

county to install a traffic light on the corner. In the meantime, patrolmen will be on hand in the morning and afternoon to help children across the street.

MARK WESSEL
 • Pianist • Composer • Teacher
 Studio at 3815 Old Indian Trail, Orchard Lake
 Phone 682-1452

MOTHERS . . .

We like kids, and we cater to little Boys and Girls! Let us cut their hair on our horse, "Trigger" (Too close, we'll cut Dad's hair, too.)

C. POLITE'S BARBER SHOP
 (Formerly with J. L. Hudson Co.)
 316 Hamilton, East of Demery's Phone 611-2273

DPW
 (Continued from 1-A)

After the job is completed the DPW takes over.

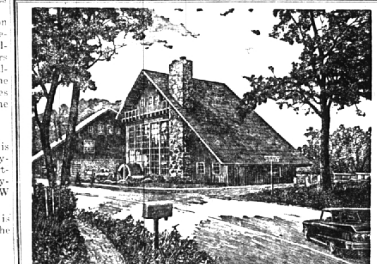
KEEPING THE city's 46.7 miles of paved streets in top shape takes about \$16,000 of the DPW's \$247,610 budget.

The work primarily covers crack fillings, cleaning of catch basins and the patching of potholes on city streets. Again major construction jobs are contracted out.

The 37.5 miles of unpaved streets cost about \$31,000 to maintain. More money has been spent on unpaved streets in recent years because of the changeover to the seal-coat program. The cost of repair to the unpaved street prior to seal-coating as well as grading the gutters and cleaning up the leaves and gravel has been figured in the budget.

ANOTHER JOB of the DPW is to take care of the 600 fire hydrants. Although the fire department paints the familiar red hydrants, it is the job of the DPW to maintain and replace them.

No matter what the repair job is in Birmingham the DPW is on the job.



PAINT CREEK CIDER MILL
 FRESH CIDER and DONUTS
 OPEN SAT. & SUNDAY
 COME OUT AND SEE US SOON

PAINT CREEK CIDER MILL
 4483 ORION RD.
 (Between Rochester and Lake Orion)
 At Goodison

When You Need Us... We'll Be Here!

For Your Convenience . . . Daily Deliveries Serving All Store Departments

WILSON'S will gladly pick up your prescriptions and return them to you with the least possible waste of time.

EXPERIENCED REGISTERED PHARMACISTS ON DUTY AT ALL TIMES
 ASSURING CAREFUL, ACCURATE AND PROMPT FILLING OF ALL PRESCRIPTIONS

Wilson DRUG COMPANY
 — Now At Two Convenient Locations —

BLOOMFIELD HILLS
 71 W. Long Lake Rd.
 MI 7-2300

BIRMINGHAM
 Woodward at Maple
 MI 4-5600

INTERESTED IN HERBS?

Recipe of the Week: Cream Gargol: 1 cup green split peas, 2 cups salt pork, 1 1/2 cups, 2 large leeks (w/ base some, 2 1/2 bunch), 1 cup cream of tartar, salt & pepper.

Cook peas till soft, cube pork and fry till light brown. Put leeks in fine strainer and wash with salt & pepper. Add peas, cream, salt & pepper. 1 cup oil should be added after you remove from stove.

"YOUR FAMILY WILL BE MIGHTY PROUD WHEN YOU TAKE HOME AN ARRANGEMENT YOU HAVE MADE YOURSELF IN OUR WORKSHOP!"

You will have personal help—materials available—FREE COFFEE FROM 9 A.M. TO 5 P.M. (10¢ for use to bring a sandwich)

DATES—Oct. 16th & 30th. Dried Arrangements—Nov. 6-13th & 27th. Xmas Arrangements & Decorations.

HERE PLANTS for your kitchen window—We'll plant them for you!

HOLLAND BULBS (CHOICE) 10¢ OFF TO MAKE ROOM FOR XMAS THEMES!

OPEN SUNDAYS 10:00 a.m.-2:00 P.M. EVENINGS TILL 7:00 p.m.

Mabel's Herb and Garden Shop
 2140 Walnut Lake Rd., Maple Rd. West to Inkster Rd., 1/2 mile north to Walnut Lake Rd., turn West to 2140
 626-9599

Business Opportunity

Interior Decorating Studio — well established, ideally located in Birmingham area. Splendid opportunity for aggressive individual. Fully equipped. Samples, accessories, hardware and office furniture, etc.

ECCENTRIC BOX No. 980

We have sold:

888 Bloomerest Drive to Mr. and Mrs. Albert E. Smith. Mr. and Mrs. Smith have made their home in Birmingham for many years. Mr. Smith has retired from General Motors to enjoy country living.

3174 Pickwick Lane to Mr. and Mrs. Robert L. Johnson. Mr. Johnson is a sales engineer with The Perfect Circle Corporation.

17210 Beverly Road. Mr. and Mrs. Frank L. Dyson are the new occupants.

217 Wadsworth. Mr. and Mrs. Robert G. Hadden are the new occupants.

FRED PIERCE, Inc.
 Realtors

IS COLLEGE SUCCESS GOING TO BE A BIG?

MAPLEHILL has courses designed for the intellectually apt who have not taken full advantage of their past educational opportunities.

Courses starting the week of October 15th

- Pre-College Study—Mon. & Wed. 7 P.M. 8 Weeks \$15.00
- Pre-College Mathematics—Sat. 9 A.M.-12 (2 parts) \$10.00
- Pre-College Composition—Mon. & Wed. 7:30, 8 Weeks \$30.00
- Junior High Study Skills—Mon. & Wed. 1:30, 8 Weeks \$10.00
- Individual Instruction and Educational Testing Available

Enrollment is limited—Registration October 15, 7 P.M.

For Brochure write or call

MAPLEHILL EDUCATION DEVELOPMENT CENTER
 287 Oakland Avenue Birmingham, Michigan
 Phone MI 6-9575

some of the most beautiful homes in michigan have been carpeted by

thos. w. walsh & co.
 FLOOR COVERING SPECIALISTS

Fine quality is a sound investment that interprets your way of living, your personal good taste. You pay no premium for the beautiful assortments and custom service you find at Walsh's.

CALL WO 5-2930 FOR ESTIMATES
 1000 E. Jefferson Detroit 7

Factory Built FIREPLACES

MORE PLEASURE

For your "HEARTH" Desires

Firehood
 (The Colonial Fireplace)

Friends and family will find more hours of enjoyment in your fireplace when you have a Firehood in your fireplace. The Firehood is a decorative screen that fits into any fireplace, at the hearth or on the wall. It is made of heavy metal and is available in many colors and finishes.

EASY TO INSTALL
 You can do it yourself in a week end. You simply cut a hole in the wall, set the Firehood and which in place and there you are enjoying the pleasure of your new fireplace.

See Our Display Today!

DONDERO SASH AND SCREEN
 1523 N. MAIN, ROYAL OAK SOUTH OF 12 MILE — LI 5400 MON. THRU FRI. 9:30 TO 5:30 SAT. TILL 3:30

Combination ALUMINUM STORMS Installed For You

WINDOWS \$12.85 DOORS \$35.50

WOODCRAFT COMPANY
 Serving Satisfied Customers Since 1923
 1184 Grant, S. of Lincoln MI 4-0424