

The Detroit - Chicago Freeway was known as Interstate 92 under the original interstate highway numbering plan. It was later changed to I-94. The Detroit-Muskegon Freeway given the I - 94 number in the original plan, but this was changed to I-96, which it is known as today.

Potpourri

(Continued from 1-D)

A FORMER instructor in Monteth College at Wayne State University, the bearded and brainy Mr. C. is now program director at WPTM. He and his attractive wife live at 415 Merrill, Birmingham.

Looking at what's ahead in our local world of the arts, I predict for this week: "The Gazebo", a mystery-comedy, by Alec Coppel, opening at the Chestnut Street Playhouse of The Village Players at 9 p.m., Friday, Oct. 5.

Pat (Mrs. Don) Morris is type cast as a television performer (she's on WXYZ-TV), "Gazebo" actor Walter F. Skinner has been acting in Village Players productions for 22 years.

"The Gazebo" will be performed again Saturday, Oct. 6, as well as Friday and Saturday of the following week.

YOU HAVE just eight more days (until Oct. 12) to sign up for the writers' conference at MSUO on Saturday, Oct. 20.

It's called "The Craftsmanship of Creative Writing." Co-chairman Priscilla (Mrs. Walter N.) Jackson assures me it will delve realistically into the production problems of all us human word factories, striving to eliminate bottlenecks caused by blank sheets of white paper. More about this one next week.

Another safe prediction for this week is that if you don't get over to Little Gallery by 6 p.m. Saturday, you're going to miss out on the exhibition of paintings by Jean Lamoureux and Joseph DeFrancesco, unless you've already seen them.

There's still plenty of time, though, to see "Fabrics International" and rugs and tapestries by Glen Kaufman, at the Cranbrook Academy of Art galleries. Every day but Monday, from 2 to 5 p.m., through Oct. 21.

Musicale

(Continued from 1-D)

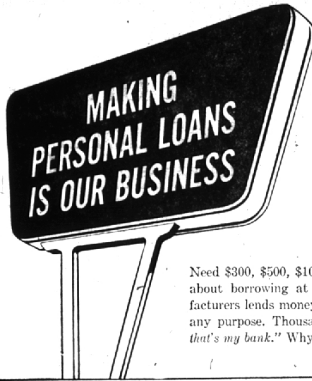
umbia University in New York and at Wayne State University in Detroit. He organized and conducted the Allen Park Symphony and conducted the Scandinavian Symphony from 1955-1959. He is currently conductor of the Inter-

October 4, 1962 THE BIRMINGHAM (MICH.) ECCENTRIC 7-D

national Symphony of Sarnia and Nancy also plays the viola and is a member of the Madrigal Choir.

Also appearing on the program and Concerts Choir as well as the 17-year old Nancy is a member where she is a junior.

Her mother, Mrs. W. A. Wilson of Birmingham Musicale's Junior group. One of the Musicale's six (27072 Belmont Lane, Southfield), 1962 Junior Scholarship winners, she attended Interlochen Music's a member of the Birmingham Camp this past summer. Musicale (Senior group).



Need \$300, \$500, \$1000 or more? Don't be bashful about borrowing at Manufacturers Bank. Manufacturers lends money to most any person for most any purpose. Thousands say, "Manufacturers... that's my bank." Why not make it yours?

MANUFACTURERS NATIONAL BANK

1012 N. Hunter Blvd., Bloomfield Twp. Woodward N. at Wellesley, Pleasant Ridge
4057 West Maple Road near Telegraph, Bloomfield. Telephone near Ten Mile Road W., Southfield

GOODWIN'S
Mr. COMFORT

THINGS ABOUT IT YOU SHOULD KNOW

AUTOMATIC COST IS LOW

IN-THE-WALL GAS HEAT

Goodwin's
HOME COMFORT SERVICE
Phone MI 7-1111
DIO N. WOODWARD BIRMINGHAM, MICH.

POTTER
Moving & Storage Co.

no. 1 specialist in storage!

agent of

POTTER
Moving & Storage Co.
2258 COLE MI 4-4612
No. 1 on U.S. Highways
No. 1 in Service
No. 1 in Your Community

Composites

(Continued from 5-D)

Now, in the season of "mellow fruitfulness," asters bloom rampant from the white woodland species through all the shades of lilac and violet to the deepest purple of the New England variety. The latter is abundant in fields and roadsides and its large flowers are so decorative that it is often cultivated in gardens.

THE HEART-LEAVED aster is easily recognized by the shape of its leaves. Its abundant flowers are pale lilac.

The large-leaved aster is conspicuous throughout the summer but its sparse flowers were a disappointment to me when as a student I watched my first plant come into bloom.

The heath or Michaelmas aster has an abundance of tiny white blooms with many small linear leaves. This plant has spread widely through its cultivation by bee keepers for its abundant nectar.

ASTERS ARE a life-time study and only the specialist can name each of the many species which cover the autumn landscape like smoke upon the hills.

While cooperation is the most conspicuous feature of the composites, they also afford outstanding evidence of the divisions of

labor, of the conservation of energy and material and of increased parental care. These might furnish many an object lesson for man in his great task of converting human communities into effective cooperative units.

class 3000 with motor - \$6500 (used for Motor's)

New 3600H

Motor announces three new wagons

Comet introduces two jaunty convertibles

Extra roomy trunk for all Mercury car lines

New Lightning 200 V-8 available for Mercurys

Complete-mounted gear shift standard on hardtop and Marauder S-22

New Rotospark, roof for the elegant Marauder

Self-adjusting brakes for all Mercurys

Two-Year Warranty

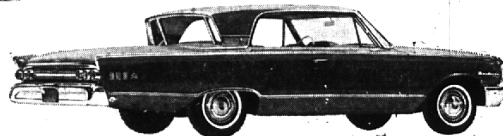
Or 24,000 miles, whichever comes first

Now all Mercurys have 2-year, 24,000-mile warranty backed by Lincoln Continental on 1961 model

Motor introduces two new hardtops

New 1963 Ford models for each Mercury line

BURSTING WITH NEWS... '63 MERCURYS



NEWS-MAKING ROOF FROM MONTEREY. The advantages of Monterey's distinctive styling go far beyond its beauty. This is elegance that works. See how the recessed rear window slants inward? It stays clearer in rain or snow. On hot days, it

opens for breezeway ventilation. The overhanging roof shades rear-seat passengers from the sun, gives more headroom, keeps glare off the rear window for better rearview visibility. More good news: a Mercury Marauder 390 V-8 is Monterey's standard engine.



SPARKLING NEW MODELS FROM METEOR. For 1963, Meteor is the hot brand. Meteor is the sparkler with a whole new line of models in the low-price field—sleek new low-to-the-road hardtops, sedans, and three new station wagons. Feel sporty?

Try the racy Meteor S-33 hardtop, with individually adjustable bucket seats and a handy console. For brilliant performance to match Meteor's sparkle, a new Lightning V-8 is available in every model. And you save on upkeep with Mercury service-savers.



THE LID'S OFF COMET. Now a jaunty new convertible joins Comet's all-fun line. This sleek, rakish beauty comes in two models: the Custom and the dashing S-22, with bucket seats and optional shift stick. All Comets now have a complete package of

service-savers like self-adjusting brakes. And Comet still heads its class with the largest trunk, longest wheelbase, and best resale value record. See Comet's whole happy '63 line-up: convertibles, sedans, station wagons. Fun-test your favorite Comet now!

COMET - METEOR - MONTEREY: PRODUCTS OF LINCOLN-MERCURY DIVISION

First showing '63 MERCURYS... at these showrooms

BOB BORST LINCOLN-MERCURY, Inc.

479 South Woodward, Birmingham, Michigan

582-6450

One Phone Call Does It All...

... Especially here in Birmingham where seven new home service firms have joined with State Home Service Bureau. They bring to your doorstep the answers to a host of common household needs and problems.

Remember that the Bureau is a completely reliable, free referral agency. Your call to 582-6450 will start a Bureau representative on his way to your home. There is no obligation for this service, and you'll find the service charges of Bureau representatives are more than fair by any comparison. So for any of 125 home service needs, call the Bureau collect—that's 582-6450. And remember, these outstanding firms now serve you from your neighborhood:

- Torrence Oil Co. (Heating)
- Glenn C. Waggoner (Construction)
- Berkley Moving & Storage
- Ralph Lantes (Painter)
- Jamie Meelin (Real Estate)
- Van's Plumbing & Heating
- American Pest Control



STATE HOME SERVICE BUREAU

Telephone 582-6450