

Attend Convention On Speech Defects In New York City

Roger Lindroth, head of speech correction schools in the Birmingham area, was a panel member at the annual convention of the American Speech and Hearing Association in New York last week. Dr. Gerald G. Freeman, speech pathologist for the Oakland County Board of Education, spoke Sunday.

Alison M. Roe, specialist in the correction of stuttering for the Oakland County Board of Education, was a panel member at the convention.

Six Oakland County specialists in speech correction appeared at the annual convention of the American Speech and Hearing Association in New York last week. Dr. Gerald G. Freeman, speech pathologist for the Oakland County Board of Education, was a panel member at the convention. Mrs. Ila Mae Roback, of chairman of a panel on expanding the clinical approach to speech correction in the schools while delivered papers at the convention.

Cultural Events

(Continued from 1-D)

is part of the MSUO lecture-concert series.

BROTHER RICE—The Mothers Club of Brother Rice High School, in cooperation with the St. Columban Players will present a musical production called "1928 and All That Jazz" in the Brother Rice auditorium at 8:15 p.m.

FRANKLIN VILLAGE PLAYERS—The Franklin Players will present "You Can't Take It With You" at 8:30 p.m. in the Farmington Players' Barn, on 12 Mile Road west of Orchard Lake Road.

VILLAGE PLAYERS—"Once Upon a Mattress" held over by the Village Players at their playhouse, 1752 Chestnut Street, Birmingham beginning at 9 p.m.

LATHRUP VILLAGE PLAYERS—The Lathrup Village Players will present "Little Nell, the Orphan Girl" at the Community Congregational Church, 11 1/2 Mile and Southfield, beginning at 8:30 p.m.

Dec. 1
CRANBROOK—Student Christmas sale and exhibit at The Cranbrook Galleries from 2 to 5 p.m.

FRANKLIN VILLAGE PLAYERS—The Franklin Village Players will present "You Can't Take It With You" at 8:30 p.m. in the Farmington Players' Barn, on 12 Mile Road west of Orchard Lake Road.

BROTHER RICE—The Mothers Club of Brother Rice High School, in cooperation with the St. Columban Players will present a musical production called "1928 and All That Jazz" in the Brother Rice auditorium at 8:15 p.m.

VILLAGE PLAYERS—Last night of "Once Upon a Mattress," presented by the Birmingham Village Players at their playhouse, 1752 Chestnut, Birmingham, beginning at 9 p.m.

Dec. 2
BIRMINGHAM ART CENTER—BAA members show opens at the Art Center, 1516 S. Cranbrook Road, Birmingham. The show will continue through Dec. 30. Hours are 2 to 5 p.m. daily except Mondays.

KIRK-IN-THE-HILLS—"The Messiah" will be presented by Kirk soloists, choir, organ and orchestra, with Philip Steinhaus conducting at Kirk-in-the-Hills, Long Lake Road west of Telegraph, Bloomfield Township. The concert begins at 4 p.m.

CRANBROOK—Student Christmas sale and exhibit at Cranbrook galleries from 2 to 5 p.m.

Dec. 3
DUPLICATE BRIDGE—Duplicate Bridge at the Community House at 7:45 p.m. Open to public.

Dec. 4
OPERETTA—One night only, "Chocolate Soldier" with Nelson Eddy and Rise Stevens at the Bloomfield Theater, 7:45 and 9:40 p.m.

BRIDGE—Tuesday Birmingham Duplicate at 2424 Manchester beginning at 1 p.m. Open to public.

Dec. 5
VILLAGE WOMAN'S CLUB—A program of Baroque art and music will be presented to members and their guests at the Village Woman's Club, Long Lake Road, by Dr. and Mrs. Ernst Scheyer beginning at 2 p.m.

GARDEN CLUB CHRISTMAS SHOW—Garden Club Christmas Show at the Birmingham Community House from 9 a.m. to 9 p.m. Open to public.

BRIDGE—Birmingham Duplicate at the YMCA, 400 E. Lincoln, at 7:45 p.m. Open to public.

Dec. 6
GARDEN CLUB CHRISTMAS SHOW—Garden Club Christmas Show at the Birmingham Community House from 9 a.m. to 9 p.m. Open to public.

BRIDGE—Birmingham Duplicate at the YMCA, 400 E. Lincoln, at 7:45 p.m. Open to public.

Dec. 7
BLOOMFIELD ART ASSOCIATION—Two Van Gogh films to be shown at the Birmingham Art Center, 1516 S. Cranbrook Road, in conjunction with the opening of the Van Gogh exhibition at the Detroit Institute of Arts. Movies will begin at 8:30 p.m. Open to public.

TRAVELOG—Mildred Capron will tell of "Chesapeake Bay Adventure" at the Birmingham Community House beginning at 8 p.m.

Dec. 8
CRANBROOK—Student Christmas sale and exhibit at the Cranbrook galleries (on the Cranbrook grounds, Lone Pine Road, Bloomfield Hills). Hours are 2 to 5 p.m.

TRAVELOG—Mildred Capron tells of "Chesapeake Bay Adventure" at the Birmingham Community House at 8 p.m.

LITTLE GALLERY—Last day of exhibition of prints which is the fifth in a series entitled "The Artist as a Printmaker" at the Little Gallery, 915 E. Maple, Birmingham. Hours are 9 a.m. to 6 p.m.

Dec. 9
SOUTH OAKLAND SYMPHONY ORCHESTRA—Second concert of season for orchestra. Will be given with the Contemporary Civic Ballet at the Oak Park High School auditorium beginning at 3:15 p.m. Guest conductor will be James Tamburini.

CHRIST CHURCH CRANBROOK—The Kingswood School Cranbrook and Cranbrook School glee clubs will present "The Messiah" at Christ Church Cranbrook, Cranbrook and Lone Pine roads, Bloomfield Hills, beginning at 4:30 p.m.

CRANBROOK—Last day of student Christmas sale and exhibit at the Cranbrook galleries (on the Cranbrook grounds, Lone Pine Road, Bloomfield Hills). Hours are 2 to 5 p.m.

Dec. 10
DUPLICATE BRIDGE—Duplicate Bridge at the Birmingham Community House at 7:45 p.m. Open to public.

Dec. 11
OPERETTA—One night only, "Sweethearts" with Jeanette MacDonald and Nelson Eddy at the Bloomfield Theater.

BRIDGE—Tuesday Birmingham Duplicate at 2424 Manchester beginning at 1 p.m. Open to public.

Dec. 12
COLORING CONTEST—Last day to send in entries for The Eccentric's Christmas Coloring Contest. Must be mailed or delivered to The Birmingham Eccentric, 1225 Bowers, Birmingham.

BRIDGE—Birmingham Duplicate at the YMCA, 400 E. Lincoln, at 7:45 p.m. Open to public.

Dec. 13
BRIDGE—Birmingham Duplicate at the YMCA, 400 E. Lincoln, at 7:45 p.m. Open to public.

"Messiah" Planned For Vesper Series At Local Church

"The Messiah" will be presented at 4 p.m., Sunday, December 2 at Kirk-in-the-Hills, at 1340 Long Lake Road, Bloomfield Township.

Sixteen voices of the Kirk Chancel Choir will be accompanied by the organ and string orchestra in the presentation of G. F. Handel's Christmas composition. Dr. Philip Steinhaus, organist, choirmaster and carillonneur at the Kirk, will conduct this second program in the Kirk's 1962-63 series of Sunday Vesper services.

Kent McDonald will be at the console of the Kirk's organ. Featured soloists will include Margaret Ebert, soprano; Alice Stenz, contralto; Charles Wingert, tenor, and Fred Burnett, baritone.

Multiple exposure . . . now you can run a Classified Ad 3 times for only \$2.70 (non-business, up to 15 words, cash rate). Dial Midwest 4-1100 now for fast results.

APTITUDE TESTS
 enable you to learn the kind of work in which you can best succeed, the studies for men, women, boys and girls.

Vocation Counseling Institute
 David L. Beck, Director
 212 Fox Theatre Bldg.
 2 Bldg. N. of Capitol Circle Park
 17 Years Service Detroit
 (Formerly in Macomb Bldg.)

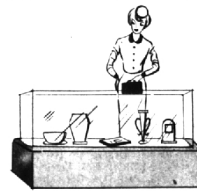
BIRMINGHAM FINANCE CO.
 114 S. Woodward
 Room 1, Second Floor
 Quick, Friendly Service
LOANS \$25 to \$500
 MI 6-3350

Birmingham Student Featured Violinist At Albion Performance

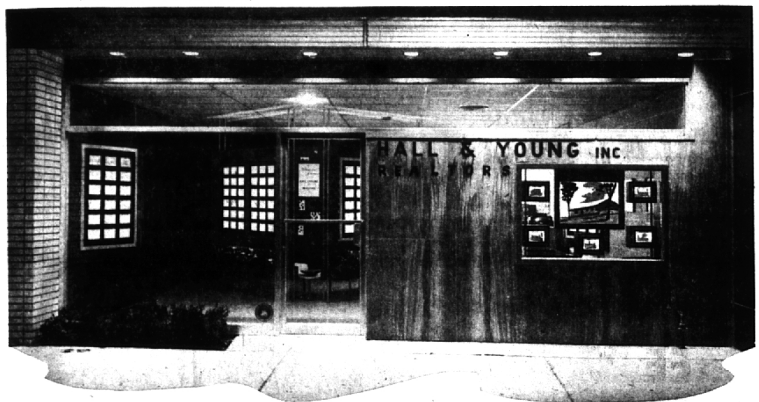
Michael Von Guttenberg, son of Albion College campus. Mr. and Mrs. Wolf Von Guttenberg, of 1562 Bates, Birmingham, bion, was part of the program Albion student members of Sigma Phi Mu Alpha recent American Composers' Concertual solos, a choir selection in Goodrich Chapel on the and a performance by the Albion ties for women and men.

College Brass Quintet. The concert was sponsored by Albion student members of Sigma Phi Mu Alpha and Phi Mu Alpha national musical fraternities for women and men.

MARK WESSEL
 • Pianist • Composer • Teacher
 Studio at 3515 Old Indian Trail, Orchard Lake
 Phone 682-1452



TAKE A TIP FROM RETAILERS
"Showcase" your home
 for Customers to See!



Mr. and Mrs. Seller . . .

You can well imagine how many more potential buyers SEE your home everyday when you have it SHOWCASED. Both modern Showcase of homes Merchandising Centers have proven so successful that new homes to display . . . and sell . . . are in constant demand. Customers like to see before they buy! Showcase of homes makes sure your home is seen!!



Slides in sparkling color highlight your home—command buyer attention! Every home featured in BOTH Hall & Young Showcase Centers.

ANOTHER PROGRESSIVE, NO-COST SERVICE OF . . .

Showcase of homes
HALL & YOUNG INC. REALTORS

In Birmingham: 345 S. Woodward Ave. MI 6-7900
 In Bloomfield: 4114 W. Maple Road MA 6-5900

DECEMBER DIALECTICS
 (Dialectics; the principles of logic)

1. Winter MULCH is applied to perennial beds, tulip beds, roses, etc. NOT to keep the ground from freezing but to keep it from alternately thawing and freezing in the late winter. Therefore, apply it AFTER the ground is frozen to a depth of 2 or 3 inches.
 Best materials are MARSH HAY, PEAT MOSS, TERRALITE, TERRALITE ROSE MULCH, BUCK-WHEAT HULLS and STRAW.
2. NO ONE likes to get his feet into glue or other sticky stuff. Neither do SQUIRRELS—so we sprayed a few feet of apple tree branch leading to our feeder (also the suspending cord or wire). It is a picnic—as well as being a SUCCESS. The monkeys—or rather the squirrels—try it and then start cleaning their feet. Believe it or not they then go hunting in the lawn for the peanuts the blue jays have hidden there. They even find a few.
 (There is a Spray—on Tanglefoot, which we used, and a paste which is even better.)
4. RABBIT DAMAGE to woody plants can be prevented by protecting same with TREE WRAP, HARDWARE CLOTH, PETER RABBIT REPELLENT (this one is to repel Peter Rabbit) are the most effective materials. We are probably the only store in Oakland County that carries these items (not dialectically true).
5. CHRISTMAS has finally come to our store and we hope you will, also. Titillating possibilities include:—SMALL CAST STONE BIRDS, ANIMALS AND PIXIES FOR THE GARDEN. APOTHECARY CANDLE JARS — Bayberry or Pine-smell.
 LONG MATCHES for timid fire lighters. GYPSY FIRE to provide color in the flames. HAND PAINTED WATERING CANS. CERAMIC birds and figures. MADONNAS and ANGELS — enough for another planet.
 Fantastic BIRD CAGES for a modest, gay effect. JUST TAKE 1 cookie jar. MORE next week.
6. If geraniums are to bloom in the winter they should have direct sunlight all day and 70 to 75 degrees of old SOL heat.

A WONDERFUL CHRISTMAS PRESENT IMPORTED HOLLAND AMARYLLIS BULB. They are priced at \$4.60 each and give a hundred dollar's worth of beauty and excitement.

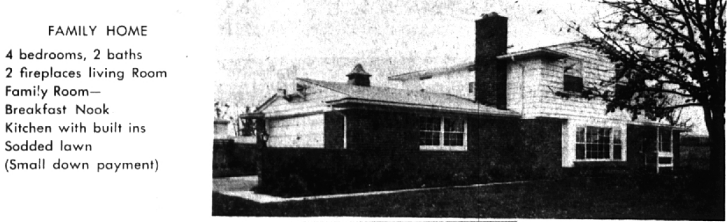
8. A SUPERB gift for shut-ins is a small dish embedded with 3, 5 or 7 PAPER-LIKE NARCISSI. They bloom in about 41 days and fill a room with their beauty and a home with their fragrance. They are 17c each and \$1.70 a dozen.
9. STRAWBERRY plants should be mulched with MARSH HAY NOW.
10. Newly planted evergreens should be protected with BURLAP screens or something from wind blast.
- 10(a). LECTURE - DEMONSTRATIONS
 HOW TO PLAN AND HOW TO MAKE CHRISTMAS DECORATIONS
 DECEMBER 1st AND 8th
 AT 10:00 A.M. and 2:00 P.M. on Each Day REFRESHMENTS ON THE HOUSE
11. Thank you for reading this—if you did.

McCLELLAN-BALL CO.
Everything for the Yard and Garden
 860 S. WOODWARD, BIRMINGHAM, MICH.
 FREE AREA DELIVERY MIDWEST 4-4113

WHEREVER BUSINESS TAKES YOU PIERCE homes provide the inspiration you need

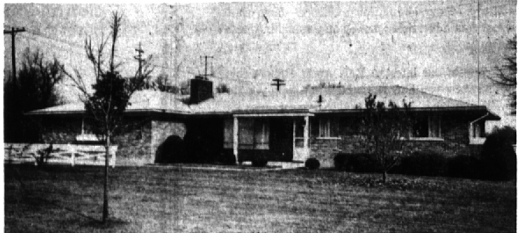


GLENMEAD
 Country Estate
 3 Acres
 3 bedrooms, 2 baths
 Living Room with pegged floor
 Separate Dining Room
 Family Room
 Kitchen with built-in dishwasher, oven-range, etc.
 (Financing available with low down payment)



FAMILY HOME
 4 bedrooms, 2 baths
 2 fireplace living Room
 Family Room—Breakfast Nook
 Kitchen with built ins
 Sodded lawn
 (Small down payment)

HAVERFORD
 3 bedrooms, 1 1/2 baths
 Slate Entry
 Ledge Rock fireplace
 Separate Dining Room
 Panelled Family Room
 Kitchen with GE built-ins
 Intercom
 Marble Sills



FRED PIERCE INC.
 460 NORTH WOODWARD, BIRMINGHAM, MICH.
 Midwest 7-1414