

# It Is a Township Resident Who Proposes Development

To the Editor:

Your Nov. 1 issue carried two letters commenting on an earlier editorial with respect to rezoning of property on Woodward Ave. between Manor and Big Beaver roads.

We are writing, in the first instance, to correct misstatements of fact made in these communications.

The most inaccurate of these statements, perhaps, is the suggestion that "outsider promoters" are involved in this rezoning effort. The land owner involved, Marvin Danto, has resided for many years in Bloomfield Township at 5280 Brookdale. It is this township resident who proposes this entire project.

IT IS MY advice, as counsel to Mr. Danto, that the Zoning Ordinance is concerned, as stated in its Preamble, with the public health, safety, peace, morals, comfort, convenience and general welfare of all of the inhabitants of the Township of Bloomfield, some 25,000 persons, and that while they are a factor, the desires of immediate neighbors are one among numerous relevant factors.

Since what I presume were the dates of the communications to which I referred, we have met with persons interested in the Rouge Manor Improvement Association,

Inc., including the authors of your two letters.

WE HAVE detailed to them the plans for this project and of the maintaining by the owner of strict control of it so that there will be no adverse effect on anyone near to or far from the property involved.

We have attempted to make clear, I hope successfully, that failure to maintain such strict control would make the project itself a failure and make going forward with it economic nonsense. We believe the inaccuracies in these two letters have been corrected in the minds of their authors and should not recur.

WE FEEL that these communications you have received shed more heat than light on this situation. Specifically, we commend your paper for considering our efforts and expressing your views in your editorial.

We do not share the suggestion that your motives are other than one of public service to the 25,000 citizens of Bloomfield Township and the equal number of the City of Birmingham.

We are more than interested in communicating to anyone concerned about the facts of the project involved here precisely what our plans, purposes and intentions are.

Our wish is that if there are dif-

ferences with respect to the need in this area for a project such as is contemplated, these differences be discussed on the basis of the facts

## Detroit Girl, 16, Is Critically Hurt In 2-Car Crash

A 16-year-old Detroit girl was in critical condition Tuesday morning following a two-car collision in which she was thrown from the car in which she was a passenger

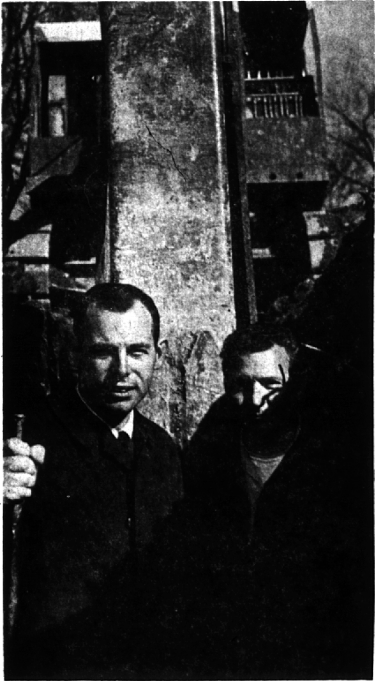
involved, and not imaginary and unjustified fears as to what might be done.

Miller, Canfield, Paddock and Stone  
BY JOHN A. GILRAY, JR.

struck by one driven by Thomas L. McNaughton, 24, of Clarkston. McNaughton was driving south on Telegraph.

The University of Michigan has more contracts with the National Aeronautics and Space Administration than any other school.

Looking for a job... a home... a special service? See the Want Ads.



**Digging In**

Work is well underway on Lathrup's \$525,000 storm sewer project. City Administrator Jerald Stone (left), and Assistant DPW Supervisor Ross L. Andrus do a bit of inspecting in an excavation on Lathrup Boulevard near Sunset as power shovels and other equipment are brought into play to install the sewer pipes. The system will service the whole city and is scheduled for completion by winter's end.

## ABSOLUTE DUSTLESS CLEANING . . . MORE HEALTHFUL LIVING!



**Vacu-Flo**

### BUILT-IN SYSTEMS INTRODUCE NEW ERA IN VACUUMING . . .

What could be more practical, more simple, than just plugging your hose into convenient built-in wall inlets for the easiest, fastest and most powerful dustless cleaning. You can have it now with Vacu-Flo in your present or new home.

No need to lift, lug or tug a heavy machine and cord around the house. Vacu-Flo's ingenious free-flowing tube system is attached to a super powered vacuum producing machine mounted in garage, basement, utility room, etc., out of living area for quiet operation. Dust and dirt collects at this point in the large receptacle. You've just got to see it and experience this new modern convenience and find out how little it costs.

### THE SAME WALL INLET VALVE PROVIDES TWO HOME SAFETY GUARDS.

Built-in prowler protection and fire detection units are also available as a part of your Vacu-Flow Built-In Cleaning System.

### SEE VACU-FLO IN ACTION!

The following builders or dealers can demonstrate actual Vacu-Flo installations—see one today or phone or write for descriptive literature. Convenient budget plan payments available make Vacu-Flo easy to own.

### VACU-FLO SALES DIVISION

Grover Transitsubs of Mich., Inc.  
26416 W. SEVEN MILE RD.  
DETROIT 40, MICH.  
PHONE 535-8510

## Citizens

(Continued from 1-A)

rather than elective were that the administration of the duties would flow more smoothly and that they would not have to give a new clerk "on-the-spot" training every two years or whenever a new one is elected.

Shepherd pointed out that this amendment had been discussed for the past year. He said many meetings have been held on it by the charter amendment committee previous to the drafting of the resolution as requested at the Nov. 5 council meeting.

COUNCILMAN Hugh G. Allerton, Jr., spelled out the duties of the clerk as contained in the charter and made the statement that they would remain the same, unless added to.

"The clerk will fulfill the same duties, but we'll have better coordination," Councilman Chester A. Guilmet stated. Guilmet admitted that he had been strongly in favor of an elective clerk during the drawing up of the charter, but now felt that an appointive clerk would simplify the administration of the village.

OLIVER C. Lillie, president of the West Beverly Hills Association (and also a planning commission member) said, "I think you gentlemen of the council should consider this: the very fact that this is an elective office is something you should be proud of. You may not think we need this, but we do."

Jack Stuart, also of the planning commission, stated that while in many villages they do appoint the clerk, as had been brought out in the discussion, there is usually a full-time elected official in the office.

IN RESPONSE to a question as to whether putting this on the ballot now was a reflection on the village clerk, the council stated that it would not affect the present clerk, who will serve out her elected term until March, 1964.

Many requests were made to spell out the resolution and its purpose. Harry L. Murray, 31668 Nixon Road, asked whether it was not the legal duty of an elected official to mention any outside holdings which would provide a conflict of interest. However, he declined to clarify or be specific about what he meant in raising the question.

Six councilmen voted to lay the resolution on the table, and Councilman Edward M. (Ted) Shurtliff voted against it.

KAY SMITH

Few history books mention him but the first successful orbiter of the earth was sea captain Sebastian Del Cano, a native of Spain. He was a member of the exploratory expedition launched by Ferdinand Magellan in 1519 to circumnavigate the globe. When Magellan died, Del Cano took command and completed the voyage. Little is known about the world's Number One orbiter other than that he was born in Spain around 1460 and died in the Pacific on another voyage of exploration in 1526.

# THE WORLD'S FINEST BROADLOOM AT THE WORLD'S LOWEST PRICES

Here's the finest carpet money can buy at prices you never dreamed possible. This is a perfect opportunity to dress up your home for the forthcoming holidays and for years to come! We can't mention the name of this famous maker, but you'll recognize it on sight—it's the world's best in our opinion! Choose from mill trills of all wool plush piles, self-tones, loop weaves, twist weaves and lush shaggy effects in a color spectrum that will dazzle you.

SAVE **\$3** TO **\$5** PER SQ. YD.



**WHAT FAMOUS BRAND**

We can't mention the name—but you'll recognize it on sight. This maker's quality features and color range is acclaimed to be the best by the nation's top decorators.

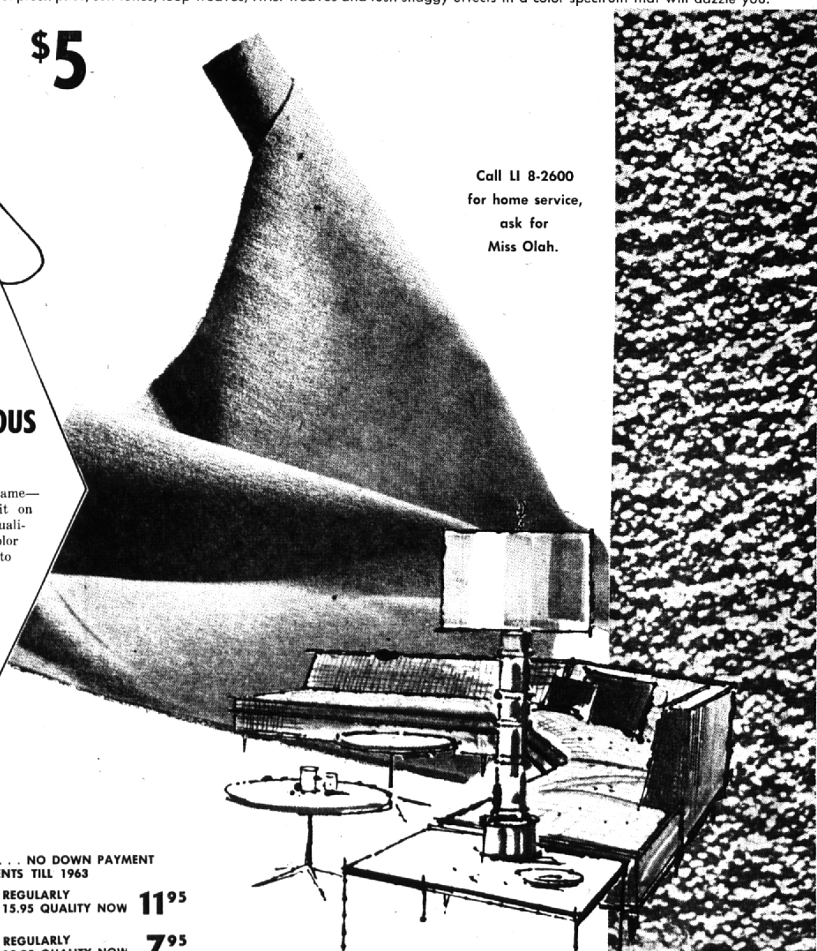
ENJOY TRIANGLE QUALITY . . . NO DOWN PAYMENT . . . NO PAYMENTS TILL 1963

REGULARLY 11.95	QUALITY NOW <b>8<sup>95</sup></b>	REGULARLY 15.95	QUALITY NOW <b>11<sup>95</sup></b>
REGULARLY 12.95	QUALITY NOW <b>9<sup>95</sup></b>	REGULARLY 10.95	QUALITY NOW <b>7<sup>95</sup></b>
REGULARLY 13.95	QUALITY NOW <b>10<sup>95</sup></b>	REGULARLY 16.95	QUALITY NOW <b>12<sup>95</sup></b>

REGULARLY \$20 QUALITY NOW **15<sup>95</sup>**

### IMPORTED ALL WOOL PLUSH BROADLOOM

A FULL 1/2" THICK . . . Reg. 14.95 sq. yd.  
• TOAST • CHAMPAGNE • RUSTIC ORANGE **9<sup>95</sup>**  
• BEIGE • CAPRI BLUE



Call LI 8-2600 for home service, ask for Miss Olah.



818 NORTH WOODWARD AVENUE at 1 1/2 MILE RD. OPEN EVERY EVENING TILL 9:00