

DRAMATIC—You'll be pleasantly surprised at the many ideas that spell openness of contemporary living and yet lend privacy when desired. The glass-wall living room has soaring studio ceilings, and an impressive brick fireplace wall. There are 3 well-planned bedrooms, 2 1/2 baths, "scenic-view" family room of kitchen plus huge "ballroom-size" recreation room on lower level, and att. 2 car garage. FINE! \$37,500.

OPEN 'TIL 9 P.M.

Showcase of homes
HALL & YOUNG INC. REALTORS

BIRMINGHAM
345 S. Woodward
MI 6-7900

BLOOMFIELD
4114 W. Maple
MA 6-5900

BRIDGE in BIRMINGHAM

By **BUD MAYBRAUM**
Southern Michigan
Bridge Association

The recent sectional bridge tournament held at the Detroit Leland Hotel was well attended by Birmingham Players. It was a gala affair saddened only by the death of our member of the board of directors, Clyde Morrison.

My favorite person and partner from Birmingham, Ed Clarke, attended this tournament and again displayed his talent at the game. Today's hand played by Ed shows why he is the master of the end play and how to get the maximum from a hand.

East and West vulnerable.

NORTH
▲ A 10 8 7
♦ K 4
♥ A Q 8 7
♠ A 7 2

WEST **EAST**
▲ 9 5 ♥ K Q 6 2
♦ J 8 7 3 2 ♥ A Q 6 5
♥ K 5 3 2 ♦ 10 6 4
♠ 10 5 ♠ K Q

SOUTH
(dealer) (Ed Clarke)
▲ J 4 3
♦ 10 9
♥ J 9
♠ J 9 8 6 4 3

The bidding:
South West North East
1 pass 1 NT pass
2 ♠ pass 2 ♠ pass
3 ♠ all pass
Opening lead: 9 ♠.
Ed Clarke was playing Claret Stayman, and the response to one no trump of two clubs is non-forcing.

North's bid of two spades is the usual showing of the four card major, but Ed's bid of three clubs tells his partner that they have no game in the hand and that clubs is the suit.

IN ORDER to use the end play successfully, one must place most every card.

West's opening lead told Ed that he had two spades and that the nine was the top, so Ed covered the nine with the ten, allowing East to win with the Queen.

East knew that most any play would give Ed an additional trick, so he returned the king of clubs. Ed won this trick in the closed hand and returned the duke of club and again East was in.

Being in the same fix, he decided to play the four of diamonds. Ed played the nine and North took East's king with the Ace.

Ed now could see the light, so he returned to his hand with a diamond lead. He now played a low spade to the ace, and, on the ace of diamonds, he discarded his remaining spade.

Now he played the eight of spades and when East covered, Ed trumped and returned to the board

with a low club to the seven. On the high spade and high diamond, Ed discarded his two hearts and made a top board of five clubs, stealing East's ace of hearts.

RECENT Birmingham winners include Pat Sherfler and Grace Stone; Maxine Seaman and Betty Mosher; Ed Clarke and George Alderton III; Elva Berkema and Nancy Detlinger; C. Teager and Steve Taylor; Hilda Murphy and Frank Sparks; Goldie Beal and Helen Boothman; Max and Maxine Morden.

Don't forget this is your last notice to play in the regional bridge tournament in Toledo. Next chance to play in a red point tournament in this area will be in Lansing in spring and Detroit a year from now. A report of Birmingham activity at this tournament will be reported here shortly.

Local Best Sellers

Fiction
NO RED RIBBONS—John Quirk
A SHADE OF DIFFERENCE — Alan Drury
SEVEN DAYS IN MAY — Fletcher Knebel and Charles Bailey

Nonfiction
TRAVELS WITH CHARLEY — John Steinbeck
SILENT SPRING—Rachel Carson
A YE JIGS AND JULEPS — Virginia Hudson

MSUO Sculpture Prize Goes to Tex Schiwetz

A design by Berthold (Tex) Schiwetz, former head of sculpture art at the Cranbrook Academy of Art, was selected for Michigan State University Oakland's Sculpture Award, given in connection with MSUO's first annual Symposium on the Arts.

Schiwetz' free form sculpture will be done in Travertine marble on which 19 to 25 cast bronze birds will be placed. The sculpture will be placed in a garden and reflecting pool setting on the MSUO campus.

Schiwetz, who held his Cranbrook position for six years, and was a resident artist there for 20 years, resigned in July to set up a studio in Florence, Italy; where he now is concentrating on the sculpturing of fountains and the preparation of works for a second one-man show in New York.

Art Critic Offers 'A Critic's View'

Morley Driver, Free Press art critic, will speak on "A Critic's View of Art Criticism" at 8:30 p.m., Friday, at the Birmingham Art Center.

Mrs. Driver will soon leave for the Orient on a grant from the Archives of American Art. She will spend a year in Bangkok, Thailand. The public is invited to the lecture which is sponsored by the Bloomfield Art Association.

Detroit Institute of Arts, was chairman of the painting jury and made the announcement. Also on the jury were Mrs. Harry Winston Jr., Mrs. William J. Poplack, Dean Matthews and Professor Galloway.

ALL THE MODELS entered in the competition are on display in the newly opened MSUO art gallery in North Foundation Hall, Willis F. Woods, director of the

GOLD COINS

are collectors' items - not

many are available!

Overbrook* will have

only 66 families!

MAX BROOCK INC.

MI 4-6700

*West Long Lake and Lahser Roads



The Setting Is Superb

Perched on the brink of a deep, heavily wooded gulley affording all the charm of the back country yet located in the very center of Birmingham, this delightful bi-level ranch is a surprise to everyone.

Entrance is at ground level into a huge reception hall with facilities for dining. This leads to a wonderful living room with a large picture window looking out into the trees.

Tree tops and down to a winding brook. There are two big bedrooms on this upper level. The lower level is similar with a big family room opening on a screened porch and two more bedrooms. There is a full bath on each floor. You really must see this house—why not call for an appointment. Oh yes, the price is only \$45,000.

Walsh, James & Wasey Co.

Realtors Since 1918
431 S. Woodward Ave.
Birmingham

Midwest 4-6500
Detroit, JO 4-6033

WHEREVER BUSINESS TAKES YOU PIERCE homes provide the background you need



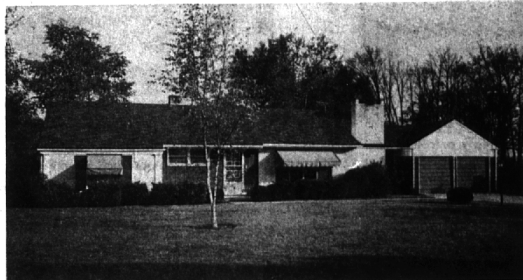
OAKLAND HILLS COUNTRY CLUB

All homes in area
on 2 Lots
3 bedrooms, 2 baths
& Lavatory
2 fireplaces

WALNUT panelled Den
35x13 Recreation Room
Separate Dining Room
Screened Porch
Carpeting, Draperies
Sewer

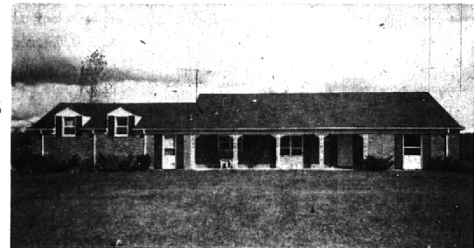
WING LAKE PRIVILEGES

3 bedrooms, 2 baths
Fireplace in
17x11 Family Room
Breakfast space in
kitchen
Built-ins (dishwasher,
disposal)
Screened porch
with awning



LONG LAKE SHORES

"On-The-Water"
and
BLOOMFIELD HILLS
SCHOOLS



Roadside Elevation

If you don't need to compromise, why not give your family the ultimate in "Year-round Lake Living". This luxurious three bath home is on half an acre of sloping lakefront. All the plus features you want are here, including sprinkler system and burglar-fire alarm. Only a personal inspection could tell the full story. Phone now for appointment.

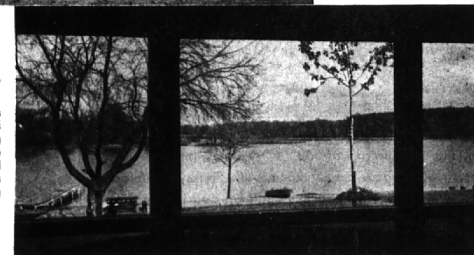


Lakeside Elevation

"THE VIEW FROM THE BRIDGE"

Your family and friends will delight in the splendor of this ever-changing view. The beach is of the most comfortable sand available, and there's even a custom dwelling for your "Rover."

\$64,900



HOUSEMAN-SPITZLEY CORPORATION

Fine Properties Since 1914

Midwest 4-7422

Jordan 4-6126

MAyfair 4-6126



FRED PIERCE INC.

460 NORTH WOODWARD, BIRMINGHAM, MICH.
Midwest 7-1414