

Country Day Overwhelms Visitors from Indiana, 13-0

Marks Furnishes Scoring Sparks

By DAVE PHILPO
Sports Editor

Please excuse the pun. Country Day last Saturday left its "Marks" on the visiting Park School from Indianapolis.

John Marks, that is. The fleet halfback for the Day eleven punched over for two touchdowns in leading his team to a 13-0 victory over the visiting Hoosiers.

THE WIN marked possibly the first time this year that Coach Dick Anderson has been able to get his offense and defense working together. It was the third win for his charges.

Indicative of Country Day's defensive prowess was the fact that Park never once penetrated further than the winners' 30-yard line. Much of the credit for this accomplishment went to Paul Engel and Paul Fonda, the two key defensive ends, in the Country Day forward wall.

IT DIDN'T TAKE long for the offensive contingent to get started. Following an exchange of punts in the first period, Country Day moved 60 yards for the first touchdown.

Key play in the drive was a 32-yard pass play from quarterback Steve Serlin to Engel.

MARKS SMASHED off tackle for five yards and the score and fullback Arnold Beckerman added the point on a two-yard plunge.

Country Day tallied again with only 15 seconds to play in the first period.

LADIES VOLLEYBALL Requests have been received at the Southfield Parks and Recreation Department office for a volleyball league for girls 15 years of age and up. If you are interested, please telephone the Parks and Recreation Department office.

BOYS TEEN GYM The Birney School gymnasium is open each Monday evening from 6:30 p.m. to 8:00 p.m. and the Lederle School gymnasium is open on Wednesday evenings for teen boys, for informal basketball play and volleyball.

More Sports News on page 8-E

Page 2-E THE BHAM ECENTRIC November 1, 1962



U of D FOOTBALL

Presented by THE GREATER DETROIT PLYMOUTH-VALIANT DEALERS WABX | fm 99.5

half, with Marks choosing an off tackle play again, this time for four yards. Beckerman again ran for the extra, but it was nullified by an off-sides penalty.

AGAIN IT WAS Serlin's arm that set up the touchdown as he tucked to Engel on a play that topped off 45 yards and put Country Day on the Hoosiers' 25-yard line.

It was a defensive second half with neither team being able to mount a serious scoring threat.

Serlin completed six passes of 12 attempted.

BLOYED BY the victory, Country Day will take an arch-rival Grease Pointe University School at 2:30 p.m. Friday on the home field.

Here's what Anderson had to say about G.P.U.S.

"They've got the tallest team I've ever seen. I don't believe they have a man under six feet."

ANDERSON'S CHIEF concern will be stopping the passing of Bob Perrin, 6-3, 220-pound quarterback, and the running of fullback Kurt Stotkin, a six-foot, 215-pounder.

"This shapes up to be our toughest game of the year," Anderson declared. "Last year, they beat us 56-7."

Country Day figures to be in good shape physically for the tussle with Grease Pointe. Guard Chuck O'Neil, injured two weeks ago, will be back in the lineup and John Sneed, reserve quarterback, will be offered an ankle injury last week, should be able to play, Anderson said.

THE BADGERS to the win over, the Hoosiers. He scored on runs of 30, 35 and 40 yards and passed to Rick Back for another on a play that covered 40 yards.

Jeff Watts also received a toss from Bowman and ran 50 yards for the other touchdown.

STEVE EYLER scored all 13 points for the Boilermakers. He tallied on a four-yard jump off right guard and raced 50 yards around right end. He added the point on a two-yard plunge.

Dave Girard led his Gopher teammates to victory as he scored on runs of 10 and 40 yards for two touchdowns. Mike Ling intercepted a pass and sprinted 57 yards for the other.

BOB BOZELL ran six and 32 yards for the Hawkeyes touchdowns and also scored the extra point. It was the Gophers' fourth win against one tie and left them leading the junior varsity conference.

The Buckeyes score came on a 60-yard off-tackle run by Larry Obey. Bruce Olin made the extra point.

THE INDIANS threatened in the final minute of the game with a 25-yard run by Rollin Gish and a 15-yard pass from John Bratton to Dudley Lehman but the block eyes held on their own 30-yard line long enough to run out the clock and preserve the win.

THE LAKERS amassed 312 yards, of which 276 were on the ground and 36 came through the air.

It was almost a penalty-free contest, with only 20 yards being assessed against Clarkston.

The Lakers will travel to Bloomfield Hills Friday where they will engage the Barons in a game scheduled to begin at 3:30 p.m.

Both teams are unbeaten and untied and both boast 6-0 records.

Milt Plum completed better than 60 per cent of his passes during the 1960 season while playing with Cleveland, good for 21 touchdowns.

COACH KINNESON is not one to rest on his laurels. He's getting his gridders ready for the game with Shrine at 8 p.m. Saturday.

"They're tough," said Kinneson of Shrine, who has lost only to St. Ambrose, winner of 28 games in a row.

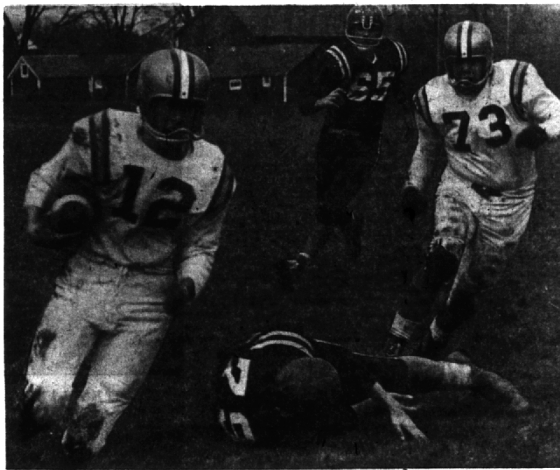
The coach said he hopes his team continues to "jell" on offense as they did in the Houston game.

4220 N. WOODWARD NORTH OF 13 MILE RD. IN ROYAL OAK MI 9-6410

NATION-WIDE MIDAS MUFFLERS ARE GUARANTEED FOR AS LONG AS YOU OWN YOUR CAR

FOREIGN CARS SHOCKS AND SEAT BELTS, TOO! Free Estimate

Village Sport & Hobby Shop 154 South Woodward, Birmingham MI 4-3010



QUARTERBACK STEVE SERLIN (12) elects to keep the ball on an option play and rolls around right end for a nice gain for Country Day in the game against Park School from Indianapolis Saturday. Teammate Steve Munson (73) leads the interference on this particular play. On the turf is Dennis Connolly (79) and George Kothe (65) of Park tries to catch up with the play. Behind the passing of Serlin and the running of halfback John Marks (the scored both touchdowns) Country Day downed the visiting Hoosiers by a score of 13-0.

THE cost of financing a project as large as the Little League is considerable, with the equipment, insurance and referees to pay, says director Chick Holmes.

CAKE DECORATING Because of lack of attendance, the cake decorating classes have been cancelled. This program will again be offered in the January series of programs.

TEEN SOCIAL DANCE Due to insufficient attendance, the teen social dance classes have been cancelled. The Department of Parks and Recreation will again offer this class in the January series of programs.

CLASH (Continued from 1-E)

contributed 100 yards rushing of a team total of 160.

THE INDIANS threatened in the final minute of the game with a 25-yard run by Rollin Gish and a 15-yard pass from John Bratton to Dudley Lehman but the block eyes held on their own 30-yard line long enough to run out the clock and preserve the win.

THE LAKERS amassed 312 yards, of which 276 were on the ground and 36 came through the air.

MILT PLUM completed better than 60 per cent of his passes during the 1960 season while playing with Cleveland, good for 21 touchdowns.

COACH KINNESON is not one to rest on his laurels. He's getting his gridders ready for the game with Shrine at 8 p.m. Saturday.

FOREIGN CARS SHOCKS AND SEAT BELTS, TOO! Free Estimate

Village Sport & Hobby Shop 154 South Woodward, Birmingham MI 4-3010

THE cost of financing a project as large as the Little League is considerable, with the equipment, insurance and referees to pay, says director Chick Holmes.

CAKE DECORATING Because of lack of attendance, the cake decorating classes have been cancelled. This program will again be offered in the January series of programs.

TEEN SOCIAL DANCE Due to insufficient attendance, the teen social dance classes have been cancelled. The Department of Parks and Recreation will again offer this class in the January series of programs.

CLASH (Continued from 1-E)

contributed 100 yards rushing of a team total of 160.

THE INDIANS threatened in the final minute of the game with a 25-yard run by Rollin Gish and a 15-yard pass from John Bratton to Dudley Lehman but the block eyes held on their own 30-yard line long enough to run out the clock and preserve the win.

THE LAKERS amassed 312 yards, of which 276 were on the ground and 36 came through the air.

MILT PLUM completed better than 60 per cent of his passes during the 1960 season while playing with Cleveland, good for 21 touchdowns.

COACH KINNESON is not one to rest on his laurels. He's getting his gridders ready for the game with Shrine at 8 p.m. Saturday.

FOREIGN CARS SHOCKS AND SEAT BELTS, TOO! Free Estimate

FOREIGN CARS SHOCKS AND SEAT BELTS, TOO! Free Estimate

Village Sport & Hobby Shop 154 South Woodward, Birmingham MI 4-3010

Southfield Recreation Roundup

The Southfield Department of Parks and Recreation has outlined its program of fall and winter activities.

The schedule is:

FAMILY SWIMMING
The Thursday evening swimming session has been cancelled due to lack of attendance. The cancellation will be effective beginning Nov. 8.

BOYS TEEN GYM
Basketball, volleyball and relays for teen boys will be held at Birney School gym each Monday, 6:30 p.m. to 8 p.m. and at Lederle each Wednesday evening. The fee for this activity is based on a 12 week series. A second series will begin on Feb. 4 and 7.

MENS GYM
Basketball, volleyball, badminton and conditioning exercises are being held at Birney School gym on Monday evenings from 8 p.m. to 10 p.m. and the Lederle gym on Wednesday evenings. A second series will begin on Feb. 4 and 7.

MENS BASKETBALL
A league for men over 18 years of age will be organized by December 1st. Applications may be obtained by telephoning the Department office.

OPTIMIST BOYS BASKETBALL
Basketball for boys in the 5th through 8th grades will begin Saturday, Dec. 8, with league play starting Jan. 6. Applications will be distributed through the schools around Nov. 18.

ROLLER SKATING
Instructors, skating to music, and skate mixers will be offered in the multi-purpose room at Southfield No. 10 School on a weekly basis. For further information, please call the Department of Parks and Recreation.

CAKE DECORATING
Because of lack of attendance, the cake decorating classes have been cancelled. This program will again be offered in the January series of programs.

TEEN SOCIAL DANCE
Due to insufficient attendance, the teen social dance classes have been cancelled. The Department of Parks and Recreation will again offer this class in the January series of programs.

CLASH
(Continued from 1-E)

contributed 100 yards rushing of a team total of 160.

THE INDIANS threatened in the final minute of the game with a 25-yard run by Rollin Gish and a 15-yard pass from John Bratton to Dudley Lehman but the block eyes held on their own 30-yard line long enough to run out the clock and preserve the win.

THE LAKERS amassed 312 yards, of which 276 were on the ground and 36 came through the air.

MILT PLUM completed better than 60 per cent of his passes during the 1960 season while playing with Cleveland, good for 21 touchdowns.

COACH KINNESON is not one to rest on his laurels. He's getting his gridders ready for the game with Shrine at 8 p.m. Saturday.

FOREIGN CARS SHOCKS AND SEAT BELTS, TOO! Free Estimate

Village Sport & Hobby Shop 154 South Woodward, Birmingham MI 4-3010

Recreation Round-Up

ADULT GYM AND SLIM TRIM These classes will not be held on Monday evening, Nov. 12 because of a school activity in the gyms.

FAMILY SWIMMING
Family swimming on Mondays at Seaholm Pool at 7:30 p.m. will continue through the winter. This is a popular activity and we invite you to bring the children with you for a pleasant evening in the water. All children under 18 must be accompanied into the water by the parents.

BARNUM POOL
All children at Barnum registered in Saturday classes should be sure to pick up the refund on the two cancelled classes at the Recreation Office in the Municipal Building before the end of the series. No refunds will be given after Dec. 15.

ICE RINK ACTIVITIES
Winter skating schedules and applications for skate classes and hockey leagues will be distributed before the school next week. Call now for reservations for renting the ice rink for party and hockey teams. Call MI 4-1887 or MI 7-0993 from 2-4 p.m., Monday through Friday, after Nov. 5. Activities will begin as soon as weather permits the rink to open. Activities will include beginning skate classes, hockey clinic and midget and juvenile leagues, figure skating classes, family night with a full instruction available, mother and pre-schooler sessions on Wednesday afternoons and many open sessions.

SENIOR MEN'S CLUB
On Monday, Oct. 22 this group of men made their monthly visit to patients at the Oakland County Medical Care Facility on N. Telegraph in Pontiac. These men are always made welcome. Birmingham's band player, Coye Fisher was one of those who joined the

group on this occasion. The program for the Senior Men's Club weekly meeting in the Ranch Room of the Community House on Friday will be a talk on "Brotherhood" by Fr. Edward Farrell of the Sacred Heart Seminary of Detroit.

AUTHORIZED DEALER BROWNING Guns

AUTOMATIC-5 shotgun
The Aristocrat of Automatic Shotguns 12, 16, 20 gauge & 3" Magnum 12 from \$134.50

SUPERPOSED shotgun
For You Who Appreciate Fine Guns 12 Gauge with Weight and Feed of a 20 Brevette and Twentyweight models from \$135.00

DOUBLE AUTOMATIC shotgun
12 Gauge with Weight and Feed of a 20 Brevette and Twentyweight models from \$149.00

HIGH-POWER rifle
Shoots Where You Aim - Ejector Fed 9 caliber from .215 to .458W Mag. from \$75.00

22 AUTOMATIC rifle
22 Short or 22 Long Rifle models The Rifle You'll Never Outgrow - Wear-out from \$69.50

THE SPORTSMAN MI 5-1225 184 Pierce Street

Model's HOBBY SUPPLIES

OVER 50,000 ITEMS

22524 WOODWARD AVENUE FERDALE 20, MICHIGAN phone LI 3-2422

INSULATION

POPULAR 8-FT. BLANKET PAPER ENCLOSED

1 1/2" Thick, 120 Sq. Ft. 3.95
2" Semi-Thick, 90 Sq. Ft. 3.88
3" Full Thick, 60 Sq. Ft. 3.40

ALUMINUM FOIL ONE SIDE
2" Semi-Thick, 90 Sq. Ft. 5.15
3" Full Thick, 60 Sq. Ft. 4.23

PRE-FINISHED DRIFTWOOD LAUAN
1 x 7
V-Grooved
V-Edge \$4.85 Sheet

LAKE SHORE PANELING BIRCH
2 Finishes antique & natural
1/4" x 8"
V-Grooved \$7.95 Sheet

PRE-FINISHED BLONDE LAUAN
1/4" x 8"
V-Grooved
V-Edge \$6.65 Sheet

BASEMENT STORM SASH
33 x 15 Size Aluminum \$2.49 Ea.

SHUTTER MAGIC FOR MODERN HOMES

UP TO 36" LENGTHS IN STOCK

SPECIAL LOUVRE DOORS		REGULAR LOUVRE DOORS	
3 Sizes Only 1 1/2" THICK		FULL RANGE OF SIZES 1 1/2" THICK	
1'0"x6"	4.95	1'3"x6'8"	6.25
1'3"x6"	5.45	1'6"x6'8"	6.95
1'6"x6"	5.75	2'0"x6'8"	8.95
		2'4"x6'8"	9.45
		2'6"x6'8"	9.95
		OTHER SIZES AVAILABLE	

SAVE NOW — WITH THESE CASH & CARRY SPECIALS

ENB RESTRICK
Lumber Company

803 SO. MAIN, ROYAL OAK, MI 4-3000

425 ETON RD., BIRMINGHAM, MI 4-3300