

- ACROSS**
- 1 City of Italy
 - 2 Head
 - 3 Corvettes
 - 10 Fuel
 - 14 Palestine in Jewish use
 - 15 Isles off Brazil
 - 16 A handle
 - 17 1000
 - 18 Vegetable
 - 20 Russian
 - 21 Robots
 - 22 Animal
 - 23 Endorse
 - 24 Greek letter
 - 26 Plural ending
 - 27 To slide
 - 29 Letter of alphabet
 - 30 American Indian
 - 31 Stringed instrument
 - 34 Heelover
 - 36 Road
 - 37 Domesticated
 - 38 Wooden pin for fastening
 - 42 Part of church
 - 43 Part of church
 - 44 Part of church
 - 45 Part of church
 - 46 Part of church
 - 47 A handle
 - 48 Fish
 - 49 Oil of roses
 - 51 Narrow

Answers to This Week's Puzzle Will Be Found On Page 7-D

- DOWN**
- 1 Wheel tooth
 - 2 Billow
 - 3 Bird's home
 - 4 Part of
 - 5 Snake
 - 6 Part of church
 - 7 Part of church
 - 8 Part of church
 - 9 One who
 - 10 One who
 - 11 One who
 - 12 One who
 - 13 One who
 - 14 One who
 - 15 One who
 - 16 One who
 - 17 One who
 - 18 One who
 - 19 One who
 - 20 One who
 - 21 One who
 - 22 One who
 - 23 One who
 - 24 One who
 - 25 One who
 - 26 One who
 - 27 One who
 - 28 One who
 - 29 One who
 - 30 One who
 - 31 One who
 - 32 One who
 - 33 One who
 - 34 One who
 - 35 One who
 - 36 One who
 - 37 One who
 - 38 One who
 - 39 One who
 - 40 One who
 - 41 One who
 - 42 One who
 - 43 One who
 - 44 One who
 - 45 One who
 - 46 One who
 - 47 One who
 - 48 One who
 - 49 One who
 - 50 One who
 - 51 One who
 - 52 One who
 - 53 One who
 - 54 One who
 - 55 One who
 - 56 One who
 - 57 One who
 - 58 One who
 - 59 One who
 - 60 One who
 - 61 One who
 - 62 One who
 - 63 One who
 - 64 One who
 - 65 One who
 - 66 One who
 - 67 One who
 - 68 One who
 - 69 One who
 - 70 One who
 - 71 One who
 - 72 One who
 - 73 One who
 - 74 One who
 - 75 One who
 - 76 One who
 - 77 One who

PUZZLE NO. 730

Institute Director Talks at Wayne

Willis F. Woods, now in his first year as director of the Detroit Institute of Arts, will be the speaker at a meeting for members and the public to be held at 8 p.m. on Friday in Room J of the McGregor Building, Wayne State University.

Cultural Events

(Continued from 1-D)

for the show, which will continue through Nov. 25, are 2 to 5 p.m. daily except Mondays.

ORATORIO—"The Creation," an oratorio by Franz Joseph Haydn will be presented by the 85-voice choral choir of the First Presbyterian Church at the church at 8 p.m. The choir will be assisted by soloists, orchestra and organ. L. Robert Slusser, minister of music at the church, will direct the presentation.

WILL-O-WAY—"Study in Color," an original play by the Rev. Malcolm Boyd at the Will-O-Way Theater on Long Lake Road (near Telegraph), Bloomfield Hills, beginning at 8:30 p.m.

NOV. 5
ORFEOON OF COIMBRA—Lion Club sponsored at Groves High School begins at 8:30 p.m.

NOV. 8
MADRIGAL SINGERS—A Birmingham Musicale regular concert featuring the group's Madrigal Singers at the Community House at 1:30 p.m. The program includes a group of English Madrigals, a group of folk songs and a number of contemporary compositions.

DRAMATICUS—"The Heiress," adapted by Ruth and Augustus Goez from the book by Henry James will be presented by Groves' Dramaticus Club in the Groves High School Little Theater at 8 p.m.

NOV. 9
BIRMINGHAM ART CENTER—Detroit "Free Press" art critic Morley Driver will speak on "A Critic's View of Art Criticism" at the Art Center at 8:30 p.m.

DRAMATICUS—"The Heiress," will be presented by Groves' Dramaticus Club in the Groves High School Little Theater at 8 p.m.

WILL-O-WAY—"Study in Color," an original play by the Rev. Malcolm Boyd at the Will-O-Way Theater, Long Lake Road (near Telegraph), Bloomfield Hills, beginning at 8:30 p.m.

NOV. 10
LITTLE GALLERY—Last day of jewelry show by three "artists-craftsmen," Sammy Wallin, J. Arnold Frew and Ronald Hayes at the Little Gallery, 915 E. Maple, Birmingham. Hours are from 2 a.m. to 8 p.m.

WILL-O-WAY—"Study in Color," an original play by the Rev. Malcolm Boyd at the Will-O-Way Theater, Long Lake Road (near Telegraph), Bloomfield Hills, beginning at 8:30 p.m.

NOV. 11
WILL-O-WAY—"Study in Color," an original play by the Rev. Malcolm Boyd at the Will-O-Way Theater, Long Lake Road (near Telegraph), Bloomfield Hills, beginning at 8:30 p.m.

NOV. 13
CRANBROOK MUSIC GUILD—Two winners of the Grinnell Scholarship Awards—Bruce Francis, winner of the operatic award, and James Tocco, winner of the piano award—at Cranbrook House, Bloomfield Hills, beginning at 8:30 p.m.

MEET THE AUTHOR—"Meet the Author" day for Marcelline Hemingway Sanford, who wrote "At the Hemingways," at the Village Bookshelf, 790 N. Woodward, from 2 to 5 p.m.

NOV. 14
LWV WORKSHOP—Second of two-session workshop on important aspects of foreign policy at MSUO. Lecture-leader will be Dr. Sheldon Appleton. He will speak on "The U. N.—Facts and Fallacies." The session will begin with a luncheon at noon.

NOV. 15
TOWN HALL—Walter Steink will talk on "Show Business is No Business" at the Birmingham Theater at 11 a.m.

S'field Rec Plans Filmed Travelogues

The Southfield Department of Parks and Recreation will present a "Travel and Adventure Series," which will include six all-color motion pictures, narrated in person by the explorer-traveler who filmed them.

All the lecturers are professionals. A special fee for persons over 60 and for students has been arranged. Season ticket reservations may be obtained by telephoning the department.

The series will begin on Wednesday with Marion Dix presenting "Netherlands Antilles." The other dates for the series are Nov. 28, "Jeweled Cities of North Africa," Dec. 19, "Soul of Mexico," Jan. 6, "Hawaii—Our 50th State," Feb. 3, "Around the World by Seasonal Jeep," and Feb. 27, "Sweden—Year Around."

Multiple exposure . . . now you can run a Classified Ad 3 times for only \$2.70 (non-business, up to 15 words, cash rate). Dial Midwest 1100 now for fast results.

Area Residents Praised in Nat'l Education Journal

Volunteers of the Birmingham Public Schools District who helped pass the November, 1961, millage issues are commended in a story carried in School Management magazine.

The story in the October issue was written by William Lymann, AIA and chairman of the Information Committee of the Independent Citizens for Birmingham Schools, and Walter J. Piel, administrative assistant, Birmingham Public Schools.

The article points out the importance of informing each voter personally, of the issues involved. District leaders, together with representatives of the PTA and Independent Citizens group, planned to use laymen to tell the school story. The article summarizes how the organized block workers disseminate information on the budget proposals to every household in their neighborhood, answered questions, encouraged new residents to register, and in some instances, provided transportation to the polls on election day.

82 YEARS EXPERIENCE
RESIDENTIAL AND COMMERCIAL ROOFERS
Cutters & Downspouts
J. J. Jandler ROOFING COMPANY
551 E. VERNOR HWY., DET. WO. 2-0512

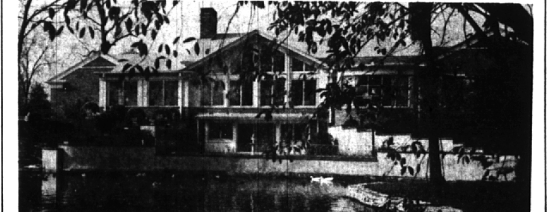
Cranbrook Offers Science Classes For Children

Enrollments are now being taken for another series of programs for young scientists in the fourth grade and up which begin Saturday at Cranbrook Institute of Science.

Saturday morning sessions are for 10:30 a.m. on Nov. 3, 10, 17 and 24. Sessions are free to junior members of the Institute. There is a charge for non-members. Here is the schedule: Saturday, Exploring the Reptiles; Nov. 10,

Exploring for Rocks and Minerals; Nov. 24, Exploring the Nov. 17, Exploring Signs of Win-Weather.

FLOOR COVERING SHOW
The finest and newest materials and designs will be shown Thurs., Fri., and Sat. Only.
"You are cordially invited!"
AL'S TILE SHOPPE
2149 Woodward Ave., West side
Mon. Thurs., Fri. 9-6;
Tues., Wed., 9-6; Saturday 9-7
LI 5-9206



BLOOMFIELD HILLS—Superb Bi-level Ranch nestled on a distinctive site with a private pond and relaxing "natural view." Carefully detailed thruout, there are 4 twin bedrooms (space for 5th available), beamed ceiling family room, Florida room, billiard, card and recreation rooms. Delightful kitchen with all built-ins, 3 car attached garage, and 20 x 60 foot swimming pool. MAY WE ARRANGE AN APPOINTMENT? \$139,500.

Showcase of homes
HALL & YOUNG INC. REALTORS
BIRMINGHAM 315 S. Woodward MI 6-7900
BLOOMFIELD 4114 W. Maple MA 6-5900

NATURE WILL DO YOUR DECORATING



View of the Ravine and the Rouge from your Living Room

Equipped to fill every family need . . .
3 Bedrooms, 2 baths . . .
Separate Dining Room . . .
Fireplace in Living Room . . .
Paneled Family Kitchen . . .
Dishwasher, Disposal, oven and range . . .
Basement with Recreation Area . . .
Birmingham Schools . . .

FRED PIERCE INC.
460 NORTH WOODWARD, BIRMINGHAM, MICH.
Midwest 7-1414

TAKE ADVANTAGE OF OUR EXTRA BONUS DAYS . . .
SAVE BY NOVEMBER 10th—EARN FROM THE 1st.

Established in 1890—Never missed paying a dividend. Over 72 years of sound management—Your assurance of security. Assets now over seventy-five million dollars.

PAID QUARTERLY 4 1/4%
CURRENT RATE (PER ANNUM)

CAPITOL SAVINGS & LOAN ASSOCIATION
27215 Southfield Rd. at 11 Mile Rd.
Downtown Detroit Office 234 State St. WO 2-1078
KE 7-6125

Member Federal Home Loan Bank System

COUNTRY ESTATE



Rochester, Michigan

- 10 ACRES** High rolling site, beautifully landscaped with a gorgeous view in all directions.
- SWIMMING POOL** 25 x 50 with Cabana and dressing rooms and Lav. Skating in the winter.
- KEEP HORSES** Large barns with 11 box stalls. Tack room.
- SOUTHERN COLONIAL** Gracious large rooms—Exceptional living room. 5 Family Bedrooms and 2 Baths on 2nd floor. Maids room and bath on 1st floor. Big Games room in basement. 3 Fireplaces. Lovely, soft gold wool carpeting.
- Separate Caretaker's house, Living room, Dining room-Kitchen, 2 Bedrooms and Bath.
- NEAR ALL FACILITIES** Michigan State Oakland five miles distant. General Motors Tech Center 12 miles south. One mile to large modern Shopping Center, Churches, and excellent Schools — bus service to Schools.
- SOUND VALUE** To reproduce this property new today would cost \$145,000. It was priced at \$78,000. **OWNER WILL NOW SELL FOR \$68,000.**

THIS IS IDEAL COUNTRY LIVING FOR YOU AND YOUR FAMILY!
CALL US FOR AN APPOINTMENT

SNYDER KINNEY & BENNETT INC. Realtors

239 S. Woodward, Birmingham MI 4-7000
32740 Franklin, Franklin MA 6-9600