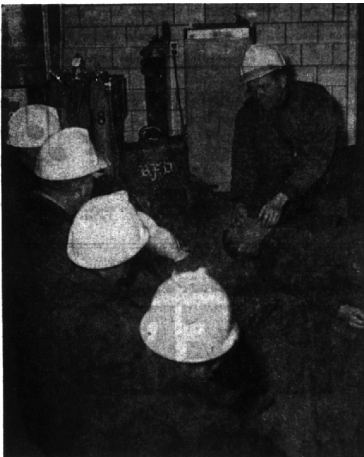


# CD Rescue Squad Exhibits Skills



A. R. Blevin, of the Birmingham Civil Defense Rescue Squad is the "victim" as members of the group demonstrate life-saving techniques at the Chesterfield Fire Station Saturday afternoon. Fire Capt. C. J. Nunnelley is instructing the men in the handling of medical emergencies.



Squad members Marvin Christensen (left), and Joseph Sedano lower Pam Bingham from the roof in a demonstration of the use of ladders. This handy bit of equipment may be utilized as a bridge, derrick or stretcher or other disaster tool. Pam is the daughter of squad member L. I. Bingham.



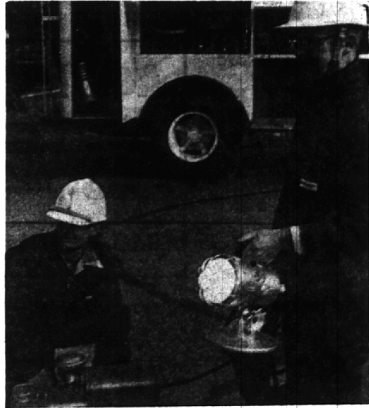
Squad equipment includes a cutting torch for removing steel girders or other metal during rescue operations. The hands belong to instructor W. S. Wallace (left), and student A. R. Blevin who participated in the hour-long demonstration.



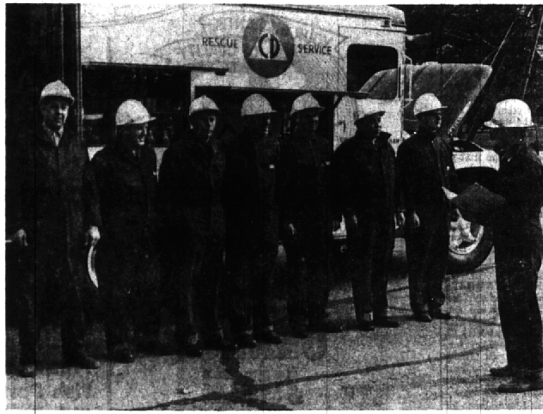
Portable measuring instruments for measuring radiation intensities are carried on the heavy duty rescue truck. L. I. Bingham (right) and R. T. Artz demonstrate the use of dosimeters. The CD vehicle is fully equipped for many phases of rescue work and is quartered at the Chesterfield Station.



Drivers and squads are in constant communication with CD headquarters and other city departments through intercom radio, installed in the truck. In addition to the engine generator, the truck is equipped with its own portable, gasoline-operated, electric-power unit. Equipment in the vehicle includes such diverse items as jacks, heater, helmets, marking crayons, canteens and medical supplies.



Squad leader D. G. Roberts (left), and R. T. Artz check the portable generator, power unit and lights during the demonstration. For night operations and those in darkened areas, emergency lighting is essential to increase safety and expedite the work of disaster crews.



Ready to go and lined up for action are these members of the rescue squad (from left) W. S. Wallace, Marvin Christensen, W. G. Montgomery, L. I. Bingham, A. R. Blevin, Joseph Sedano and R. T. Artz. Squad leader

D. G. Roberts, in front of his men, briefs them on the techniques which they will demonstrate and take part in during the exhibition of work learned in basic rescue classes and in continuing training.



Capt. Nunnelley points out that literature and information are available to civilians interested in preparing for any emergency and for those interested in rescue training. The truck may be seen any day between the hours of 10 a. m. and 10 p. m. at the Chesterfield Fire Station. Basic rescue courses start every few weeks. Each session in the 10-week course is two hours long.

THE BHAM ECENTRIC Page  
November 1, 1963 7-CC



the younger  
the foot  
the more  
important  
the fit.....

That's why we recommend the Stride Rite Firstie. Its fine construction — and our skilled fitters — are so important to the first walking year.

- broad heel seat
- snug heel fit
- firm counter

Orthopedic Shoes for Children

**McSweeney's**

Open Friday Evenings

277 PIERCE STREET

MI 6-4488

Eccentric Want Ads Get Results  
Ask for Miss Classified—MI 4-1100



Group of  
Transitional Cottons,  
Suede cloth and Wool  
dresses in one-piece  
and two-piece styles.

Sizes 8 to 18



the SPORTSMAN



MI 6-1225  
184 Pierce  
Birmingham

SALE

your best fashion buys

GET BIG SAVINGS ON NOW-INTO-WINTER FASHIONS

GENERAL ELECTRIC

Cordless AUTOMATIC TOOTHBRUSH

10-DAY FREE HOME TRIAL

GIVES CLEANER TEETH than handbrushing — plus healthful care of the gums — automatically. Most people do not brush well enough or use enough strokes for really thorough cleaning. The General Electric Toothbrush has answered these problems with a built-in brushing action that cleans the teeth and refreshes the gums. So pleasant children will use it, so effective, everyone should.

TRY IT for 10 days...

If you are not completely satisfied, we will refund your purchase price.

Comes in a family package which includes a safe, cordless battery powered handle that automatically recharges in the holder. Four snap-in personal brushes.

Priced low, as you expect at Hawthorne's!

**Hawthorne** ELECTRICAL COMPANY  
GENERAL ELECTRIC SALES CENTER

375 Hamilton, Birmingham

Midwest 4-2200

Open Thursday & Friday Evenings until 9:00 P.M.