

CULTURAL EVENTS

12TH ANNIVERSARY EXHIBIT, Little Gallery, 915 E. Maple, Birmingham. Open 9 a.m.-6 p.m.; closed Sundays and Mondays. Artists: Media Gertrude and Otto Natzler, and Francis de Endley. Pottery and painting.

MICHIGAN ARTISTS SHOW, Detroit Institute of Arts, 19 area artists displaying works. Largely abstract, includes oils, watercolors, pastels, drawings, etchings, sculpture and photographs.

STUDENT ART EXHIBITION, Cranbrook Academy of Arts galleries. Opening 9-11 p.m. Friday. Open daily all summer 2-5 p.m., except Mondays.

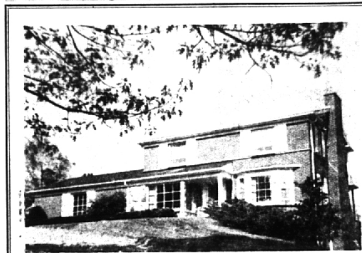
ART TEACHER'S SHOW, Birmingham Room, 2nd floor Denney's store, Birmingham. Sponsored by Oakland County Educational Association. Eight Birmingham art teachers included; exhibit open during regular store hours.

"MICHIGAN WEEK" ART ACTIVITIES
May 24-May 27
STUDENT SCIENCE EXHIBIT, Birmingham Community House. All art works of student and adult classes. Open Thursday 10 a.m.-8 p.m.; Friday 10-5 p.m.

OUTDOOR ART EXHIBIT, Derby Junior High School, works of all students in city on display. Saturday and Sunday, 10-4 p.m.; Friday and Saturday, 7-30 p.m.; 9-30 p.m., students demonstrating their individual art techniques.

WINDOW DISPLAYS, featured by area merchants in honor of Birmingham and Michigan Heritage.

VARIETY SHOW, at intermission teenage dance at Birmingham Community House.



FRANKLIN VILLAGE

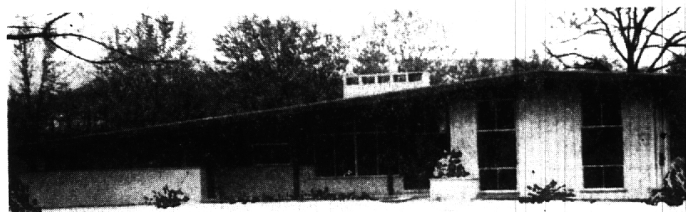
4 bedroom brick Colonial on hilly, 1 1/2 acres with brook. Ideal kitchen with eating space. Separate dining room. 2 fireplaces. 7 years old. Wood paneled living room and den. Finished basement with ground level exposure. Carpeting and drapes included.

\$39,900

31305 Woodside Dr.

MA 6-6859

WHERE THE TRADE WINDS BLOW



BLOOMFIELD HILLS: Lasher Rd. adjoining Bloomfield Hills Country Club. New, Modern and Exciting contemporary Tri-level. Four bedrooms plus paneled den or study, family room, three and one-half baths and hot water heat. Loaded with extras and custom features throughout. Beautiful view overlooking golf course from living room and master bedroom. Large 250 x 242 ft. site. Priced at \$75,000.

BATEMAN REALTY CO.

FE 4-0528

377 S. Telegraph, Pontiac

FE 8-7161

1962-63 St. James Concerts Announced
After a most successful first season, St. James Concert Series, St. James Episcopal Church, announces the artists to appear at its 1962-63 concert series. Robert Baker and David Craighead, organists, the Columbus Boychoir and Virgil Fox, returning by popular request, will perform next season. Robert Baker, one of the nation's greatest organists, opens the series on Tues. Oct. 30, 1962. As Director of the School of Sacred Music at New York's Union Theological Seminary, he has one of the country's most influential and responsible posts in the field of church music.

THE SECOND concert will be Tues. Jan. 22, 1963, performed by David Craighead, head of the organ department, Eastman School of Music and organist, St. Paul's Episcopal Church, Rochester, New York. He has been heard with singular success in cities all over the continent and reviewers have spilled superlatives over his programming and playing. He is one of the relatively few organists who attract musicians and laymen alike.

The Columbus Boychoir "America's Singing Boys" under the direction of Donald T. Bryant appears on Fri. Mar. 1, 1963. Internationally famed as one of the finest boy choirs in the world, they have appeared with the N.Y. Philharmonic, the Philadelphia Orchestra and the NBC Symphony under Toscanini.

THE CONCERT will include an opera by Hayden "The Apotheosis of Music."

Ethan Allen

EARLY AMERICAN FURNITURE AND ACCESSORIES

More gracious living with the best of yesterday for Today.

• Park Free in our lot across the street

• Open Thursday, Friday, Saturday Till 9

• Come visit us

• our unusual

• collection of

• Colonial Living and Dining

• Bedroom and Kitchen

• Room pieces.

• Phone 5-1330

• 315 S. WASHINGTON AVE.

• ROYAL OAK, MICH.

• PARKING LOT

• Royal Oak Furniture Co.

• 315 S. WASHINGTON AVE.

• ROYAL OAK, MICH.

• PARKING LOT

• Royal Oak Furniture Co.

• 315 S. WASHINGTON AVE.

• ROYAL OAK, MICH.

• PARKING LOT

• Royal Oak Furniture Co.

• 315 S. WASHINGTON AVE.

• ROYAL OAK, MICH.

• PARKING LOT

• Royal Oak Furniture Co.

• 315 S. WASHINGTON AVE.

• ROYAL OAK, MICH.

• PARKING LOT

• Royal Oak Furniture Co.

• 315 S. WASHINGTON AVE.

• ROYAL OAK, MICH.

• PARKING LOT

• Royal Oak Furniture Co.

• 315 S. WASHINGTON AVE.

• ROYAL OAK, MICH.

• PARKING LOT

• Royal Oak Furniture Co.

• 315 S. WASHINGTON AVE.

• ROYAL OAK, MICH.

• PARKING LOT

• Royal Oak Furniture Co.

• 315 S. WASHINGTON AVE.

• ROYAL OAK, MICH.

• PARKING LOT

• Royal Oak Furniture Co.

• 315 S. WASHINGTON AVE.

• ROYAL OAK, MICH.

• PARKING LOT

• Royal Oak Furniture Co.

• 315 S. WASHINGTON AVE.

• ROYAL OAK, MICH.

• PARKING LOT

• Royal Oak Furniture Co.

• 315 S. WASHINGTON AVE.

• ROYAL OAK, MICH.

• PARKING LOT

• Royal Oak Furniture Co.

• 315 S. WASHINGTON AVE.

• ROYAL OAK, MICH.

Potpourri

(Continued from I-D)

some kind of a reading guide. Does this make him a conformist?

IS THERE ANY proof that people who buy best sellers do so only because they are popular? Is there any proof that they do not read other books as well? I am not defending the best seller from a literary point of view. There are good and bad best sellers. But I do believe that people who follow best sellers may be genuinely interested in current and popular literature—and that this is a perfectly respectable motivation.

If the reader is going to continue to be judged for reading best sellers, the judgement should be based on the quality of the book—not prejudged because of its popularity.

TWENTY-FOURTH MICHIGAN, one of the regiments in the famous Iron Brigade of the Civil War, is the subject of a first book by a local reader, Donald L. Smith.

A retired major in the Army reserve and a retired Detroit police officer, Smith has been a civil war buff for some 25 years.

He decided to write this book three years ago, when he discovered that the famous Michigan regiment was composed of so many officers from Wayne County, Detroit and Birmingham.

It names such as Lahser, Beaubien, Rivard and Neff included in the regiment, it should give some fascinating local history.

A review can be found on this page.

THE FISHER theatre has arrived! A confirmed devotee of "On Stage"—in my opinion, the best darned comic strip in the Free Press—I was delighted to see the play in which Mary Perkins stars, is having its pre-Broadway opening at the Fisher. How about that?

One of the immediate aftermaths of Sputnik I was a reappraisal of American education. Educators and laymen were particularly concerned with the lack of adequate stimulus for gifted students.

Dr. Hertz Fishman was one person who did something about it.

With the help of friends, neighbors and organizations in Greenwich, Connecticut, Dr. Hertz established a non-profit summer camp for gifted children in the Berkshires. It is called Science and Arts camps Inc.

Today there are nine SAAC camps in the east.

Just recently the Carnegie Corporation awarded SAAC a three year grant to open branches in the midwest.

One of the new branches opens in Oak Park June 18. Eight communities including Birmingham are participating in the program.

200 children from grades 3-7 will be accepted on the basis of a principal's recommendation.

There are no examinations and no homework.

Emphasis is placed on exciting interest in each field. And the program continues on through the next school year in a series of 10 sessions.

Write to SAAC Coordinator, Superintendent of Schools, Oak Park for further information.

LEGAL NOTICE

Donald K. Tyler, Attorney at Law, 1906 Dime Building, Detroit 26, Michigan

STATE OF MICHIGAN — The Probate Court for the County of Oakland

At a session of said Court, held at the Probate Office in the City of Pontiac, on the 19th day of May, A.D. 1962.

Present, Hon. Arthur E. Moore, Judge of Probate.

It is the Matter of the Estate of AVON

Dolphine M. Newcomb having filed a petition praying that an instrument filed in said Court be admitted to Probate as the last will and testament of said deceased, and that administration with Will annexed of said estate be granted to Donald K. Tyler, or to some other suitable person, and for determination of the legal heirs of said deceased.

It is Ordered, That the 12th day of June A.D. 1962, at ten o'clock, in the forenoon, at said Probate Office, in hereby appointed for hearing and decision.

It is Further Ordered, That publication of a copy hereof, once each week for three successive weeks, previous to said day of hearing, in the Birmingham Eclectic, a newspaper, printed and circulated in said County, and that applicant personally or by registered mail, return receipt requested, to each of the known heirs at law, legatees and devisees at their last known place of address at least ten days prior to said day of hearing.

ARTHUR E. MOORE, Judge of Probate.

11, 12, 133

Michigan's Upper Peninsula is a far vaster area than most people realize. Its 16,538 square miles of land area, 30 per cent of the total state area, is equal to the combined areas of Connecticut, Delaware, Massachusetts and Rhode Island.

Area Residents Fill Michigan Artists Show

Ten Birmingham residents, seven Ann Arbor residents, 187 Town-Cranbrook Academy representatives, and two Bloomfield Hills exhibitors are included in the 52nd annual Exhibition for Michigan Artists, which opened May 18 at Detroit Institute of Arts.

Continuing through June 22, the exhibition will be hosted by the Detroit Arts Commission and the Founders Society. The Women's Committee, Founders Society, will welcome the public at a reception in the Great Hall from 8:30-11 p.m.

THE EXHIBIT is composed of 161 entries, 23 of which received awards, from a total of about 1700 submitted works.

Largely abstract, it includes oils, watercolors, pastels, drawings, etchings, linocuts, lithographs, woodblock prints, sculpture and photographs.

BIRMINGHAM residents represented in the show are: Norita Eglet, 614 Purdy; Kathleen Lewis, Hilltop Lane; Rodger Mack, 132 N. Woodward; Alissa Mackie, 2725 Juniper; Donald A. Montana, 217 Pine; Thomas O'Connor, 680 Lone Pine Drive.

Ann Arbor residents include: Howard Brown, Judy Heasel, Jon Kowalek, Roland Poska, Martin Prekop, Harvey C. Gordon and John Torrance. Bloomfield Hills exhibitors include: Shari Brush, 1371 Cedar Bend Drive, and Harvey Croze, 380 Lone Pine Drive.

Continuing through June 22, the exhibition will be hosted by the Detroit Arts Commission and the Founders Society. The Women's Committee, Founders Society, will welcome the public at a reception in the Great Hall from 8:30-11 p.m.

Largely abstract, it includes oils, watercolors, pastels, drawings, etchings, linocuts, lithographs, woodblock prints, sculpture and photographs.

BIRMINGHAM residents represented in the show are: Norita Eglet, 614 Purdy; Kathleen Lewis, Hilltop Lane; Rodger Mack, 132 N. Woodward; Alissa Mackie, 2725 Juniper; Donald A. Montana, 217 Pine; Thomas O'Connor, 680 Lone Pine Drive.

Ann Arbor residents include: Howard Brown, Judy Heasel, Jon Kowalek, Roland Poska, Martin Prekop, Harvey C. Gordon and John Torrance. Bloomfield Hills exhibitors include: Shari Brush, 1371 Cedar Bend Drive, and Harvey Croze, 380 Lone Pine Drive.

Continuing through June 22, the exhibition will be hosted by the Detroit Arts Commission and the Founders Society. The Women's Committee, Founders Society, will welcome the public at a reception in the Great Hall from 8:30-11 p.m.

Largely abstract, it includes oils, watercolors, pastels, drawings, etchings, linocuts, lithographs, woodblock prints, sculpture and photographs.

BIRMINGHAM residents represented in the show are: Norita Eglet, 614 Purdy; Kathleen Lewis, Hilltop Lane; Rodger Mack, 132 N. Woodward; Alissa Mackie, 2725 Juniper; Donald A. Montana, 217 Pine; Thomas O'Connor, 680 Lone Pine Drive.

Ann Arbor residents include: Howard Brown, Judy Heasel, Jon Kowalek, Roland Poska, Martin Prekop, Harvey C. Gordon and John Torrance. Bloomfield Hills exhibitors include: Shari Brush, 1371 Cedar Bend Drive, and Harvey Croze, 380 Lone Pine Drive.

Continuing through June 22, the exhibition will be hosted by the Detroit Arts Commission and the Founders Society. The Women's Committee, Founders Society, will welcome the public at a reception in the Great Hall from 8:30-11 p.m.

Largely abstract, it includes oils, watercolors, pastels, drawings, etchings, linocuts, lithographs, woodblock prints, sculpture and photographs.

BIRMINGHAM residents represented in the show are: Norita Eglet, 614 Purdy; Kathleen Lewis, Hilltop Lane; Rodger Mack, 132 N. Woodward; Alissa Mackie, 2725 Juniper; Donald A. Montana, 217 Pine; Thomas O'Connor, 680 Lone Pine Drive.

Ann Arbor residents include: Howard Brown, Judy Heasel, Jon Kowalek, Roland Poska, Martin Prekop, Harvey C. Gordon and John Torrance. Bloomfield Hills exhibitors include: Shari Brush, 1371 Cedar Bend Drive, and Harvey Croze, 380 Lone Pine Drive.

Continuing through June 22, the exhibition will be hosted by the Detroit Arts Commission and the Founders Society. The Women's Committee, Founders Society, will welcome the public at a reception in the Great Hall from 8:30-11 p.m.

Largely abstract, it includes oils, watercolors, pastels, drawings, etchings, linocuts, lithographs, woodblock prints, sculpture and photographs.

BIRMINGHAM residents represented in the show are: Norita Eglet, 614 Purdy; Kathleen Lewis, Hilltop Lane; Rodger Mack, 132 N. Woodward; Alissa Mackie, 2725 Juniper; Donald A. Montana, 217 Pine; Thomas O'Connor, 680 Lone Pine Drive.

Ann Arbor residents include: Howard Brown, Judy Heasel, Jon Kowalek, Roland Poska, Martin Prekop, Harvey C. Gordon and John Torrance. Bloomfield Hills exhibitors include: Shari Brush, 1371 Cedar Bend Drive, and Harvey Croze, 380 Lone Pine Drive.

Continuing through June 22, the exhibition will be hosted by the Detroit Arts Commission and the Founders Society. The Women's Committee, Founders Society, will welcome the public at a reception in the Great Hall from 8:30-11 p.m.

Largely abstract, it includes oils, watercolors, pastels, drawings, etchings, linocuts, lithographs, woodblock prints, sculpture and photographs.

BIRMINGHAM residents represented in the show are: Norita Eglet, 614 Purdy; Kathleen Lewis, Hilltop Lane; Rodger Mack, 132 N. Woodward; Alissa Mackie, 2725 Juniper; Donald A. Montana, 217 Pine; Thomas O'Connor, 680 Lone Pine Drive.

Ann Arbor residents include: Howard Brown, Judy Heasel, Jon Kowalek, Roland Poska, Martin Prekop, Harvey C. Gordon and John Torrance. Bloomfield Hills exhibitors include: Shari Brush, 1371 Cedar Bend Drive, and Harvey Croze, 380 Lone Pine Drive.

Continuing through June 22, the exhibition will be hosted by the Detroit Arts Commission and the Founders Society. The Women's Committee, Founders Society, will welcome the public at a reception in the Great Hall from 8:30-11 p.m.

Largely abstract, it includes oils, watercolors, pastels, drawings, etchings, linocuts, lithographs, woodblock prints, sculpture and photographs.

BIRMINGHAM residents represented in the show are: Norita Eglet, 614 Purdy; Kathleen Lewis, Hilltop Lane; Rodger Mack, 132 N. Woodward; Alissa Mackie, 2725 Juniper; Donald A. Montana, 217 Pine; Thomas O'Connor, 680 Lone Pine Drive.

Ann Arbor residents include: Howard Brown, Judy Heasel, Jon Kowalek, Roland Poska, Martin Prekop, Harvey C. Gordon and John Torrance. Bloomfield Hills exhibitors include: Shari Brush, 1371 Cedar Bend Drive, and Harvey Croze, 380 Lone Pine Drive.

Continuing through June 22, the exhibition will be hosted by the Detroit Arts Commission and the Founders Society. The Women's Committee, Founders Society, will welcome the public at a reception in the Great Hall from 8:30-11 p.m.

Largely abstract, it includes oils, watercolors, pastels, drawings, etchings, linocuts, lithographs, woodblock prints, sculpture and photographs.

BIRMINGHAM residents represented in the show are: Norita Eglet, 614 Purdy; Kathleen Lewis, Hilltop Lane; Rodger Mack, 132 N. Woodward; Alissa Mackie, 2725 Juniper; Donald A. Montana, 217 Pine; Thomas O'Connor, 680 Lone Pine Drive.

Ann Arbor residents include: Howard Brown, Judy Heasel, Jon Kowalek, Roland Poska, Martin Prekop, Harvey C. Gordon and John Torrance. Bloomfield Hills exhibitors include: Shari Brush, 1371 Cedar Bend Drive, and Harvey Croze, 380 Lone Pine Drive.

Continuing through June 22, the exhibition will be hosted by the Detroit Arts Commission and the Founders Society. The Women's Committee, Founders Society, will welcome the public at a reception in the Great Hall from 8:30-11 p.m.

Largely abstract, it includes oils, watercolors, pastels, drawings, etchings, linocuts, lithographs, woodblock prints, sculpture and photographs.

BIRMINGHAM residents represented in the show are: Norita Eglet, 614 Purdy; Kathleen Lewis, Hilltop Lane; Rodger Mack, 132 N. Woodward; Alissa Mackie, 2725 Juniper; Donald A. Montana, 217 Pine; Thomas O'Connor, 680 Lone Pine Drive.

Ann Arbor residents include: Howard Brown, Judy Heasel, Jon Kowalek, Roland Poska, Martin Prekop, Harvey C. Gordon and John Torrance. Bloomfield Hills exhibitors include: Shari Brush, 1371 Cedar Bend Drive, and Harvey Croze, 380 Lone Pine Drive.

Continuing through June 22, the exhibition will be hosted by the Detroit Arts Commission and the Founders Society. The Women's Committee, Founders Society, will welcome the public at a reception in the Great Hall from 8:30-11 p.m.

Largely abstract, it includes oils, watercolors, pastels, drawings, etchings, linocuts, lithographs, woodblock prints, sculpture and photographs.

BIRMINGHAM residents represented in the show are: Norita Eglet, 614 Purdy; Kathleen Lewis, Hilltop Lane; Rodger Mack, 132 N. Woodward; Alissa Mackie, 2725 Juniper; Donald A. Montana, 217 Pine; Thomas O'Connor, 680 Lone Pine Drive.

Ann Arbor residents include: Howard Brown, Judy Heasel, Jon Kowalek, Roland Poska, Martin Prekop, Harvey C. Gordon and John Torrance. Bloomfield Hills exhibitors include: Shari Brush, 1371 Cedar Bend Drive, and Harvey Croze, 380 Lone Pine Drive.

Continuing through June 22, the exhibition will be hosted by the Detroit Arts Commission and the Founders Society. The Women's Committee, Founders Society, will welcome the public at a reception in the Great Hall from 8:30-11 p.m.

Largely abstract, it includes oils, watercolors, pastels, drawings, etchings, linocuts, lithographs, woodblock prints, sculpture and photographs.

BIRMINGHAM residents represented in the show are: Norita Eglet, 614 Purdy; Kathleen Lewis, Hilltop Lane; Rodger Mack, 132 N. Woodward; Alissa Mackie, 2725 Juniper; Donald A. Montana, 217 Pine; Thomas O'Connor, 680 Lone Pine Drive.

Ann Arbor residents include: Howard Brown, Judy Heasel, Jon Kowalek, Roland Poska, Martin Prekop, Harvey C. Gordon and John Torrance. Bloomfield Hills exhibitors include: Shari Brush, 1371 Cedar Bend Drive, and Harvey Croze, 380 Lone Pine Drive.

Continuing through June 22, the exhibition will be hosted by the Detroit Arts Commission and the Founders Society. The Women's Committee, Founders Society, will welcome the public at a reception in the Great Hall from 8:30-11 p.m.

Largely abstract, it includes oils, watercolors, pastels, drawings, etchings, linocuts, lithographs, woodblock prints, sculpture and photographs.

BIRMINGHAM residents represented in the show are: Norita Eglet, 614 Purdy; Kathleen Lewis, Hilltop Lane; Rodger Mack, 132 N. Woodward; Alissa Mackie, 2725 Juniper; Donald A. Montana, 217 Pine; Thomas O'Connor, 680 Lone Pine Drive.

Ann Arbor residents include: Howard Brown, Judy Heasel, Jon Kowalek, Roland Poska, Martin Prekop, Harvey C. Gordon and John Torrance. Bloomfield Hills exhibitors include: Shari Brush, 1371 Cedar Bend Drive, and Harvey Croze, 380 Lone Pine Drive.

Continuing through June 22, the exhibition will be hosted by the Detroit Arts Commission and the Founders Society. The Women's Committee, Founders Society, will welcome the public at a reception in the Great Hall from 8:30-11 p.m.

Largely abstract, it includes oils, watercolors, pastels, drawings, etchings, linocuts, lithographs, woodblock prints, sculpture and photographs.

BIRMINGHAM residents represented in the show are: Norita Eglet, 614 Purdy; Kathleen Lewis, Hilltop Lane; Rodger Mack, 132 N. Woodward; Alissa Mackie, 2725 Juniper; Donald A. Montana, 217 Pine; Thomas O'Connor, 680 Lone Pine Drive.

Ann Arbor residents include: Howard Brown, Judy Heasel, Jon Kowalek, Roland Poska, Martin Prekop, Harvey C. Gordon and John Torrance. Bloomfield Hills exhibitors include: Shari Brush, 1371 Cedar Bend Drive, and Harvey Croze, 380 Lone Pine Drive.

Continuing through June 22, the exhibition will be hosted by the Detroit Arts Commission and the Founders Society. The Women's Committee, Founders Society, will welcome the public at a reception in the Great Hall from 8:30-11 p.m.

Largely abstract, it includes oils, watercolors, pastels, drawings, etchings, linocuts, lithographs, woodblock prints, sculpture and photographs.

BIRMINGHAM residents represented in the show are: Norita Eglet, 614 Purdy; Kathleen Lewis, Hilltop Lane; Rodger Mack, 132 N. Woodward; Alissa Mackie, 2725 Juniper; Donald A. Montana, 217 Pine; Thomas O'Connor, 680 Lone Pine Drive.

Ann Arbor residents include: Howard Brown, Judy Heasel, Jon Kowalek, Roland Poska, Martin Prekop, Harvey C. Gordon and John Torrance. Bloomfield Hills exhibitors include: Shari Brush, 1371 Cedar Bend Drive, and Harvey Croze, 380 Lone Pine Drive.