

**NOW! LOWEST PRICE EVER!**  
**all aluminum**  
**PATIO**

Any Size Up To  
**Giant 8 ft. by 20 ft. ... Now Only**  
**\$129.00**  
 completely installed!

No Money DOWN  
 EASY TERMS

**ORDER NOW!**  
**SAVE \$\$\$! It's like adding another room to your home!**

A quality, all aluminum beauty that serves as a PATIO COVER, DINING PORCH, PLAY AREA.

Larger Jobs proportionately priced.

**GIANT 8 FT. x 20 FT.**  
 SPRING SPECIAL  
**\$99**  
 NET PATIO CO.  
 Call Now TO 5-9000

Ala. v. Cal.  
 Ala. v. Fla.  
 Ala. v. N.Y.  
 Ala. v. Pa.  
 Ala. v. S.C.  
 Ala. v. Tex.

It's the shape of the future...

but the HEART of MIRACLE MOWING TODAY!

**Jacobsen Turbocone**

This is the Jacobsen Turbocone. It features a cutting frequency double that of ordinary bar-type mowers—cuts smoothly, cleanly, with a vacuum-like lifting action that leaves your lawn swept clean. Blades have hardened cutting edges for long life with a minimum of wear—are reversible for economy and replaceable when necessary.

But the Turbocone is only one of the features of this Jacobsen rotary mower. There's a crankshaft warranty good for a year, a 2-bladed capacity grass catcher, and a husky, powerful engine that just won't give up no matter how rough the going.

Seven different Turbocone models available. Come in and see them soon.

Available at extra cost.

Turbocone "An-Lift" action literally draws up lawn or trampled grasses and weeds—cuts them evenly, cleanly.

One special belt and nut is used to attach each Turbo blade to the disc at a central point so that the blade will turn away or retract from the engaged object.

Close coupling between the engine and Turbocone provides added protection against damage.

ASK ABOUT OUR LAY-AWAY PLAN

As Low As **\$79.95**

EASY TERMS — WE TAKE TRADE-INS

**SPECIAL SALE ... \$100.00 OFF (kd)**  
**NEW 1961 RIDING TRACTORS**  
**4½ - 5¾ - 7 H.P.**

**MANUS POWER MOWERS, INC.**  
 3116 N. Woodward Ave., Royal Oak  
 (2 miles So. of 14 Mile Road)  
 Open 8 to 8 Daily—Sundays 8 to 6 P.M.—Sundays 10 a.m. to 2 p.m.  
 LI 9-2440

## PEOPLE'S COLUMN

# Fluoridation Debate Alive, Gaining Force

To the Editor:

"Don't confuse me with the facts, my mind is made up." An observation connected most likely by a contemporary wit, who was well aware of the foibles of his fellow men.

It is being said in the office supply stores to hang over one's desk.

My intention is not to confuse anyone with facts, whose mind is made up, but would like to make a few diverse conclusions reached by so-called authorities on fluoridation, because the great debate in our communities is much alive and gaining in momentum.

WAY BACK in 1901 a young Pennsylvania dental school graduate, Dr. Fred McKay, who settled in Colorado, observed paper white, yellow, brown or black staining of the teeth on many of his patients as well as a frail chalklike pitted condition, yet majority showing a very noticeable lack of dental caries.

This being a new experience to Dr. McKay, he and a few other interested dentists devoted almost 30 years of research and collection of data to find out the cause for nothing of teeth.

Their research led them to the responsible trace element in water, fluorine, which the ordinary chemical analyses failed to reveal. But with the introduction of spectroscopy and polarography the detection of this mysterious element F became reality.

BEING PRIMARILY interested in the reduction of dental caries in

patients using natural calcium fluorinated water, dentists, tried to reproduce the natural phenomena by adding the manufactured sodium fluoride to drinking water on the premises that it will decrease the dental caries in children.

What they failed to realize was that this villainous agent, fluorine, was very toxic and could not only change the calcium in the tooth structure, but also being cumulative, stored in our body over the years, produce fatal results.

The vital statistics of Grand Rapids reveal that since the fluoridation of water supply in 1945, the death rate increased more than 25 per cent. On the basis of these and other statistics more than 100 cities have abandoned fluoridation after a trial.

THE ONLY reason the dentists find fewer cavities in fluoridated communities is because the drinking of fluorine-poisoned water destroys the bacteria before they, with their acidic waste products can dissolve the tooth enamel.

Eating less carbohydrates and sugar on which mouth bacteria flourish and keeping your mouth antiseptic with harmless mouthwashes will reduce the tooth decay without killing the patient.

The "Fight for Fluoridation" by Donald R. McNeill is a most absorbing and comprehensible book which should be read by all parents and thoughtful citizens interested in the well-being of their family and community.

S. OLSHANSKY, Birmingham

## Raises Questions On This Subject Of Radioactivity

To the Editor:

In the article (on May 10) stating that our city now has a "second radioactivity monitoring station" whose job it is to check, daily, the radioactivity condition of the atmosphere and if any abnormal "situation" arose, they would notify the proper authorities who, in turn, would notify the people, in case a hazard occurred, well.

Has the imagination 'n mind been come down its plastic coated shield of complacency in order that serenity might reign in the midst of a new atomic age we've been pushed into? because:

THIS MIND 'n imagination fails to offer any answers when I ask, "O.K., what would you follow us to help us in case authorities notified everyone that a definite hazard existed via our atmosphere due to radioactivity?"

The mind and imagination never answers. They must be rusty from being chafed in calmness.

Six years ago they weren't as such; they pushed their owner into all sorts of "embarrassing spots."

TO EDITORS, bishops, ministers, doctors, teachers they urged action on this identical supposition that someday our air could be in trouble unless we watched carefully what

we all did.

Everyone contacted was most attentive; they were kind, too. They had no "answer" at that time. We really don't now either, do we?

Thank you,  
 MRS. R. E. VOGT

## Film Available To Local Groups

To the Editor:

Many thanks for the fine publicity in The Birmingham Eccentric which assured the success of our April Crusade theater party at the Birmingham Theater May 3.

We would also like to publicly thank the theatre management for the wonderful cooperation without which we could never have reached the 475 women who attended to see our latest life-saving film, "A Breath of Fresh Air."

THIS FILM, and many others, may be loaned to get educational material, or sickle-cell anemia, or piles for cancer patients, is to call our South Oakland County office, Lincoln 2-1986, or stop in at 1739 Coolidge Highway, Berkeley.

MRS. L. W. NEWBERN  
 Birmingham Theater  
 Chairman  
 Michigan Cancer Foundation

**2 ADULTS, 4 CHILDREN AND A BIG, BIG DOG**

**This family never runs out of hot water!** Washing dogs, diapers or dishes... cleaning walls or windows... there's always plenty of hot water in this house. How come? We figured out just how water in this house. They then installed an American-Standard water heater that's performance-rated to supply all they need, even on busy washdays.

Call for a free survey of your hot water needs. No obligation.

• Gas and electric models • Standard and De Luxe models • Glassed or galvanized • Fiberglass insulation

**AMERICAN-Standard**

**G. C. JOHNSTON**  
 Service — Repair  
**Plumbing and Heating**

Phone Midwest 4-5540 Birmingham—1691 Big Beaver Rd

May 24, 1962

THE BIRMINGHAM (MICH.) ECCENTRIC 5-B

## Happenings

(Continued from 1-B)

conducted by Village Engineer Harold H. Carson, although the regular system will not be needed for regular use until the River Rouge becomes considerably lower.

The fact that apparatus from the Birmingham fire department is not allowed to leave the village limits from the corporation line saves property owners in the village thousands of dollars yearly in fire insurance.

Deductions made by the Board of Review in assessments on village property may result in a slightly lower tax rate than that of \$12 foreseen by the Village Commission before the board began its hearings last week it was announced by Albert W. Noonan.

Noonan pointed out, the amount of taxes actually paid by residents of the village this year will be lower than those of last year. The tax rate in both 1951 and 1950 was \$13.50.

15 YEARS AGO  
 May 22, 1947

If history repeats itself, real estate prices will eventually stabilize themselves at almost 30 percent below today's prices. Clyde C. Bennett, local realtor, told his fellow Realtors recently.

"It's the belief among realtors today that real estate prices have reached their peak and are on the downward trend," Bennett explained. "However, an analysis of real estate trends in the past 100 years indicates that there will be another and much higher peak in prices which may come within five years from now."

"However, after the second peak

is reached, prices will slide to a point about 30 per cent below what they are today, if we can rely on history," he stated.

Just how the City of Birmingham is going to finance its share of such improvements as new sewers, curbs and gutters and new pavements as well as advance 50 per cent of the property owners' share, was the subject of considerable discussion by city commissioners at their recent meeting.

City Manager Donald C. Egbert proposed that the city contemplate the issuance of general obligation bonds to be retired over a period of 20 years to permit the present rate of improvements to continue.

As the city approaches the limit of the first bond issue, Egbert said the city possibly could plan a second issue to handle subsequent assessment projects.

To provide recreational facilities for the former Grant Street Park, an anonymous member of the congregation of St. James Episcopal Church has made a gift of \$4,000 to the city of Birmingham with the stipulation that the amount be matched by the city for the improvement of the park.

The park will henceforth bear the name of St. James Park in honor of the church which has such a civic-minded parishioner.

**WEDDING**  
**Invitations**

ASK FOR  
**Forever Yours**  
 NATIONAL

INVITATIONS  
 ANNOUNCEMENTS  
 ACCESSORIES

You may select your needs with confidence as to quality and correctness of form.

COMPLETE SELECTION  
 PROMPT DELIVERIES

**Birmingham Printing & Office Supply**  
 369 E. Maple MI 4-4751

**Steelcote Damp-Tex**  
**Swimming Pool Paint**

Steelcote Damp-Tex gives a beautiful, satiny, non-porous, elastic, non-glare finish. It deters algae and marine growth, and the extra coverage per gallon makes it a most economical swimming pool protective coating.

**MOSTEK PAINT & GLASS COMPANY**  
 11515 Joseph Campau  
 Detroit 12, Michigan  
 Charge Accounts Invited

TO 4-8378  
 We Deliver

## CONVERT YOUR REGULAR BED TO CONTOUR



The above illustration shows the new fully automatic Select-A-Rest unit by Dura, on a Regular 54-inch double bed, which gives you instant choice of 101 contour positions by push-button control.

The Select-A-Rest unit is available in various widths, i.e., twin bed—30", three-quarter bed—48", double bed—54". King size beds—60". Extra long (96") are available in all sizes.

In just a minute you can convert your twin or Hollywood bed into a relaxing contour bed without changing the decor of your bedroom. And if you have been having trouble relaxing, a new Select-A-Rest contour unit may be just the answer to relieve muscle fatigue and tension.

Ask your doctor about the benefits derived from proper positioning while relaxing. Many units have been sold to people suffering from heart disease, asthma, varicose veins, respiratory problems and orthopedic ailments.

The fully automatic hydraulic Select-A-Rest unit is easily adaptable to any existing bed as well as all types of adjustable frames.

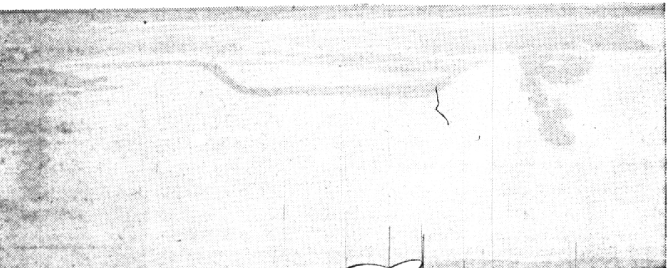
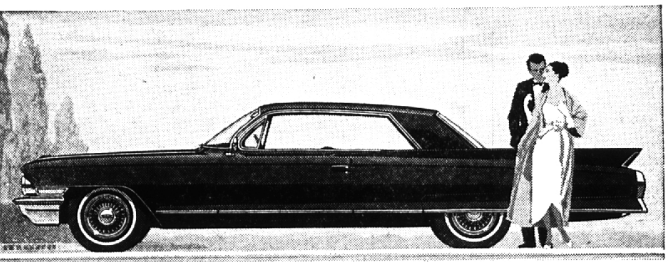
Simply remove the mattress and box spring, place the Select-A-Rest unit where the box spring was, place the mattress back on top and the conversion is complete.

After assembly, plug the unit into any standard 110 to 125 volt AC outlet for immediate use.

The unit operates as smoothly as a convertible top. No wonder it was developed by Dura Corporation, of Oak Park, Michigan, the exclusive supplier of hydraulically operated convertible tops to the automotive industry.

Remember a Select-A-Rest unit needs no extra space, does not change the height of your bed or change the decor of your bedroom. For further information write or phone THERAPEUTIC SLEEP PRODUCTS, 16400 Woodward, Highland Park 3, Mich. 865-2213.

In the way it looks, rides and handles,  
 Cadillac has brought a new level of elegance to modern motoring.



Visit Your Local Authorized **Cadillac** Dealer

**WILSON PONTIAC-CADILLAC, INC.**  
 1350 NORTH WOODWARD AVENUE  
 BIRMINGHAM, MICH.